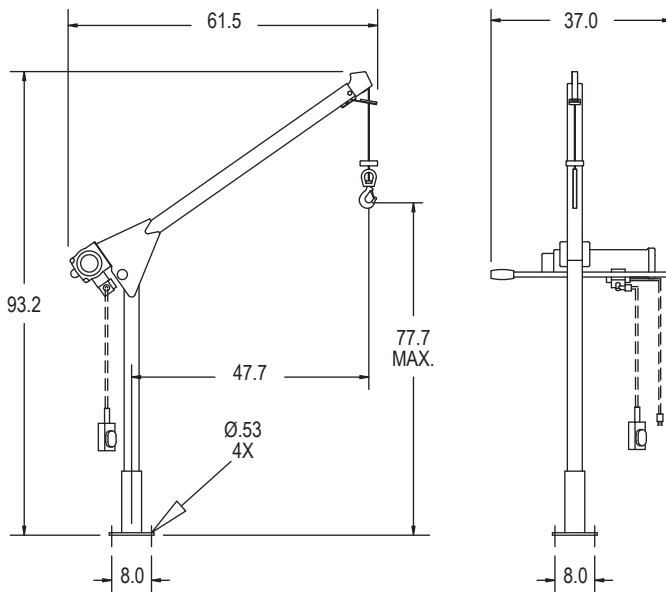


CAUTION: The final determination as to the suitability of this product for any purpose is solely that of the user. Columbia products are not to be used to lift people or to lift anything over people.



Safer and Simpler Material Handling.

Davit Specifications

- Fabricated steel construction
- Integral swing handle
- Headache ball
- Paddle type upper limit switch
- Easy assembly
- Mounting base

Hoist Specifications

- Columbia HD650 AC electric wire rope hoist
- 400 lbs full drum line pull at 31 fpm
- 115/230VAC 1Ø TEFC brakemotor
- Permanently lubed, 3-stage planetary geartrain
- Automatic, load suspending braking system
- Storage up to 99' of 3/16" wire rope
- 15' long NEMA 12 UL listed remote control

Allied Power Products, Inc. davit cranes can be provided for virtually any material handling application. Please contact us with your requirements.

Distributed by:



1040 RUE ROBERT, ST-JÉRÔME, QC, J5L 2G9
TÉL : (450) 565-6141 / MTL : (450) 476-6065
FAX : (450) 565-3432 / EMAIL : info@reptech.ca
SITE WEB : www.reptech.ca