



EF2 SINGLE PHASE ELECTRIC CHAIN HOIST

PARTS LIST

IMPORTANT

When ordering replacement parts, please specify the following points:

1. Hoist capacity, voltage and cycle.
2. Model number in name plate.
3. Correct part names and numbers.
4. Lineal length of push button cord, chain lift or power supply cable.

A HOUSING AND MOTOR PARTS

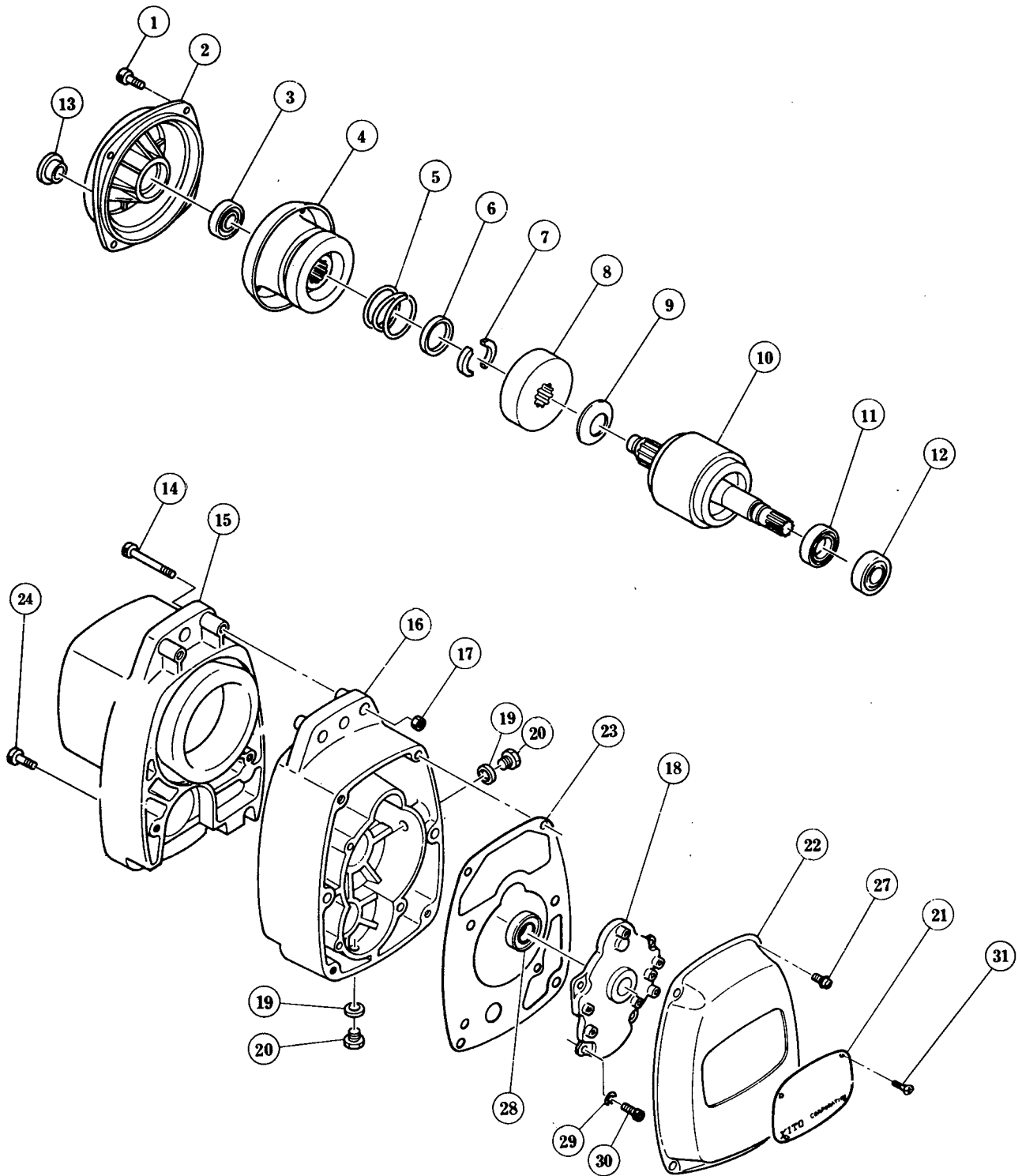
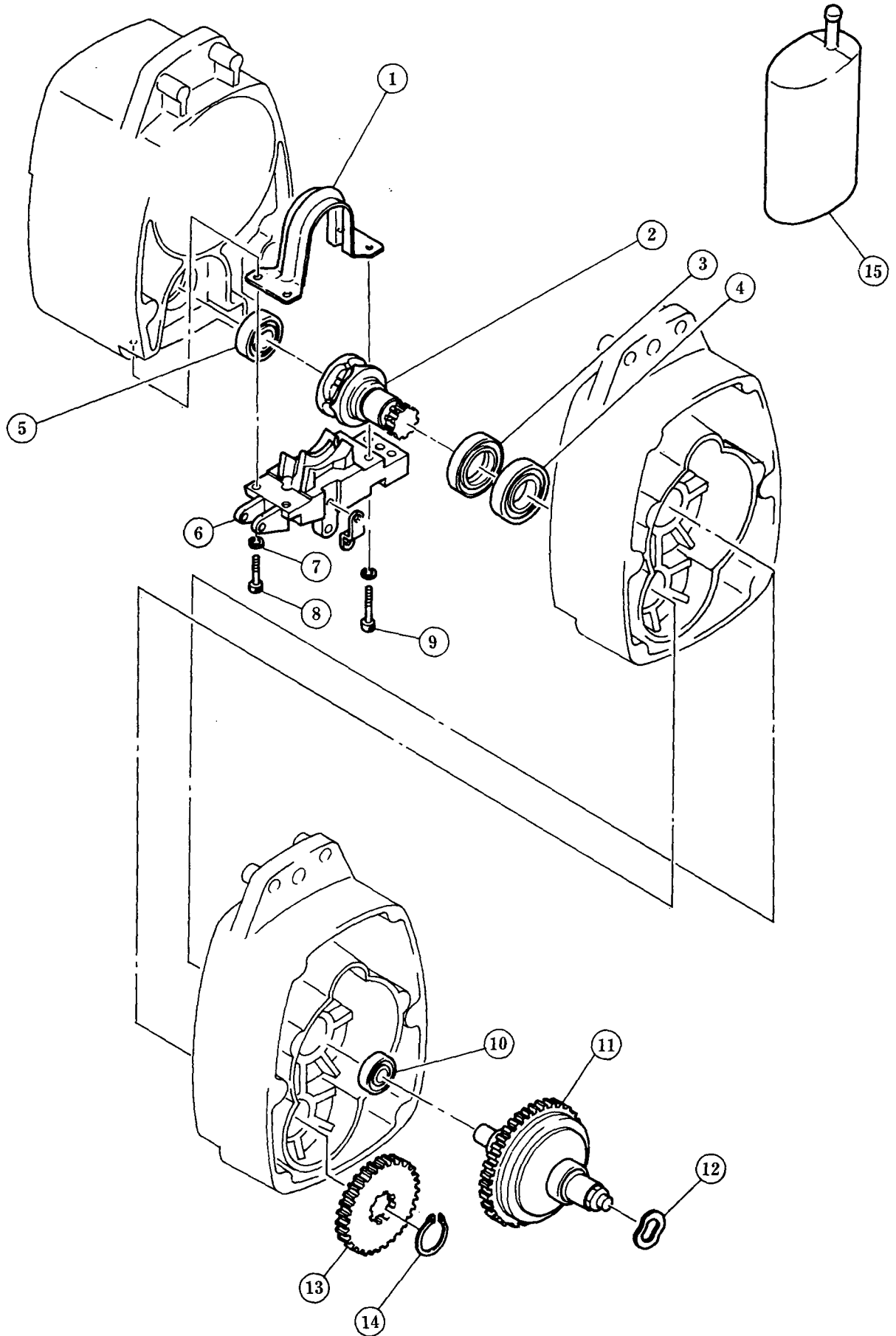


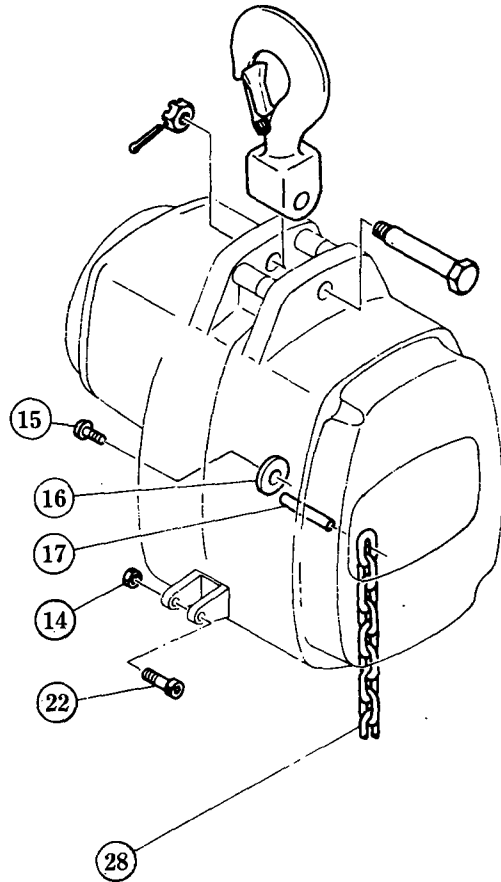
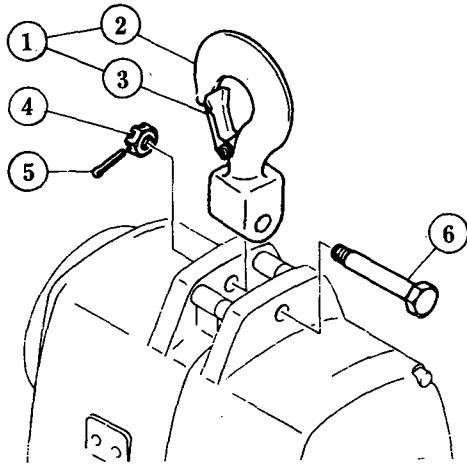
Fig No.	Part No.	Part Name	Parts Per Hoist	Capacity					
				¼-S	½-L	½-S	1-L	1-S	2-L
1	E6F 162	Socket bolt	4	M 6 × 18 × 18		M 8 × 20 × 20			
2	E6F6107	Motor cover assembly	1						
* 3	E6F 202	Ball bearing	1	6202		6203			
4	E6FS5212	Brake drum assembly	1						
5	E6FS 214	Brake spring	1						
6	E6FS 506	Thrust collar	1						
7	E6FS 505	Thrust disc	2						
8	E6FS 503	Pull-rotor	1						
9	E6FS 504	Coned-disc spring	1						
10	E6FS5502	Motor shaft with rotor	1						
11	E6FS 221	Oil seal	1						
12	E6F 222	Ball bearing	1	6003		6004			
13	E6F 120	Plug	1						
14	E6F 160	Socket bolt	2	M 6 × 60 × 18		M 8 × 75 × 22			
15	E6FS5102	Body M with stator	1						
16	E6F 101	Body G	1						
17	E6F 158	Nut	2	M 6		M 8			
18	E6F 113	Gear cover	1						
19	E6F 108	Plug packing	2						
20	E6F 111	Oil plug	2						
21	E6FS 800	Name plate B	1						
22	E6FS 104	Controller cover	1						
23	E6F 107	Controller cover packing	1						
24	E6F 161	Socket bolt	2	—		M 8 × 45 × 22			
			4	M 6 × 40 × 18		—			
27	E6F 151	Machine screw with spring washer	4	M 6 × 12		—			
			6	—		M 6 × 12			
28	E6FS 235	Oil seal	1						
29	E6F 155	Spring washer	4	M 6					
30	E6F 156	Socket bolt	4	M 6 × 18 × 18		M 6 × 25 × 25			
31	E6FS 861	Rivet (CSA use only)	4	3 × 5				3 × 4	

* 3 When replacing Ball Bearing, put "Bearing Mount No.85" LOCTITE CORP. or other equivalent chemical glue.

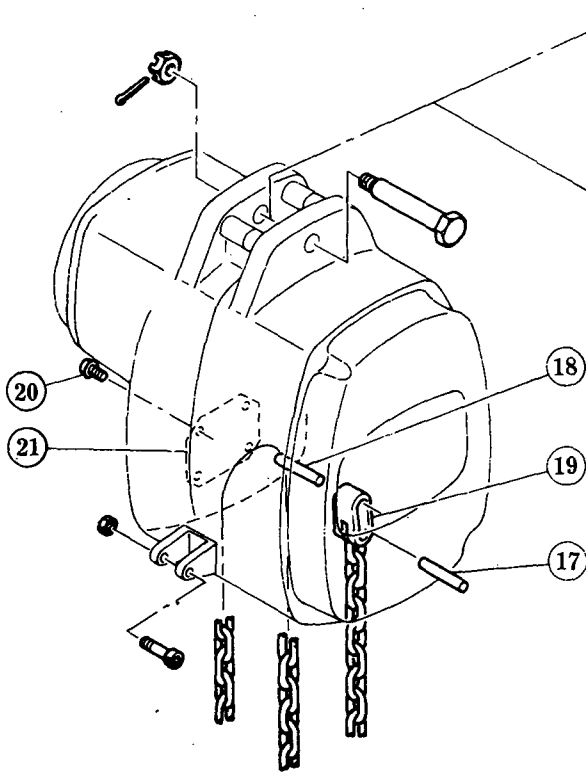
B GEARING PARTS



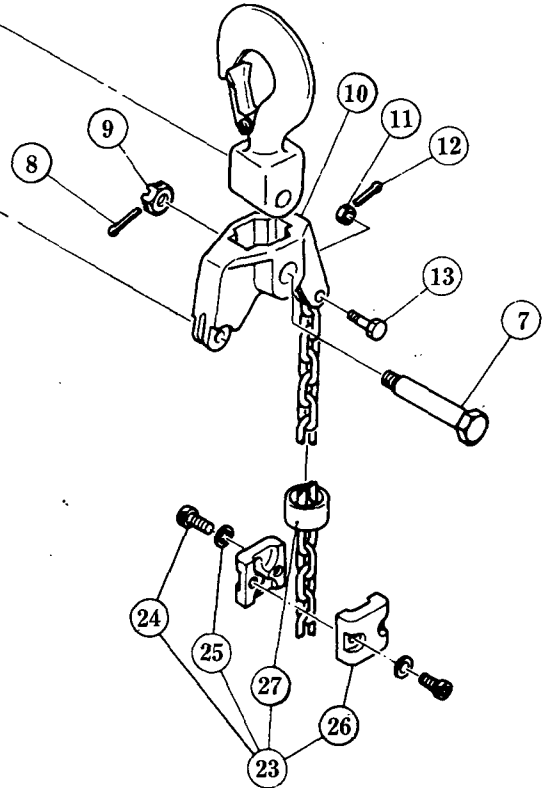
C CHAINING AND TOP HOOK PARTS



1/4tS&1/2tL



1/2tS, 1tL&S



2tL

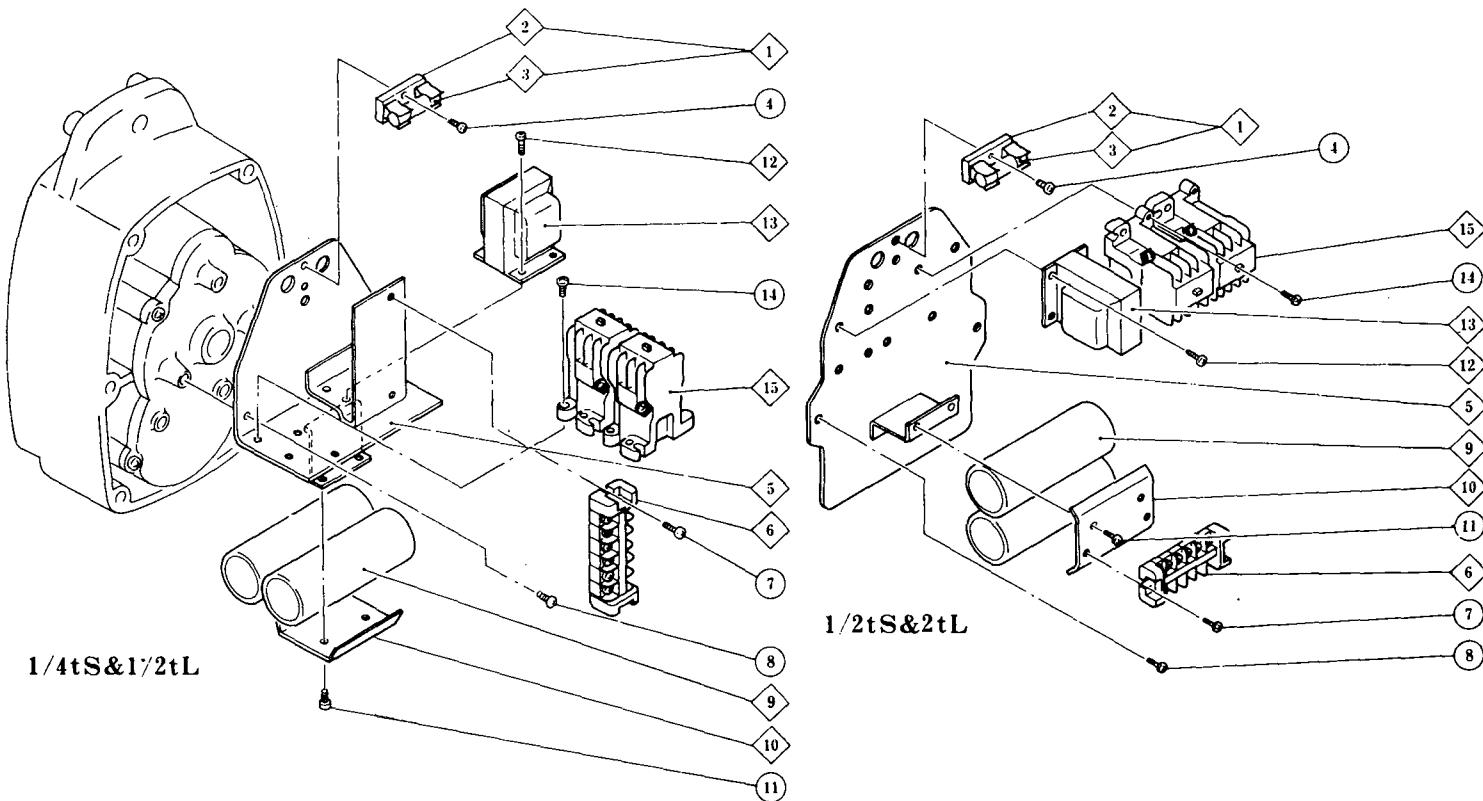
Fig No.	Part No.	Part Name	Parts Per Hoist	Capacity						
				¼-S	½-L	½-S	1-L	1-S	2-L	
1	E6F1001	Top hook assembly	1							
2	E6F 001	Top hook	1		—		—		—	
3	E6F 1071	Hook latch assembly	1							
4	E6F 166	Slotted nut	1	M10						
5	E6F 167	Split pin	1	2.5×18						
6	E6F 117	Top pin	1							
7	ES 006	Top pin L	1			—				
8	E6F 089	Split pin	1			—				4×30
9	E6F 088	Slotted nut	1			—				M16
10	E6F 005	Connection yoke	1			—				
11	E6F 049	Slotted nut	1			—				
12	E6F 096	Split pin	1			—				2×15
13	E6F 041	Chain pin	1			—				
14	ES 855	U-nut	2							
15	E6F 164	Machine screw with spring washer	1	M 5×10				—		
16	E6F 127	Stopper plate	1					—		
17	E6F 124	Chain pin A	1						—	
18	E6F 125	Chain pin B	1		—				—	
19	E6F 126	Suspension plate	1		—				—	
20	E6F 163	Machine screw with spring washer	4		—		M 6×12			M 6×12 *
21	E6F 123	Cover	1		—					*
22	E6F 154	Socket bolt	2	M 6×45×8						
23	E6F1036	Stopper L assembly	1				—			
24	E6F 086	Socket bolt	2				—			M 6×20×18
25	E6F 155	Spring washer	2				—			M 6
26	E6F 036	Stopper L	2				—			
27	E6F 037	Stopper cover	1				—			
28	E6F 841	Load chain	1							

* CSA type use only

Fig No.	Part No.	Part Name	Parts Per Hoist	Capacity					
				¼-S	½-L	½-S	1-L	1-S	2-L
1	E6F5830	Chain container L	1						
	E6F5831	Chain container S							
2	E6F1045	Stopper assembly	1						
3	E6F 086	Socket bolt	2	M 5 × 18		M 6 × 18			
4	E6F 087	Spring washer	2	M 5		M 6			
5	E6F 045	Stopper	2						
6	E6F 046	Cushion rubber S	1	—		—		—	
			2		—		—		—
7	E6F1021	Bottom hook complete set	1						
8	E6F 032	Bottom yoke assembly	1						
9		Bottom yoke	2						
10		High strength bolt	2	M 6 × 25 × 18			M 8 × 30 × 22		
11		Nut	2	M 6			M 8		
12		Spring washer	2	M 6			M 8		
13	E6F 027	Hook stopper	2						
14	E6F 022	Thrust bearing	1	51103			51104		51105
15	E6F2021	Bottom hook assembly	1						
16	E6F1071	Hook latch assembly	1						
17	E6F 021	Bottom hook	1	—	—	—	—	—	—
18	F6F 047	Cushion rubber L	1	—		—		—	—
19	E6F1051	Idle sheave assembly	1	—		—		—	
20	E6F1064	Bottom shaft assembly	1	—		—		—	
21	E6F 064	Bottom shaft	1	—		—		—	
22	E6F 055	Spring pin	1	—	4 × 8	—	4 × 8	—	5 × 10
23	ES 026	Thrust collar A	1						

ELECTRIC PARTS

(When ordering, specify voltage, cycles for your hoist)



Direct Voltage Control Type

Fig No.	Part No.	Part Name	Parts Per Hoist	Capacity						
				1/4-S	1/2-L	1/2-S	1-L	1-S	2-L	
1	E6FS1632*	Fuse assembly	1							
2	E6FS 633*	Fuse holder	1							
3	E6FS 632*	Fuse	1							
4	E6F 664 *	Machine screw with spring washer	2				M 4 × 16			
5	E6FS5601	Panel assembly	1							
6	E6F 602	Terminal plate 6P	1							
7	E6F 652	Machine screw with spring washer	2				M 4 × 16			
8	E6F 651	Machine screw with spring washer	3				M 6 × 12			
9	E6FS1631	Condenser assembly	1							
10	E6FS 636	Condenser holder	1							
11	E6F 652	Machine screw with spring washer	2				M 4 × 16			

*marked parts are not used on CSA type.

Low Voltage Control Type (Additional Parts to Direct Voltage Control Type Parts)

Fig No.	Part No.	Part Name	Parts Per Hoist	Capacity						
				1/4-S	1/2-L	1/2-S	1-L	1-S	2-L	
12	E6FS 663	Machine screw with spring washer	4				M 4 × 8			
13	E6FS 616	Transformer	1							
14	E6F 662	Machine screw with spring washer	4				M 4 × 16			
15	E6F 617	Electromagnetic contactor	2							

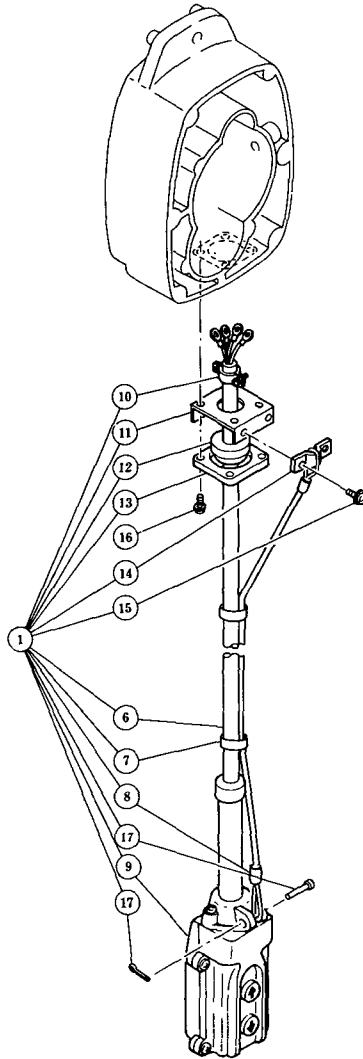


Fig No.	Part No.	Part Name	Parts Per Hoist	Capacity					
				¼-S	½-L	½-S	1-L	1-S	2-L
1	E6FS1607L	2 Push buttons cord complete set	1						
10	E6F1612	Cable clamp 14 assembly	2						
11	E6F 613	Holder plate U	1						
12	E6F 611	Packing 12	1						
13	E6F 605	Cable holder 42	1						
14	E6F 614	Cord stopper	1						
15	E6F 660	Machine screw with spring washer	2			M 6 × 10			
6	E6FS 607L	Push button cord 3C	1						
8	E6F 638	Fixing sleeve	2						
7	E6F 617	Lock belt	2						
17	E6F 638	Cord chain pin with split pin	1						
9	E6FS1615L	2 Push buttons switch assembly	1						
16	E6F 551	Machine screw with spring washer	4			M 5 × 25			

(CSA TYPE)

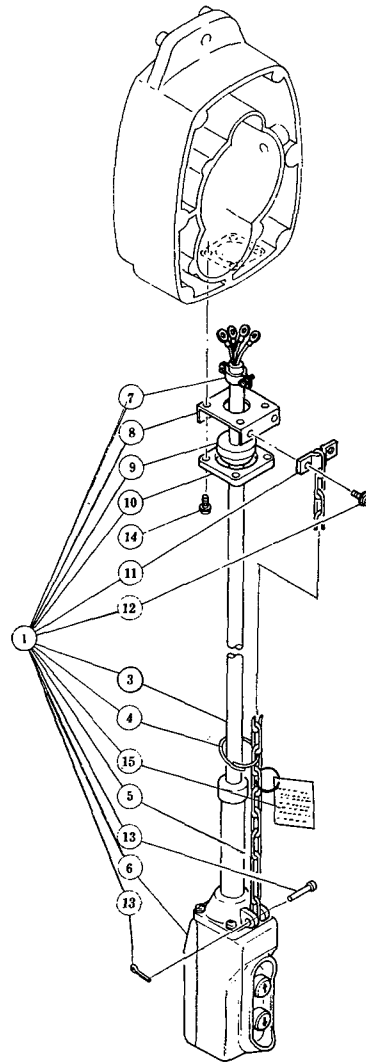


Fig No.	Part No.	Part Name	Parts Per Hoist	Capacity					
				¼-S	½-L	½-S	1-L	1-S	2-L
1	E6FS1607D	2 Push button cord complete set	1						
3	E6FS 607D	Push button cord 4C	1						
4	E6F 629	Cord ring	5						
5	E6F 627	Cord chain	1						
6	E6FS1615D	2 Push button switch assembly	1						
7	E6F 612	Cable clamp 18 assembly	1						
8	E6F 613	Holder plate U	1						
9	E6F 611	Packing 18	1						
10	E6F 522	Cable holder 42	1						
11	E6F 614	Cord chain stopper	1						
12	E6F 660	Machine screw with spring washer	2				M 6 × 10		
13	E6F 541	Cord chain pin with split pin	1						
15	E6FS815	Tag S with ring	1						
14	E6F 551	Machine screw with spring washer	4				M 5 × 25		

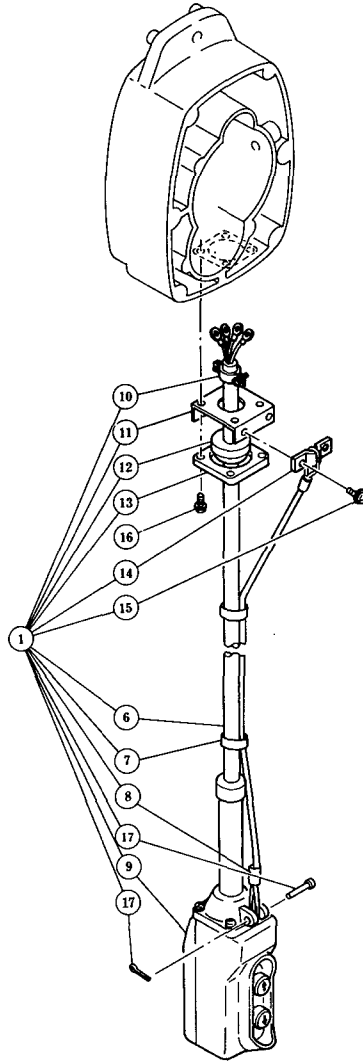
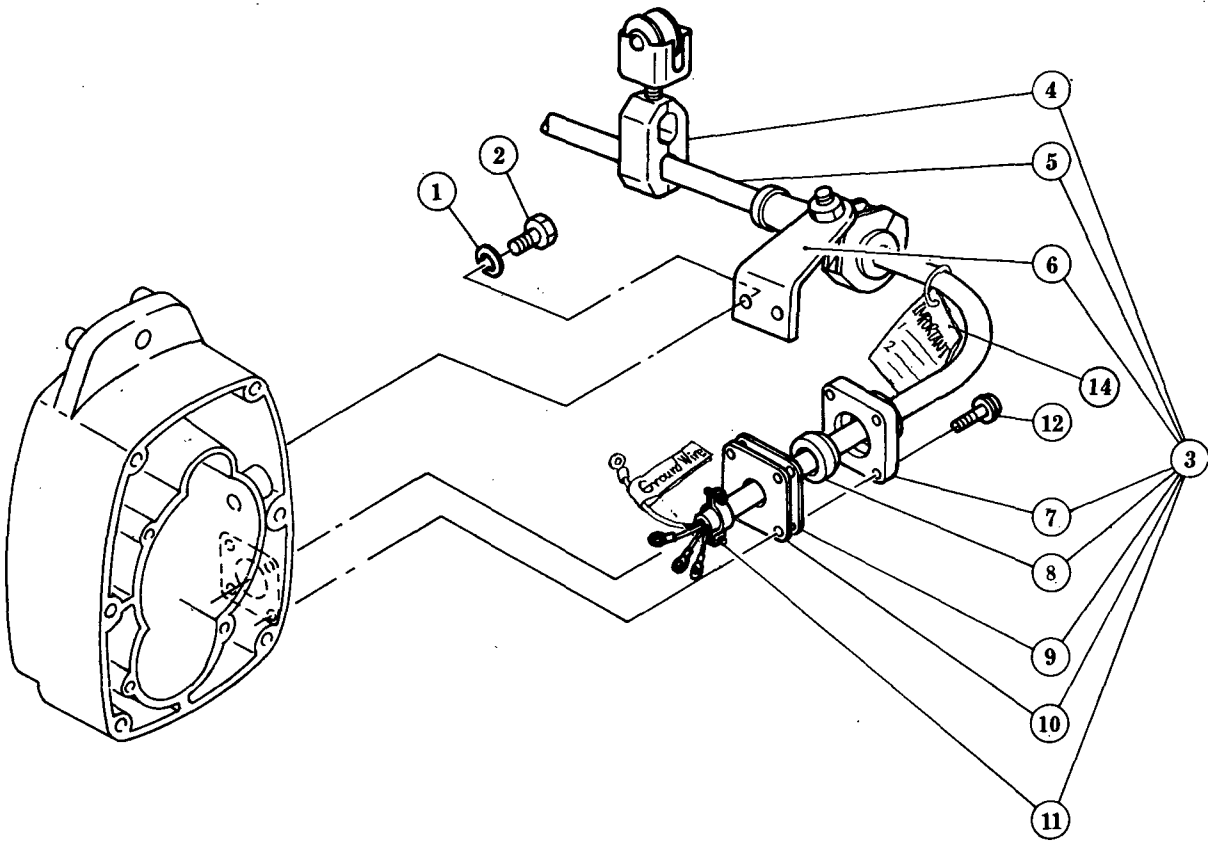


Fig No.	Part No.	Part Name	Parts Per Hoist	Capacity						
				¼-S	½-L	½-S	1-L	1-S	2-L	
1	E6F1607	2 Push buttons cord complete set	1							
	10	E6F1612	Cable clamp 14 assembly	2						
	11	E6F 613	Holder plate U	1						
	12	E6F 611	Packing 14	1						
	13	E6F 605	Cable holder 42	1						
	14	E6F 614	Cord chain stopper	1						
	15	E6F 660	Machine screw with spring washer	2						M 6 × 10
	6	E6F 607	Push button cord 4 C	1						
	8	E6F 638	Fixing sleeve	2						
	7	E6F 617	Lock belt	2						
	17	E6F 541	Cord chain pin with split pin	1						
	9	E6F1615	2 Push buttons switch assembly	1						
16	E6F 551	Machine screw with spring washer	4							M 5 × 25

* When ordering, specify voltage, cycles for your hoist.

G POWER SUPPLY PARTS





Tsujiarai 2000, Showa-cho,
Nakakoma-gun,
Yamanashi 409-3853, Japan
Phone : 0552-75-7736
Fax. : 0552-75-6165