



# ER SERIES ELECTRIC CHAIN HOIST

## MODEL ER1 7.5 TO 20t

# PARTS LIST

## Approved by CSA

### IMPORTANT

When ordering replacement parts, please specify the following points :

1. Voltage
2. Hoist capacity.
3. Model number in name plate
4. Correct part names and numbers
5. Lineal length of push button cord or power supply cable

## CONTENTS

### **PARTS COMMON TO PLATE SUSPENSION AND HOOK SUSPENSION TYPES**

A. HOUSING AND MOTOR PARTS .....	1
B. GEARING PARTS .....	3
C. CHAINING PARTS .....	5
D. BOTTOM HOOK PARTS .....	7
E. ELECTRIC PARTS .....	11
F. PUSH BUTTON CONTROL STATION PARTS .....	13
G. CHAIN CONTAINER PARTS .....	15

### **PARTS FOR PLATE SUSPENSION TYPE**

H. CONTROL STATION AND CABLE PARTS .....	19
I. TOP SUSPENSION PLATE PARTS .....	21

### **PARTS FOR HOOK TYPE**

J. CONTROL STATION AND CABLE PARTS .....	25
K. TOP HOOK PARTS .....	27

# PARTS COMMON TO PLATE SUSPENSION AND HOOK SUSPENSION TYPES

## A HOUSING AND MOTOR PARTS

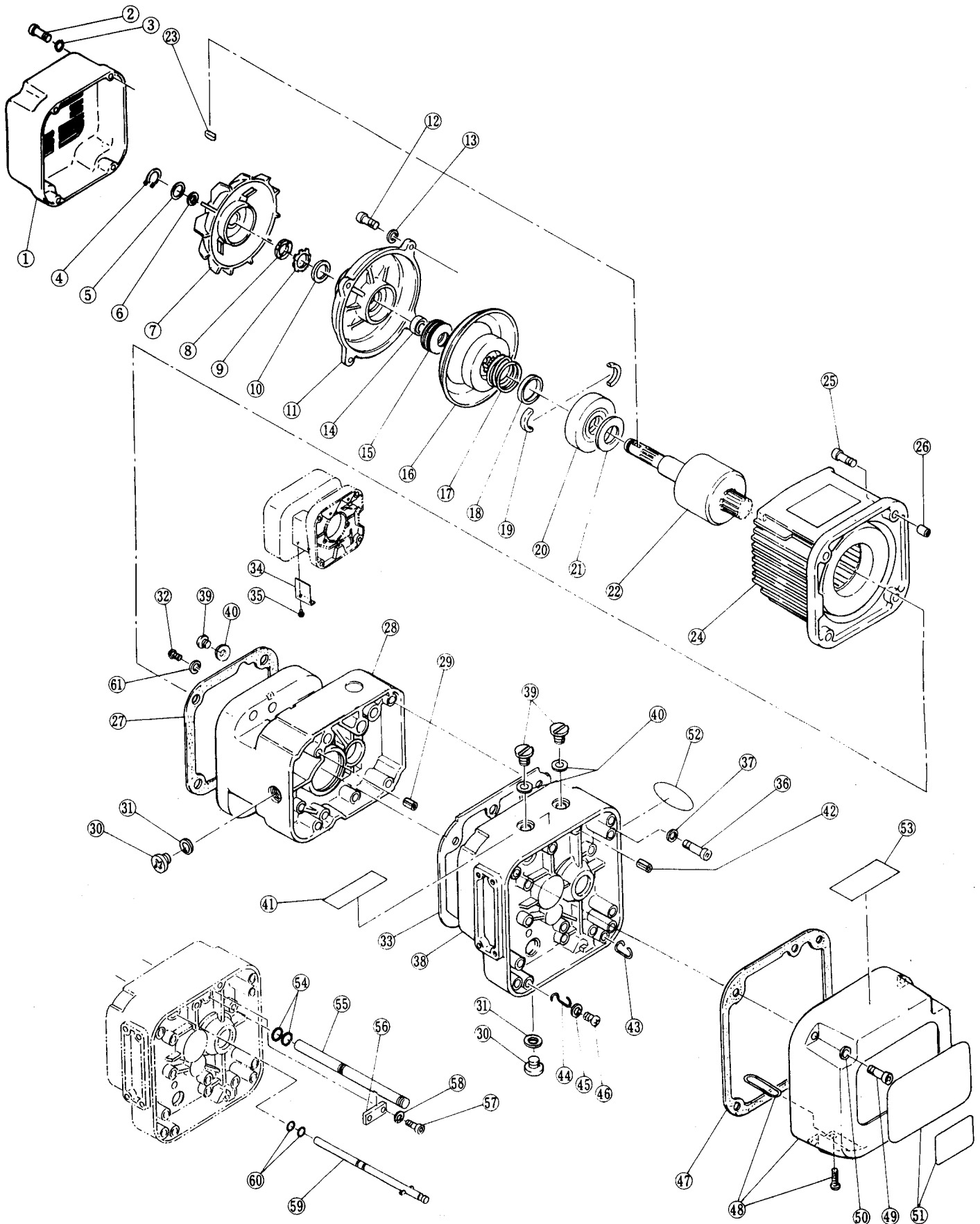


Fig No.	Part No.	Part name	Single speed									
			No. per Hoist					Capacity				
			7.5t	10t(L)	10t(S)	15t	20t	7.5t	10t(L)	10t(S)	15t	20t
Housing and motor parts												
1	107	Fan cover	1			2						
2	160	Socket bolt	4			8						
3	161	Toothed lock washer	4			8						
4	323	Snap ring	1			2						
5	322	Fan washer	1			2						
6	321	O ring	1			2						
7	108	Fan	1			2						
8	314	Nut	1			2						
9	315	Lock washer	1			2						
10	313	Spacer	1			2						
11	2106	Motor cover assembly	1			2						
12	158	Socket bolt	4			8						
13	159	Spring lock washer	4			8						
14	312	Collar M	1			2						
15	311	Coned disk spring M	4			8						
16	5212	Brake drum assembly	1			2						
17	214	Brake spring	1			2						
18	318	Collar	1			2						
19	317	Thrust disc	2			4						
20	503	Pull rotor	1			2						
21	316	Coned disk spring	1			2						
22	5502	Motor shaft with rotor	1			2						
23	320	Key	1			2						
24	5501	Motor frame with stator	1			2						
25	155	Socket bolt	4			8						
26	138	Set pin S	2			4						
27	118	Packing M	1			2						
28	100	Body A	1			2						
29	137	Set pin S	2			4						
30	133	Oil plug	2			4						
31	136	Plug packing	2			4						
32	128	Pan head machine screw	1			2						
33	116	Packing G	1			2						
34	055	Body protector	1			2						
35	056	Socket bolt	2			4						
36	151	Socket bolt	5			10						
37	152	Toothed lock washer	5			10						
38	103	Gera case F	1			2						
39	135	Oil plug B	3			6						
40	173	Eyebolt packing	3			6						
41	810	Name plate OF	1			2						
42	139	Spring Pin	1			2						
43	431	Cover suspender A	1			2						
44	432	Cover suspender B	1			2						
45	436	Washer	2			4						
46	435	Machine screw with spring washer	2			4						
47	117	Packing C	1			2						
48	1104	Controller cover assembly	1			2						
49	153	Socket bolt	4			8						
50	154	Toothed lock washer	4			8						
51	800	Name plate B	1			2						
	802	Name plate D	1			2						
52	868	Name plate AD	1			2						
53	935	Warning label EE	1			2						
54	126	O ring	2			4						
55	121	Connection shaft	1			2						
56	123	Plate A	1			2						
57	141	Socket bolt	2			4						
58	142	Toothed lock washer	2			4						
59	1121	Fixing shaft assembly	1			2						
60	127	O ring	2			4						
61	131	Toothed lock washer	1			2						

# B GEARING PARTS

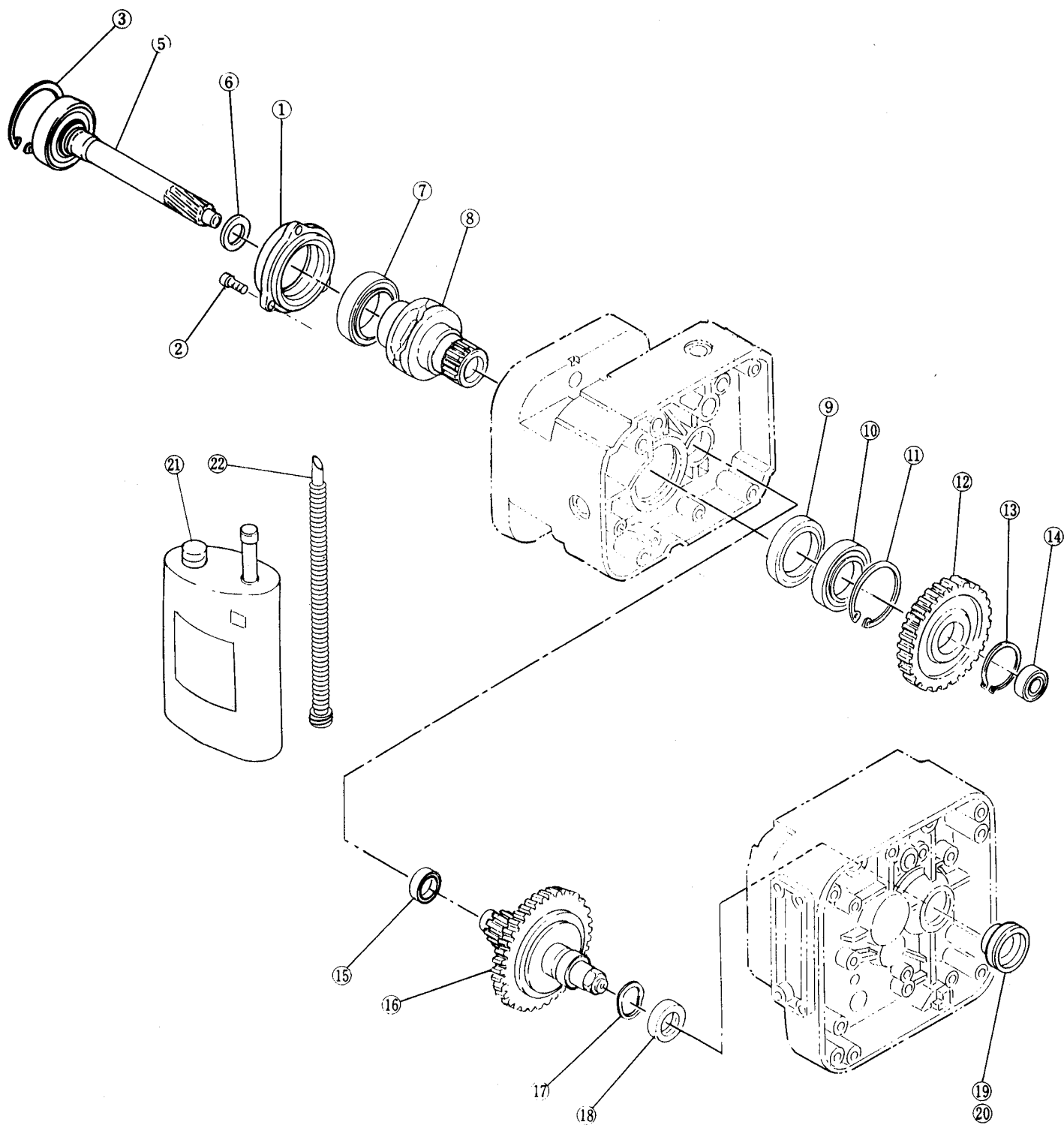


Fig No.	Part No.	Part name	Single speed									
			No. per Hoist					Capacity				
			7.5t	10t(L)	10t(S)	15t	20t	7.5t	10t(L)	10t(S)	15t	20t

Gearing parts

1	110	Bearing holder	1			2							
2	164	Socket bolt	3			6							
3	166	Snap ring	1			2							
5	5220	Pinion assembly	1			2							
6	221	Oil seal	1			2							
7	242	Ball bearing	1			2							
8	241	Load sheave	1			2							
9	244	Oil seal	1			2							
10	243	Ball bearing	1			2							
11	207	Snap ring	1			2							
12	240	Load gear	1			2							
13	245	Snap ring	1			2							
14	222	Ball bearing	1			2							
15	238	Ball bearing	1			2							
22	903	Pot nozzle	1			2							
16	1223	Friction clutch complete set	1			2							
17	234	Wavy washer	1			2							
18	233	Oil seal	1			2							
19	235	Friction plug	1			2							
20	840	Name plate FP	1			2							
21	1901	Gear oil F	3			6							

# C CHAINING PARTS

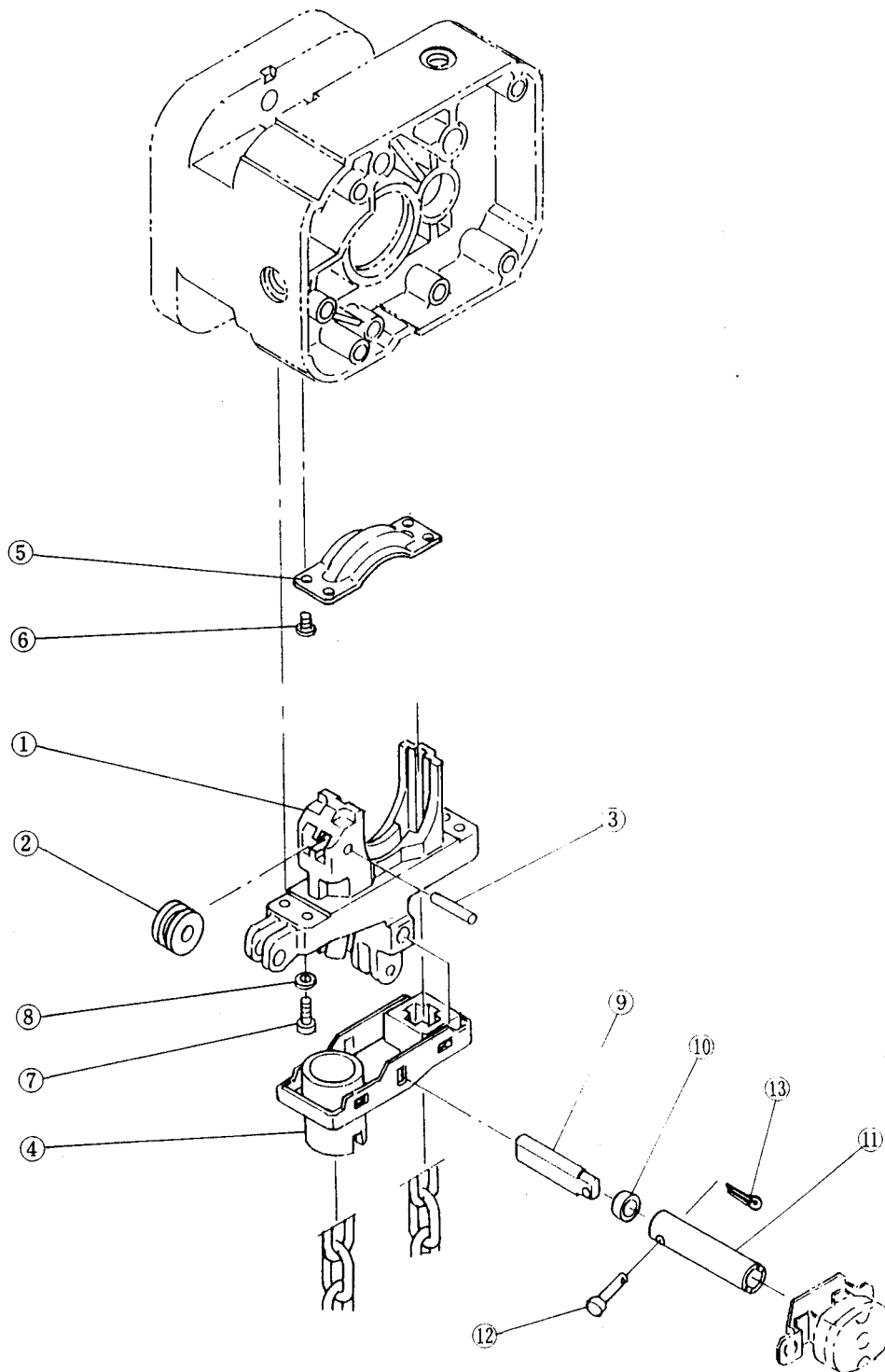


Fig No.	Part No.	Part name	Single speed									
			No. per Hoist					Capacity				
			7.5t	10t(L)	10t(S)	15t	20t	7.5t	10t(L)	10t(S)	15t	20t

Chaining parts

Upper/Lower limit switch

1	331	Chain guide A	1				2						
2	333	Guide roller	1				2						
3	334	Roller pin	1				2						
4	5335	Limit lever assembly	1				2						
5	332	Chain guide B	1				2						
6	348	Machine screw with spring washer	4				8						
7	346	Socket bolt	4				8						
8	347	Spring lock washer	4				8						
9	338	Limit lever pin	1				2						
10	340	Limit lever collar	1				2						
11	339	Limit lever coupling	1				2						
12	341	Coupling pin	1				2						
13	342	Split pin	1				2						



# D BOTTOM HOOK PARTS

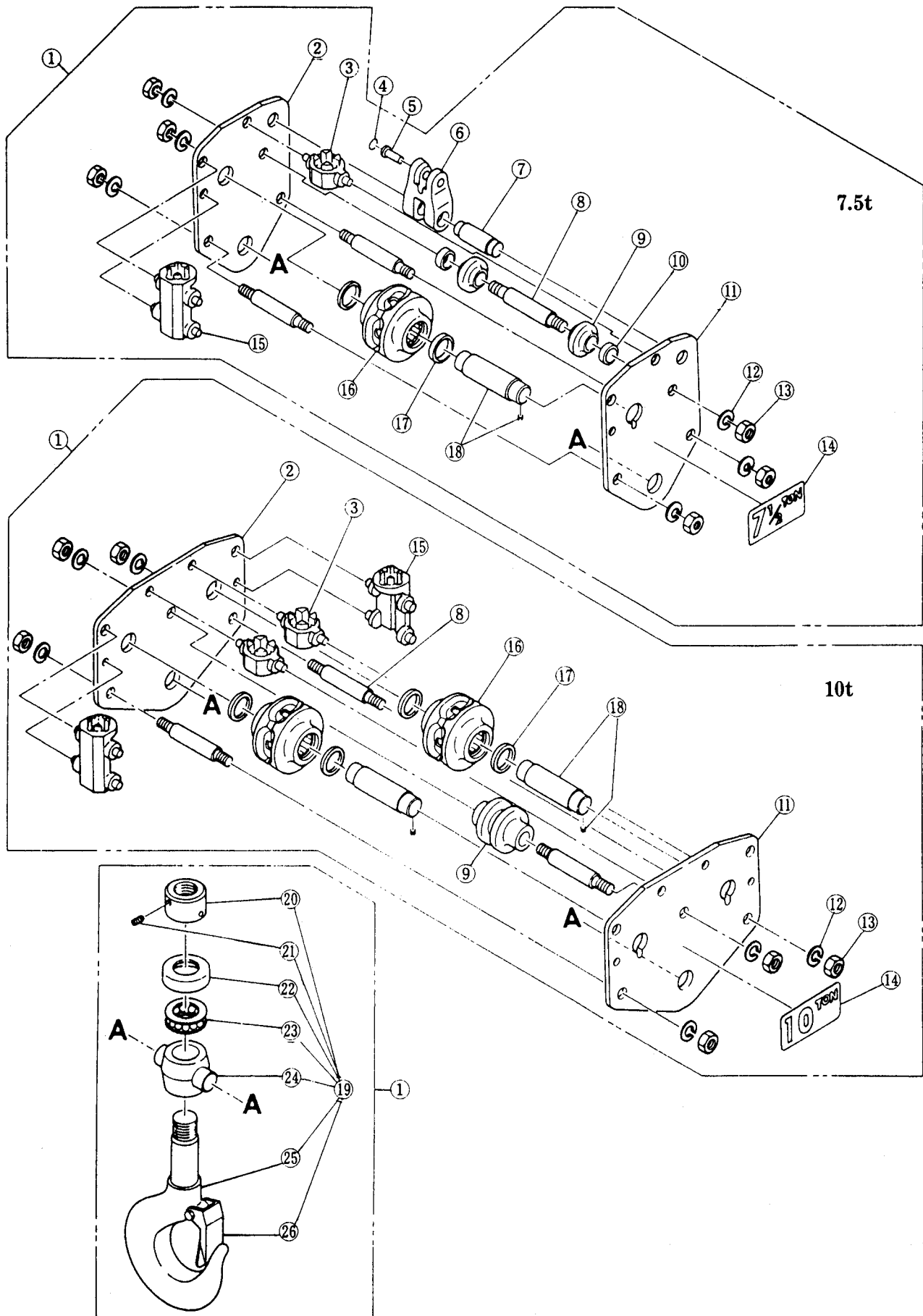


Fig No.	Part No.	Part name	Single speed			
			No. per Hoist		7.5t	10t
			7.5t	10t		

Bottom hook parts

7.5t, 10t

1	1021	Bottom hook complete set	1			
2	035	Bottom suspension plate B	1			
3	067	Bottom cross guide	1	2		
4	092	Snap ring	1	_____		_____
5	041	Chain pin	1	_____		_____
6	039	Chain holder	1	_____		_____
7	040	Chain holder pin	1	_____		_____
8	038	Bottom stay bolt	3			
9	062	Guide roller	2	_____		_____
	063	Bottom guide roller	_____	1	_____	
10	065	Bottom collar	2	_____		_____
11	034	Bottom suspension plate A	1			
12	082	Spring washer	6			
13	081	Nut	6			
14	069	Name plate A	1			
15	066	Bottom chain guide	1	2		
16	1052	Bottom idle sheave assembly	1	2		
17	182	Thrust needle bearing	2	4		
18	5054	Bottom shaft assembly	1	2		
19	2021	Bottom hook assembly	1			
20	024	Hook nut	1			
21	087	Stopper screw	1			
22	023	Bearing cover	1			
23	022	Thrust bearing	1			
24	030	Bottom yoke	1			
25	021	Bottom hook	1			
26	1071	Safety latch assembly	1			

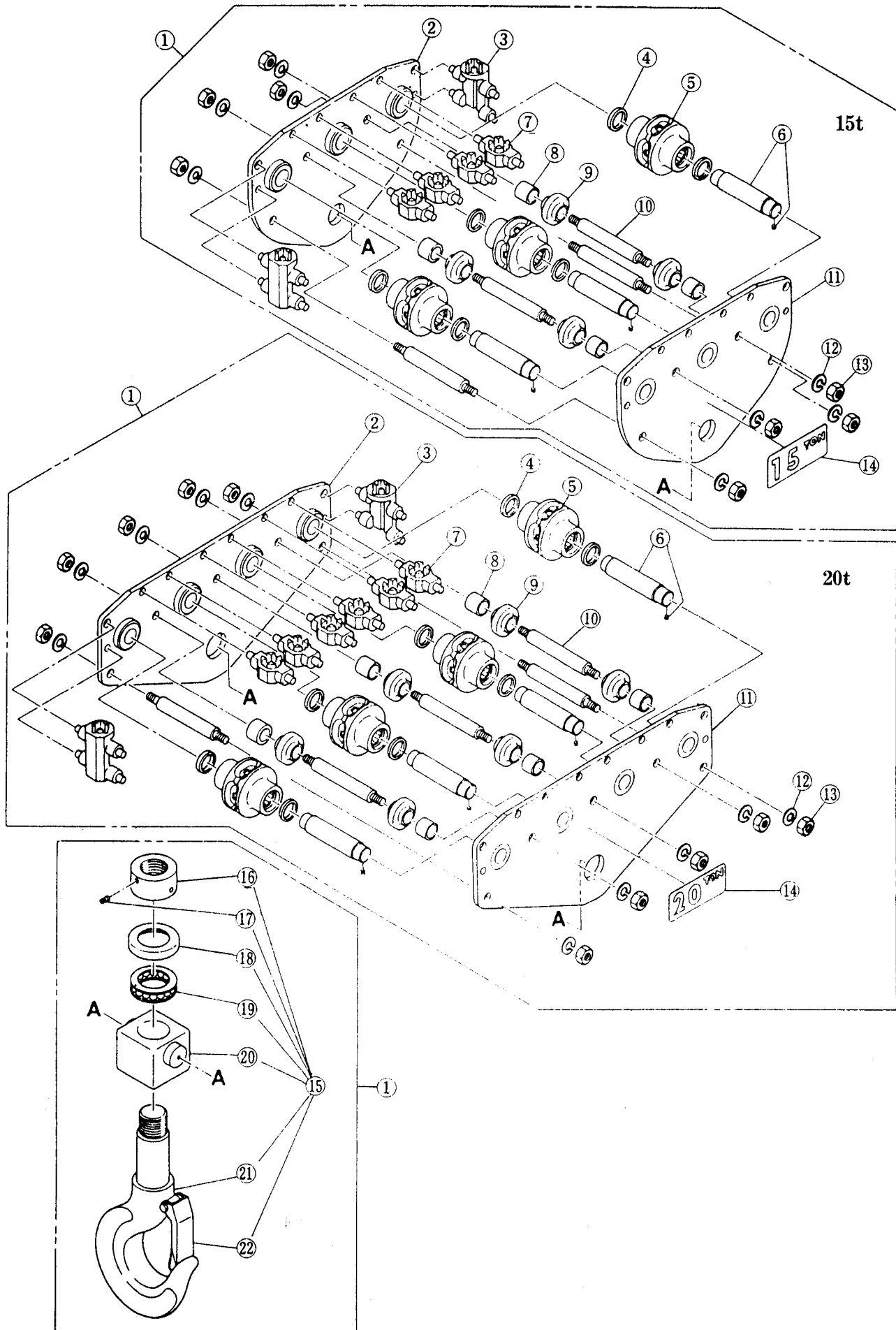


Fig No.	Part No.	Part name	Single speed			
			No. per Hoist		15t	20t
			15t	20t		

Bottom hook parts

15t, 20t

1	1021	Bottom hook complete set	1			
2	5035	Bottom suspension plate B assembly	1			
3	066	Bottom chain guide	2			
4	182	Thrust needle bearing	6	8		
5	1052	Bottom idle sheave assembly	3	4		
6	5054	Bottom shaft assembly	3	4		
7	067	Bottom cross guide	4	6		
8	065	Bottom collar	4	6		
9	062	Guide roller	4	6		
10	038	Bottom stay bolt	4	7		
11	5034	Bottom suspension plate A assembly	1			
12	082	Spring washer	8	14		
13	081	Nut	8	14		
14	069	Name plate A	1			
15	2021	Bottom hook assembly	1			
16	024	Hook nut	1			
17	087	Stopper screw	1			
18	023	Bearing cover	1			
19	022	Thrust bearing	1			
20	030	Bottom yoke	1			
21	021	Bottom hook	1			
22	1071	Safety latch assembly	1			

# E ELECTRIC PARTS

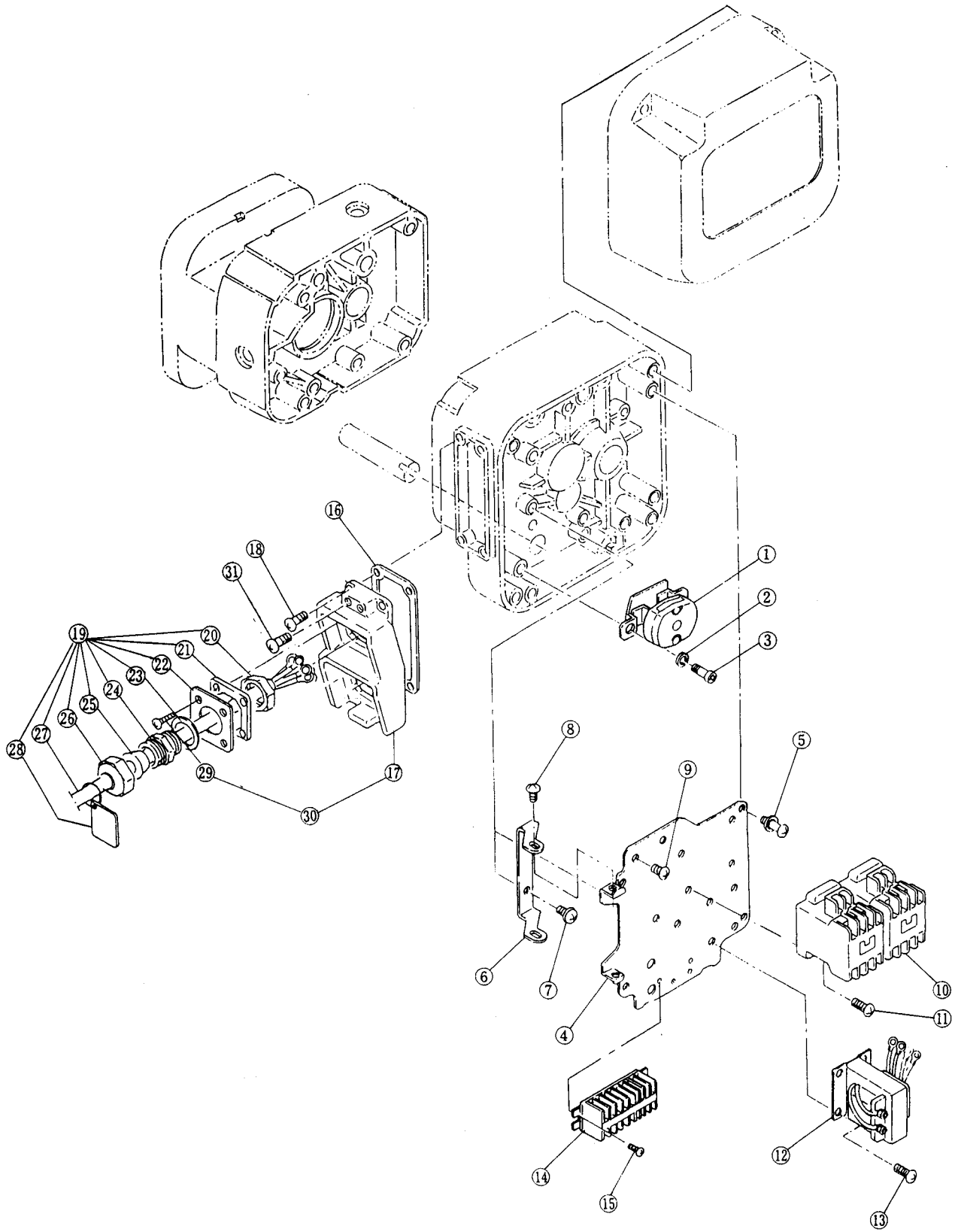


Fig No.	Part No.	Part name	Single speed									
			No. per hoist					Capacity				
			7.5t	10t(L)	10t(S)	15t	20t	7.5t	10t(L)	10t(S)	15t	20t

Electric Parts

1	1551	Limit switch assembly	1					2				
2	354	Spring washer	3					6				
3	353	Socket bolt	3					6				
4	451	Plate	1					2				
5	445	Plate screw	4					8				
6	442	Hinge	1					2				
7	446	Machine screw with spring washer	2					4				
8	443	Pan head machine screw	2					4				
9	616	Machine screw with spring washer	1					2				
10	578	Electromagnetic contactor	1					2				
11	612	Machine screw with spring washer	4					8				
12	577	Transformer	1					2				
13	611	Machine screw with spring washer	4					8				
14	581	Terminal plate 9P	1					2				
15	614	Machine screw with spring washer	2					4				
16	512	Socket frame packing	1					2				
18	516	Machine screw with spring washer	4					8				
30	1513	Terminal cover assembly						1				
17	513	Terminal cover	1					2				
29	537	Tapping flat head machine screw	8					16				
31	435	Machine screw with spring washer	2					4				

Note: Fig No 14 and 15 are not in use for 575V 60Hz.

For ER/ERSG

19	1771	Power supply cable assembly	1									
20	344	Cord holder nut	1									
21	350	Cord holder plate	1									
22	352	Cord holder plate packing	1									
23	343	Cord packing	1									
24	342	Cord holder B	1									
25	351	Cord holder packing	1									
26	341	Cord holder A	1									
27	771	Power supply cable 4C	1									
28	775	Tag F	1									

Note: Refer to 'Control Station and Cable Parts' section on power supply parts for 10t(S), 15t and 20t.

# F PUSH BUTTON CONTROL STATION PARTS

7.5t, 10t(L)

10t(S), 15t, 20t

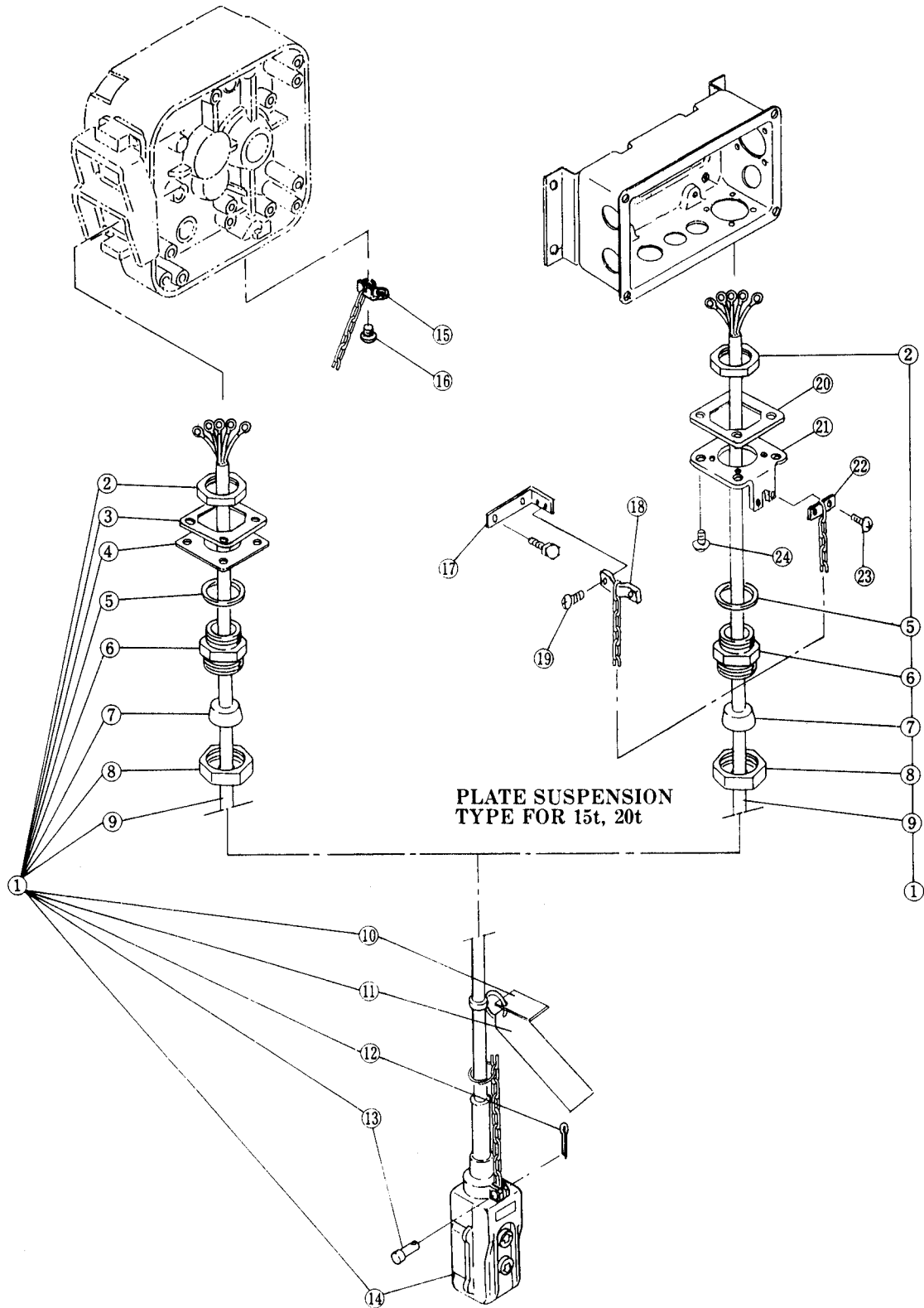


Fig No.	Part No.	Part name	Single speed					
			No. per Hoist	Capacity				
				7.5t	10t(L)	10t(S)	15t	20t

Push button control station parts

<7.5t,10t(L)>

1	1781	Push button cord 3C assembly	1					
2	572	Cord holder nut	1					
3	514	Cord holder plate packing	1					
4	515	Cord holder plate	1					
5	571	Cord packing	1					
6	570	Cord holder B	1					
7	574	Cord holder packing	1					
8	569	Cord holder A	1					
9	557	Push button cord 4C	1					
10	913	Tag S	1					
11	565	Warning tag K	1					
12	626	Cord support pin B	1					
13	627	Split pin	1					
14	1561	2 Push button switch S assembly	1					
15	535	Cord support wire stopper	1					
16	124	Machine screw with spring washer	2					

<10t(S),15t,20t>

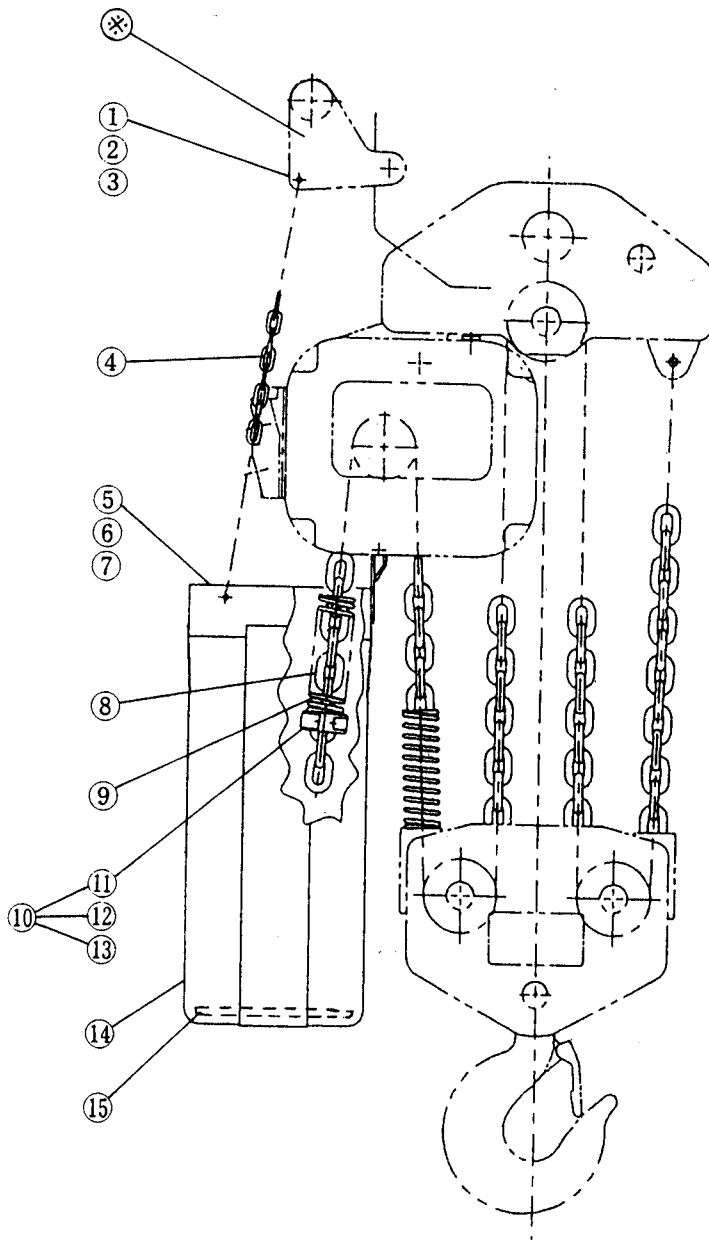
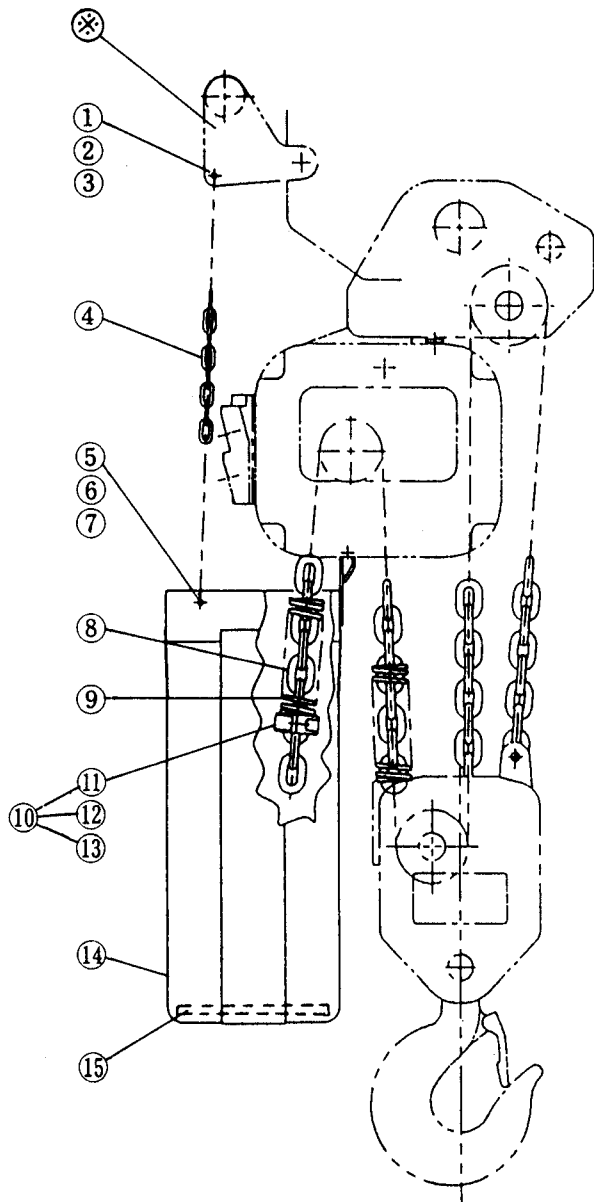
1	1557	Push button cord 3C assembly	1					
2	572	Cord holder nut	1					
5	571	Cord packing	1					
6	570	Cord holder B	1					
7	574	Cord holder packing	1					
8	569	Cord holder A	1					
9	557	Push button cord 4C	1					
10	913	Tag S	1					
11	565	Warning tag K	1					
12	626	Cord support pin B	1					
13	627	Split pin	1					
14	1561	2 Push button switch S assembly	1					
17	225	Connection plate S	1					
18	535	Cord support wire stopper	1					
19	536	Machine screw with spring washer	2					
20	818	Terminal cover packing	1					
21	815	Socket holder	1					
22	817	Machine screw with spring washer	2					
23	816	Cord chain stopper	1					
24	820	Machine screw with spring washer	4					



# G CHAIN CONTAINER PARTS

7.5t,

10t(L)



\* Refer Trolley Parts List

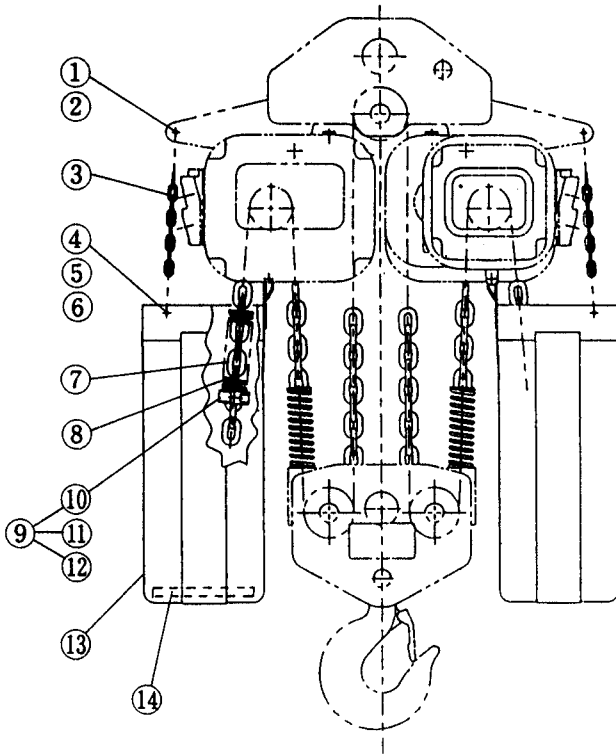
Fig No.	Part No.	Part name	Single speed		
			No. per Hoist	Capacity	
				7.5t	10t(L)

Chain container parts

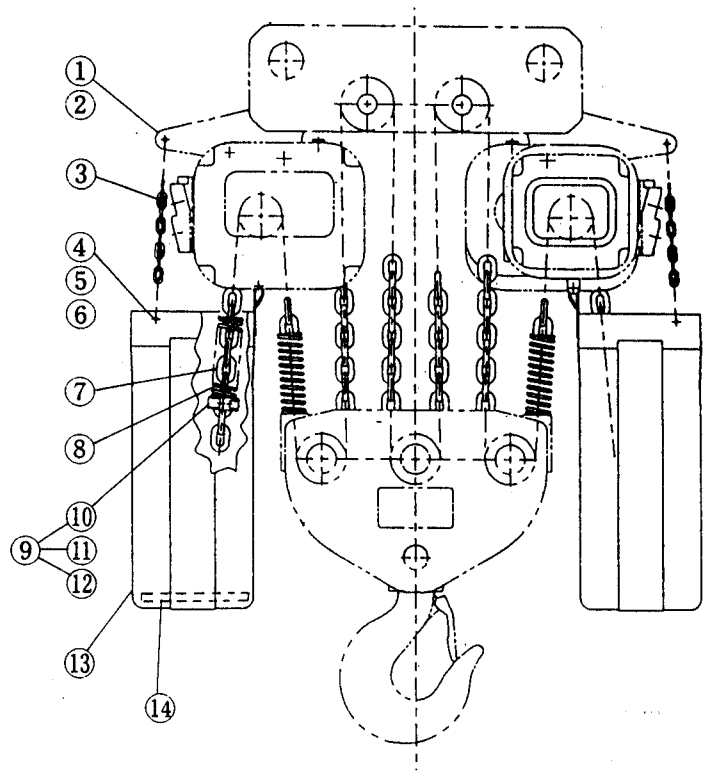
7.5t,10t(L)

1	981	Socket bolt	2		
2	983	U nut	2		
3	984	Washer	2		
4	975	Container chain	2		
5	971	Socket bolt	2		
6	973	U nut	2		
7	974	Washer	2		
8	954	Load chain	1		
9	047	Chain spring	2		
10	—	Stopper assembly	1		
11	045	Stopper	2		
12	090	Socket bolt	2		
13	091	Spring washer	2		
14	5930	Chain container S	1		
	5931	Chain container L	1		
15	938	Chain plate	1		

10t(S)



15t



20t

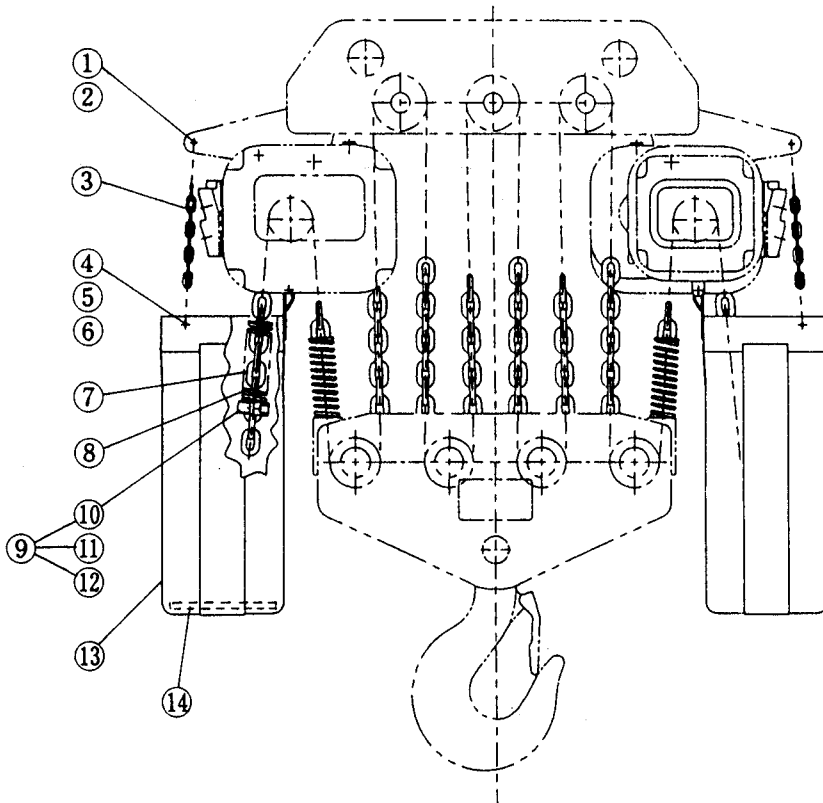


Fig No.	Part No.	Part name	Single speed		
			No. per Hoist	Capacity	
				10t(S)	15t

Chain container parts

10t(S),15t,20t

1	981	Socket bolt	2		
2	983	U nut	2		
3	975	Container chain	4		
4	971	Socket bolt	4		
5	973	U nut	4		
6	974	Washer	4		
7	954	Load chain	1		
8	047	Chain spring	4		
9	—	Stopper assembly	1		
10	045	Stopper	4		
11	090	Socket bolt	4		
12	091	Spring washer	4		
13	5930	Chain container S	2		
	5931	Chain container L	2		
14	938	Chain plate	2		

# PARTS FOR PLATE SUSPENSION TYPE

## H CONTROL STATION AND CABLE PARTS

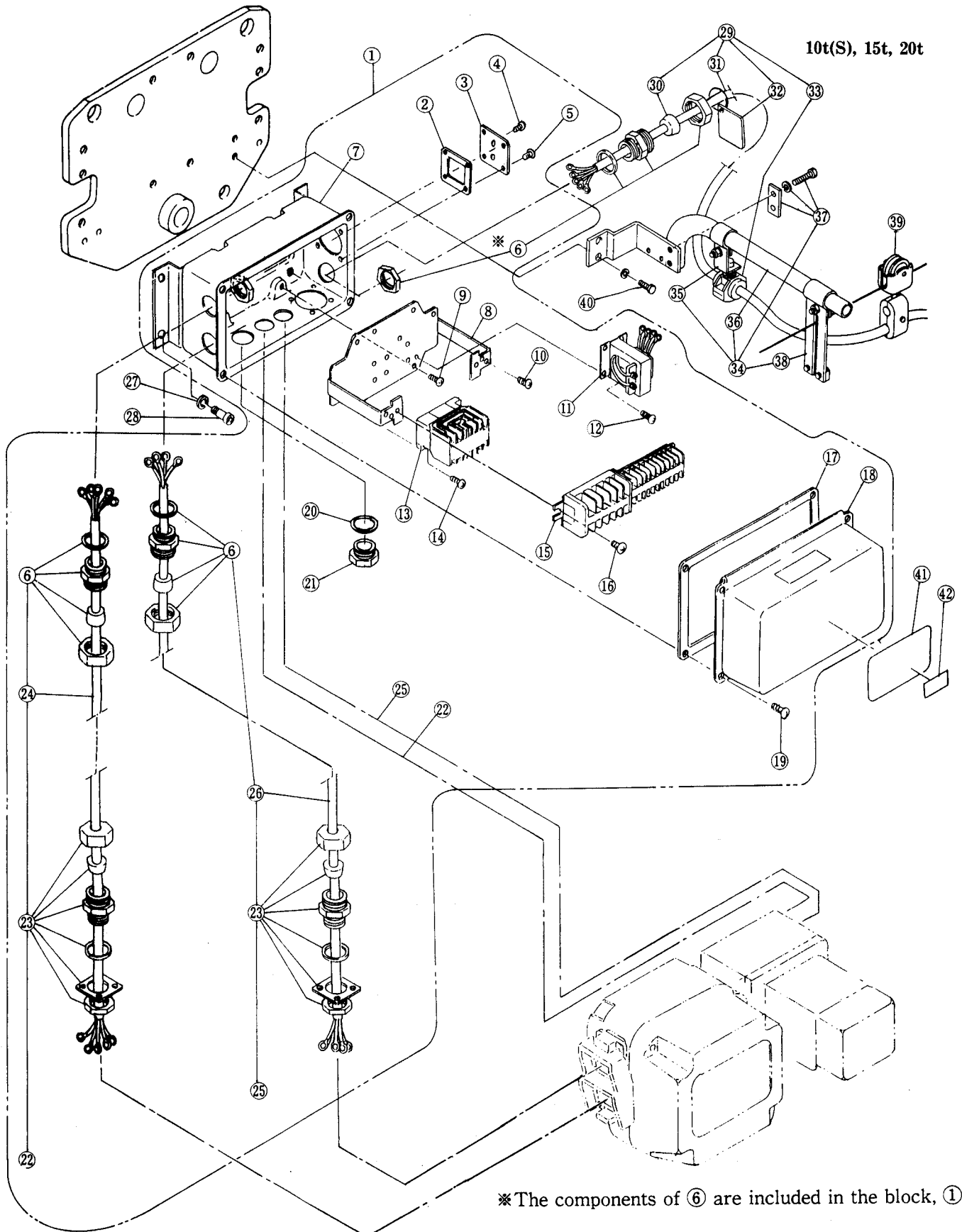


Fig No.	Part No.	Part name	Single speed			
			No. per Hoist	Capacity		
				10t	15t	20t
Control station and cable parts						
1	1401	Switch box complete set	1			
2	818	Cord holder support packing	1			
3	347	Cord cover	1			
4	432	Machine screw with spring washer	2			
5	348	Machine screw with spring washer	4			
6	344	Cord holder nut	1			
	343	Cord packing	1			
	342	Cord holder B	1			
	341	Cord holder A	1			
7	2401	Switch box assembly	1			
8	5445	Plate assembly	1			
9	454	Machine screw with spring washer	4			
10	451	Machine screw with spring washer	4			
11	881	Transformer	1			
12	455	Machine screw with spring washer	3			
13	874	Electromagnetic contactor	1			
14	459	Machine screw with spring washer	2			
15	853	Terminal plate 18 p	1			
16	452	Machine screw with spring washer	2			
17	421	Switch box packing	1			
18	411	Switch box lid	1			
19	422	Machine screw with spring washer	4			
20	343	Cord packing	1			
21	345	Holder cover	1			
22	1761	Cable 3C complete set	1			
23	344	Cord holder nut	1			
	350	Cord holder plate	1			
	352	Cord holder plate packing	1			
	343	Cord packing	1			
	342	Cord holder B	1			
	351	Cord holder packing	1			
	341	Cord holder A	1			
24	761	Power supply cable 3C	1			
25	1751	Cable 4C complete set	1			
26	751	Cable 4C	1			
27	407	Spring lock washer	1			
28	406	Socket bolt	1			
29	1771	Power supply cable assembly	1			
30	351	Cord holder packing	1			
31	771	Power supply cable 4C	1			
32	775	Tag F	1			
33	1724	Cable support 19 assembly	1			
34	1491	Cable support bar complete set	1			
35	492	Cable support arm	1			
	497	Bolt	1			
	498	Spring lock washer	1			
	499	Nut	1			
36	491	Cable support bar	1			
37	501	Support bar holder	1			
	505	Spring lock washer	2			
	506	Bolt	2			
38	1493	Wire guide assembly	1			
39	1641	Cable hanger 15 assembly	1			
40	482	Socket bolt	2			
41	700	Name plate B	1			
42	721	Name plate C	1			

NOTE: Refer to the page 11 about power supply cable assembly for 7.5t,10t(L).

# I TOP SUSPENSION PLATE PARTS

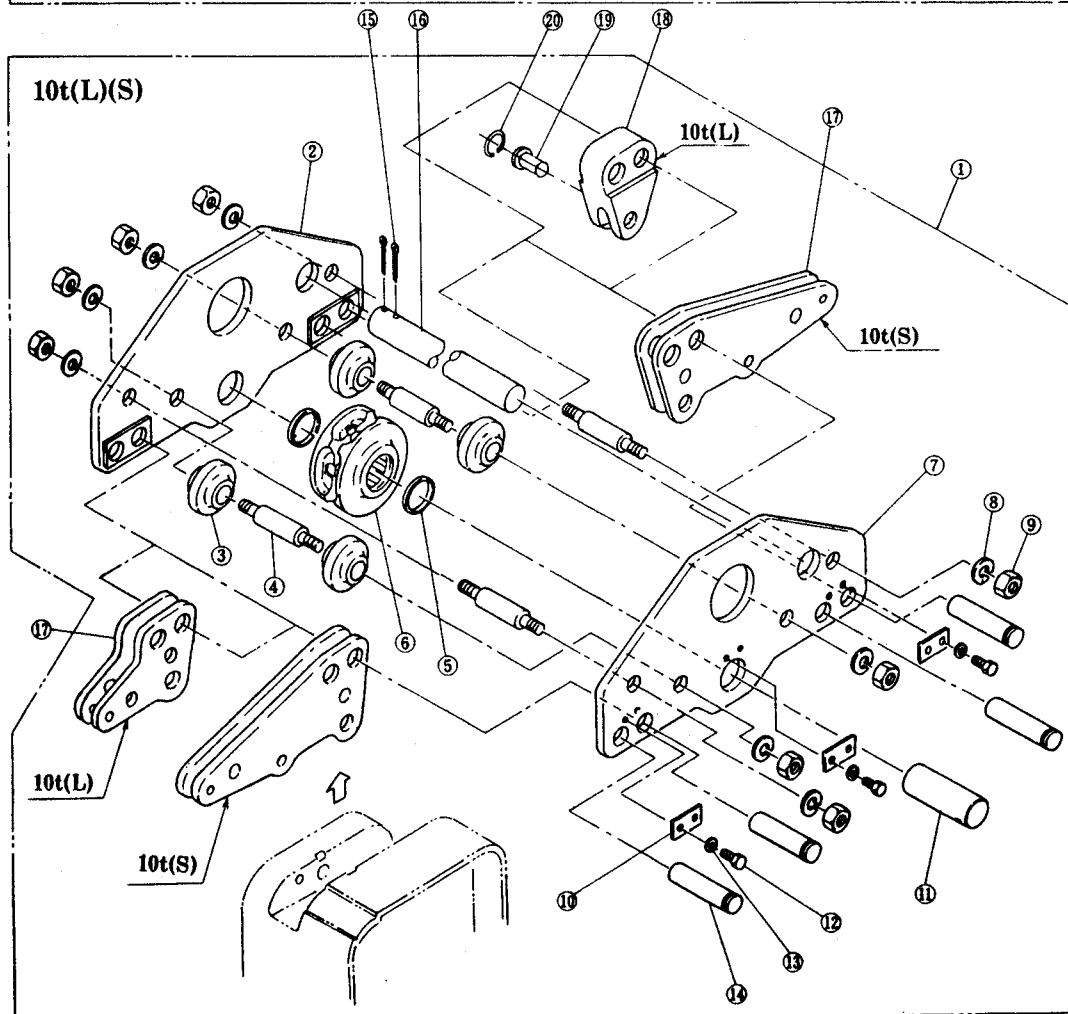
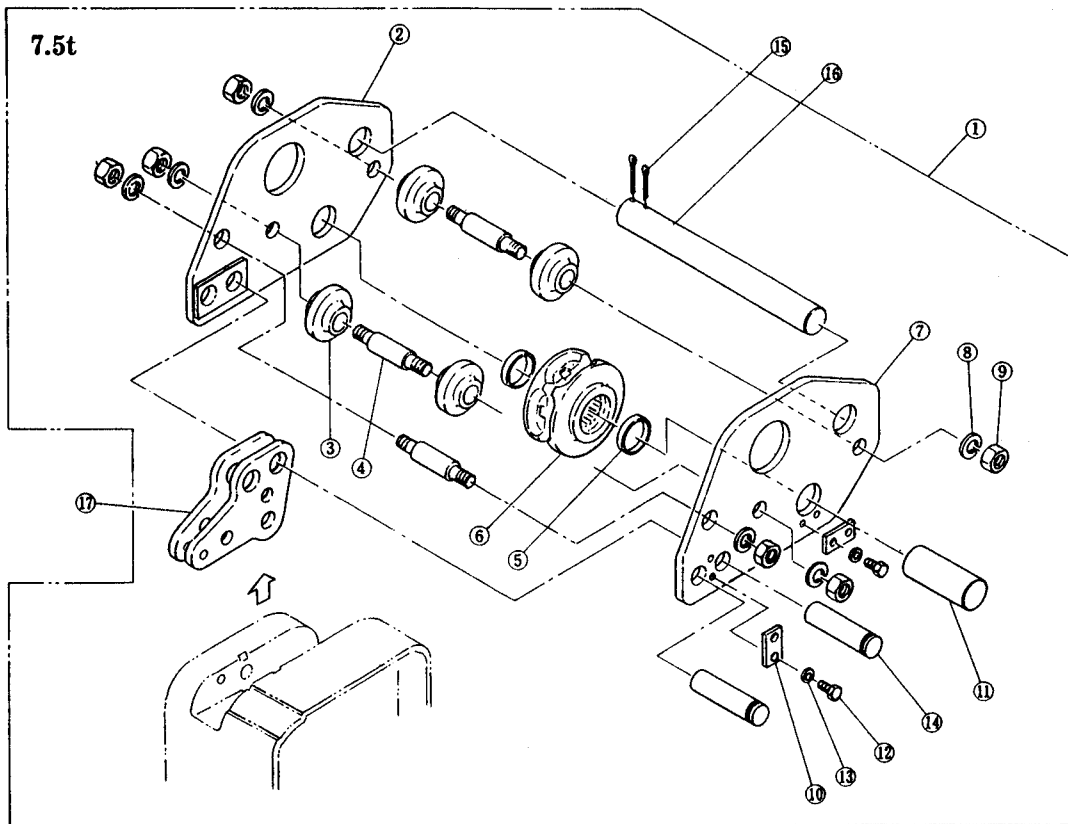


Fig No.	Part No.	Part name	Single speed					
			No. per Hoist			7.5t	10t(L)	10t(S)
			7.5t	10t(L)	10t(S)			

Top suspension plate parts

7.5t, 10t(L), 10t(S)

1	1003	Top suspension plate assembly	1				
2	5004	Top suspension plate B assembly	1				
3	062	Guide roller	4				
4	007	Top stay bolt	3	4			
5	182	Thrust needle bearing	2				
6	1051	Top idle sheave assembly	1				
7	5003	Top suspension plate A assembly	1				
8	082	Spring washer	6	8			
9	081	Nut	6	8			
10	056	Shaft stopper	2	3			
11	053	Top shaft	1				
12	083	Socket bolt	4	6			
13	084	Spring washer	4	6			
14	008	Suspender shaft	2	4			
15	089	Split pin	2				
16	010	Stopper shaft	1				
	019	Stopper shaft for wide flange	1				
17	5005	Connection yoke assembly	1	2			
18	017	Chain holder	_____	1	_____	_____	_____
19	041	Chain pin	_____	1	_____	_____	_____
20	092	Snap ring	_____	1	_____	_____	_____



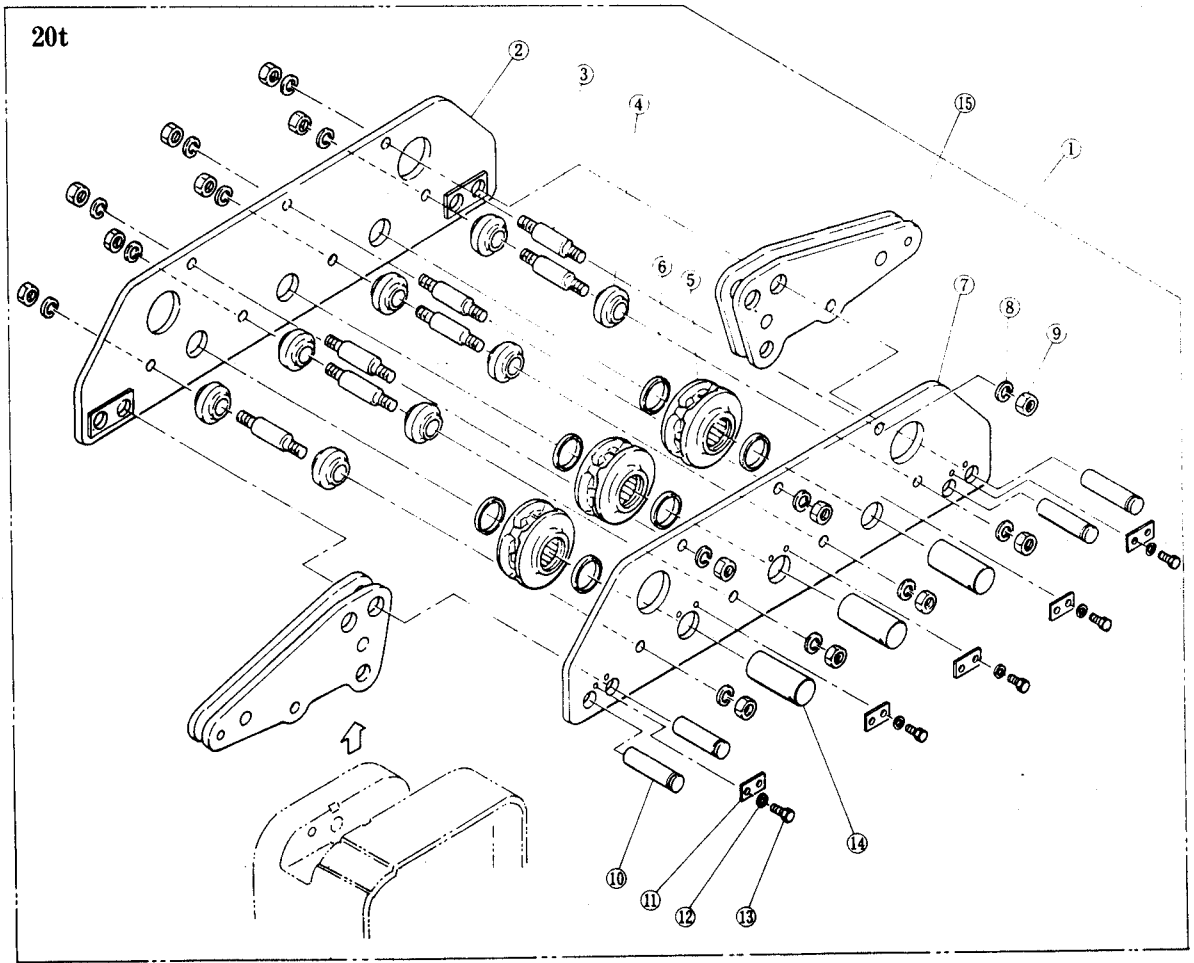
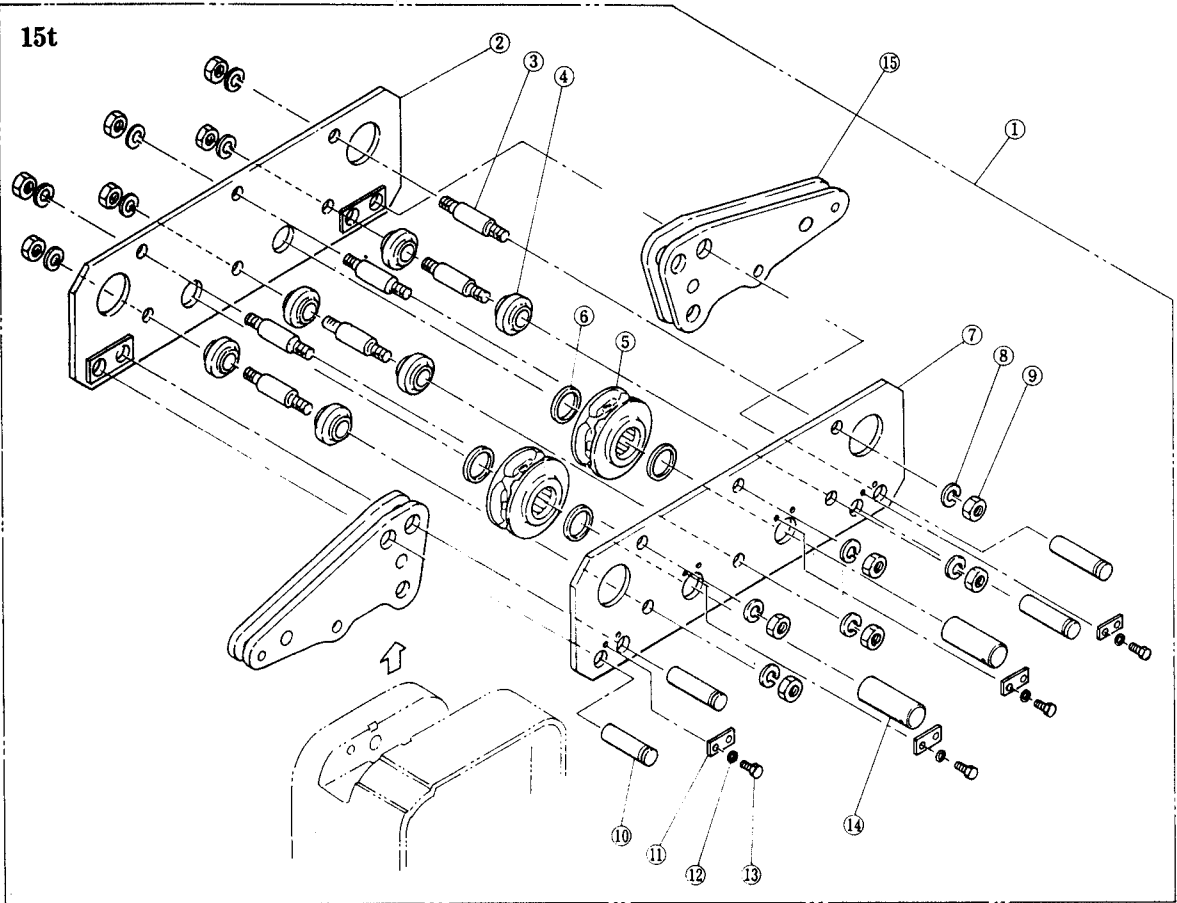


Fig No.	Part No.	Part name	Single speed			
			No. per Hoist		15t	20t
			15t	20t		

Top suspension plate parts

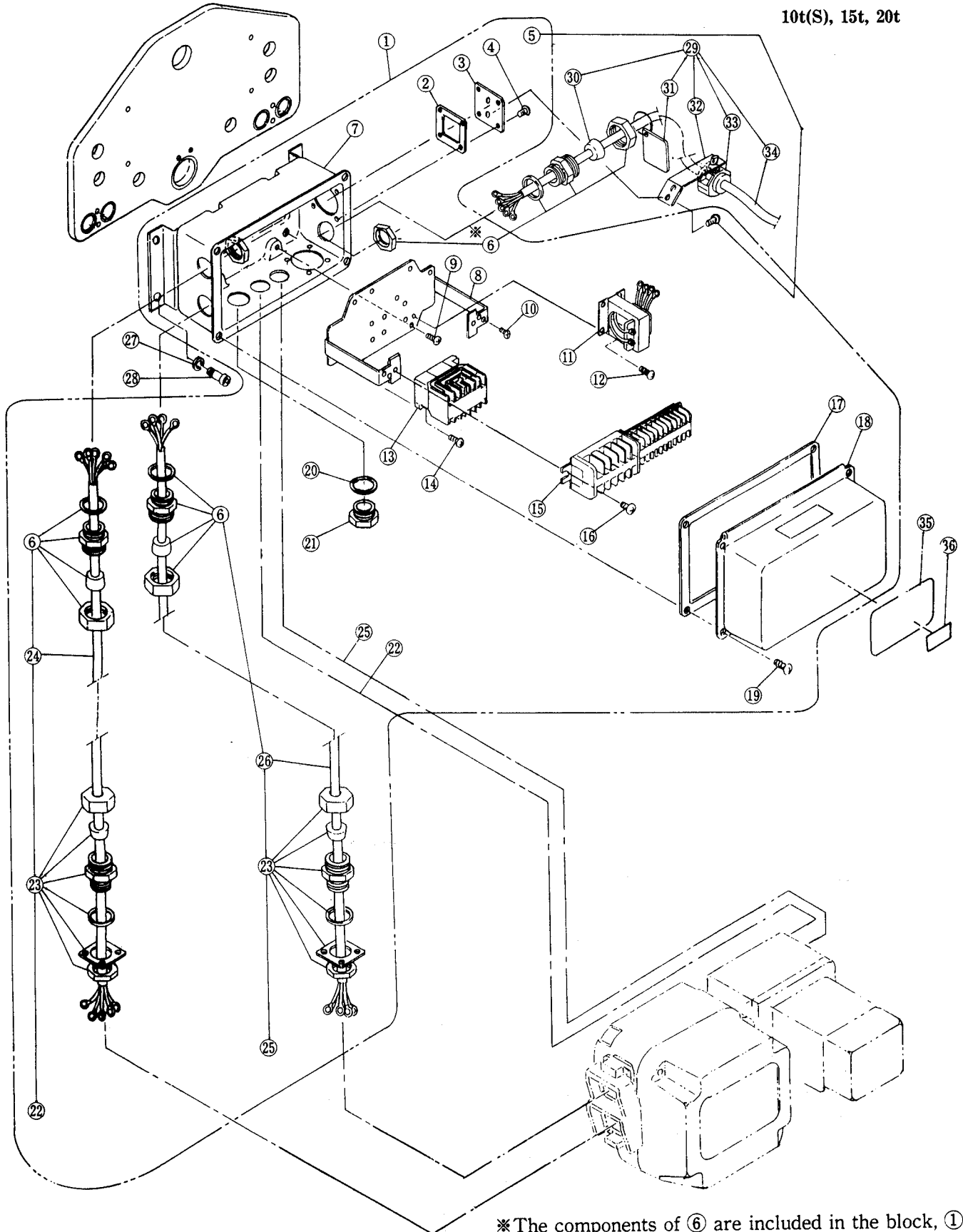
15t, 20t

1	1003	Top suspension plate assembly	1			
2	5004	Top suspension plate B assembly	1			
3	007	Top stay bolt	6	8		
4	062	Guide roller	6	8		
5	1051	Top idle sheave assembly	2	3		
6	182	Thrust needle bearing	4	6		
7	5003	Top suspension plate A assembly	1			
8	082	Spring washer	12	14		
9	081	Nut	12	14		
10	008	Suspender shaft	4			
11	056	Shaft stopper	4	5		
12	084	Spring washer	8	10		
13	083	Socket bolt	8	10		
14	053	Top shaft	2	3		
15	5005	Connection yoke assembly	2			

# PARTS FOR HOOK TYPE

## J CONTROL STATION AND CABLE PARTS

10t(S), 15t, 20t

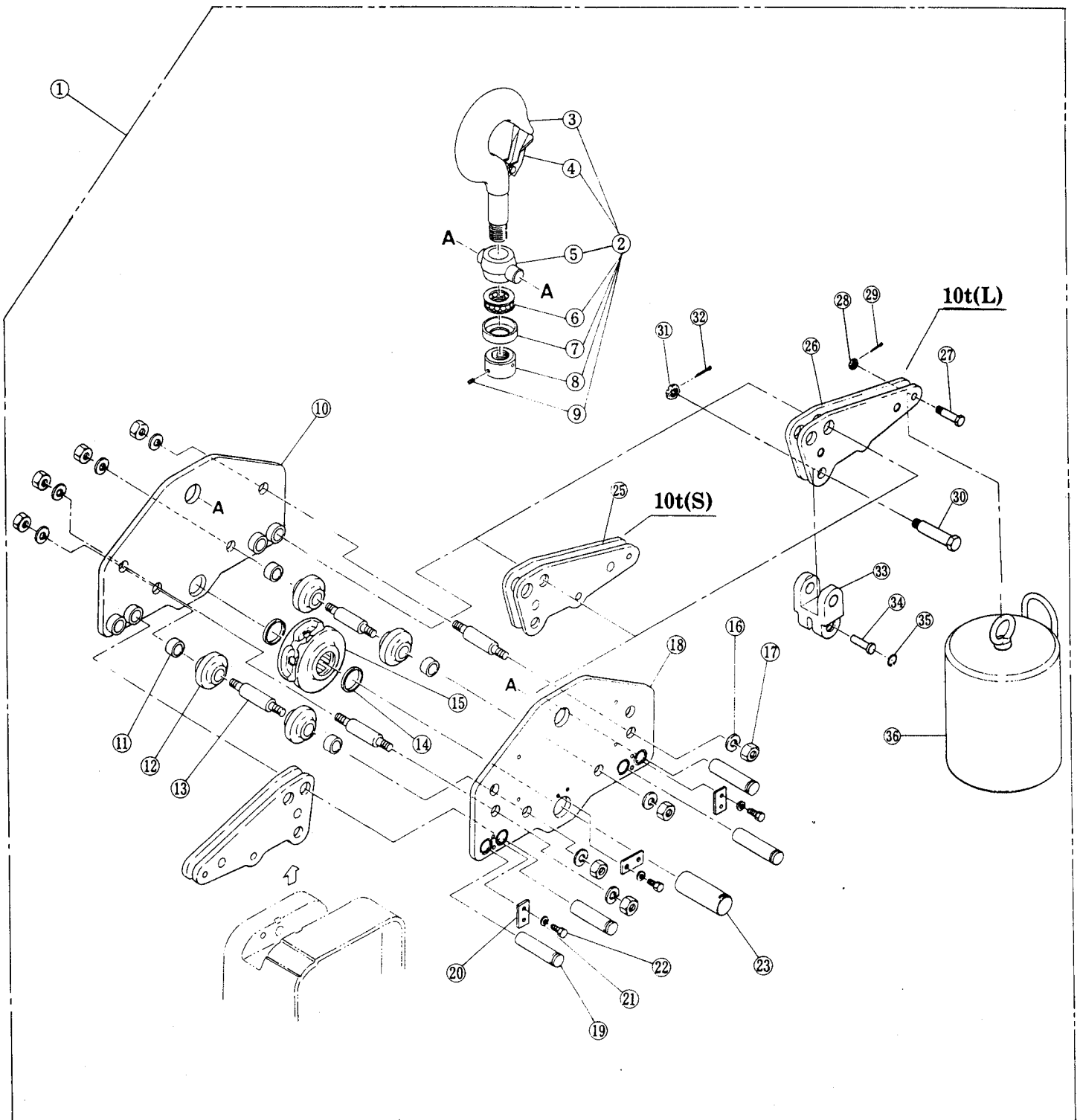


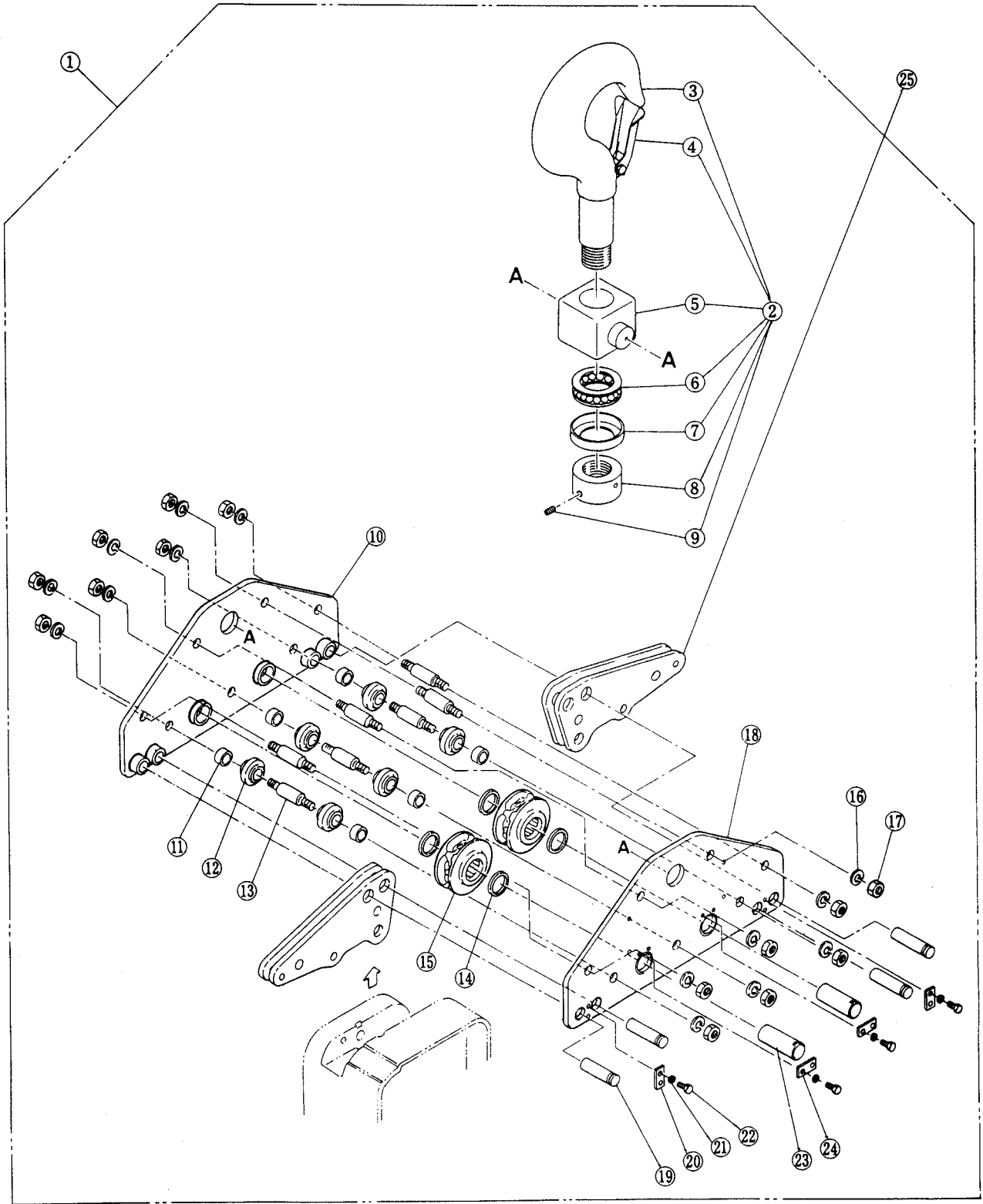
※ The components of ⑥ are included in the block, ①.

Fig No.	Part No.	Part name	Single speed			
			No. per Hoist	Capacity		
				10t	15t	20t
<b>Control station and cable parts</b>						
1	1401	Switch box complete set	1			
2	818	Cord holder support packing	1			
3	347	Cord cover	1			
4	432	Machine screw with spring washer	2			
5	348	Machine screw with spring washer	4			
6	344	Cord holder nut	1			
	343	Cord packing	1			
	342	Cord holder B	1			
	341	Cord holder A	1			
7	2401	Switch box assembly	1			
8	5445	Plate assembly	1			
9	454	Machine screw with spring washer	4			
10	451	Machine screw with spring washer	4			
11	881	Transformer	1			
12	455	Machine screw with spring washer	3			
13	874	Electromagnetic contactor	1			
14	459	Machine screw with spring washer	2			
15	853	Terminal plate 18 p	1			
16	452	Machine screw with spring washer	2			
17	421	Switch box packing	1			
18	411	Switch box lid	1			
19	422	Machine screw with spring washer	4			
20	343	Cord packing	1			
21	345	Holder cover	1			
22	1761	Cable 3C complete set	1			
23	344	Cord holder nut	1			
	350	Cord holder plate	1			
	352	Cord holder plate packing	1			
	343	Cord packing	1			
	342	Cord holder B	1			
	351	Cord holder packing	1			
24	341	Cord holder A	1			
	761	Power supply cable 3C	1			
25	1751	Cable 4C complete set	1			
26	751	Cable 4C	1			
27	407	Spring lock washer	1			
28	406	Socket bolt	1			
29	1771	Power supply cable 4C assembly	1			
30	351	Cord holder packing	1			
31	786	Tag F	1			
32	541	Cable support arm assembly	1			
33	1724	Cable support 19 assembly	1			
34	771	Power supply cable 4C	1			
35	700	Name plate B	1			
36	721	Name plate C	1			

# K TOP HOOK PARTS

10t





20t

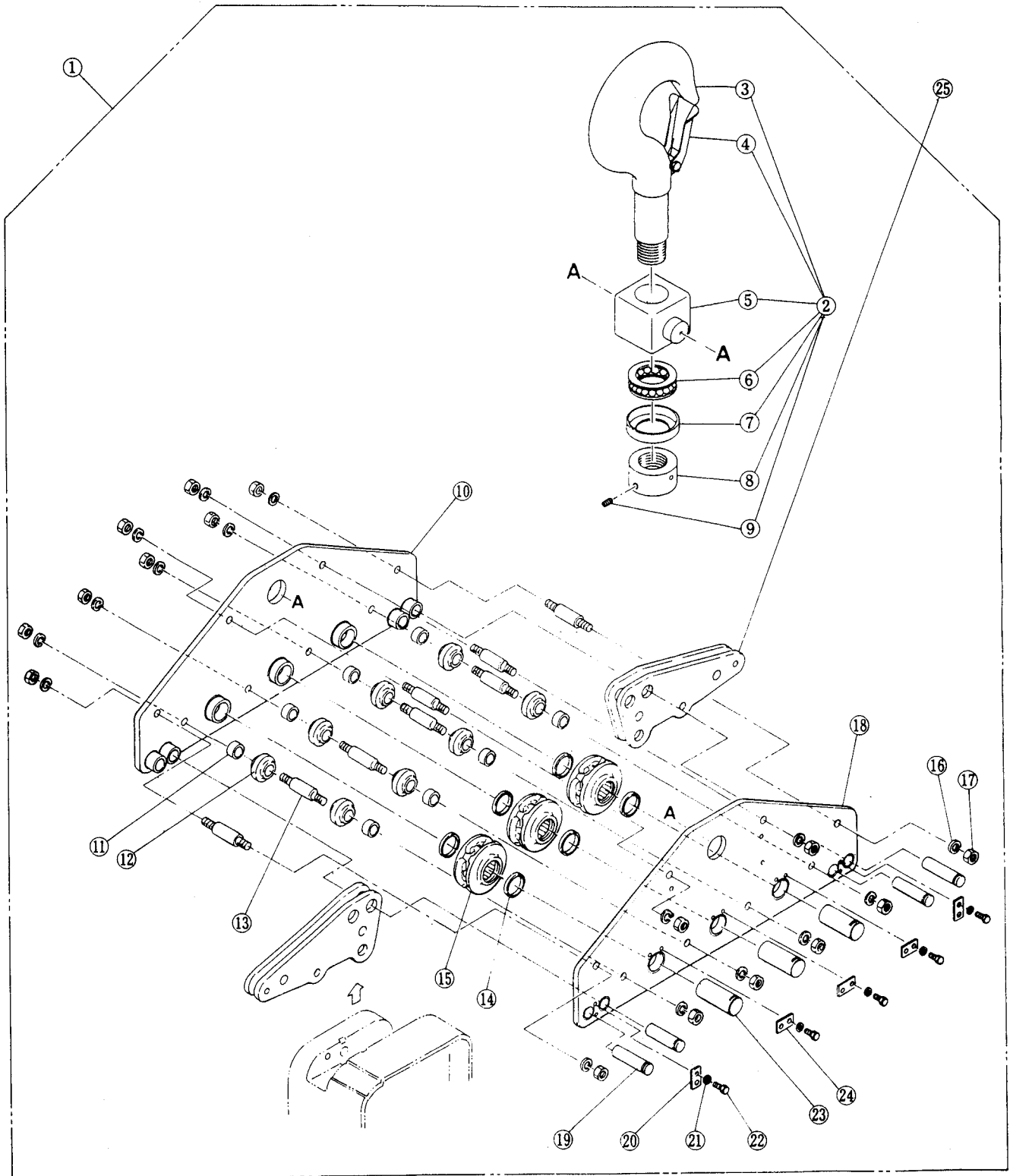


Fig No.	Part No.	Part name	Single speed							
			No. per hoist				Capacity			
			10t(L)	10t(S)	15t	20t	10t(L)	10t(S)	15t	20t

Top hook parts

1	1011	Top hook complete set			1							
2	2021	Bottom hook assembly			1							
3	021	Bottom hook			1							
4	1071	Safety latch assembly			1							
5	030	Bottom yoke			1							
6	022	Thrust bearing			1							
7	023	Bearing cover			1							
8	024	Hook nut			1							
9	087	Stopper screw			1							
10	5012	Top hook complete set			1							
11	065	Bottom collar		4	6	8						
12	062	Guide roller		4	6	8						
13	038	Bottom stay bolt		4	7	8						
14	182	Thrust needle bearing		2	4	6						
15	1052	Bottom idle sheave assembly		1	2	3						
16	082	Spring washer		8	14	16						
17	081	Nut		8	14	16						
18	5011	Top suspension plate A assembly			1							
19	013	Suspender shaft B			4							
20	056	Shaft stopper A		3	2							
21	084	Spring washer		6	8	10						
22	083	Socket bolt		6	8	10						
23	057	Top shaft B		1	2	3						
24	060	Shaft stopper B			2	3						
25	5005	Connection yoke assembly	1		2							
26	5155	Connection yoke assembly	1									
27	165	Chain pin	1									
28	166	Slotted nut	1									
29	167	Split pin	1									
30	161	Yoke bolt	1									
31	162	Slotted nut	1									
32	163	Split pin	1									
33	171	Chain yoke L	1									
34	172	Chain pin	1									
35	173	Snap ring	1									
36	5157	Balance weight assembly	1									





**KITO** CORP.

3-37-4, Yoyogi, Shibuya-ku,  
Tokyo 151-0053, Japan  
Tel. : 03-5371-7341  
Fax. : 03-5371-7349  
Tlx. : 222-2942 KITO J  
E-mail : [overseas@kito.co.jp](mailto:overseas@kito.co.jp)  
URL [http : //www.kito.co.jp](http://www.kito.co.jp)

**KITO** CANADA INC.  
CHAIN HOISTS

309-3815 1ST AVENUE  
BURNABY, BC V5C 3V6  
Ph : (604) 291-9955  
Fx : (604) 294-8855  
E-mail : [kitocan@axionet.com](mailto:kitocan@axionet.com)