



**ER SERIES
ELECTRIC CHAIN HOIST
MODEL ER 1**

**PARTS
LIST**

125kg through 5t capacity

Approved by CSA

IMPORTANT

When ordering replacement parts, please specify the following points.

1. Voltage
2. Hoist capacity, hoisting speed (H, S, M, C or L) and single or dual speed hoist
3. Model number in name plate
4. Correct part names and numbers
5. Lineal length of push button cord, chain lift or power supply cable

CONTENTS

BODY SIZE B,C,D PARTS

A. HOUSING AND MOTOR PARTS	1
B. GEARING PARTS	5
C. HOOK PARTS	9
D. CHAINING PARTS	13
E. ELECTRIC PARTS	17
F. CONTROL STATION PARTS	21
Direct Wiring	21

BODY SIZE E PARTS

A. HOUSING AND MOTOR PARTS	25
B. GEARING PARTS	28
C. HOOK PARTS	31
D. CHAINING PARTS	34
E. ELECTRIC PARTS	37
F. CONTROL STATION PARTS	41
Direct Wiring	41

BODY SIZE B,C,D PARTS

A HOUSING AND MOTOR PARTS

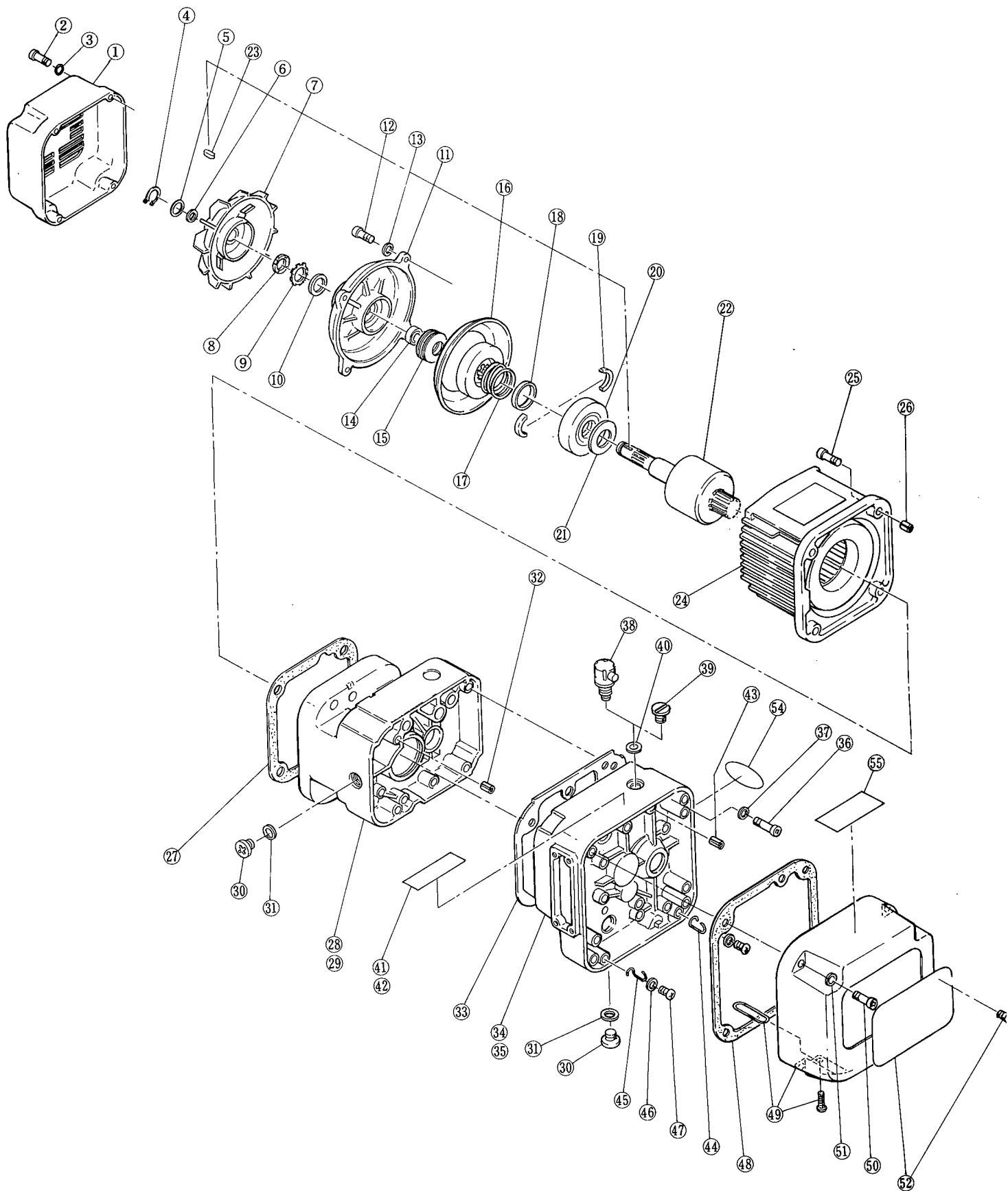


Fig No.	Part No.	Part Name	No. per Hoist	Size B					
				Single speed			Dual speed		
				001H	003S	005L	001HD	003SD	005LD

HOUSING AND MOTOR PARTS

Friction clutch

28	101	Body B	1						
35	103	Gear case F	1						
39	135	Oil plug B	1						
41	810	Name plate OF	1						

Mechanical brake with friction clutch (option)

29	99	Body C	1						
34	102	Gear case M	1						
38	1175	Oil cap assembly	1						
42	811	Name plate OM	1						

Common

1	107	Fan cover	1						
2	160	Socket bolt	4						
3	161	Toothed lock washer	4						
4	323	Snap ring	1						
5	322	Fan washer	1						
6	321	O ring	1						
7	108	Fan	1						
8	314	Nut	1						
9	315	Lock washer	1						
10	313	Spacer	1						
11	2106	Motor cover assembly	1						
12	158	Socket bolt	4						
13	159	Spring lock washer	4						
14	312	Collar M	1						
15	311	Coned disc spring M	4						
16	5212	Brake drum assembly	1						
17	214	Brake spring	1						
18	318	Collar	1						
19	317	Thrust disc	2						
20	503	Pull rotor	1						
21	316	Coned disc spring	1						
22	5502	Motor shaft with rotor	1						
23	320	Key	1						
24	5501V	Motor frame with stator (220/440V)	1						
	5501K	Motor frame with stator (575V)	1						
25	155	Socket bolt	4						
26	138	Set pin S	2						
27	118	Packing M	1						
30	133	Oil plug	2						
31	136	Plug packing	2						
32	137	Set pin S	2						
33	116	Packing G	1						
36	151	Socket bolt	4						
37	152	Toothed lock washer	4						
40	173	Eyebolt packing	1						
43	139	Spring pin	1						
44	431	Cover suspender A	1						
45	432	Cover suspender B	1						
46	436	Washer	2						
47	435	Machine screw with spring washer	2						
48	117	Packing C	1						
49	2104	Controller cover assembly	1						
50	153	Socket bolt	4						
51	154	Spring lock washer	4						
52	800V	Name plate B (Hook-ER 220/440V)	1	---			---	---	---
	800K	Name plate B (Hook-ER 575V)	1	---			---	---	---
	800SSV	Name plate B (Single standard-speed ERM for 220/440V)	1	---			---	---	---
	800SSK	Name plate B (Single standard-speed ERM for 575V)	1	---			---	---	---
	801	Name plate B (Blank)	1						
54	868L	Name plate AD(L)	1	---	---		---	---	---
	868S	Name plate AD(S)	1	---	---		---	---	---
	868H	Name plate AD(H)	1	---	---		---	---	---
55	935	Warning label EE	1						

A: Housing and Motor Parts

Note: Part No. 801 is applied to all ERMs except for single-standard speed ERM.

Fig No.	Part No.	Part Name	No. per Hoist	Size C					
				Single speed				Dual speed	
				003H	005S	010L	010M	003HD	005SD

HOUSING AND MOTOR PARTS

Friction clutch

28	101	Body B	1						
35	103	Gear case F	1						
39	135	Oil plug B	1						
41	810	Name plate OF	1						

Mechanical brake with friction clutch (option)

29	99	Body C	1						
34	102	Gear case M	1						
38	1175	Oil cap assembly	1						
42	811	Name plate OM	1						

Common

1	107	Fan cover	1						
2	160	Socket bolt	4						
3	161	Toothed lock washer	4						
4	323	Snap ring	1						
5	322	Fan washer	1						
6	321	O ring	1						
7	108	Fan	1						
8	314	Nut	1						
9	315	Lock washer	1						
10	313	Spacer	1						
11	2106	Motor cover assembly	1						
12	158	Socket bolt	4						
13	159	Spring lock washer	4						
14	312	Collar M	1						
15	311	Coned disc spring M	4						
16	5212	Brake drum assembly	1						
17	214	Brake spring	1						
18	318	Collar	1						
19	317	Thrust disc	2						
20	503	Pull rotor	1						
21	316	Coned disc spring	1						
22	5502	Motor shaft with rotor	1						
23	320	Key	1						
24	5501V	Motor frame with stator (220/440V)	1						
	5501K	Motor frame with stator (575V)	1						
25	155	Socket bolt	4						
26	138	Set pin S	2						
27	118	Packing M	1						
30	133	Oil plug	2						
31	136	Plug packing	2						
32	137	Set pin S	2						
33	116	Packing G	1						
36	151	Socket bolt	4						
37	152	Toothed lock washer	4						
40	173	Eyebolt packing	1						
43	139	Spring pin	1						
44	431	Cover suspender A	1						
45	432	Cover suspender B	1						
46	435	Washer	2						
47	436	Machine screw with spring washer	2						
48	117	Packing C	1						
49	2104	Controller cover assembly	1						
50	153	Socket bolt	4						
51	154	Spring lock washer	4						
52	800V	Name plate B (Hook-ER 220/440V)	1						
	800K	Name plate B (Hook-ER 575V)	1						
	800SSV	Name plate B (Single standard-speed ERM for 220/440V)	1						
	800SSK	Name plate B (Single standard-speed ERM for 575V)	1						
	801	Name plate B (Blank)	1						
54	868L	Name plate AD(L)	1						
	868M	Name plate AD(M)	1						
	868S	Name plate AD(S)	1						
	868H	Name plate AD(H)	1						
55	935	Warning label EE	1						

A: Housing and Motor Parts

Note: Part No. 801 is applied to all ERMs except for single-standard speed ERM.

Fig No.	Part No.	Part Name	No. per Hoist	Size D								
				Single speed					Dual speed			
				010S	015S	020L	020M	030C	010SD	015SD	020LD	

HOUSING AND MOTOR PARTS

Friction clutch

28	101	Body B	1									
35	103	Gear case F	1									
39	135	Oil plug B	1									
-41	810	Name plate OF	1									

Mechanical brake with friction clutch (option)

29	99	Body C	1									
34	102	Gear case M	1									
38	1175	Oil cap assembly	1									
42	811	Name plate OM	1									

Common

1	107	Fan cover	1									
2	160	Socket bolt	4									
3	161	Toothed lock washer	4									
4	323	Snap ring	1									
5	322	Fan washer	1									
6	321	O ring	1									
7	108	Fan	1									
8	314	Nut	1									
9	315	Lock washer	1									
10	313	Spacer	1									
11	2106	Motor cover assembly	1									
12	158	Socket bolt	4									
13	159	Spring lock washer	4									
14	312	Collar M	1									
15	311	Coned disc spring M	4									
16	5212	Brake drum assembly	1									
17	214	Brake spring	1									
18	318	Collar	1									
19	317	Thrust disc	2									
20	503	Pull rotor	1									
21	316	Coned disc spring	1									
22	5502	Motor shaft with rotor	1									
23	320	Key	1									
24	5501V	Motor frame with stator (220/440V)	1									
	5501K	Motor frame with stator (575V)	1									
25	155	Socket bolt	4									
26	138	Set pin S	2									
27	118	Packing M	1									
30	133	Oil plug	2									
31	136	Plug packing	2									
32	137	Set pin S	2									
33	116	Packing G	1									
36	151	Socket bolt	4									
37	152	Toothed lock washer	4									
40	173	Eyebolt packing	1									
43	139	Spring pin	1									
44	431	Cover suspender A	1									
45	432	Cover suspender B	1									
46	436	Washer	2									
47	435	Machine screw with spring washer	2									
48	117	Packing C	1									
49	2104	Controller cover assembly	1									
50	153	Socket bolt	4									
51	154	Spring lock washer	4									
52	800V	Name plate B (Hook-ER 220/440V)	1									
	800K	Name plate B (Hook-ER 575V)	1									
	800SSV	Name plate B (Single standard-speed ERM for 220/440V)	1									
	800SSK	Name plate B (Single standard-speed ERM for 575V)	1									
	801	Name plate B (Blank)	1									
54	868L	Name plate AD(L)	1									
	868C	Name plate AD(C)	1									
	868M	Name plate AD(M)	1									
	868S	Name plate AD(S)	1									
55	935	Warning label EE	1									

A: Housing and Motor Parts

Note: Part No. 801 is applied to all ERMs except for single-standard speed ERM.

B GEARING PARTS

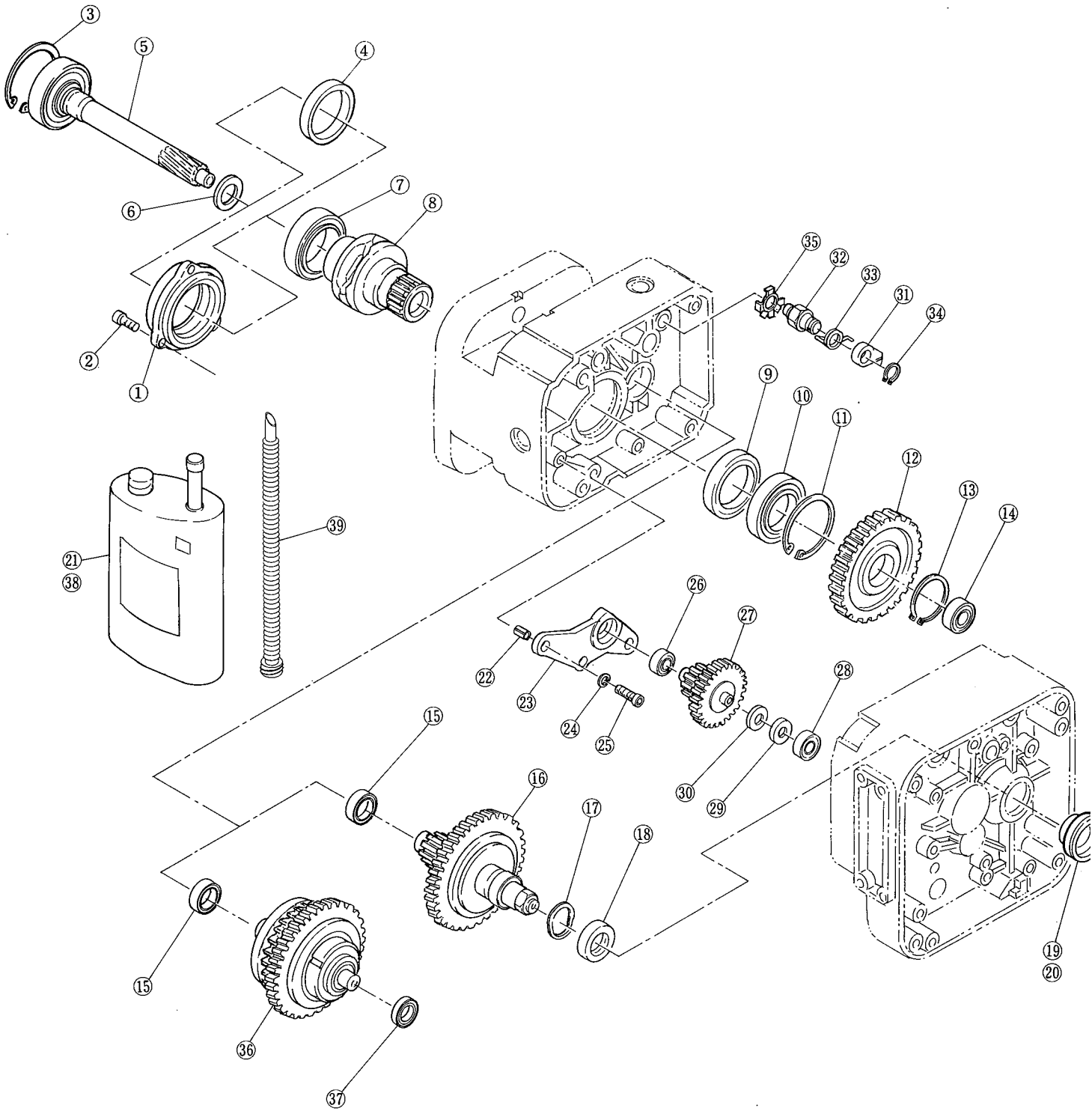


Fig No.	Part No.	Part Name	No. per Hoist	Size B					
				Single speed			Dual speed		
				001H	003S	005L	001HD	003SD	005LD

GEARING PARTS

Friction clutch

12	240	Load gear	1						
16	1223	Friction clutch complete set	1						
17	234	Wavy washer	1						
18	233	Oil seal	1						
19	235	Friction plug	1						
20	840	Name plate FP	1						
21	1855	Gear oil F	1						
22	270	Set pin S	2						
23	261	Gear plate	1						
24	272	Spring lock washer	3						
25	271	Socket bolt	3						
26	265	Needle bearing	1						
27	5262	Gear B assembly	1						
28	267	Needle bearing	1						
29	268	Thrust needle bearing	1						
30	269	Thrust plate	1						
39	903	Pot nozzle	1						

Mechanical brake with friction clutch(option)

12	240	Load gear	1						
22	270	Set pin S	2						
23	261	Gear plate	1						
24	272	Spring lock washer	3						
25	271	Socket bolt	3						
26	265	Needle bearing	1						
27	5262	Gear B assembly	1						
28	267	Needle bearing	1						
29	268	Thrust needle bearing	1						
30	269	Thrust plate	1						
31	288	Pawl	1						
32	289	Pawl shaft	1						
33	290	Pawl spring	1						
34	292	Snap ring	1						
35	294	Pawl shaft washer	1						
36	1274	Mechanical brake with friction clutch complete set	1						
37	239	Ball bearing	1						
38	1856	Gear oil M	1						
39	903	Pot nozzle	1						

Common

3	166	Snap ring	1						
4	111	Collar B	1						
5	5220	Pinion assembly	1						
6	221	Oil seal	1						
7	242	Ball bearing	1						
8	241	Load sheave	1						
9	244	Oil seal	1						
10	243	Ball bearing	1						
11	207	Snap ring	1						
13	245	Snap ring	1						
14	222	Ball bearing	1						
15	238	Ball bearing	1						

Note: #8, 241, load sheave is supplied as a kit with chain guide A/AL and chain guide B.

B : Gearing Parts

Fig No.	Part No.	Part Name	No. per Hoist	Size C						
				Single speed				Dual speed		
				003H	005S	010L	010M	003HD	005SD	010LD
GEARING PARTS										
Friction clutch										
16	1223	Friction clutch complete set	1							
17	234	Wavy washer	1							
18	233	Oil seal	1							
19	235	Friction plug	1							
20	840	Name plate FP	1							
21	1855	Gear oil F	1							
39	903	Pot nozzle	1							
Mechanical brake with friction clutch (option)										
31	288	Pawl	1				-----			
32	289	Pawl shaft	1				-----			
33	290	Pawl spring	1				-----			
34	292	Snap ring	1				-----			
35	294	Pawl shaft washer	1				-----			
36	1274	Mechanical brake with friction clutch complete set	1				-----			
37	239	Ball bearing	1				-----			
38	1856	Gear oil M	1				-----			
39	903	Pot nozzle	1				-----			
Common										
1	110	Bearing holder	1							
2	164	Socket bolt	3							
3	166	Snap ring	1							
5	5220	Pinion assembly	1							
6	221	Oil seal	1							
7	242	Ball bearing	1							
8	241	Load sheave	1							
9	244	Oil seal	1							
10	243	Ball bearing	1							
11	207	Snap ring	1							
12	241	Load gear	1							
13	245	Snap ring	1							
14	222	Ball bearing	1							
15	238	Ball bearing	1							
22	270	Set pin S	2		-----		-----			
23	261	Gear plate	1		-----		-----			
24	272	Spring lock washer	3		-----		-----			
25	271	Socket bolt	3		-----		-----			
26	264	Ball bearing	1		-----		-----			
27	5262	Gear B assembly	1		-----		-----			
28	264	Ball bearing	1		-----		-----			

B Gearing Parts

Fig No.	Part No.	Part Name	No. per Hoist	Size D								
				Single speed					Dual speed			
				010S	015S	020L	020M	030C	010SD	015SD	020LD	

GEARING PARTS

Friction clutch

16	1223	Friction clutch complete set	1									
17	234	Wavy washer	1									
18	233	Oil seal	1									
19	235	Friction plug	1									
20	840	Name plate FP	1									
21	1855	Gear oil F	1									
39	903	Pot nozzle	1									

Mechanical brake with friction clutch (option)

31	288	Pawl	1									
32	289	Pawl shaft	1									
33	290	Pawl spring	1									
34	292	Snap ring	1									
35	294	Pawl shaft washer	1									
36	1274	Mechanical brake with friction clutch complete set	1									
37	222	Ball bearing	1									
38	1856	Gear oil M	1									
39	903	Pot nozzle	1									

Common

1	110	Bearing holder	1									
2	164	Socket bolt	3									
3	166	Snap ring	1									
5	5220	Pinion assembly	1									
6	221	Oil seal	1									
7	242	Ball bearing	1									
8	241	Load sheave	1									
9	244	Oil seal	1									
10	243	Ball bearing	1									
11	207	Snap ring	1									
12	240	Load gear	1									
13	245	Snap ring	1									
14	222	Ball bearing	1									
15	238	Ball bearing	1									
22	270	Set pin S	2									
23	261	Gear plate	1									
24	272	Spring lock washer	3									
25	271	Socket bolt	3									
26	264	Ball bearing	1									
27	5262	Gear B assembly	1									
28	264	Ball bearing	1									

B : Gearing Parts

C HOOK PARTS

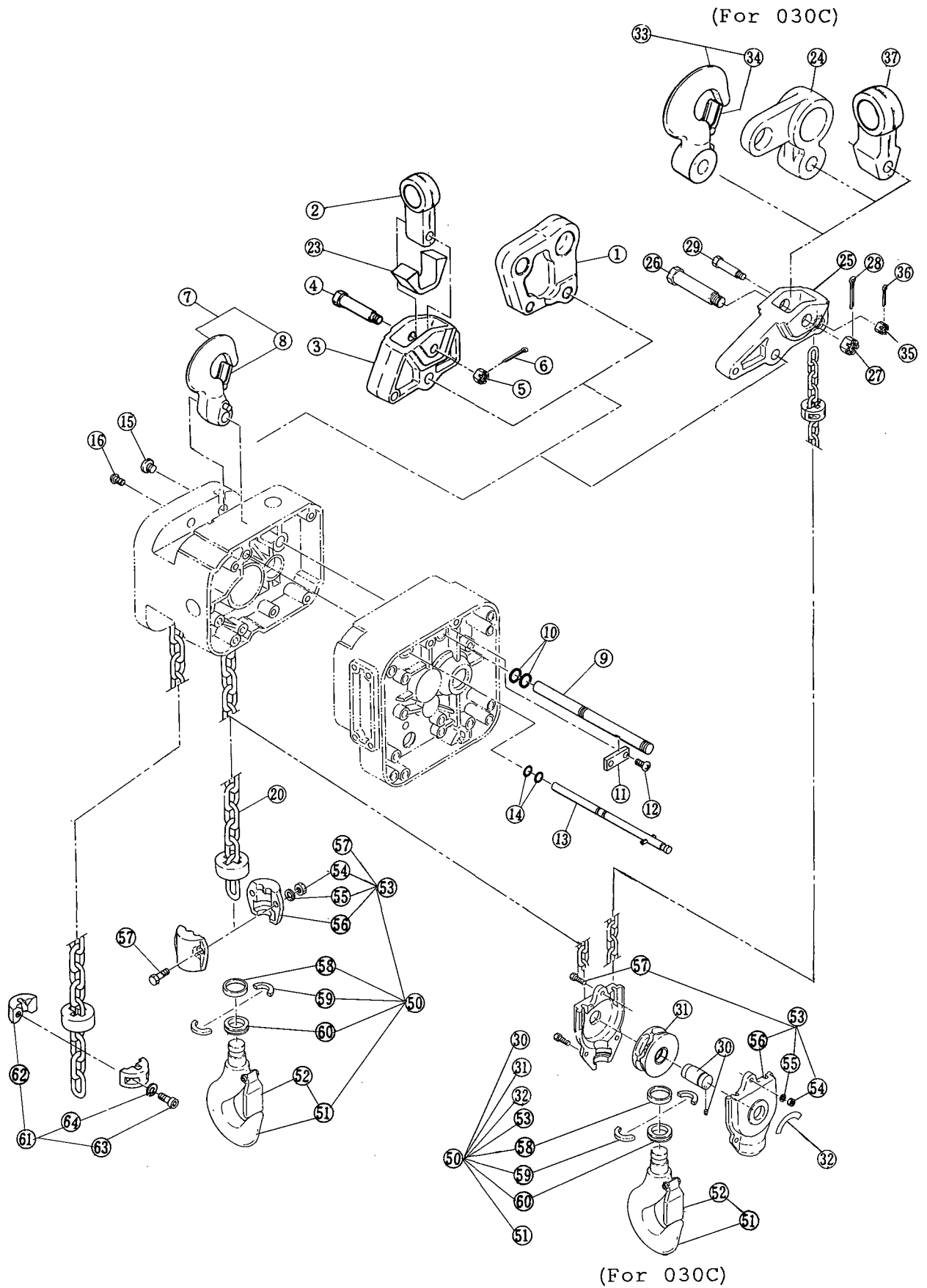


Fig No.	Part No.	Part Name	No. per Hoist	Size B					
				Single speed			Dual speed		
				001H	003S	005L	001HD	003SD	005LD

HOOK PARTS

Low head

1	31	Suspender T	1						
---	----	-------------	---	--	--	--	--	--	--

Suspension

2	001	Suspender G for motorized trolley	1						
3	29	Connection yoke	1						
4	32	Yoke bolt	1						
5	33	Slotted nut	1						
6	34	Split pin	1						
23	28	Connection yoke rubber	1						

Hook suspension

7	1001	Top hook assembly	1						
8	1002	Hook latch assembly	1						

Common

9	121	Connection shaft	1						
10	126	O ring	2						
11	123	Plate A	1						
12	124	Machine screw with spring washer	2						
13	1122	Fixing shaft assembly	1						
14	127	O ring	2						
15	128	Shaft plug	1						
16	130	Pan head machine screw	1						
20	873	Load chain(carburized)	1						
	874	Load chain(nickel plated)	1						
	875	Load chain(nickel defusion)	1						
50	1011	Bottom hook complete set	1						
51	2011	Bottom hook assembly	1						
52	1002	Hook latch assembly	1						
53	2015	Bottom yoke assembly	1						
54	017	Nut	2						
55	018	Spring lock washer	2						
56	015	Bottom yoke	2						
57	016	Bolt	2						
58	013	Thrust collar A	1						
59	014	Hook stopper	2						
60	012	Thrust bearing	1						
61	1045	Stopper assembly	1						
62	041	Stopper	2						
63	042	Socket Bolt	2						
64	043	Spring lock washer	2						

C: Hook Parts

Note: For Suspender G to manual trolley, refer to their part list.

Fig No.	Part No.	Part Name	No. per Hoist	Size C					
				Single speed			Dual speed		
				003H	005S	010L	010M	003HD	005SD

HOOK PARTS

Low head

1	31	Suspender T	1						
---	----	-------------	---	--	--	--	--	--	--

Suspension

2	001	Suspender G for motorized trolley	1						
3	029	Connection yoke	1						
4	032	Yoke bolt	1						
5	033	Slotted nut	1						
6	034	Split pin	1						
23	028	Connection yoke rubber	1						

Hook suspension

7	1001	Top hook assembly	1						
8	1002	Hook latch assembly	1						

Common

9	121	Connection shaft	1						
10	126	O ring	2						
11	123	Plate A	1						
12	124	Machine screw with spring washer	2						
13	1122	Fixing shaft assembly	1						
14	127	O ring	2						
15	128	Shaft plug	1						
16	130	Pan head machine screw	1						
20	873	Load chain(carburized)	1						
	874	Load chain(nickel plated)	1						
	875	Load chain(nickel defusion)	1						
50	1011	Bottom hook complete set	1						
51	2011	Bottom hook assembly	1						
52	1002	Hook latch assembly	1						
53	2015	Bottom yoke assembly	1						
54	017	Nut	2						
55	018	Spring lock washer	2						
56	015	Bottom yoke	2						
57	016	Bolt	2						
58	013	Thrust collar A	1						
59	014	Hook stopper	2						
60	012	Thrust bearing	1						
61	1045	Stopper assembly	1						
62	041	Stopper	2						
63	042	Socket Bolt	2						
64	043	Spring lock washer	2						

C: Hook Parts

Note: For Suspender G to manual trolley, refer to their part list.

Fig No.	Part No.	Part Name	No. per Hoist	Size D								
				Single speed					Dual speed			
				010S	015S	020L	020M	030C	010SD	015SD	020LD	

HOOK PARTS

Low head

1	031	Suspender T	1								
24	031	Suspender T	1								
25	030	Connection yoke D	1								
26	032	Yoke bolt	1								
27	033	Slotted nut	1								
28	034	Split pin	1								
29	035	Chain pin	1								
35	036	Slotted nut	1								
36	037	Split pin	1								

Suspension

2	001	Suspender G for motorized trolley	1								
3	029	Connection yoke	1								
4	032	Yoke bolt	1								
5	033	Slotted nut	1								
6	034	Split pin	1								
23	028	Connection yoke rubber	1								
37	001	Suspender G for motorized trolley	1								
25	030	Connection yoke D	1								
26	032	Yoke bolt	1								
27	033	Slotted nut	1								
28	034	Split pin	1								
29	035	Chain pin	1								
35	036	Slotted nut	1								
36	037	Split pin	1								

Hook suspension

7	1001	Top hook assembly	1								
8	1002	Hook latch assembly	1								
25	030	Connection yoke D	1								
26	032	Yoke bolt	1								
27	033	Slotted nut	1								
28	034	Split pin	1								
33	1001	Top hook assembly	1								
34	002	Hook latch assembly	1								
29	035	Chain pin	1								
35	036	Slotted nut	1								
36	037	Split pin	1								

Common

9	121	Connection shaft	1								
10	126	O ring	2								
11	123	Plate A	1								
12	124	Machine screw with spring washer	2								
13	1122	Fixing shaft assembly	1								
14	127	O ring	2								
15	128	Shaft plug	1								
16	130	Pan head machine screw	1								
20	873	Load chain(carburized)	1								
	874	Load chain(nickel plated)	1								
	875	Load chain(nickel defusion)	1								
50	1011	Bottom hook complete set	1								
30	6023	Bottom shaft assembly	1								
31	6021	Idle sheave assembly	1								
32	822	Name plate C	1								
51	2011	Bottom hook assembly	1								
52	1002	Hook latch assembly	1								
53	2015	Bottom yoke assembly	1								
54	017	Nut	2								
	017	Nut	3								
55	018	Spring lock washer	2								
	018	Spring lock washer	3								
56	015	Bottom yoke	2								
57	016	Bolt	2								
	016	Bolt	3								
58	013	Thrust collar A	1								
59	014	Hook stopper	2								
60	012	Thrust bearing	1								
61	1045	Stopper assembly	1								
	1045	Stopper assembly	2								
62	041	Stopper	2								
	041	Stopper	4								
63	042	Socket Bolt	2								
	042	Socket Bolt	4								
64	043	Spring lock washer	2								
	043	Spring lock washer	4								

C : Hook Parts

Note: For Suspender G to manual trolley, refer to their part list.

D CHAINING PARTS

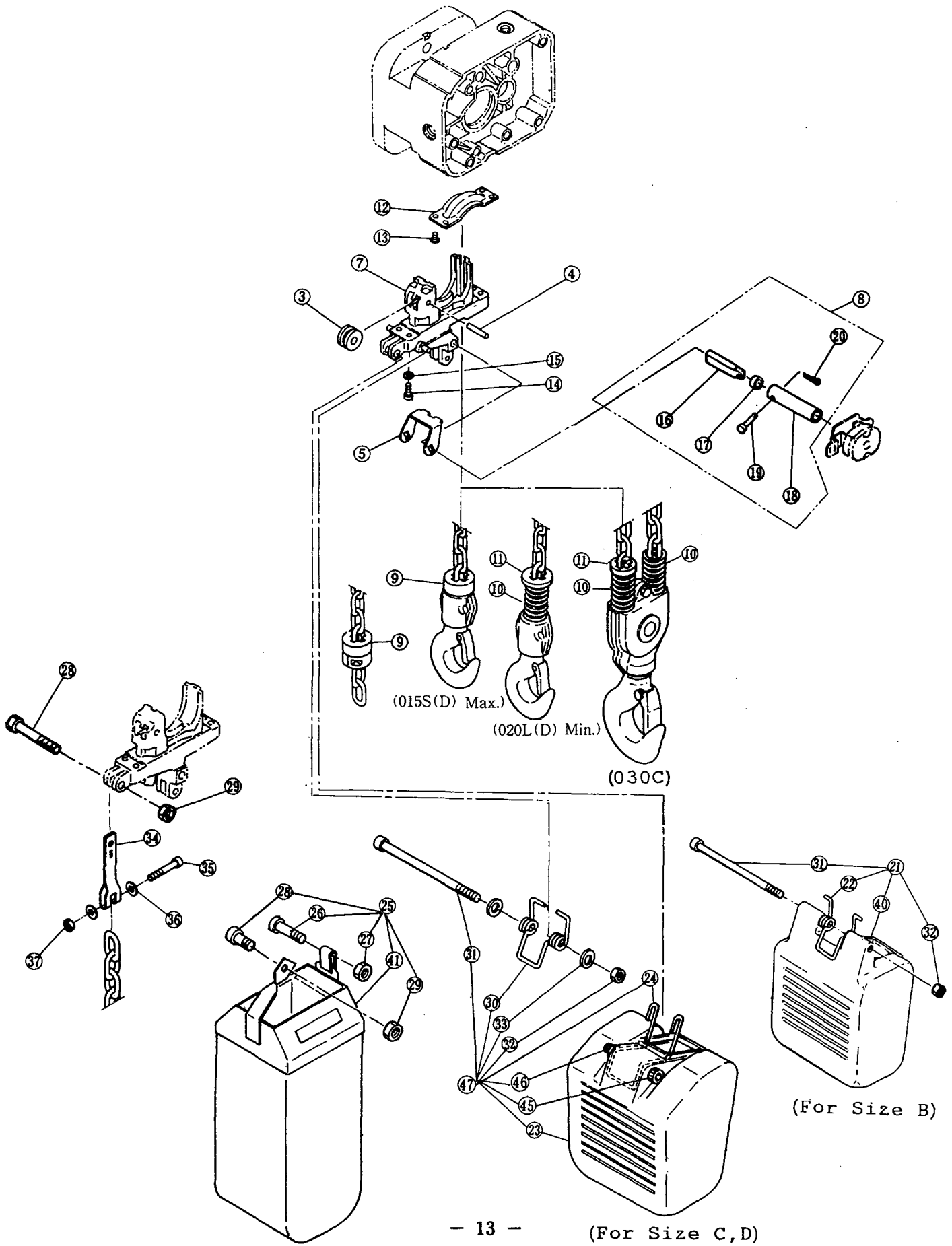


Fig No.	Part No.	Part Name	No. per Hoist	Size B					
				Single speed			Dual speed		
				001H	003S	005L	001HD	003SD	005LD

CHAINING PARTS

Upper limit switch

5	337	Limit lever S	1						
7	331	Chain guide A	1						
9	053	Cushion rubber	2						
8	1338	Limit lever pin assembly	1						
16	338	Limit lever pin	1						
17	340	Limit lever collar	1						
18	339	Limit lever coupling	1						
19	341	Coupling pin	1						
20	342	Split pin	1						
21	1401	Chain container P assembly (L.H. \leq 6m)	1						
	1401	Chain container P assembly (L.H. \leq 4m)	1						
40	401	Chain container P (L.H. \leq 6m)	1						
	401	Chain container P (L.H. \leq 4m)	1						
22	416	Chain container spring	1						
31	421	Socket bolt	1						
32	422	Lever nut	1						
25	5403	Chain container complete set (L.H. \leq 12m)	1						
	5403	Chain container complete set (L.H. \leq 8m)	1						
41	6403	Chain container assembly (L.H. \leq 12m)	1						
	6403	Chain container assembly (L.H. \leq 8m)	1						
26	419	Socket bolt	1						
27	420	U nut	1						
28	417	Socket bolt	1						
29	418	Lever nut	1						

Common

12	332	Chain guide B	1						
14	346	Socket bolt	4						
15	347	Spring lock washer	4						
34	408	Chain end suspender	1						
35	396	Socket bolt	1						
36	399	Washer	2						
37	398	U nut	1						

Note: L.H.(Load-lifting Height)

#12, 332, chain guide B is supplied as a kit with chain guide A and load sheave.

D : Chaining Parts

Fig No.	Part No.	Part Name	No. per Hoist	Size C					
				Single speed				Dual speed	
				003H	005S	010L	010M	003HD	005SD

CHAINING PARTS

Upper limit switch

7	331	Chain guide A	1						
5	337	Limit lever S	1						
9	053	Cushion rubber	2						
8	1338	Limit lever pin assembly	1						
16	338	Limit lever pin	1						
17	340	Limit lever collar	1						
18	339	Limit lever coupling	1						
19	341	Coupling pin	1						
20	342	Split pin	1						
47	1401	Chain container P assembly (L.H. ≤ 6m)	1						
	1401	Chain container P assembly (L.H. ≤ 4m)	1						
23	401	Chain container P (L.H. ≤ 6m)	1						
	401	Chain container P (L.H. ≤ 4m)	1						
30	416	Chain container spring	1						
31	429	Socket bolt	1						
32	430	Lever nut	1						
33	440	Plain washer	2						
24	428	Chain container suspender	1						
45	429	Socket bolt	1						
46	430	Lever nut	1						
25	5404	Chain container complete set (L.H. ≤ 15m)	1						
	5404	Chain container complete set (L.H. ≤ 8m)	1						
41	6404	Chain container assembly (L.H. ≤ 15m)	1						
	6404	Chain container assembly (L.H. ≤ 8m)	1						
26	419	Socket bolt	1						
27	420	U nut	1						
28	417	Socket bolt	1						
29	418	Lever nut	1						

Common

3	333	Guide roller	1						
4	334	Roller pin	1						
12	332	Chain guide B	1						
13	348	Machine screw with spring washer	4						
14	346	Socket bolt	4						
15	347	Spring lock washer	4						
34	408	Chain end suspender	1						
35	396	Socket bolt	1						
37	397	Lever nut	1						

Note: L.H. (Load-lifting Height)

D : Chaining Parts

Fig No.	Part No.	Part Name	No. per Hoist	Size D					
				Single speed			Dual speed		
				010S	015S	020L	020M	030C	010SD

CHAINING PARTS

Upper limit switch

7	331	Chain guide A	1							
5	337	Limit lever S	1							
9	053	Cushion rubber	1							
	053	Cushion rubber	2							
10	051	Chain spring	1							
	051	Chain spring	2							
11	054	Limit lever striker	1							
8	1338	Limit lever pin assembly	1							
16	338	Limit lever pin	1							
17	340	Limit lever collar	1							
18	339	Limit lever coupling	1							
19	341	Coupling pin	1							
20	342	Split pin	1							
47	1401	Chain container P assembly (L.H. ≤ 6m)	1							
	1401	Chain container P assembly (L.H. ≤ 4m)	1							
23	401	Chain container P (L.H. ≤ 6m)	1							
	401	Chain container P (L.H. ≤ 4m)	1							
30	416	Chain container spring	1							
31	429	Socket bolt	1							
32	430	Lever nut	1							
33	440	Plain washer	2							
24	428	Chain container suspender	1							
45	429	Socket bolt	1							
46	430	Lever nut	1							
25	5405	Chain container complete set (L.H. ≤ 15m)	1							
	5405	Chain container complete set (L.H. ≤ 12m)	1							
	5405	Chain container complete set (L.H. ≤ 6m)	1							
41	6405	Chain container assembly (L.H. ≤ 15m)	1							
	6405	Chain container assembly (L.H. ≤ 12m)	1							
	6405	Chain container assembly (L.H. ≤ 6m)	1							
26	419	Socket bolt	1							
27	420	U nut	1							
28	417	Socket bolt	1							
29	418	Lever nut	1							

Common

3	333	Guide roller	1							
4	334	Roller pin	1							
12	332	Chain guide B	1							
13	124	Machine screw with spring washer	4							
14	346	Socket bolt	4							
15	347	Spring lock washer	4							
34	408	Chain end suspender	1							
35	396	Socket bolt	1							
37	397	Lever nut	1							

Note: L.H.(Load-lifting Height)

D : Chaining Parts

E ELECTRIC PARTS

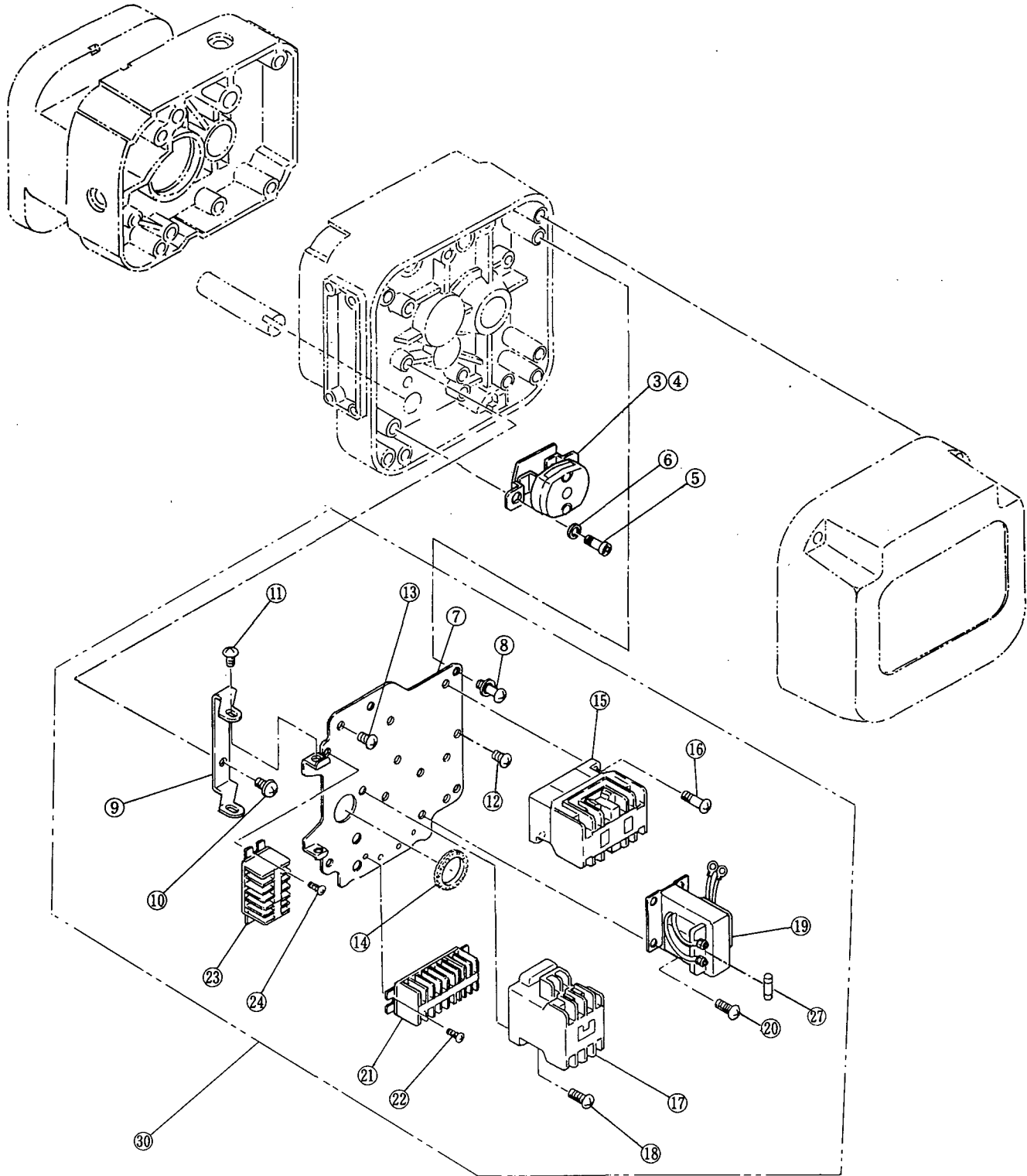


Fig No.	Part No.	Part Name	No. per Hoist	Size B					
				Single speed			Dual speed		
				001H	003S	005L	001HD	003SD	005LD
ELECTRIC PARTS									
Upper limit switch									
3	1551	Limit switch assembly	1						
Common									
5	353	Socket bolt	3						
6	043	Spring lock washer	3						
30	1441V	Plate assembly (220/440V)	1						
	1441K	Plate assembly (575V)	1						
7	451	Plate (220/440V)	1						
	441	Plate (575V)	1						
8	445	Plate screw	3						
9	442	Hinge	1						
10	446	Machine screw with spring washer	2						
11	443	Pan head machine screw	2						
12	616	Machine screw with spring washer	1						
13	619	Machine screw with spring washer and plain washer	1						
14	448V	Bushing (220/440V)	1						
	448K	Bushing (575V)	1						
15	578	Electromagnetic contactor for lifting/lowering	1						
16	612	Machine screw with spring washer	2						
17	579	Electromagnetic contactor for high/low speed	1						
18	613	Machine screw with spring washer and plain washer	2						
19	577V	Transformer (220/440V)	1						
	577K	Transformer (575V)	1						
20	611	Machine screw with spring washer	4						
21	591V	Terminal plate 9P (220/440V)	1						
	591K	Terminal plate 9P (575V)	1						
22	610	Machine screw with spring washer and plain washer (220/440V)	2						
23	592V	Terminal plate 6P (220/440V)	1						
	592K	Terminal plate 6P (575V)	1						
24	609	Machine screw with spring washer and plain washer (220/440V)	2						
27	602	Fuse	1						

E: Electric Parts

Fig No.	Part No.	Part Name	No. per Hoist	Size C					
				Single speed				Dual speed	
				003H	005S	010L	010M	003HD	005SD
ELECTRIC PARTS									
Upper limit switch									
3	1551	Limit switch assembly	1						
Common									
5	353	Socket bolt	3						
6	043	Spring lock washer	3						
30	1441V	Plate assembly (220/440V)	1						
	1441K	Plate assembly (575V)	1						
7	451	Plate (220/440V)	1						
	441	Plate (575V)	1						
8	445	Plate screw	3						
9	442	Hinge	1						
10	446	Machine screw with spring washer	2						
11	443	Pan head machine screw	2						
12	616	Machine screw with spring washer	1						
13	619	Machine screw with spring washer and plain washer	1						
14	448V	Bushing (220/440V)	1						
	448K	Bushing (575V)	1						
15	578	Electromagnetic contactor for lifting/lowering	1						
16	612	Machine screw with spring washer	2						
17	579	Electromagnetic contactor for high/low speed	1						
18	613	Machine screw with spring washer and plain washer	2						
19	577V	Transformer (220/440V)	1						
	577K	Transformer (575V)	1						
20	611	Machine screw with spring washer	4						
21	591V	Terminal plate 9P (220/440V)	1						
	591K	Terminal plate 9P (575V)	1						
22	610	Machine screw with spring washer and plain washer (220/440V)	2						
23	592V	Terminal plate 6P (220/440V)	1						
	592K	Terminal plate 6P (575V)	1						
24	609	Machine screw with spring washer and plain washer (220/440V)	2						
27	602	Fuse	1						

E: Electric Parts

Fig No.	Part No.	Part Name	No. per Hoist	Size D					
				Single speed			Dual speed		
				010S	015S	020L	020M	030C	010SD
ELECTRIC PARTS									
Upper limit switch									
3	1551	Limit switch assembly	1						
Common									
5	353	Socket bolt	3						
6	043	Spring lock washer	3						
30	1441V	Plate assembly (220/440V)	1						
	1441K	Plate assembly (575V)	1						
7	451	Plate (220/440V)	1						
	441	Plate (575V)	1						
8	445	Plate screw	3						
9	442	Hinge	1						
10	446	Machine screw with spring washer	2						
11	443	Pan head machine screw	2						
12	616	Machine screw with spring washer	1						
13	619	Machine screw with spring washer and plain washer	1						
14	448V	Bushing (220/440V)	1						
	448K	Bushing (575V)	1						
15	578	Electromagnetic contactor for lifting/lowering	1						
16	612	Machine screw with spring washer	2						
17	579	Electromagnetic contactor for high/low speed	1						
18	613	Machine screw with spring washer and plain washer	2						
19	577V	Transformer (220/440V)	1						
	577K	Transformer (575V)	1						
20	611	Machine screw with spring washer	4						
21	591V	Terminal plate 9P (220/440V)	1						
	591K	Terminal plate 9P (575V)	1						
22	610	Machine screw with spring washer and plain washer (220/440V)	2						
23	592V	Terminal plate 6P (220/440V)	1						
	592K	Terminal plate 6P (575V)	1						
24	609	Machine screw with spring washer and plain washer (220/440V)	2						
27	602	Fuse	1						

E: Electric Parts

F CONTROL STATION PARTS (Direct Wiring)

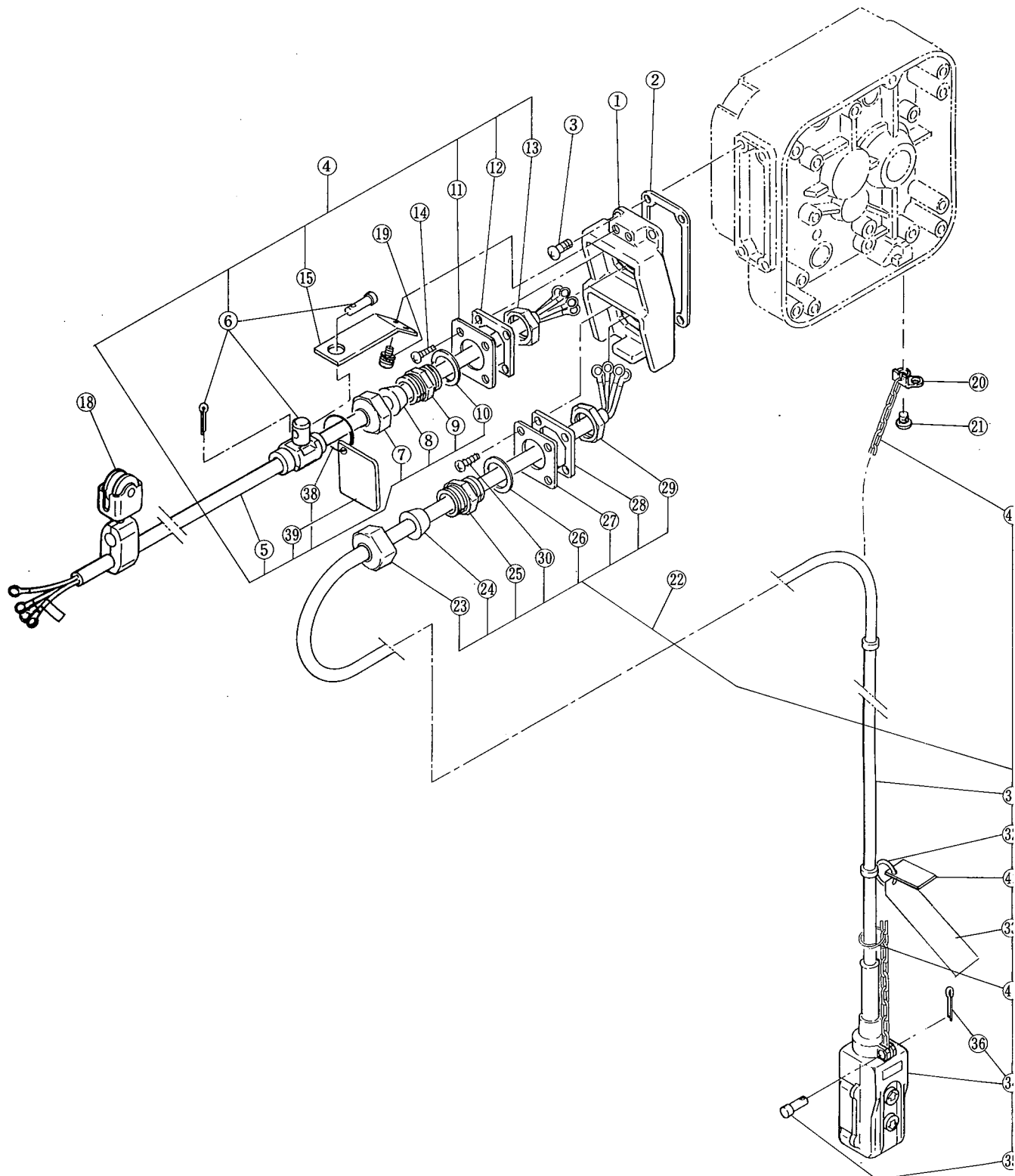


Fig No.	Part No.	Part Name	No. per Hoist	Size B					
				Single speed			Dual speed		
				001H	003S	005L	001HD	003SD	005LD

CONTROL STATION PARTS

Direct wiring terminal cover

1	513	Terminal cover	1						
2	512	Terminal cover packing	1						
3	516	Machine screw with spring washer	4						
14	517	Tapping machine screw	4						
19	435	Machine screw with spring washer	2						

Power supply cable

4	1521V	Power supply cable 4C complete set (220/440V)	1						
	1521K	Power supply cable 4C complete set (575V)	1						
5	521V	Power supply cable 4C (220/440V)	1						
	521K	Power supply cable 4C (575V)	1						
6	1542	Cable support assembly	1						
	544	Cable support pin B	1						
	545	Split pin							
7	569	Holder A	1						
8	574	Cable packing	1						
9	570	Holder B	1						
10	571	Packing	1						
11	515	Holder plate	1						
12	514	Plate packing	1						
13	572	Holder nut	1						
15	541	Cable support arm	1						
18	1641	Cable hanger 14 assembly	3						
20	535	Cord support wire stopper	1						
21	124	Machine screw with spring washer	2						
38	636	Cable ring	1						
39	912V	Tag F (220/440V)	1						
	912K	Tag F (575V)	1						

Push button cord(without emergency stop)

22	1557	Push button cord 3C assembly	1						
	1558	Push button cord 4C assembly	1						
23	569	Holder A	1						
24	574	Cable packing	1						
25	570	Holder B	1						
26	571	Packing	1						
27	515	Holder plate	1						
28	514	Plate packing	1						
29	572	Holder nut	1						
30	517	Tapping machine screw	4						
31	557	Push button cord 4C	1						
32	566	Tag holder	1						
33	565	Warning tag K	1						
34	1561	2 push button switch S assembly	1						
	1562	2 push button switch D assembly	1						
35	544	Cord support pin B	1						
36	545	Split pin	1						
40	631	Cord chain	1						
41	636	Cord ring	1						
42	913	Tag S	1						

F: Control Station Parts (Direct Wiring)

Fig No.	Part No.	Part Name	No. per Hoist	Size C					
				Single speed			Dual speed		
				003H	005S	010L	010M	003HD	005SD
CONTROL STATION PARTS									
Direct wiring terminal cover									
1	513	Terminal cover	1						
2	512	Terminal cover packing	1						
3	516	Machine screw with spring washer	4						
14	517	Tapping machine screw	4						
19	435	Machine screw with spring washer	2						
Power supply cable									
4	1521V	Power supply cable 4C complete set (220/440V)	1						
	1521K	Power supply cable 4C complete set (575V)	1						
5	521V	Power supply cable 4C (220/440V)	1						
	521K	Power supply cable 4C (575V)	1						
6	1542	Cable support assembly	1						
	544	Cable support pin B	1						
	545	Split pin	1						
7	569	Holder A	1						
8	574	Cable packing	1						
9	570	Holder B	1						
10	571	Packing	1						
11	515	Holder plate	1						
12	514	Plate packing	1						
13	572	Holder nut	1						
15	541	Cable support arm	1						
18	1641	Cable hanger 14 assembly	3						
20	535	Cord support wire stopper	1						
21	124	Machine screw with spring washer	2						
38	636	Cable ring	1						
39	912V	Tag F (220/440V)	1						
	912K	Tag F (575V)	1						
Push button cord(without emergency stop)									
22	1557	Push button cord 3C assembly	1						
	1558	Push button cord 4C assembly	1						
23	569	Holder A	1						
24	574	Cable packing	1						
25	570	Holder B	1						
26	571	Packing	1						
27	515	Holder plate	1						
28	514	Plate packing	1						
29	572	Holder nut	1						
30	517	Tapping machine screw	4						
31	557	Push button cord 4C	1						
32	566	Tag holder	1						
33	565	Warning tag K	1						
34	1561	2 push button switch S assembly	1						
	1562	2 push button switch D assembly	1						
35	544	Cord support pin B	1						
36	545	Split pin	1						
40	631	Cord chain	1						
41	636	Cord ring	1						
42	913	Tag S	1						

F: Control Station Parts (Direct Wiring)

Fig No.	Part No.	Part Name	No. per Hoist	Size D								
				Single speed					Dual speed			
				010S	015S	020L	020M	030C	010SD	015SD	020LD	
CONTROL STATION PARTS												
Direct wiring terminal cover												
1	513	Terminal cover	1									
2	512	Terminal cover packing	1									
3	516	Machine screw with spring washer	4									
14	517	Tapping machine screw	4									
19	546	Machine screw with spring washer	2									
Power supply cable												
4	1521V	Power supply cable 4C complete set (220/440V)	1									
	1521K	Power supply cable 4C complete set (575V)	1									
5	521V	Power supply cable 4C (220/440V)	1									
	521K	Power supply cable 4C (575V)	1									
6	1542	Cable support assembly	1									
	544	Cable support pin B	1									
	545	Split pin										
7	569	Holder A	1									
8	574	Cable packing	1									
9	570	Holder B	1									
10	571	Packing	1									
11	515	Holder plate	1									
12	514	Plate packing	1									
13	572	Holder nut	1									
15	541	Cable support arm	1									
18	1641	Cable hanger 14 assembly	3									
20	535	Cord support wire stopper	1									
21	124	Machine screw with spring washer	2									
38	636	Cable ring	1									
39	912V	Tag F (220/440V)	1									
	912K	Tag F (575V)	1									
Push button cord(without emergency stop)												
22	1557	Push button cord 3C assembly	1									
	1558	Push button cord 4C assembly	1									
23	569	Holder A	1									
24	574	Cable packing	1									
25	570	Holder B	1									
26	571	Packing	1									
27	515	Holder plate	1									
28	514	Plate packing	1									
29	572	Holder nut	1									
30	517	Tapping machine screw	4									
31	557	Push button cord 4C	1									
32	566	Tag holder	1									
33	565	Warning tag K	1									
34	1561	2 push button switch S assembly	1									
	1562	2 push button switch D assembly	1									
35	544	Cord support pin B	1									
36	545	Split pin	1									
40	631	Cord chain	1									
41	636	Cord ring	1									
42	913	Tag S	1									

F: Control Station Parts (Direct Wiring)

BODY SIZE E PARTS

A HOUSING AND MOTOR PARTS

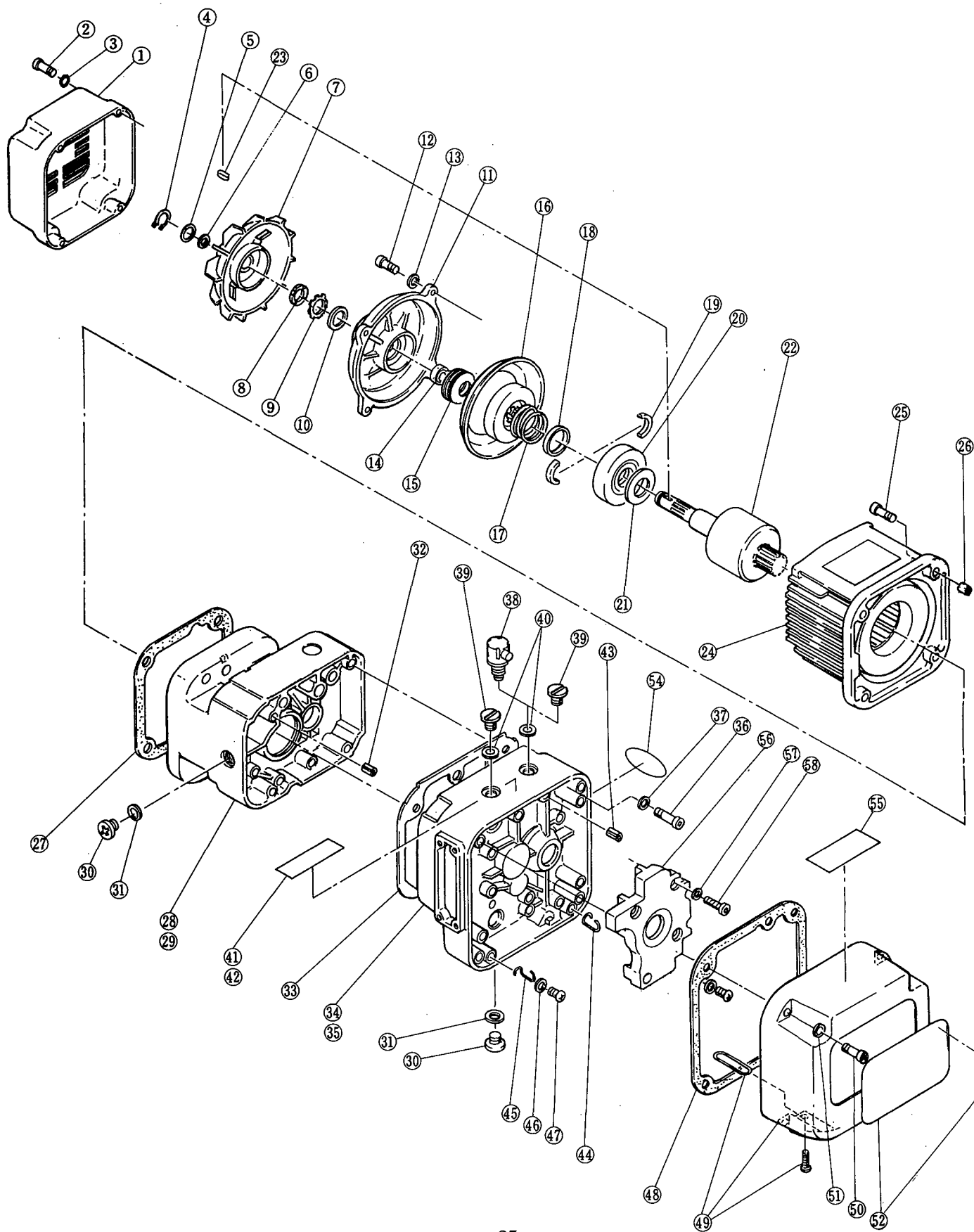


Fig No.	Part No.	Part name	No. per Hoist	Single speed				
				020S	025S	030L	030S	050L

HOUSING AND MOTOR PARTS

Friction clutch

28	101	Body B	1					
35	103	Gear case F	1					
39	135	Oil plug B	1					
41	810	Name plate OF	1					

Mechanical brake with friction clutch (Option)

29	99	Body C	1					
34	102	Gear case M	1					
38	1175	Oil cap assembly	1					
42	811	Name plate OM	1					

Common

1	107	Fan cover	1					
2	160	Socket bolt	4					
3	161	Toothed lock washer	4					
4	323	Snap ring	1					
5	322	Fan washer	1					
6	321	O ring	1					
7	108	Fan	1					
8	314	Nut	1					
9	315	Lock washer	1					
10	313	Spacer	1					
11	2106	Motor cover assembly	1					
12	158	Socket bolt	4					
13	159	Spring lock washer	4					
14	312	Collar M	1					
15	311	Coned disc spring M	4					
16	5212	Brake drum assembly	1					
17	214	Brake spring	1					
18	318	Collar	1					
19	317	Thrust disc	2					
20	503	Pull rotor	1					
21	316	Coned disc spring	1					
22	5502	Motor shaft with rotor	1					
23	320	Key	1					
24	5501V	Motor frame with stator (220/440V)	1					
	5501K	Motor frame with stator (575V)	1					
25	155	Socket bolt	4					
26	138	Set pin S	2					
27	118	Packing M	1					
30	133	Oil plug	2					
31	136	Plug packing	2					
32	137	Set pin S	2					
33	116	Packing G	1					
36	151	Socket bolt	5					
37	152	Toothed lock washer	5					
39	135	Oil plug B	1					
40	173	Eyebolt packing	1					
43	139	Spring Pin	1					
44	431	Cover suspender A	1					
45	432	Cover suspender B	1					
46	436	Washer	2					
47	435	Machine screw with spring washer	2					
48	117	Packing C	1					
49	1104	Controller cover assembly	1					
50	153	Socket bolt	4					
51	154	Toothed lock washer	4					
52	800V	Name plate B (Hook-ER 220/440V)	1					
	800K	Name plate B (Hook-ER 575V)	1					
	800SSV	Name plate B (Single standard-speed ERM for 220/440V)	1					
	800SSK	Name plate B (Single standard-speed ERM for 575V)	1					
	801	Name plate B (Blank)	1					
54	868L	Name plate AD(L)	1					
	868S	Name plate AD(S)	1					
55	935	Warning label EE	1					
56	109	Balancer	1					
57	163	Spring lock washer	3					
58	162	Socket bolt	3					

A: HOUSING AND MOTOR PARTS

Note: Part No. 801 is applied to all ERMs except for single-standard speed ERM.

Fig No.	Part No.	Part name	No. per Hoist	Dual speed				
				020SD	025SD	030LD	030SD	050LD

HOUSING AND MOTOR PARTS

Friction clutch

28	101	Body B	1					
35	103	Gear case F	1					
39	135	Oil plug B	1					
41	810	Name plate OF	1					

Mechanical brake with friction clutch (Option)

29	99	Body C	1					
34	102	Gear case M	1					
38	1175	Oil cap assembly	1					
42	811	Name plate OM	1					

Common

1	107	Fan cover	1					
2	160	Socket bolt	4					
3	161	Toothed lock washer	4					
4	323	Snap ring	1					
5	322	Fan washer	1					
6	321	O ring	1					
7	108	Fan	1					
8	314	Nut	1					
9	315	Lock washer	1					
10	313	Spacer	1					
11	2106	Motor cover assembly	1					
12	158	Socket bolt	4					
13	159	Spring lock washer	4					
14	312	Collar M	1					
15	311	Coned disc spring M	4					
16	5212	Brake drum assembly	1					
17	214	Brake spring	1					
18	318	Collar	1					
19	317	Thrust disc	2					
20	503	Pull rotor	1					
21	316	Coned disc spring	1					
22	5502	Motor shaft with rotor	1					
23	320	Key	1					
24	5501V	Motor frame with stator (220/440V)	1					
	5501K	Motor frame with stator (575V)	1					
25	155	Socket bolt	4					
26	138	Set pin S	2					
27	118	Packing M	1					
30	133	Oil Plug	2					
31	136	Plug packing	2					
32	137	Set pin S	2					
33	116	Packing G	1					
36	151	Socket bolt	5					
37	152	Toothed lock washer	5					
39	135	Oil plug B	1					
40	173	Eyebolt packing	1					
43	139	Spring Pin	1					
44	431	Cover suspender A	1					
45	432	Cover suspender B	1					
46	436	Washer	2					
47	435	Machine screw with spring washer	2					
48	117	Packing C	1					
49	1104	Controller cover assembly	1					
50	153	Socket bolt	4					
51	154	Toothed lock washer	4					
52	800V	Name plate B (Hook-ER 220/440V)	1	---	---	---	---	---
	800K	Name plate B (Hook-ER 575V)	1	---	---	---	---	---
	800SSV	Name plate B (Single standard-speed ERM for 220/440V)	1	---	---	---	---	---
	800SSK	Name plate B (Single standard-speed ERM for 575V)	1	---	---	---	---	---
	801	Name plate B (Blank)	1					
54	868L	Name plate AD(L)	1	---	---	---	---	---
	868S	Name plate AD(S)	1					
55	935	Warning label EE	1					
56	109	Balancer	1					
57	163	Spring lock washer	3					
58	162	Socket bolt	3					

A: HOUSING AND MOTOR PARTS

Note: Part No. 801 is applied to all ERMs except for single-standard speed ERM.

B GEARING PARTS

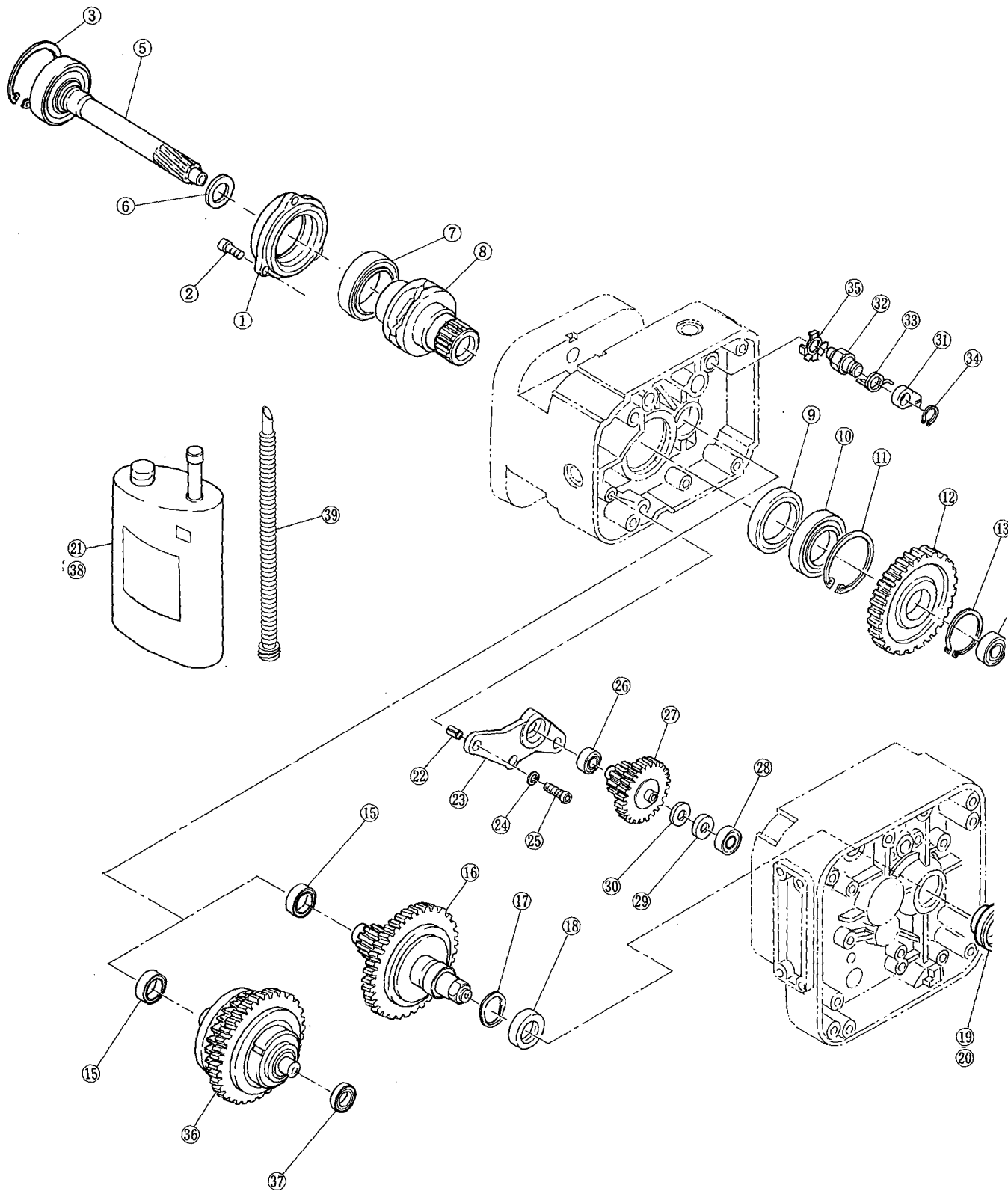


Fig No.	Part No.	Part name	No. per Hoist	Single speed				
				020S	025S	030L	030S	050L
GEARING PARTS								
Friction clutch								
16	1223	Friction clutch complete set	1					
17	234	Wavy washer	1					
18	233	Oil seal	1					
19	235	Friction plug	1					
20	840	Name plate FP	1					
21	1901	Gear oil F	3					
Mechanical brake with friction clutch (Option)								
31	288	Pawl	1					
32	289	Pawl shaft	1					
33	290	Pawl spring	1					
34	292	Snap ring	1					
35	294	Pawl shaft washer	1					
36	1274	Mechanical brake with friction clutch complete set	1					
37	239	Ball bearing	1					
38	1902	Gear oil M	3					
Common								
1	110	Bearing holder	1					
2	164	Socket bolt	3					
3	166	Snap ring	1					
5	5220	Pinion assembly	1					
6	221	Oil seal	1					
7	242	Ball bearing	1					
8	241	Load sheave	1					
9	244	Oil seal	1					
10	243	Ball bearing	1					
11	207	Snap ring	1					
12	240	Load gear	1					
13	245	Snap ring	1					
14	222	Ball bearing	1					
15	238	Ball bearing	1					
22	270	Set pin	2					
23	261	Gear plate	1					
24	272	Spring lock washer	3					
25	271	Socket bolt	3					
26	264	Ball bearing	1					
27	5262	Gear B assembly	1					
28	266	Ball bearing	1					
39	903	Pot nozzle	1					

B: GEARING PARTS

Fig No.	Part No.	Part name	No. per Hoist	Dual speed				
				020SD	025SD	030LD	030SD	050LD
GEARING PARTS								
Friction clutch								
16	1223	Friction clutch complete set	1					
17	234	Wavy washer	1					
18	233	Oil seal	1					
19	235	Friction plug	1					
20	840	Name plate FP	1					
21	1901	Gear oil F	3					
Mechanical brake with friction clutch (Option)								
31	288	Pawl	1					
32	289	Pawl shaft	1					
33	290	Pawl spring	1					
34	292	Snap ring	1					
35	294	Pawl shaft washer	1					
36	1274	Mechanical brake with friction clutch complete set	1					
37	239	Ball bearing	1					
38	1902	Gear oil M	3					
Common								
1	110	Bearing holder	1					
2	164	Socket bolt	3					
3	166	Snap ring	1					
5	5220	Pinion assembly	1					
6	221	Oil seal	1					
7	242	Ball bearing	1					
8	241	Load sheave	1					
9	244	Oil seal	1					
10	243	Ball bearing	1					
11	207	Snap ring	1					
12	240	Load gear	1					
13	245	Snap ring	1					
14	222	Ball bearing	1					
15	238	Ball bearing	1					
22	270	Set pin	2					
23	261	Gear plate	1					
24	272	Spring lock washer	3					
25	271	Socket bolt	3					
26	264	Ball bearing	1					
27	5262	Gear B assembly	1					
28	266	Ball bearing	1					
39	903	Pot nozzle	1					

B: GEARING PARTS

C HOOK PARTS

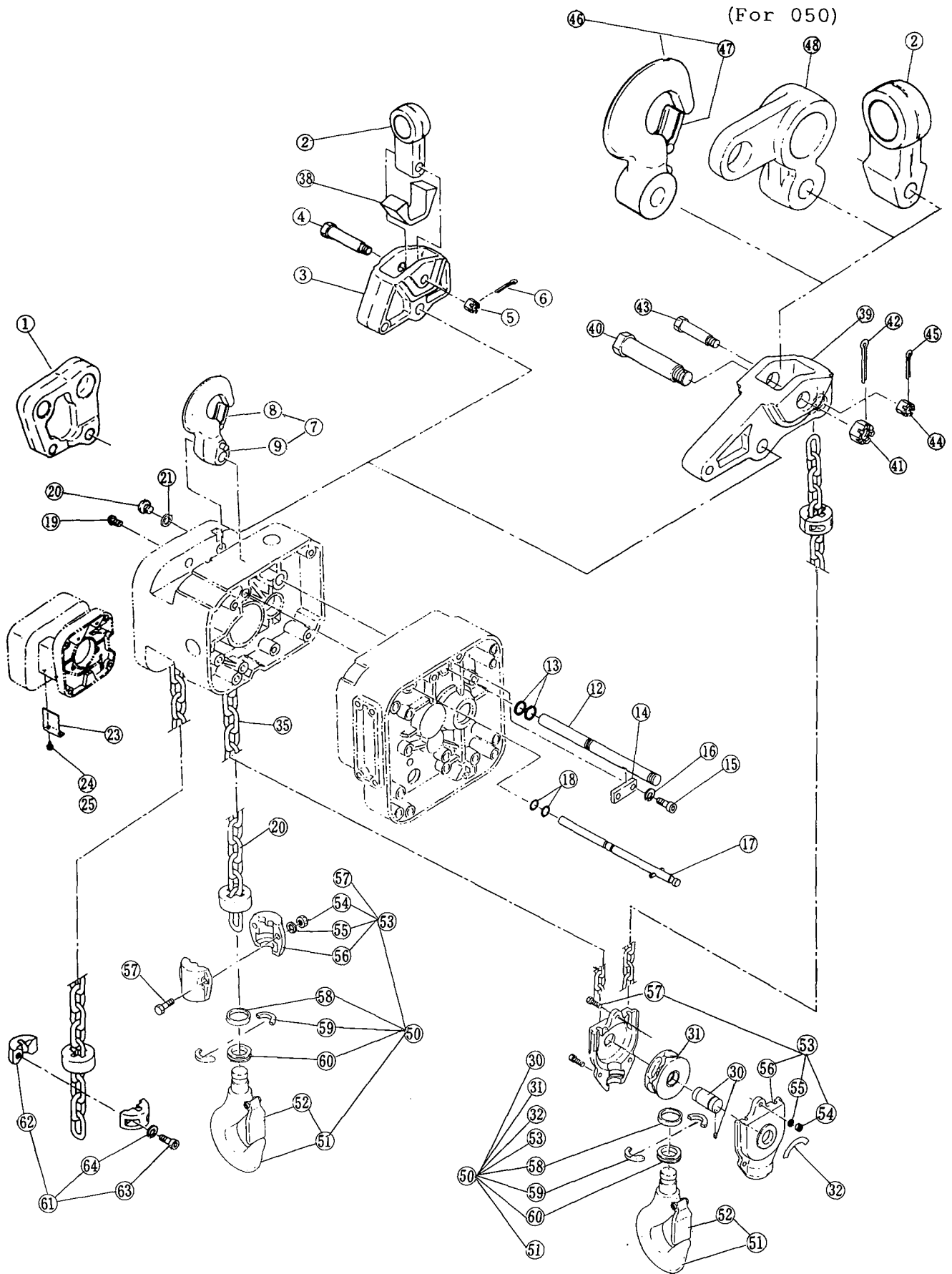


Fig No.	Part No.	Part name	No. per Hoist	Single speed				
				020S	025S	030L	030S	050L
HOOK PARTS								
Low head								
1	031	Suspender T	1					
48	031	Suspender T	1					
39	030	Connection yoke D	1					
40	032	Yoke bolt	1					
41	033	Slotted nut	1					
42	034	Split pin	1					
43	035	Chain pin	1					
44	036	Slotted nut	1					
45	037	Split pin	1					
Suspension								
2	001	Suspender G for motorized trolley	1					
3	029	Connection yoke	1					
39	030	Connection yoke D	1					
4	032	Yoke bolt	1					
40	032	Yoke bolt	1					
5	033	Slotted nut	1					
41	033	Slotted nut	1					
6	034	Split pin	1					
42	034	Split pin	1					
43	035	Chain pin	1					
44	036	Slotted nut	1					
45	037	Split pin	1					
38	028	Connection yoke rubber	1					
Hook suspension								
7	1001	Top hook assembly	1					
8	002	Hook latch assembly	1					
9	006	Fixing pin	1					
39	030	Connection yoke D	1					
40	032	Yoke bolt	1					
41	033	Slotted nut	1					
42	034	Split pin	1					
46	1001	Top hook assembly	1					
47	002	Hook latch assembly	1					
43	035	Chain pin	1					
44	036	Slotted nut	1					
45	037	Split pin	1					
Common								
12	121	Connection shaft	1					
13	126	O ring	2					
14	123	Plate A	1					
15	141	Socket bolt	2					
16	142	Spring lock washer	2					
17	1122	Fixing shaft assembly	1					
18	127	O ring	2					
19	130	Pan head machine screw	1					
20	128	Oil plug B	1					
21	129	Eye bolt packing	1					
23	055	Body protector	1					
24	056	Socket bolt	2					
25	057	Spring lock washer	2					
35	873	Load chain(carburized)	1					
	874	Load chain(nickel plated)	1					
	875	Load chain(nickel defusion)	1					
50	1011	Bottom hook complete set	1					
30	6023	Bottom shaft assembly	1					
31	6021	Idle sheave assembly	1					
32	822	Name plate C	1					
51	2011	Bottom hook assembly	1					
52	002	Hook latch assembly	1					
53	2015	Bottom yoke assembly	1					
54	017	Nut	2					
	017	Nut	3					
55	018	Spring lock washer	2					
	018	Spring lock washer	3					
56	015	Bottom yoke	2					
57	016	Bolt	2					
	016	Bolt	3					
58	013	Thrust collar A	1					
59	014	Hook stopper	2					
60	012	Thrust bearing	1					
61	1045	Stopper assembly	1					
	1045	Stopper assembly	2					
62	041	Stopper	2					
	041	Stopper	4					
63	042	Socket bolt	2					
	042	Socket bolt	4					
64	043	Spring lock washer	2					
	043	Spring lock washer	4					

C: HOOK PARTS

Note: For Suspender G to manual trolley, refer to their part list.

Fig No.	Part No.	Part name	No. per Holst	Dual speed				
				020SD	025SD	030LD	030SD	050LD
HOOK PARTS								
Low head								
1	031	Suspender T	1					
48	031	Suspender T	1					
39	030	Connection yoke D	1					
40	032	Yoke bolt	1					
41	033	Slotted nut	1					
42	034	Split pin	1					
43	035	Chain pin	1					
44	036	Slotted nut	1					
45	037	Split pin	1					
Suspension								
2	001	Suspender G for motorized trolley	1					
3	029	Connection yoke	1					
39	030	Connection yoke D	1					
4	032	Yoke bolt	1					
40	032	Yoke bolt	1					
5	033	Slotted nut	1					
41*	033	Slotted nut	1					
6	034	Split pin	1					
42	034	Split pin	1					
43	035	Chain pin	1					
44	036	Slotted nut	1					
45	037	Split pin	1					
38	028	Connection yoke rubber	1					
Hook suspension								
7	1001	Top hook assembly	1					
8	002	Hook latch assembly	1					
9	006	Fixing pin	1					
39	030	Connection yoke D	1					
40	032	Yoke bolt	1					
41	033	Slotted nut	1					
42	034	Split pin	1					
46	1001	Top hook assembly	1					
47	002	Hook latch assembly	1					
43	035	Chain pin	1					
44	036	Slotted nut	1					
45	037	Split pin	1					
Common								
12	121	Connection shaft	1					
13	126	O ring	2					
14	123	Plate A	1					
15	141	Socket bolt	2					
16	142	Spring lock washer	2					
17	1122	Fixing shaft assembly	1					
18	127	O ring	2					
19	130	Pan head machine screw	1					
20	128	Oil plug B	1					
21	129	Eye bolt packing	1					
23	055	Body protector	1					
24	056	Socket bolt	2					
25	057	Spring lock washer	2					
35	873	Load chain(carburized)	1					
	874	Load chain(nickel plated)	1					
	875	Load chain(nickel defusion)	1					
50	1001	Bottom hook complete set	1					
30	6023	Bottom shaft assembly	1					
31	6021	Idle sheave assembly	1					
32	822	Name plate C	1					
51	2011	Bottom hook assembly	1					
52	1002	Hook latch assembly	1					
53	2015	Bottom yoke assembly	1					
54	017	Nut	2					
	017	Nut	3					
55	018	Spring lock washer	2					
	018	Spring lock washer	3					
56	015	Bottom yoke	2					
57	016	Bolt	2					
	016	Bolt	3					
58	013	Thrust collar A	1					
59	014	Hook stopper	2					
60	012	Thrust bearing	1					
61	1045	Stopper assembly	1					
	1045	Stopper assembly	2					
62	041	Stopper	2					
	041	Stopper	4					
63	042	Socket bolt	2					
	042	Socket bolt	4					
64	043	Spring lock washer	2					
	043	Spring lock washer	4					

C: HOOK PARTS

Note: For Suspender G to manual trolley, refer to their part list.

D CHAINING PARTS

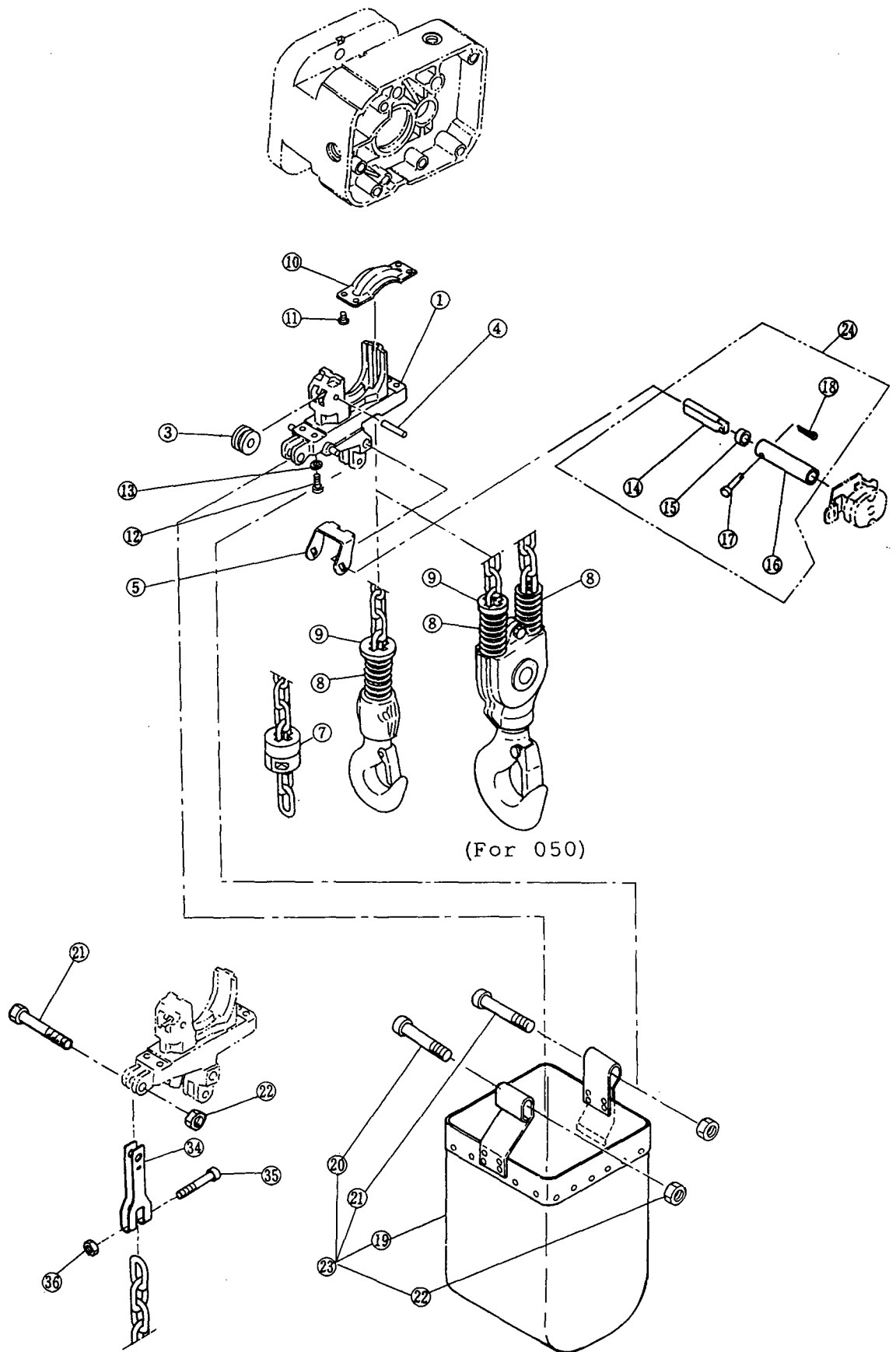


Fig No.	Part No.	Part name	No. per Hoist	Single speed				
				020S	025S	030L	030S	050L

CHAINING PARTS

Upper limit switch

1	331	Chain guide A	1					
5	337	Limit lever S	1					
7	053	Cushion rubber	1					
8	051	Chain spring	1					—
	051	Chain spring	2	—	—	—	—	
9	054	Limit lever striker	1					

Common

3	333	Guide roller	1					
4	334	Roller pin	1					
10	332	Chain guide B	1					
11	348	Machine screw with spring washer	4					
12	346	Socket bolt	4					
13	347	Spring lock washer	4					
24	1338	Limit lever pin assembly	1					
14	338	Limit lever pin	1					
15	340	Limit lever collar	1					
16	339	Limit lever coupling	1					
17	341	Coupling pin	1					
18	342	Split pin	1					
23	5404	Chain container assembly (L.H.<=12m)	1		—	—	—	—
	5404	Chain container assembly (L.H.<= 8m)	1	—	—	—	—	—
	5404	Chain container assembly (L.H.<= 6m)	1	—	—	—	—	—
	5404	Chain container assembly (L.H.<= 4m)	1	—	—	—	—	—
19	404	Chain container (L.H.<=12m)	1	—	—	—	—	—
	404	Chain container (L.H.<= 8m)	1	—	—	—	—	—
	404	Chain container (L.H.<= 6m)	1	—	—	—	—	—
	404	Chain container (L.H.<= 4m)	1	—	—	—	—	—
23	5405	Chain container assembly (L.H.<=18m)	1	—	—	—	—	—
	5405	Chain container assembly (L.H.<=12m)	1	—	—	—	—	—
	5405	Chain container assembly (L.H.<= 8m)	1	—	—	—	—	—
	5405	Chain container assembly (L.H.<= 6m)	1	—	—	—	—	—
19	405	Chain container (L.H.<=18m)	1	—	—	—	—	—
	405	Chain container (L.H.<=12m)	1	—	—	—	—	—
	405	Chain container (L.H.<= 8m)	1	—	—	—	—	—
	405	Chain container (L.H.<= 6m)	1	—	—	—	—	—
20	419	Socket bolt	1					
21	417	Socket bolt	1					
22	418	Lever nut	2					
34	408	Chain end suspender	1				—	
35	396	Socket bolt	1				—	
36	397	Lever nut	1				—	

Note: L.H.(load-lifting Height)

D: CHAINING PARTS

Fig No.	Part No.	Part name	No. per Hoist	Dual speed				
				020SD	025SD	030LD	030SD	050LD

CHAINING PARTS

Upper limit switch

1	331	Chain guide A	1					
5	337	Limit lever S	1					
7	053	Cushion rubber	1					
8	051	Chain spring	1					
	051	Chain spring	2	—	—	—	—	
9	054	Limit lever striker	1					

Common

3	333	Guide roller	1					
4	334	Roller pin	1					
10	332	Chain guide B	1					
11	348	Machine screw with spring washer	4					
12	346	Socket bolt	4					
13	347	Spring lock washer	4					
24	1338	Limit lever pin assembly	1					
14	338	Limit lever pin	1					
15	340	Limit lever collar	1					
16	339	Limit lever coupling	1					
17	341	Coupling pin	1					
18	342	Split pin	1					
23	5404	Chain container assembly (L.H.<=12m)	1		—	—	—	—
	5404	Chain container assembly (L.H.<= 8m)	1	—	—	—	—	—
	5404	Chain container assembly (L.H.<= 6m)	1	—	—	—	—	—
	5404	Chain container assembly (L.H.<= 4m)	1	—	—	—	—	—
19	404	Chain container (L.H.<=12m)	1	—	—	—	—	—
	404	Chain container (L.H.<= 8m)	1	—	—	—	—	—
	404	Chain container (L.H.<= 6m)	1	—	—	—	—	—
	404	Chain container (L.H.<= 4m)	1	—	—	—	—	—
23	5405	Chain container assembly (L.H.<=18m)	1	—	—	—	—	—
	5405	Chain container assembly (L.H.<=12m)	1	—	—	—	—	—
	5405	Chain container assembly (L.H.<= 8m)	1	—	—	—	—	—
	5405	Chain container assembly (L.H.<= 6m)	1	—	—	—	—	—
19	405	Chain container assembly (L.H.<=18m)	1	—	—	—	—	—
	405	Chain container assembly (L.H.<=12m)	1	—	—	—	—	—
	405	Chain container assembly (L.H.<= 8m)	1	—	—	—	—	—
	405	Chain container assembly (L.H.<= 6m)	1	—	—	—	—	—
20	419	Socket bolt	1					
21	417	Socket bolt	1					
22	418	Lever nut	2					
34	408	Chain end suspender	1					—
35	396	Socket bolt	1					—
36	397	Lever nut	1					—

Note: L.H.(load-lifting Height)

D: CHAINING PARTS

Fig No.	Part No.	P
---------	----------	---

RTS 2t(S)(SD), 2.5t(S)(SD), 3t(L)(LD), 5t(L)(LD)

CHAINING

Up

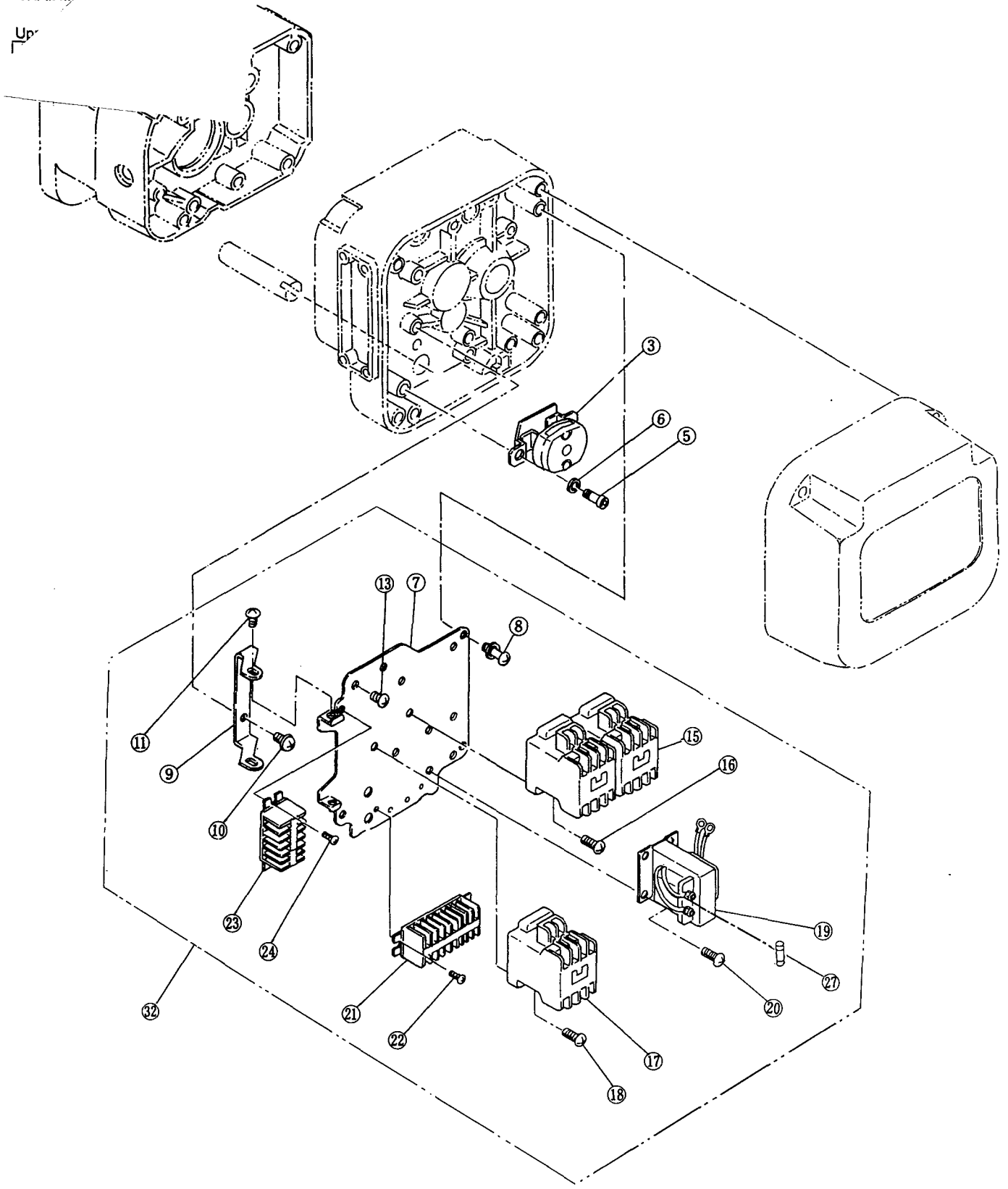


Fig No.	Part No.	Part name	No. per Hoist	Single speed				
				020S	025S	030L	030S	050L

Electric Parts

Upper limit switch

3	1551	Limit switch assembly	1					
---	------	-----------------------	---	--	--	--	--	--

Common

5	353	Socket bolt	3					
6	043	Spring lock washer	3					
32	1441V	Plate assembly (220/440V)	1					
	1441K	Plate assembly (575V)	1					
7	451	Plate (220/440V)	1					
	441	Plate (575V)	1					
8	445	Plate screw	4					
9	442	Hinge	1					
10	446	Machine screw with spring washer	2					
11	443	Pan head machine screw	2					
13	616	Machine screw with spring washer	2					
15	578	Electromagnetic contactor for lifting/lowering	1					
16	612	Machine screw with spring washer	4					
19	577V	Transformer (220/440V)	1					
	577K	Transformer (575V)	1					
20	611	Machine screw with spring washer	4					
21	591V	Terminal plate 9P (220/440V)	1					
	591K	Terminal plate 9P (575V)	1					
22	610	Machine screw with spring washer	2					
27	602	Fuse	1					

E: Electric Parts

Fig No.	Part No.	Part name	No. per Hoist	Dual speed				
				020SD	025SD	030LD	030SD	050LD
Electric Parts								
Upper limit switch								
3	1551	Limit switch assembly	1					
Common								
5	353	Socket bolt	3					
6	043	Spring lock washer	3					
32	1441V	Plate assembly (220/440V)	1					
	1441K	Plate assembly (575V)	1					
7	451	Plate (220/440V)	1					
	441	Plate (575V)	1					
8	445	Plate screw	4					
9	442	Hinge	1					
10	446	Machine screw with spring washer	2					
11	443	Pan head machine screw	2					
13	616	Machine screw with spring washer	2					
15	578	Electromagnetic contactor for lifting/lowering	1					
16	612	Machine screw with spring washer	4					
17	579	Electromagnetic contactor for high/low speed	1					
	620	Electromagnetic contactor for low speed	1					
18	613	Machine screw with spring washer and plain washer	2					
	622	Machine screw with spring washer and plain washer	2					
19	577V	Transformer (220/440V)	1					
	577K	Transformer (575V)	1					
20	611	Machine screw with spring washer	4					
21	591V	Terminal plate 9P (220/440V)	1					
	591K	Terminal plate 9P (575V)	1					
22	610	Machine screw with spring washer	2					
23	592V	Terminal plate 6P (220/440V)	1					
	592K	Terminal plate 6P (575V)	1					
24	609	Machine screw with spring washer	2					
27	602	Fuse	1					
30	621	Electromagnetic contactor for high speed	1					
31	623	Machine screw with spring washer and plain washer	2					

E: Electric Parts

F CONTROL STATION PARTS (Direct Wiring)

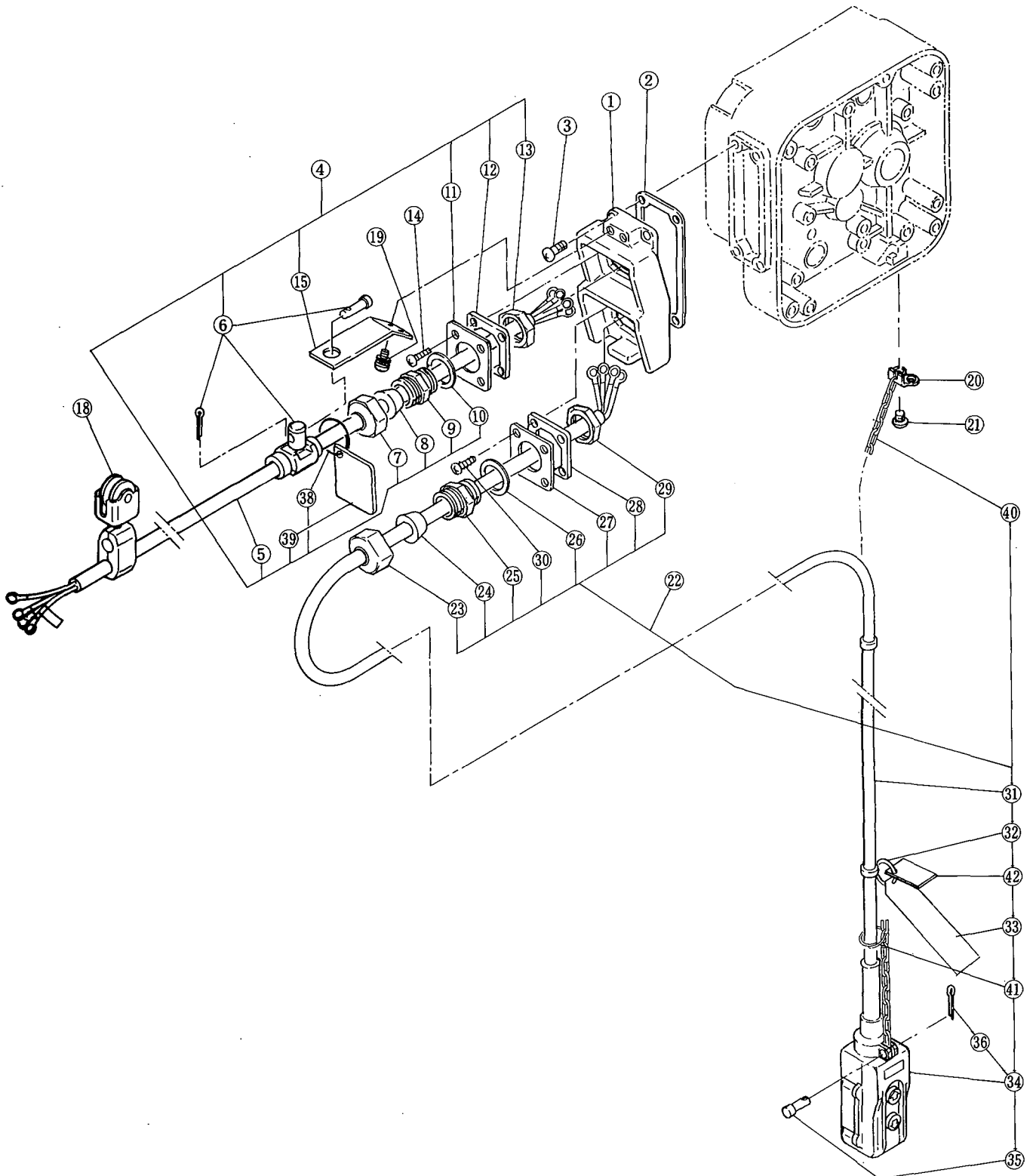


Fig No.	Part No.	Part name	No. per Hoist	Single speed				
				020S	025S	030L	030S	050L

Control station parts

Direct wiring terminal cover

1	513	Terminal cover	1					
2	512	Terminal cover packing	1					
3	516	Machine screw with spring washer	4					
14	517	Tapping machine screw	4					
19	435	Machine screw with spring washer	2					

Power supply cable

4	1521V	Power supply cable 4C assembly (220/440V)	1					
	1521K	Power supply cable 4C assembly (575V)	1					
5	521V	Power supply cable 4C (220/440V)	1					
	521K	Power supply cable 4C (575V)	1					
6	1542	Cable support assembly	1					
	544	Cable support pin B	1					
	545	Split pin	1					
7	569	Holder A	1					
8	574	Cable packing	1					
9	570	Holder B	1					
10	571	Packing	1					
11	515	Holder plate	1					
12	514	Plate packing	1					
13	572	Holder nut	1					
15	541	Cable support arm	1					
18	1641	Cable hanger 14 assembly	3					
20	535	Cord support wire stopper	1					
21	124	Machine screw with spring washer	2					
38	636	Cable ring	1					
39	912V	Tag F (220/440V)	1					
	912K	Tag F (575V)	1					

Push button cord

22	1557	Push button cord 3C assembly	1				
	1558	Push button cord 4C assembly	1				
23	569	Holder A	1				
24	574	Cable packing	1				
25	570	Holder B	1				
26	571	Packing	1				
27	515	Holder plate	1				
28	514	Plate packing	1				
29	572	Holder nut	1				
30	517	Tapping machine screw	4				
31	557	Push button cord 4C	1				
32	566	Tag holder	1				
33	565	Warning tag K	1				
34	1561	2 Push button switch S assembly	1				
	1561	2 Push button switch D assembly	1				
35	544	Cord support pin B	1				
36	545	Split pin	1				
40	631	Cord chain	1				
41	636	Cord ring	1				
42	913	Tag S	1				

F: Control station parts (Direct Wiring)

Fig No.	Part No.	Part name	No. per Hoist	Dual speed				
				020SD	025SD	030LD	030SD	050LD
Control station parts								
Direct wiring terminal cover								
1	513	Terminal cover	1					
2	512	Terminal cover packing	1					
3	516	Machine screw with spring washer	4					
14	517	Tapping machine screw	4					
19	435	Machine screw with spring washer	2					
Power supply cable								
4	1521V	Power supply cable 4C assembly (220/440V)	1					
	1521K	Power supply cable 4C assembly (575V)	1					
5	521V	Power supply cable 4C (220/440V)	1					
	521K	Power supply cable 4C (575V)	1					
6	1542	Cable support assembly	1					
	544	Cable support pin B	1					
	545	Split pin	1					
7	569	Holder A	1					
8	574	Cable packing	1					
9	570	Holder B	1					
10	571	Packing	1					
11	515	Holder plate	1					
12	514	Plate packing	1					
13	572	Holder nut	1					
15	541	Cable support arm	1					
18	1641	Cable hanger 14 assembly	3					
20	535	Cord support wire stopper	1					
21	124	Machine screw with spring washer	2					
38	636	Cable ring	1					
39	912V	Tag F (220/440V)	1					
	912K	Tag F (575V)	1					
Push button cord								
22	1557	Push button cord 3C assembly	1					
	1558	Push button cord 4C assembly	1					
23	569	Holder A	1					
24	574	Cable packing	1					
25	570	Holder B	1					
26	571	Packing	1					
27	515	Holder plate	1					
28	514	Plate packing	1					
29	572	Holder nut	1					
30	517	Tapping machine screw	4					
31	557	Push button cord 4C	1					
32	566	Tag holder	1					
33	565	Warning tag K	1					
34	1561	2 Push button switch S assembly	1					
	1561	2 Push button switch D assembly	1					
35	544	Cord support pin B	1					
36	545	Split pin	1					
40	631	Cord chain	1					
41	636	Cord ring	1					
42	913	Tag S	1					

F: Control station parts (Direct Wiring)



KITO CORP.

Tokyo Opera City Tower 16F,
3-20-2 Nishi-Shinjuku, Shinjuku-ku,
Tokyo 163-1416, Japan
Tel. : 03-5371-7341
Fax. : 03-5371-7349
E-mail : overseas@kito.co.jp
URL : <http://www.kito.co.jp>

KITO CANADA INC.
CHAIN HOISTS

309-3815 1ST AVENUE
BURNABY, BC V5C 3V6
Ph : (604) 291-9955
Fx : (604) 294-8855
E-mail : info@kito.ca
URL : <http://www.kito.ca/>