



ES SERIES ELECTRIC CHAIN HOIST MODEL ES 3

PARTS LIST

IMPORTANT

When ordering replacement parts, please specify the following points:

1. Voltage.
2. Hoist capacity, hoisting speed (S or L) and single or dual speed hoist.
3. Model number in name plate.
4. Correct part names and numbers.
5. Lineal length of push button cord, chain lift or power supply cable.

A HOUSING AND MOTOR PARTS

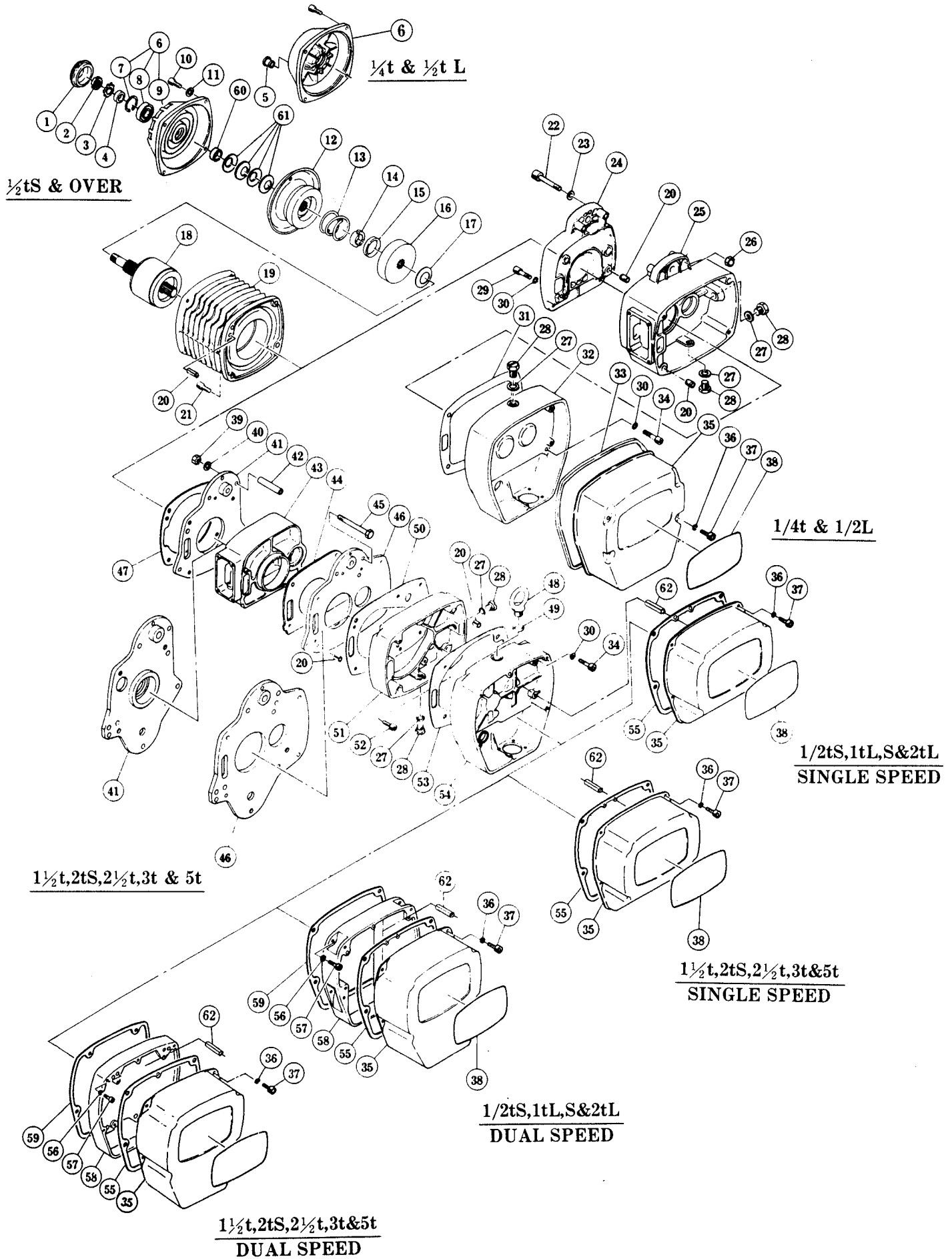


Fig No	Part No	Part Name	Parts per Hoist	Capacity										
				¼	½-L	½-S	1-L	1-S	2-L	1 ½	3	2-S	2 ½	5
1	E3S108	Cover	S	1	1 a			1 b			1 c			
			D											
2	E3S217	Nut	S	1	2 a		2 b		2 c		2 d			
			D		2 b									
3	E3S218	Lock washer	S	1	3 a		3 b		3 c		3 d			
			D		3 b									
4	E3S216	Spacer	S	1	4 a		4 b		4 c		4 d			
			D		4 b									
5	E3S113	Plug		1	5 a									
6	E3S5106	Motor cover assembly	S	1	6 a		6 b		6 c		6 d			
			D		6 e		6 f		6 g		6 h			
7	E3S203	Snap ring	S	1			7 a		7 b		7 c			
			D											
8	E3S202	Ball bearing	S	1			8 a		8 b		8 c			
			D											
9	E3S106	Motor cover	S	1			9 a		9 b		9 c			
			D				9 d		9 e		9 f			
10	E3S156	Socket bolt	S	4	10a		10b		10c		10d			
			D		10e									
11	E3S168	Spring washer	S	4			11a		11b		11c			
			D											
12	E3S5212	Brake drum assembly	S	1	12a		12b		12c		12d			
			D		12e		12f		12g		12h			
13	E3S214	Brake spring	S	1	13a		13b		13c		13d			
			D		13e		13f		13g		13h			
14	E3S505	Thrust disc	S	2	14a		14b		14c		14d			
			D											
15	E3S506	Thrust collar	S	1	15a		15b		15c		15d			
			D											
16	E3S503	Pull rotor	S	1	16a		16b		16c		16d			
			D											
17	E3S504	Coned-disc spring	S	1	17a		17b		17c		17d			
			D											
18	E3S5502	Motor shaft with rotor	S	1	18a		18b		18c		18d			
			D		18e		18f		18g		18h			

Fig No	Part No	Part Name	Parts per Hoist	Capacity											
				¼	½-L	½-S	1-L	1-S	2-L	1 ½	3	2-S	2 ½	5	
19	E3S5501	Motor frame with Stator	S	1	19a		19b		19c		19d				
			D		19e		19f		19g		19h				
20	E3S120	Set pin	4	20a											
			6			20a		20b							
21	E3S157	Socket bolt	4	21a		21b		21c		21d					
22	E3S164	Socket bolt	2	22a											
23	E3S165	Washer	2	23a											
24	E3S102	Body M	1	24a											
25	E3S101	Body G	1	25a											
26	E3S166	U nut with cap	2	26a											
27	E3S112	Plug packing	3	27a											
			2			27a									
28	E3S111	Oil plug	3	28a											
			2			28b									
29	E3S151	Socket bolt	2	29a											
30	E3S153	Toothed lock washer	6	30a											
			4			30a		30b							
			5							30b					
31	E3S109	Gear case packing	1	31a											
32	E3S103	Gear case	1	32a											
33	E3S110	Controller cover packing	1	33a											
34	E3S152	Socket bolt	4	34a		34b		34c							
			5							34d					
35	E3S104	Controller cover	S	1	35a		35b		35c		35d				
			D				35e		35f						
36	E3S155	Spring washer	4	36a				36b							
37	E3S154	Socket bolt	S	4	37a				37b						
			D				37c								
38	E3S800	Name plate	S	1	38a	38b	38c	38d	38e	38f	38g	38h	38i	38j	38k
			D		38l	38m	38n	38o	38p	38q	38r	38s	38t	38u	38v
39	E3S174	Nut	4			39a		39b		39c					
40	E3S175	Spring washer	4			40a		40b		40c					
41	E3S5122	Frame M assembly	1			41a		41b		41c					
42	E3S180	Collar F	4			42a		42b		42c					
43	E3S101	Body	1			43a		43b		43c					

Fig No	Part No	Part Name	Parts per Hoist	Capacity												
				¼	½-L	½-S	1-L	1-S	2-L	1 ½	3	2-S	2 ½	5		
44	E3S124	Packing G	1			44a		44b		44c						
45	E3S173	Bolt	4			45a		45b		45c						
46	E3S5121	Frame G assembly	1			46a		46b		46c						
47	E3S163	Packing M	1			47a		47b		47c						
48	E3S126	Eye bolt	1			48a										
49	E3S127	Eye bolt packing	1			49a										
50	E3S125	Gear case packing A	1			50a		50b		50c						
51	E3S102	Gear case A	1			51a		51b		51c						
52	E3S171	Socket bolt	6			52a		52b								
53	E3S109	Gear case packing B	1			53a		53b		53c						
54	E3S103	Gear case B	S	1		54a		54b		54c						
			D			54d		54e		54f						
55	E3S110	Controller cover packing	1			55a		55b		55c						
*56	E3S177	Spring washer	D	4		56a				56b						
*57	E3S176	Socket bolt	D	4		57a				57b						
*58	E3S131	Balancer	D	1		58a		58b		58c						
*59	E3S132	Balancer packing	D	1		59a		59b		59c						
60	E3S192	Collar M	S	1	60a	60b		60c		60d						
			D		60b											
61	E3S191	Coned disc spring M	S	4	61a	61b		61c		61d						
			D		61e											
62	E3S129	Spring pin	1			62a										

B GEARING PARTS

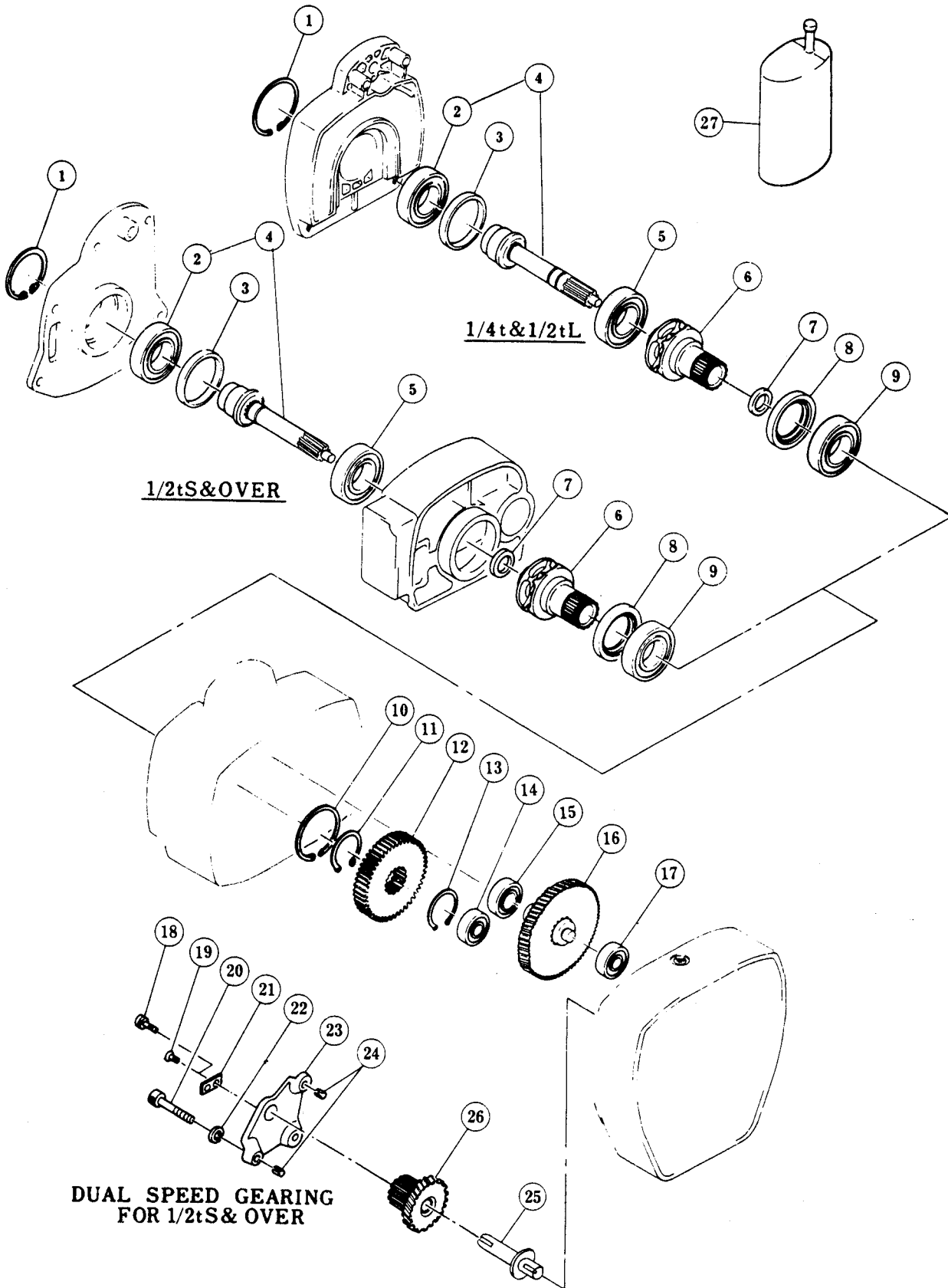


Fig No	Part No	Part Name	Parts per Hoist	Capacity												
				¼	½-L	½-S	1-L	1-S	2-L	1½	3	2-S	2½	5		
1	E3S208	Snap ring	1	1 a												
	E3S209					1 b		1 c								
4	E3S1220	Pinion assembly	1	4 a		4 b		4 c		4 d						
2	E3S205	Ball bearing	1	2 a		2 b		2 c								
3	E3S206	Collar B	1	3 a		3 b		3 c								
5	E3S230	Ball bearing	1	5 a		5 b		5 c		5 d						
6	E3S228	Load sheave	1	6 a		6 b		6 c		6 d		6 e				
7	E3S221	Oil seal	1	7 a		7 b		7 c		7 d						
8	E3S232	Oil seal	1	8 a		8 b		8 c		8 d						
9	E3S231	Ball bearing	1	9 a				9 b		9 c						
10	E3S207	Snap ring	1	10a												
11	E3S233	Snap ring	1	11a												
12	E3S227	Load gear	S	12a		12b		12c		12d		12e		12f		
			D	12g												
13	E3S233	Snap ring	1	13a				13b		13c						
14	E3S222	Ball bearing	1	14a				14b		14c						
15	E3S226	Ball bearing	1	15a		15b		15c		15d						
16	E3S5223	Gear #2 assembly	S	16a		16b		16c		16d		16e		16f		
			D	16g		16h		16i		16j		16k		16l		
17	E3S225	Ball bearing	1	17a		17b		17c		17d						
*18	E3S254	Machine screw with spring washer	D	2							18a					
*19	E3S252	Flat head machine screw	D	2		19a										
*20	E3S251	Socket bolt	D	3		20a		20b		20c						
*21	E3S244	Plate	D	1		21a					21b					
*22	E3S253	Spring washer	D	3		22a		22b								
*23	E3S243	Gear holder plate	D	1		23a		23b		23c						
*24	E3S120	Set pin	D	2		P3-20a		P3-20b								
*25	E3S242	Gear B shaft	D	1		25a		25b		25c						
*26	E3S5241	Gear B assembly	D	1		26a		26b		26c						
27	E3S901	Gear oil	1	27a								27b				

*18~26 are used on Dual Speed type only.

C CHAINING PARTS

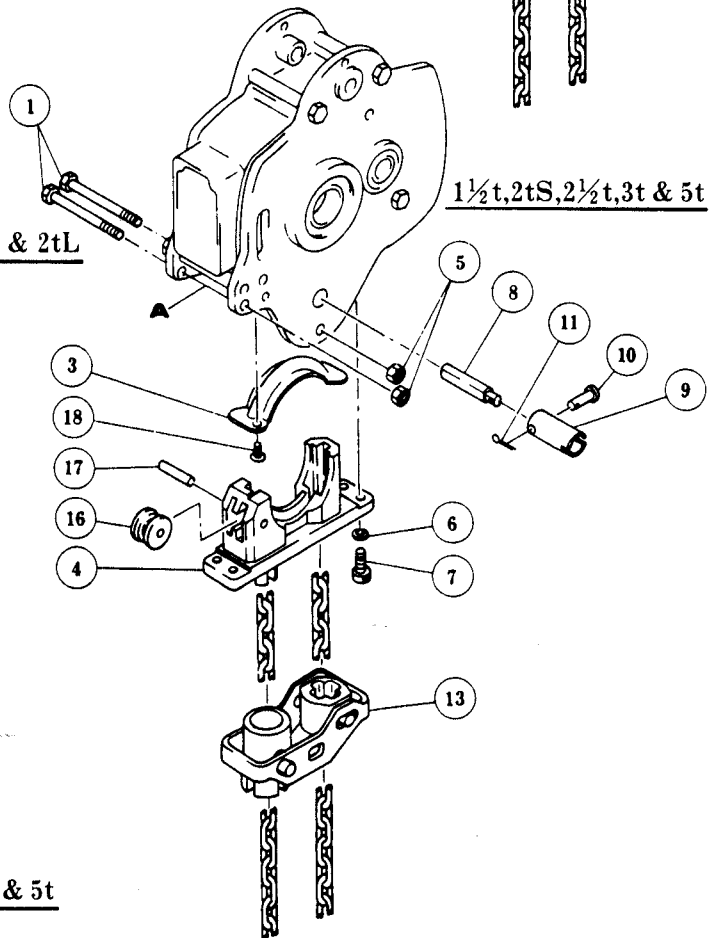
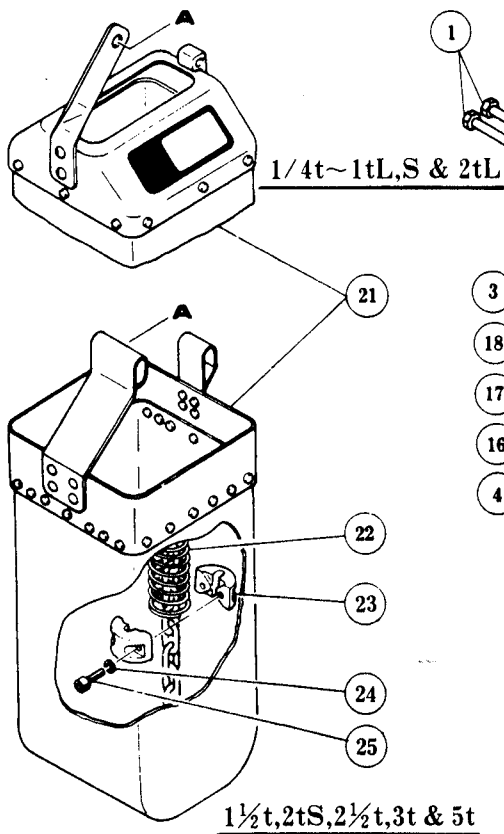
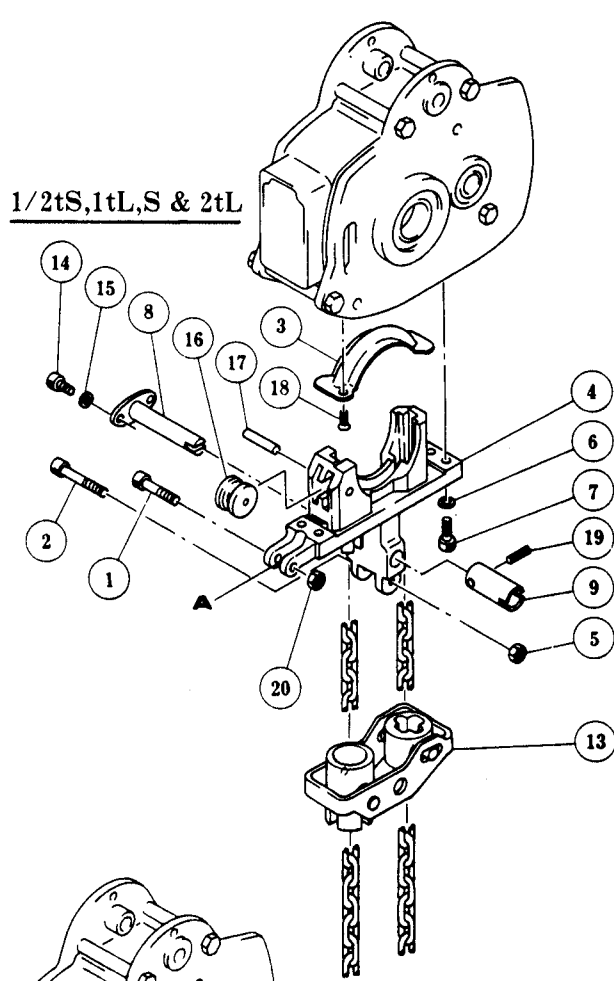
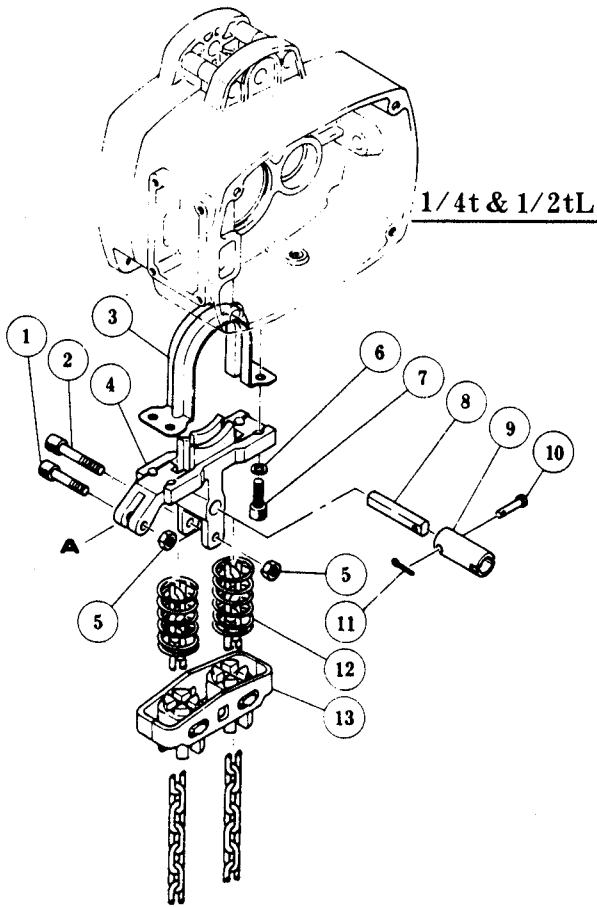
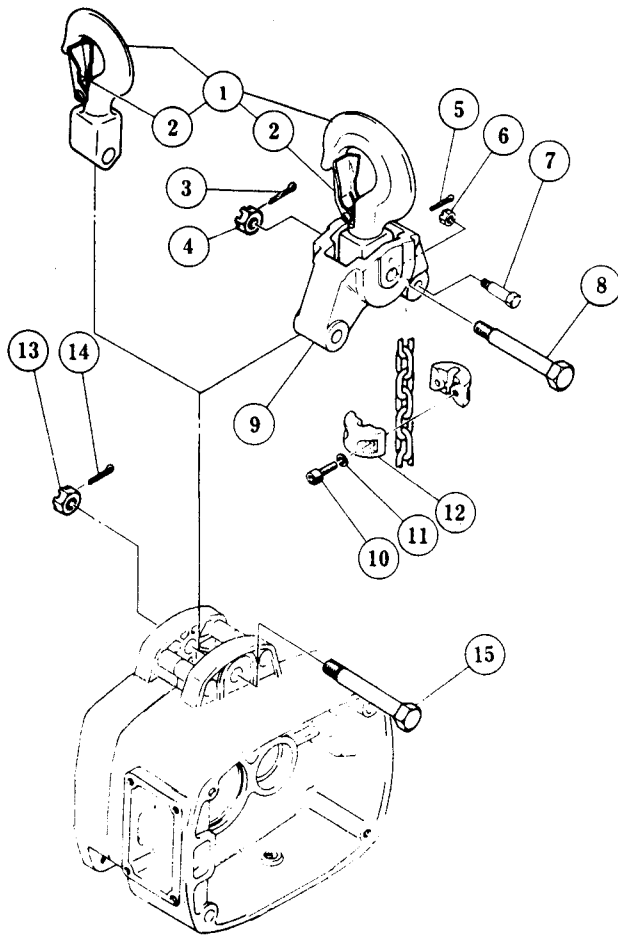


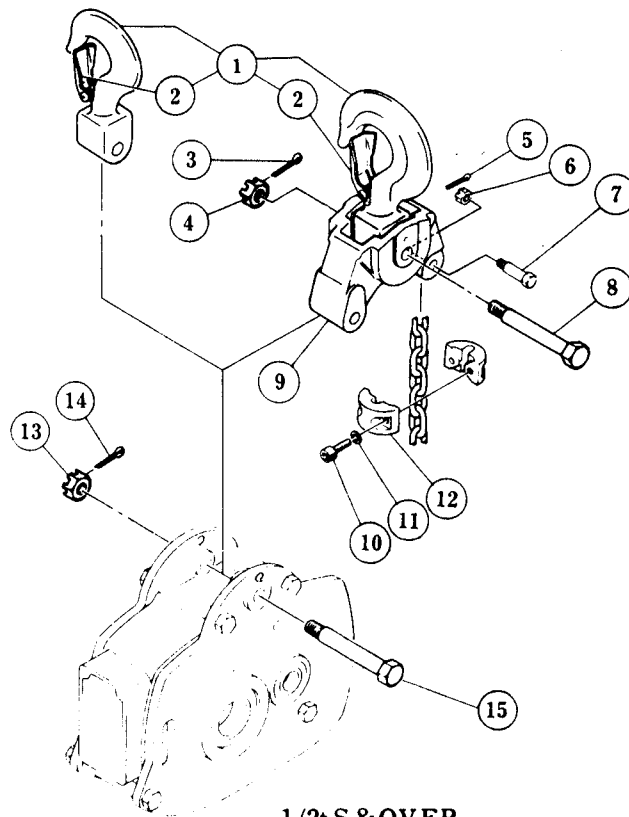
Fig No	Part No	Part Name	Parts per Hoist	Capacity											
				¼	½-L	½-S	1-L	1-S	2-L	1 ½	3	2-S	2 ½	5	
1	E3S854	Socket bolt	1	1 a		1 b									
		Bolt*	2							1 c					
2	E3S856	Socket bolt	1	2 a											
3	E3S402	Chain guide B	1	3 a		3 b		3 c		3 d			3 e		
4	E3S401	Chain guide A	1	4 a		4 b		4 c		4 d			4 e		
5	E3S855	U nut	2	5 a						5 b					
			1	5 a											
6	E3S452	Spring washer	4	6 a				6 b							
7	E3S461	Socket bolt	4	7 a		7 b		7 c		7 d					
8	E3S406	Limit lever pin	1	8 a						8 b					
	E3S5406	Limit lever pin assembly	1	8 c											
9	E3S407	Lever pin coupling	S	1	9 a		9 b		9 c		9 d				
			D		9 e		9 f								
10	E3S408	Coupling pin	1	10a						10b					
11	E3S453	Split pin	1	11a								11a			
12	E3S410	Guide spring	2	12a											
13	E3S5405	Limit lever assembly	1	13a		13b		13c		13d			13e		
14	E3S464	Socket bolt	2	14a											
15	E3S465	Spring washer	2	15a											
16	E3S403	Guide roller	1	16a		16b		16c			16d				
17	E3S404	Roller pin	1	17a		17b		17c							
18	E3S463	Flat head machine screw	2	18a											
		Machine screw with spring washer								18b					
19	E3S451	Spring pin	1	19a											
20	E3S857	U nut	1	20a											
* 21	E3S5830	Chain container L	1	21a		21b		21c		21d					
	E3S5831	Chain container S		21e		21a		21f		21g					
22	E3S047	Chain spring	S	1	22a		22b		22c		22d			22e	
			D		22f		22g		22h		22i			22j	
23	E3S045	Stopper	2	23a		23b				23c			23d		
24	E3S087	Spring washer	2	24a		24b				24c					
25	E3S086	Socket bolt	2	25a		25b				25c					

*21 is available on request.

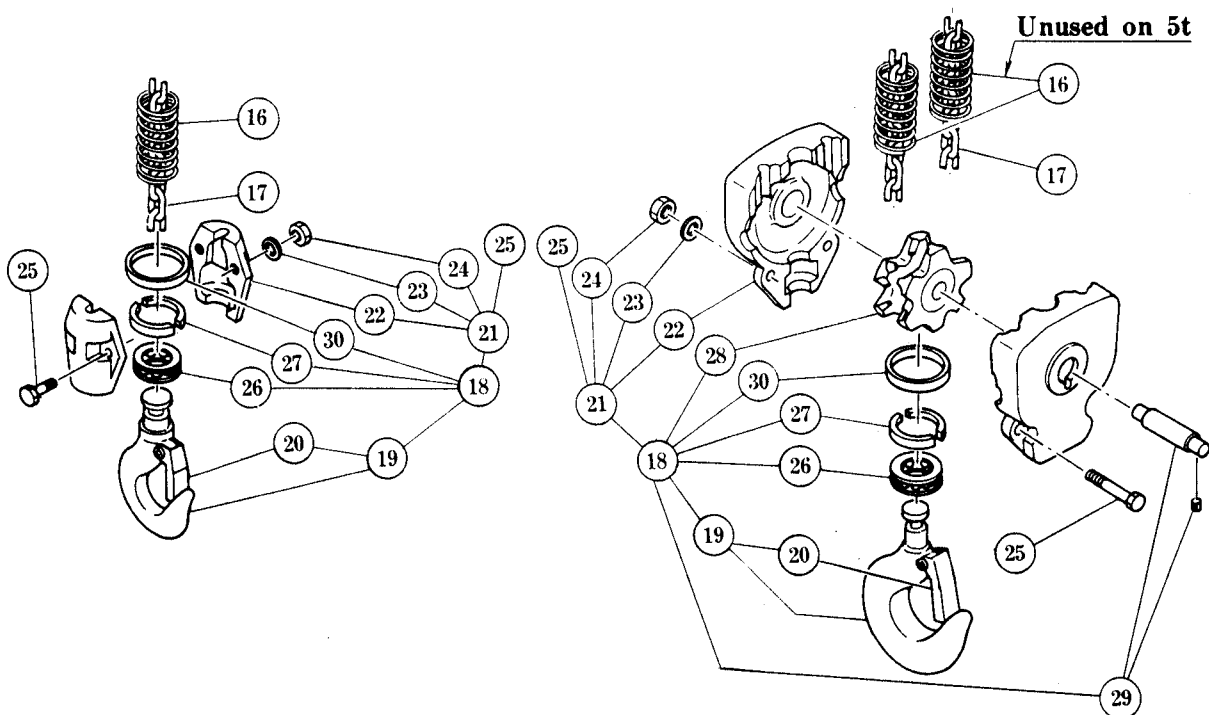
D HOOK PARTS



1/4t & 1/2tL



1/2t S & OVER

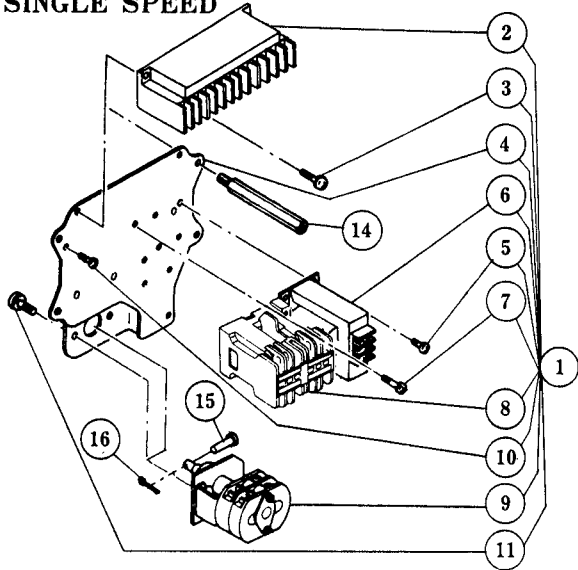


Unused on 5t

Fig No	Part No	Part Name	Parts per Hoist	Capacity											
				¼	½-L	½-S	1-L	1-S	2-L	1½	3	2-S	2½	5	
1	E3S1001	Top hook assembly	1	1 a			1 b			1 c		1 d	1 c	1 d	1 e
	2	E3S1071	Hook latch assembly	1	2 a			2 b		2 c		2 d	2 c	2 d	2 e
3	E3S089	Split pin	1		3 a		3 a		3 b		3 b			3 c	
4	E3S088	Slotted nut	1		4 a		4 a		4 b		4 b			4 c	
5	E3S096	Split pin	1		5 a		5 a		5 b		5 b			5 c	
6	E3S049	Slotted nut	1		6 a		6 a		6 b		6 c			6 d	
7	E3S041	Chain pin	1		7 a		7 b		7 c		7 d			7 e	
8	E3S006	Top pin L	1		8 a		8 a		8 b		8 b			8 c	
9	E3S005	Connection yoke	1		9 a		9 b		9 c		9 d			9 e	
10	E3S086	Socket bolt	2		P8-25a		P8-25b		P8-25b		P8-25c				
11	E3S087	Spring washer	2		P8-24a		P8-24b		P8-24b		P8-24c				
12	E3S045	Stopper	2		P8-23a		P8-23b		P8-23b		P8-23c				
13	E3S161	Slotted nut	1	13a					13b						
14	E3S162	Split pin	1	14a					14b						
15	E3S117	Top pin	1	15a			15b		15c		15d				
16	E3S047	Chain spring	S	1	P8-22a		P8-22b		P8-22c		P8-22d		P8-22d	P8-22e	
				2		P8-22a		P8-22b		P8-22c		P8-22d			
			D	1	P8-22f		P8-22g		P8-22h		P8-22i		P8-22i	P8-22j	16a
				2		P8-22f		P8-22g		P8-22h		16b			
17	E3S840	Load chain	1	17a		17b		17c		17d			17e		
18	E3S1021	Bottom hook complete set	1	18a	18b	18c	18d	18e	18f	18g	18h	18i	18j	18k	
19	E3S2021	Bottom hook assembly	1	19a	19b		19c		19d	19e	19f	19d	19g	19h	
20	E3S1071	Hook latch assembly	1	20a			20b		20c		20d	20e	20c	20f	
21	E3S5032	Bottom yoke assembly	1	21a	21b	21c	21d	21e	21f	21g	21h	21i	21j	21k	
22		Bottom yoke	2	22a	22b	22c	22d	22e	22f	22g	22h	22i	22j	22k	
23		Spring washer	2	23a			23b			23c		23c		23d	
			3						23c		23d				
24		Nut	2	24a			24b			24c		24c		24d	
			3						24c		24d				
25		High strength bolt	2	25a		25a		25b		25c		25c	25d		
			2		25e		25f		25f						
			3								25g			25h	
26	E3S022	Thrust bearing	1	26a			26b		26c		26d	26c	26d	26e	
27	E3S027	Hook stopper	2	27a			27b		27c		27d	27c	27d	27e	
28	E3S1051	Idle sheave assembly	1		28a		28b		28c		28d			28e	
29	E3S5054	Bottom shaft assembly	1		29a		29b		29c		29d			29e	
30	E3S026	Thrust collar A	1	30a			30b		30c		30d	30c	30d	30e	

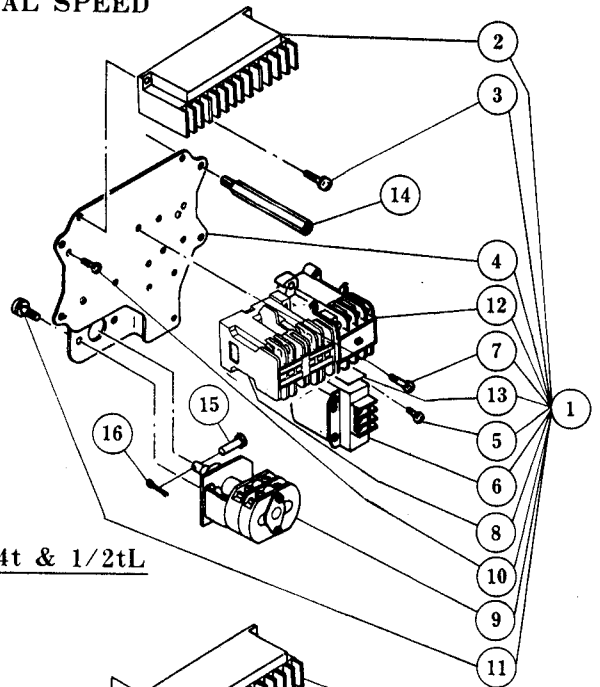
E ELECTRIC PARTS

SINGLE SPEED

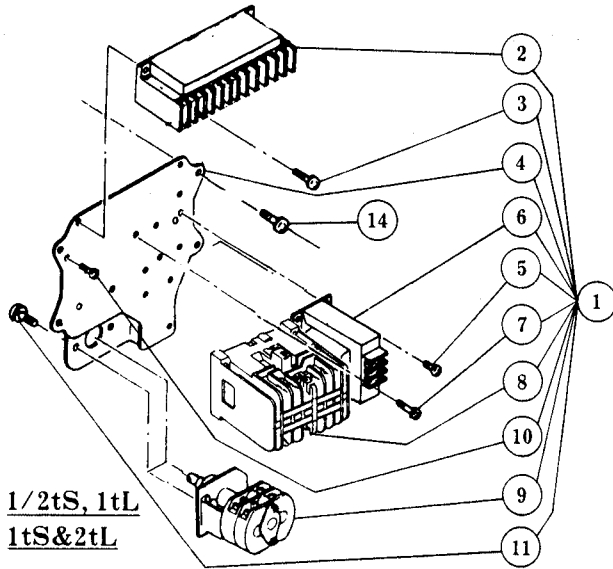


1/4 & 1/2tL

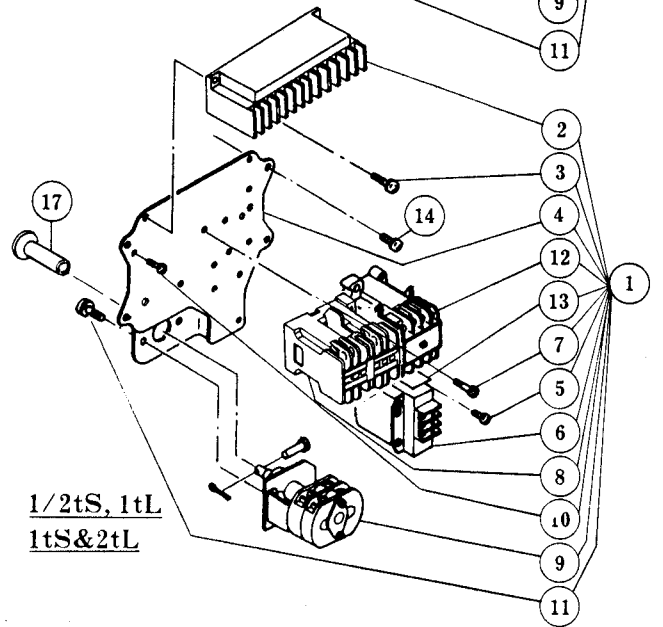
DUAL SPEED



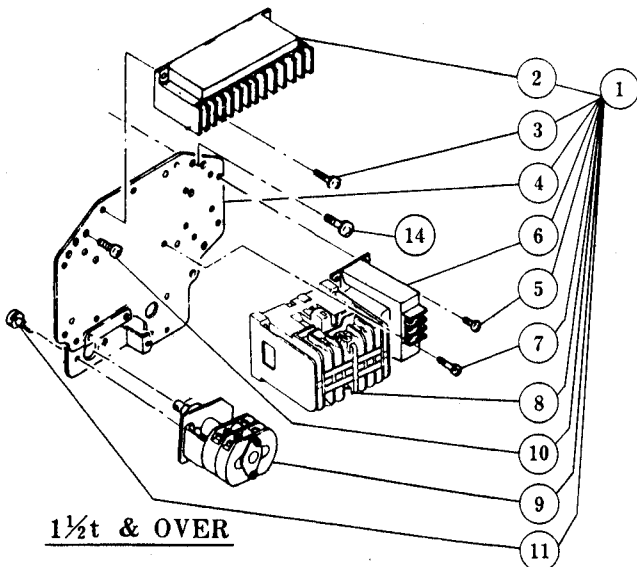
1/4t & 1/2tL



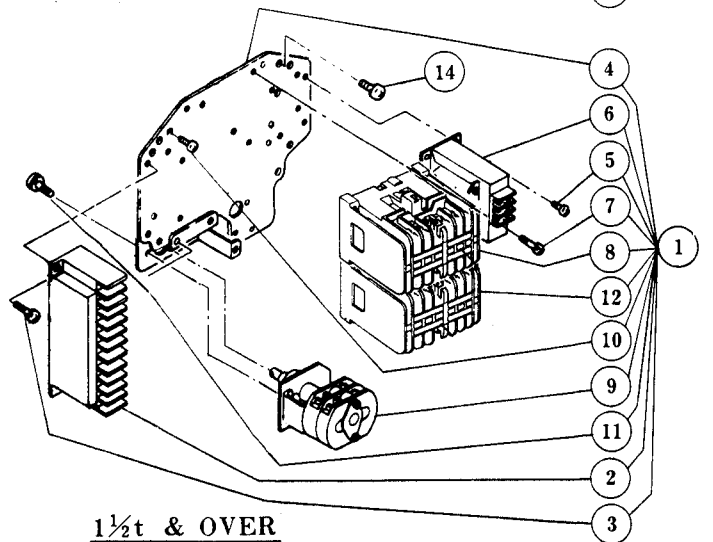
1/2tS, 1tL
1tS&2tL



1/2tS, 1tL
1tS&2tL



1 1/2t & OVER



1 1/2t & OVER

Fig No	Part No	Part Name	Parts per Hoist	Capacity												
				¼	½-L	½-S	1-L	1-S	2-L	1½	3	2-S	2½	5		
1	E3S1601	Plate complete set	S	1	1 a		1 b		1 c		1 d					
			D		1 e		1 f		1 g		1 h					
2	E3S622	Non-reverse relay	S	1	2 a					2 b						
			D		2 c					2 d						
3	E3S666	Machine screw with spring washer		2	3 a											
4	E3S5601	Plate assembly	S	1	4 a		4 b		4 c							
			D		4 d		4 e		4 f							
	S							4 g								
	D												4 h			
5	E3S660	Machine screw with spring washer	S	4	5 a											
			D		3											
					4											5 b
6	E3S616	Transformer	S	1	6 a					6 b						
			D		6 c				6 d		6 e					
7	E3S662	Machine screw with spring washer	S	2	7 a											
					3	7 a										
			D		2	7 a										
					6	7 b										7 a
8	E3S617	Electromagnetic contactor S	S	1	8 a					8 b						
		Electromagnetic contactor B	D							8 c						
9	E3S1619	Limit switch complete set	S	1	9 a		9 b				9 c					
			D								9 d					
*10	E3S670	Machine screw with spring washer		1	10a					10b						
11	E3S664	Machine screw with spring washer		2	11a											
12	E3S618	Electromagnetic contactor	D	1	12a				12b		12c					
13	E3S635	Insulating paper	D	1	13a											
14	E3S602	Stay bolt		4	14a											
	E3S650	Machine screw with spring washer			14b											
15	E3S408	Coupling pin		1	15a											
16	E3S453	Split pin		1	16a											
17	E3S634	Dust guard	D	1			17a									

*10 is used on hoists except for 220/380V, 380V, 220V (50Hz).

F CONTROL STATION PARTS 220/380V, 220V, 380V -50Hz

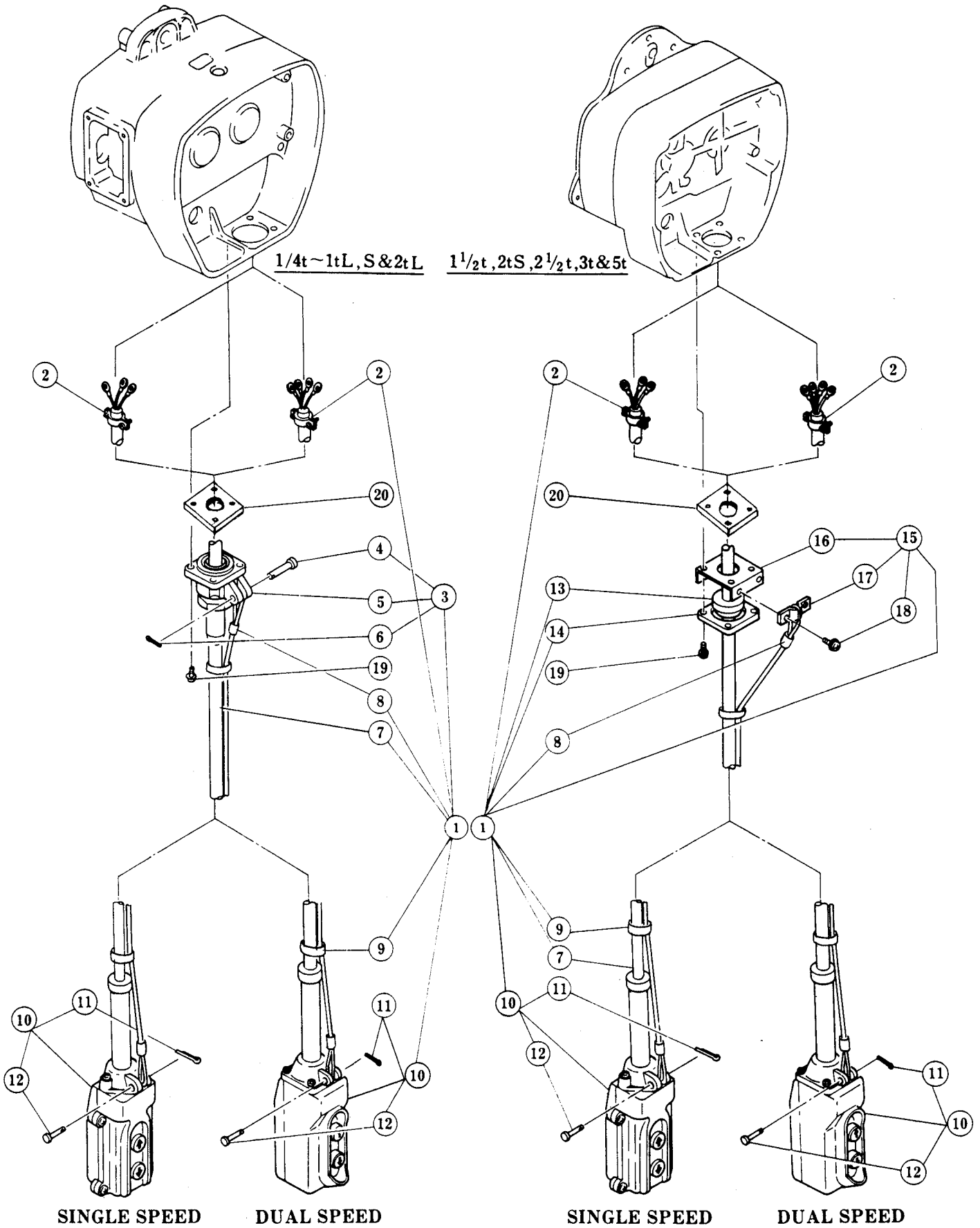


Fig No	Part No	Part Name	Parts per Hoist	Capacity										
				¼	½-L	½-S	1-L	1-S	2-L	1 ½	3	2-S	2 ½	5
1	E3S1607S	2 Push button cord complete set	S	1	1 a						1 b			
	D		1 c						1 d					
2	E3S343	Cord clamp 12 assembly	1	2 a										
		Cord clamp 14 assembly								2 b				
3	E3S1704	Cord holder A complete set	1	3 a										
4	E3S628	Cord chain pin	1	4 a										
5	E3S1340	Cord holder A assembly	1	5 a										
6	E3S671	Split pin	1	6 a										
7	E3S607S	Push button cord 3C	S	1	7 a									
	E3S607D	Push button cord 4C	D		7 b									
8	E3S638	Fixing sleeve	2	8 a										
9	E3S637	Lock-belt	2	9 a										
10	E3S1615S	2 Push button switch assembly	S	1	10a									
	E3S1615D		D		10b									
11	E3S671	Split pin	1	6 a										
12	E3S541	Cord chain pin	1	12a										
13	E3S341	Packing 12	1							13a				
14	E3S340	Cord holder 42	1							14a				
15	E3S1342	Holder plate U assembly	1							15a				
16	E3S342	Holder plate U	1							16a				
17	E3S611	Cord chain stopper	1							17a				
18	E3S659	Machin screw with spring washer	2							18a				
19	E3S350	Machin screw with spring washer	4	19a						19b				
20	E3S609	Socket holder packing B	1	20a						20b				

CONTROL STATION PARTS 220/440V, 220V, 440V -60HZ & OTHER VOLTAGES

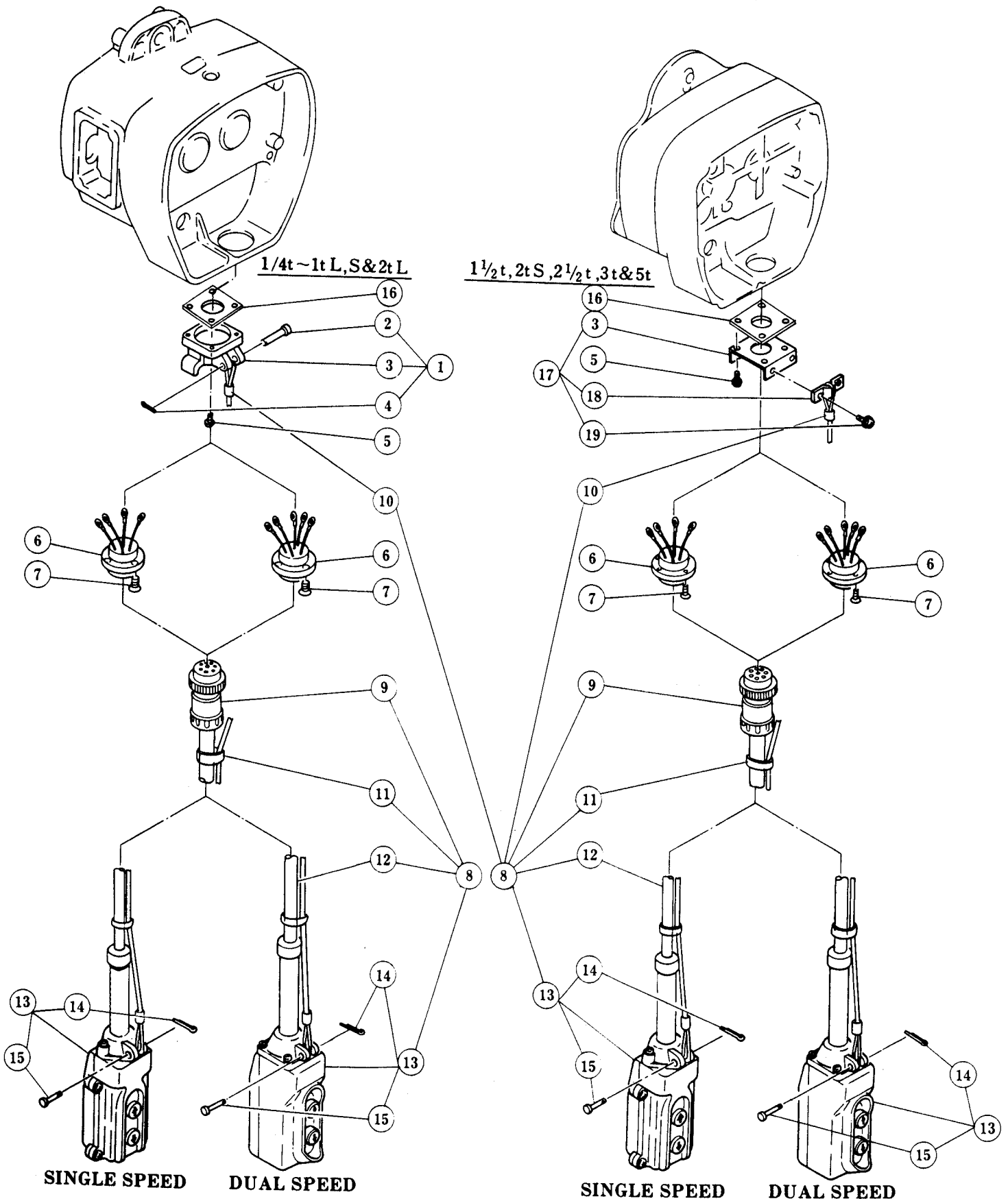
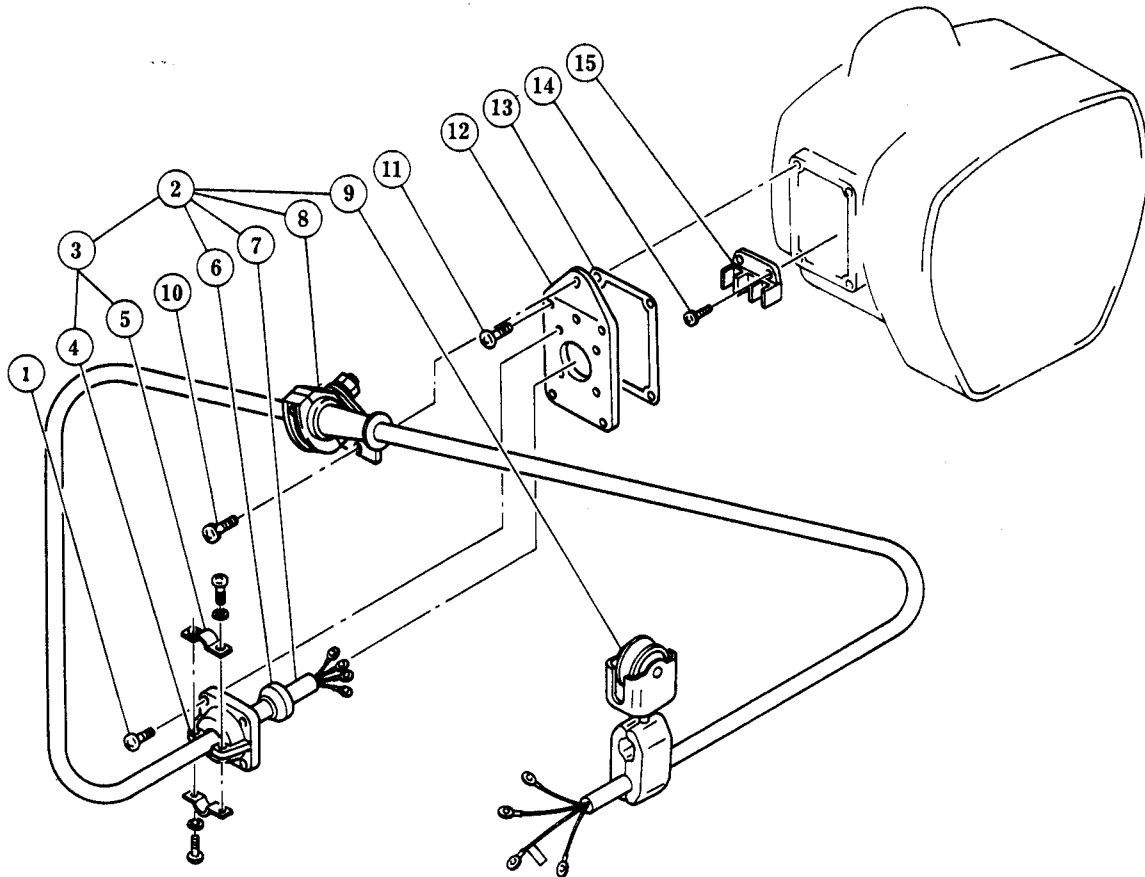
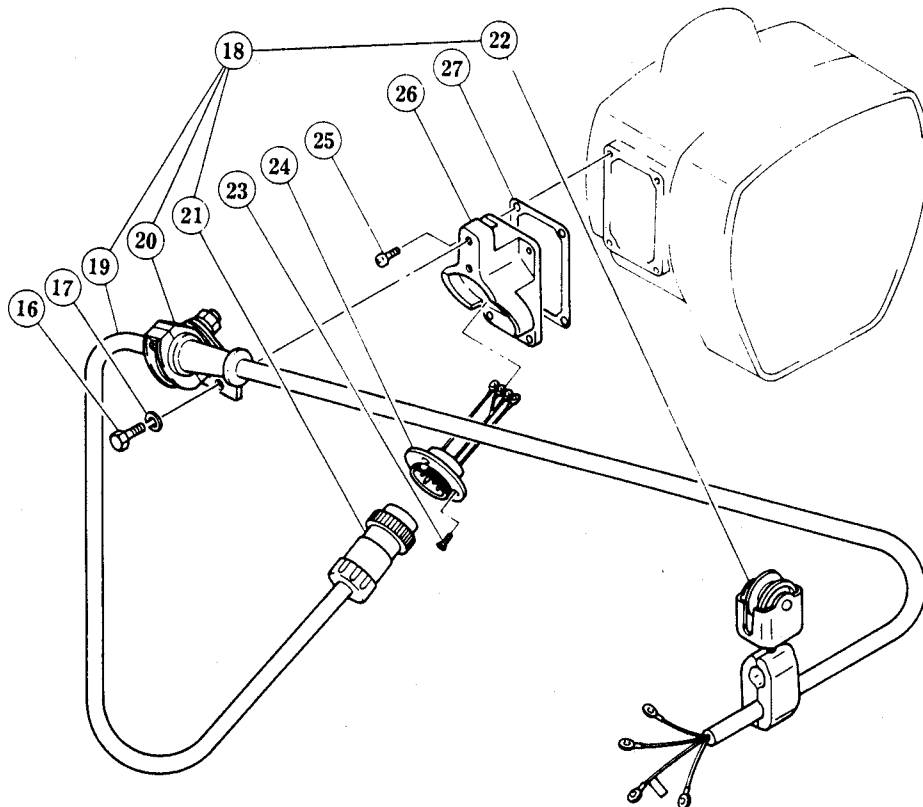


Fig No	Part No	Part Name	Parts per Hoist	Capacity										
				¼	½-L	½-S	1-L	1-S	2-L	1½	3	2-S	2½	5
1	E3S1610	Socket holder B assembly	1	1 a										
2	E3S628	Cord chain pin	1	2 a										
3	E3S610	Socket holder B	1	3 a										
4	E3S671	Split pin	1	P14-6a										
5	E3S656	Machine screw with spring washer	4	5 a						5 b				
6	E3S1614S	Socket 5P with 4 leads	S	6 a						6 b				
	E3S1614D	Socket 5P with 5 leads	D	6 c						6 d				
7	E3S658	Tapping screw	4	7 a										
		Flat head machine screw								7 b				
8	E3S1607S	2 Push button cord complete set	S	8 a										
	E3S1607D		D	8 b										
9	E3S613	Plug 5P	1	9 a										
10	E3S638	Fixing sleeve	2	P14-8a										
11	E3S637	Lock-belt	2	P14-9a										
12	E3S607S	Push button cord 3C	S	12a										
	E3S607D	Push button cord 4C	D	12b										
13	E3S1615S	2 Push button switch assembly	S	P14-10a										
	E3S1615D		D	P14-10b										
14	E3S671	Split pin	1	P14-6a										
15	E3S541	Cord chain pin	1	P14-12a										
16	E3S609	Socket holder packing B	1	P14-20a						P14-20b				
17	E3S1610	Socket holder B assembly	1							17a				
3	E3S610	Socket holder B	1							3 a				
18	E3S611	Cord chain stopper	1							P14-17a				
19	E3S659	Machine screw with spring washer	2							19a				

G POWER SUPPLY PARTS



220/380V, 220V, 380V -50Hz



220/440V, 220V, 440V -60Hz & OTHER VOLTAGES

Fig No	Part No	Part Name	Parts per Hoist	Capacity										
				¼	½-L	½-S	1-L	1-S	2-L	1½	3	2-S	2½	5
220/380V, 220V, 380V-50Hz														
1	E3S331	Machine screw with spring washer	4	1 a										
2	E3S1521	Power supply cable complete set	1	2 a								2 b		
3	E3S1516	Cable holder M assembly	1	3 a										
4	E3S321	Cable holder M	1	4 a										
5	E3S323	Cable clamp 14 assembly	1	5 a										
6	E3S322	Cable packing 13	1	6 a										
		Cable packing 14										6 b		
7	E3S521	Power supply cable 4C	1	7 a								7 b		
8	E3S1822	Cable clamp arm assembly	1	8 a								8 b		
9	E3S1527	Cable hanger assembly	3	9 a										
10	E3S852	Machine screw with spring washer	2	10a										
11	E3S330	Machine screw with spring washer	4	11a										
12	E3S320	Terminal cover	1	12a										
13	E3S119	Socket holder packing A	1	13a					13b					
14	E3S351	Machine screw with spring washer	2	14a										
15	E3S5345	Terminal plate 3P assembly	1	15a										
220/440V, 220V, 440V-60Hz & OTHER VOLTAGES														
16	E3S852	Bolt	2	16a										
17	E3S853	Spring washer	2	17a										
18	E3S1521	Power supply cable complete set	1	18a								18b		
19	E3S521	Power supply cable 4C	1	19a								19b		
20	E3S1822	Cable clamp arm assembly	1	20a								20b		
21	E3S522	Plug 4P	1	21a								21b		
22	E3S1527	Cable hanger assembly	3	9 a										
23	E3S551	Flat head machine screw	4	P16-7a										
24	E3S1523	Socket 4P assembly	S	24a								24b		
			D									24c		
25	E3S159	Machine screw with spring washer	4	25a										
26	E3S118	Socket holder A	1	26a										
27	E3S119	Socket holder packing A	1	13a					13b					



KITO CORP

3-37-4, Yoyogi, Shibuya-ku,
Tokyo 151-0053, Japan
TEL:03-5371-7341
FAX:03-5371-7349
TELEX:222-2942 KITO J
CABLE:KITOKSK TOKYO
URL <http://www.kito.co.jp>