



# ES SERIES ELECTRIC CHAIN HOIST ES3 MODEL

# PARTS LIST

## IMPORTANT

When ordering replacement parts, please specify the following points:

1. Voltage.
2. Hoist capacity, hoisting speed (S or L) and single or dual speed hoist.
3. Model number in name plate.
4. Correct part names and numbers.
5. Lineal length of push button cord, chain lift or power supply cable.

# A HOUSING AND MOTOR PARTS

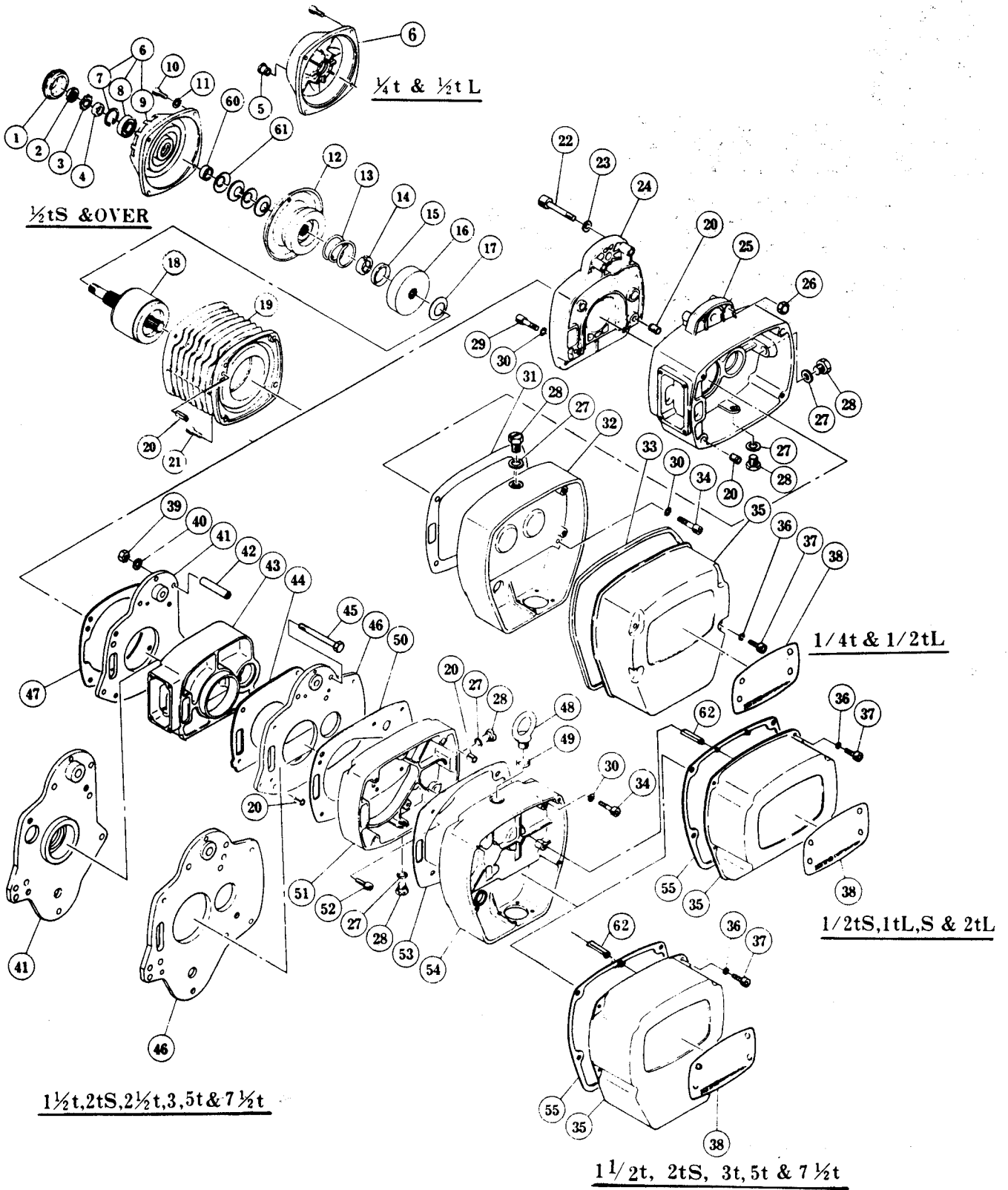


Fig No	Part No	Part Name	Parts per Hoist	Capacity														
				¼	½-L	½-S	1-L	1-S	2-L	1½	3	2-S	2½	5	7½			
1	E3S108	Cover	1															
2	E3S217	Nut	1															
3	E3S218	Lock washer	1															
4	E3S216	Spacer	1															
5	E3S113	Plug	1															
⑥	E3S5106	Motor cover assembly	1															
7	E3S203	Snap ring	1															
8	E3S202	Ball bearing	1															
⑨	E3S106	Motor cover	1															
10	E3S156	Socket bolt	4															
11	E3S168	Spring washer	4															
⑫	E3S5212	Brake drum assembly	1															
13	E3S214	Brake spring	1															
14	E3S505	Thrust disc	2															
15	E3S506	Thrust collar	1															
16	E3S503	Pull rotor	1															
17	E3S504	Coned-disc spring	1															
18	E3S5502	Motor shaft with rotor	1															
19	★1	Motor frame with stator	1															
20	E3S120	Set pin	4															
			6															
21	E3S157	Socket bolt	4															
22	E3S164	Socket bolt	2															
23	E3S165	Washer	2															
24	E3S102	Body M	1															

★1: E3S5501 CV : 220/440 V, E3S5501 CK : 575 V  
 Circled Fig No. shows a part exclusive for ES3 model.

Fig No	Part No	Part Name	Parts per Hoist	Capacity													
				¼	½-L	½-S	1-L	1-S	2-L	1 ½	3	2-S	2 ½	5	7 ½		
25	E3S101	Body G	1								—						
26	E3S166	U nut with cap	2								—						
27	E3S112	Plug packing	3								—						
			2	—													
28	E3S111	Oil plug	3								—						
			2	—													
29	E3S151	Socket bolt	2								—						
30	E3S153	Toothed lock washer	6								—						
			4	—								—					
			5		—												
31	E3S109	Gear case packing	1								—						
32	E3S103	Gear case	1								—						
33	E3S110	Controller cover packing	1								—						
34	E3S152	Socket bolt	4									—					
			5		—												
35	E3S104	Controller cover	1														
36	E3S155	Spring washer	4														
37	E3S154	Socket bolt	4														
③	★2	Name plate	1														
39	E3S174	Nut	4	—													
40	E3S175	Spring washer	4	—													
41	E3S5122	Frame M assembly	1	—													
42	E3S180	Collar F	4	—													
43	E3S101	Body	1	—													
44	E3S124	Packing G	1	—													
45	E3S173	Bolt	4	—													
46	E3S5121	Frame G assembly	1	—													
47	E3S163	Packing M	1	—													

★2:E3S800 CV;220/400V, E3S800CK;575V for ES hoists.

E3SM800CV;220/400V, E3SM800CK;575V for ESM hoists.

Circled Fig No. shows a part exclusive for ES3 model.

Fig No	Part No	Part Name	Parts per Hoist	Capacity														
				¼	½-L	½-S	1-L	1-S	2-L	1½	3	2-S	2½	5	7½			
48	E3S126	Eye bolt	1	—														
49	E3S127	Eye bolt packing	1	—														
50	E3S125	Gear case packing A	1	—														
51	E3S102	Gear case A	1	—														
52	E3S171	Socket bolt	6	—														
53	E3S109	Gear case packing B	1	—														
54	E3S103	Gear case B	1	—														
55	E3S110	Controller cover packing	1	—														
60	E3S192	Collar M	1	—														
⑥1	E3S191	Coned disc spring M	4															
⑥2	E3S129	Spring pin	1	—														

Circled Fig No. shows a part exclusive for ES3 model.

# B GEARING PARTS

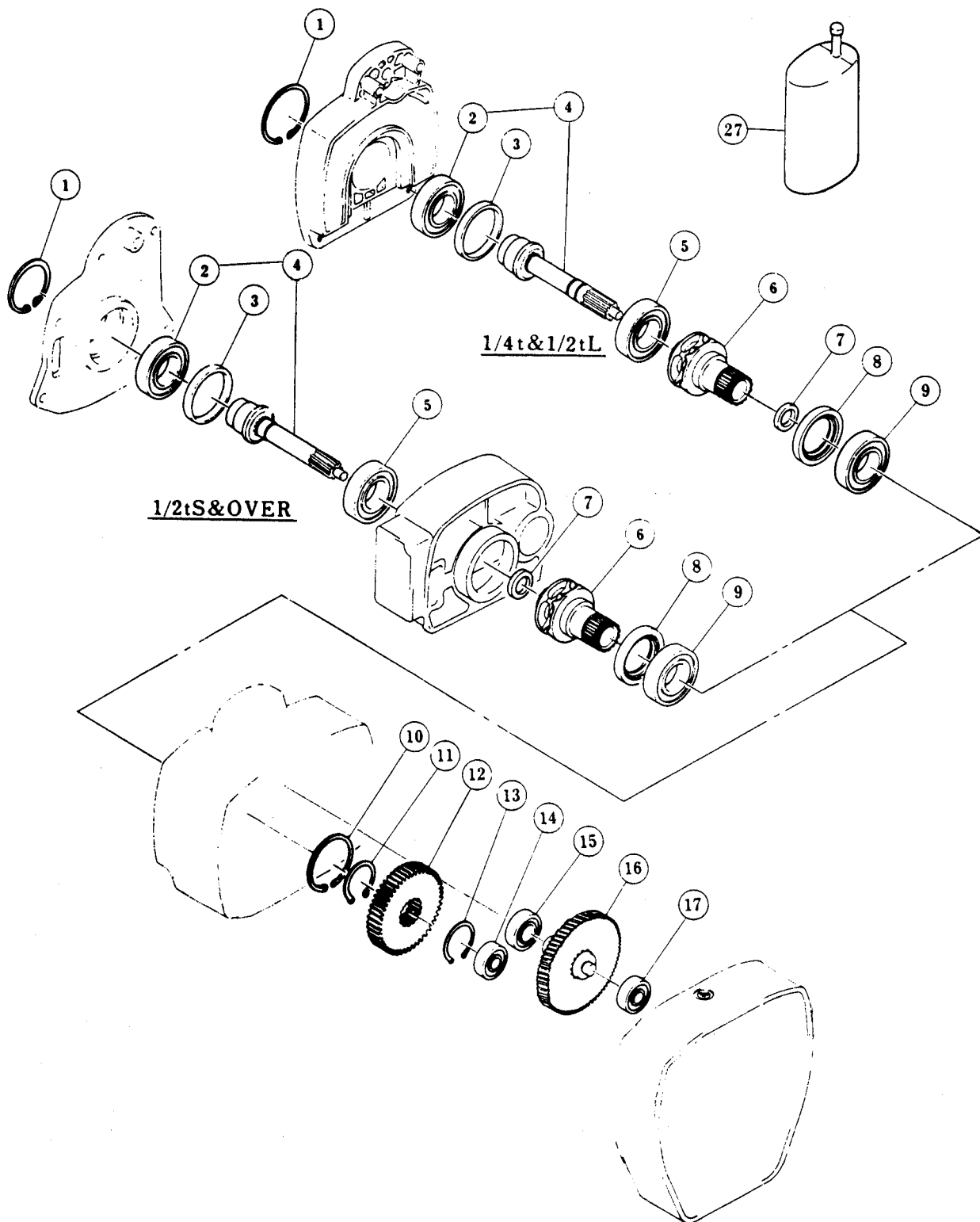


Fig No	Part No	Part Name	Parts per Hoist	Capacity													
				¼	½-L	½-S	1-L	1-S	2-L	1½	3	2-S	2½	5	7 ½		
1	E3S208	Snap ring	1														
	E3S209																
*	E3S6220	Pinion complete set	1														
2	E3S205	Ball bearing	1														
3	E3S206	Collar B	1														
5	E3S230	Ball bearing	1														
6	E3S228	Load sheave	1														
7	E3S221	Oil seal	1														
8	E3S232	Oil seal	1														
9	E3S231	Ball bearing	1														
10	E3S207	Snap ring	1														
11	E3S233	Snap ring	1														
* (12)	E3S227	Load gear	1														
13	E3S233	Snap ring	1														
14	E3S222	Ball bearing	1														
15	E3S226	Ball bearing	1														
* (16)	E3S5223	Gear #2 assembly	1														
17	E3S225	Ball bearing	1														
27	E3S901	Gear oil	1														

Circled Fig No. shows a part exclusive for ES3 models.

\*Part for 1/2-S or larger is exclusive for ES3 model.

# C CHAINING PARTS

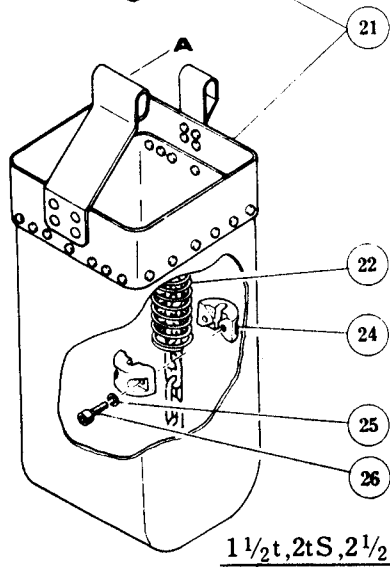
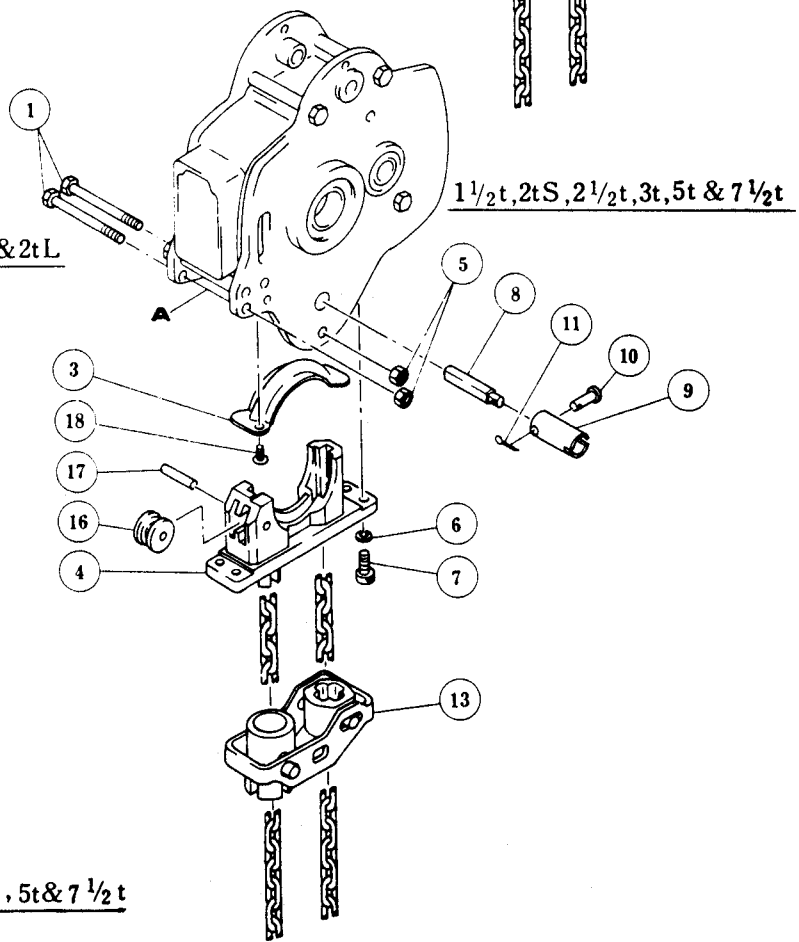
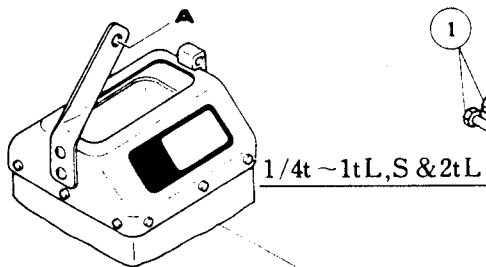
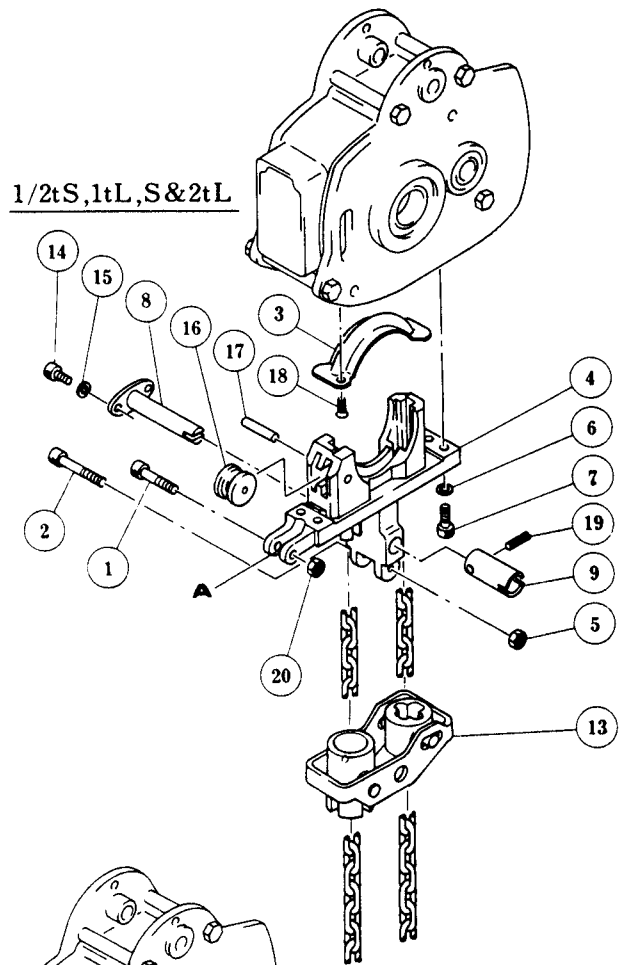
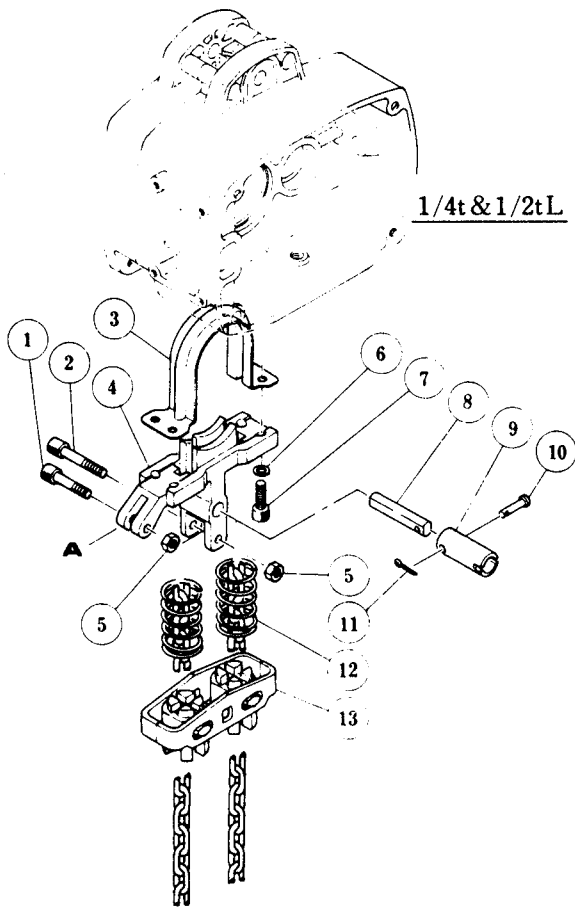
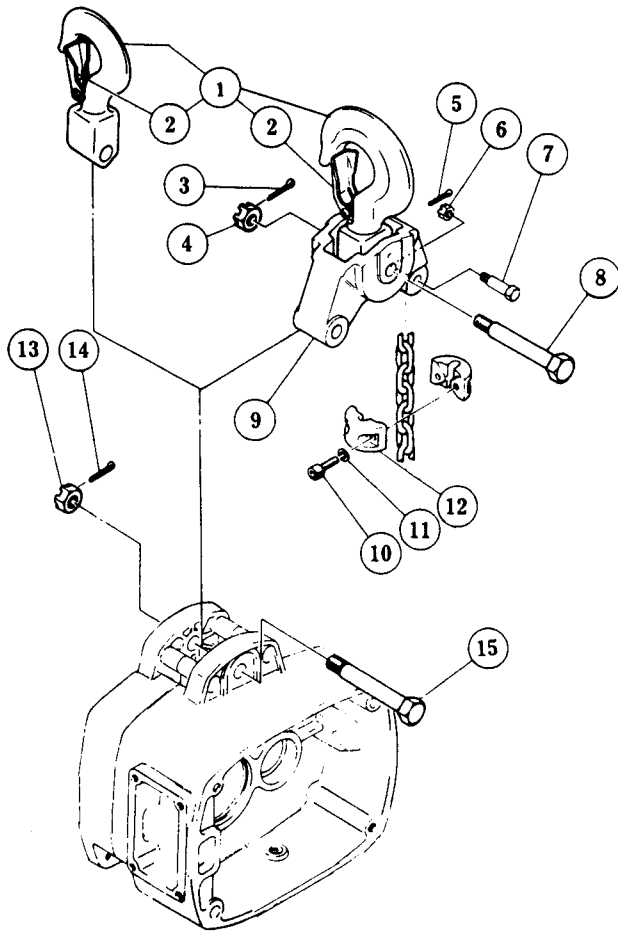


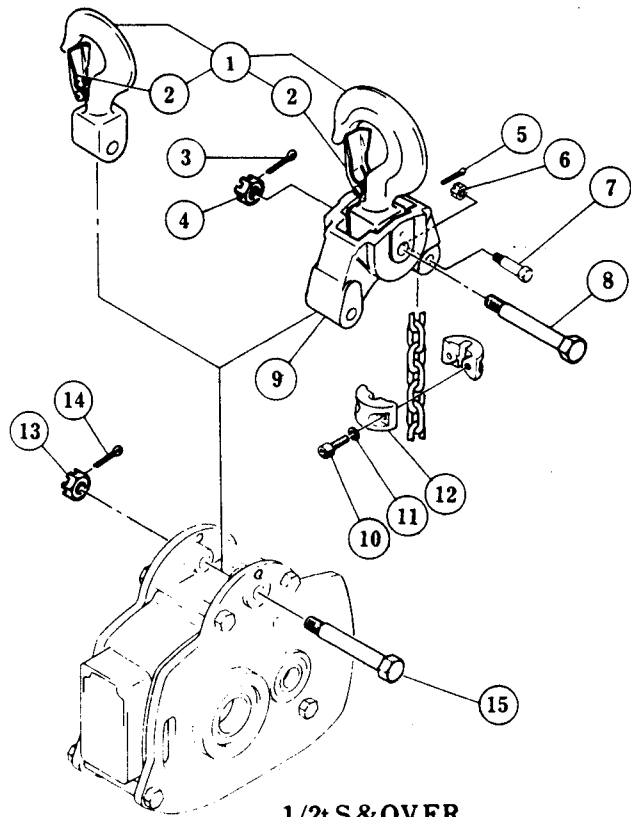


Fig No	Part No	Part Name	Parts per Hoist	Capacity													
				¼	½-L	½-S	1-L	1-S	2-L	1 ½	3	2-S	2 ½	5	7 ½		
1	E3S854	Socket bolt	1														
		Bolt	2														
2	E3S856	Socket bolt	1														
3	E3S402	Chain guide B	1														
4	E3S401	Chain guide A	1														
5	E3S855	U nut	2														
			1														
6	E3S452	Spring washer	4														
7	E3S461	Socket bolt	4														
8	E3S406	Limit lever pin	1														
	E3S5406	Limit lever pin assembly	1														
9	E3S407	Lever pin coupling	1														
10	E3S408	Coupling pin	1														
11	E3S453	Split pin	1														
12	E3S410	Guide spring	2														
13	E3S5405	Limit lever assembly	1														
14	E3S464	Socket bolt	2														
15	E3S465	Spring washer	2														
16	E3S403	Guide roller	1														
17	E3S404	Roller pin	1														
18	E3S463	Flat head machine screw	2														
		Machine screw with spring washer															
19	E3S451	Spring pin	1														
20	E3S857	U nut	1														
21	E3S5830	Chain container L	1														
	E3S5831	Chain container S															
22	E3S047	Chain spring	1														
24	E3S045	Stopper	2														
25	E3S087	Spring washer	2														
26	E3S086	Socket bolt	2														

# D HOOK PARTS



1/4t & 1/2tL



1/2t S & OVER

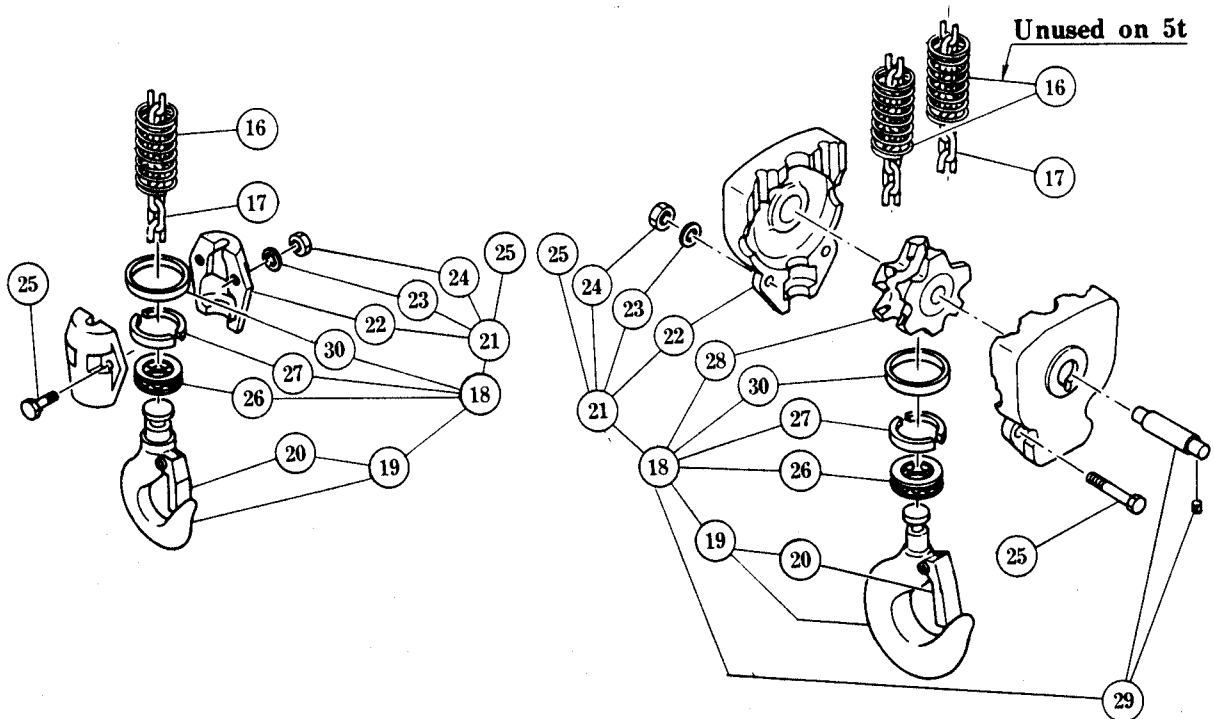


Fig No	Part No	Part Name	Parts per Hoist	Capacity											
				¼	½-L	½-S	1-L	1-S	2-L	1½	3	2-S	2½	5	
1	E3S1001	Top hook assembly	1												
2	E3S1071	Hook,latch assembly	1												
3	E3S089	Split pin	1	—		—		—		—			—		
4	E3S088	Slotted nut	1	—		—		—		—			—		
5	E3S096	Split pin	1	—		—		—		—			—		
6	E3S049	Slotted nut	1	—		—		—		—			—		
7	E3S041	Chain pin	1	—		—		—		—			—		
8	E3S006	Top pin L	1	—		—		—		—			—		
9	E3S005	Connection yoke	1	—		—		—		—			—		
10	E3S086	Socket bolt	2	—		—		—		—			—		
11	E3S087	Spring washer	2	—		—		—		—			—		
12	E3S045	Stopper	2	—		—		—		—			—		
13	E3S161	Slotted nut	1												
14	E3S162	Split pin	1												
15	E3S117	Top pin	1												
16	E3S047	Chain spring	1		—		—		—		—				
			2	—		—		—		—		—			
17	E3S840	Load chain	1												
18	E3S1021	Bottom hook complete set	1												
19	E3S2021	Bottom hook assembly	1												
20	E3S1071	Hook latch assembly	1												
21	E3S5032	Bottom yoke assembly	1												
22		Bottom yoke	2												
23		Spring washer	2									—			—
			3										—		
24		Nut	2									—			—
			3											—	
25		High strength bolt	2		—		—		—		—				—
			2	—		—		—		—		—			—
			3											—	
26	E3S022	Thrust bearing	1												
27	E3S027	Hook stopper	2												
28	E3S1051	Idle sheave assembly	1	—		—		—		—			—		
29	E3S5054	Bottom shaft assembly	1	—		—		—		—			—		
30	E3S026	Thrust collar A	1												

# E TOP SUSPENSION PLATE PARTS FOR 7.5t

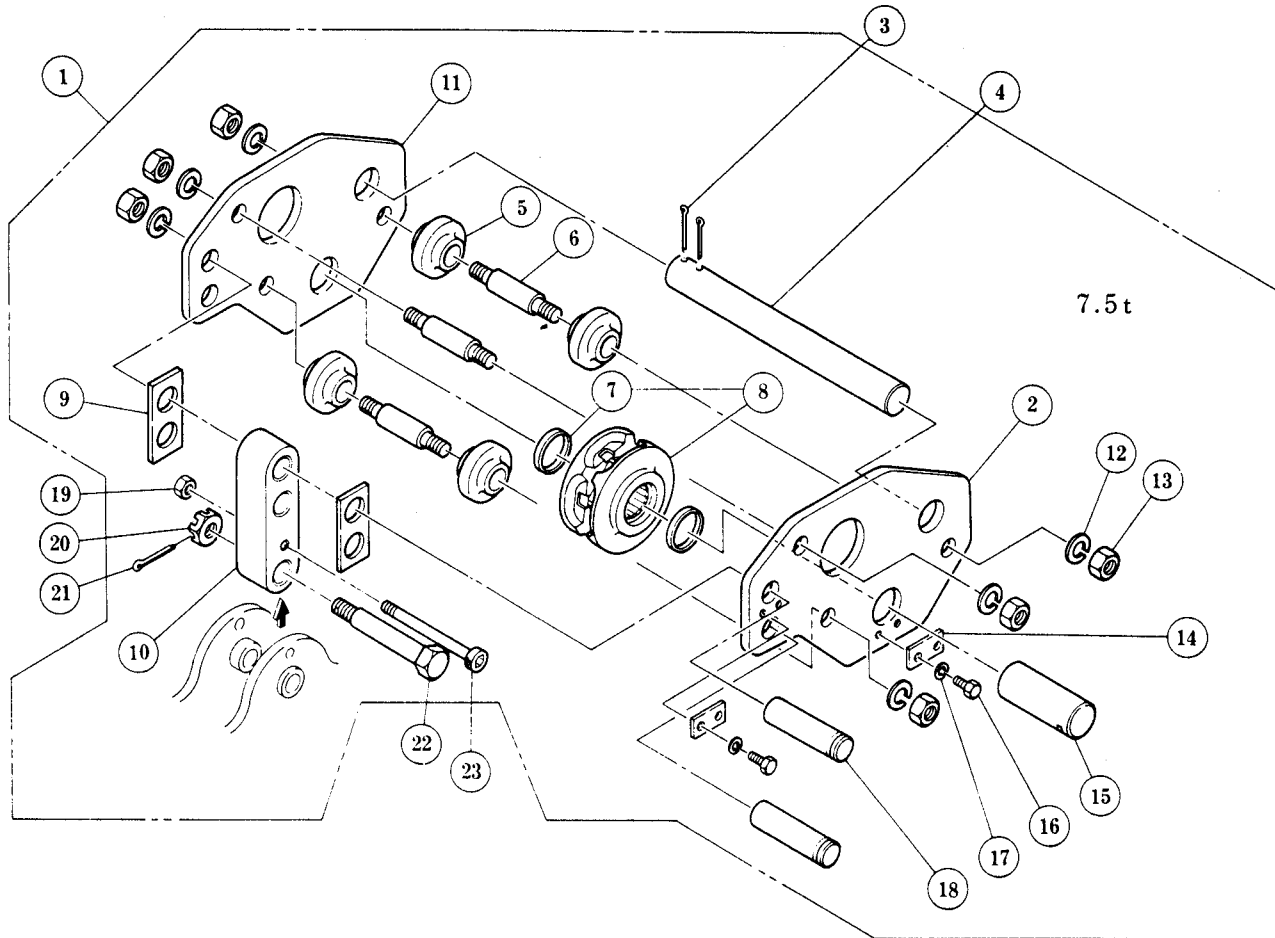


Fig No	Part No	Part Name	Parts per Hoist	Capacity
				7 ½
1	E3S1003	Top suspension plate assembly	1	
2	E3S003	Top suspension plate A	1	
5	E3S062	Guide roller	4	
6	E3S007	Top stay bolt	3	
8	E3S1051	Top idle sheave assembly	1	
7	E3S055	Dust proof seal	2	
9	E3S009	Spacer	2	
10	E3S005	Suspender	1	
11	E3S004	Top suspension plate B	1	
12	E3S082	Spring washer	6	
13	E3S081	Nut	6	
14	E3S056	Shaft stopper	2	
15	E3S053	Top shaft	1	
16	E3S083	Bolt	4	
17	E3S084	Spring washer	4	
18	E3S008	Suspender shaft	2	
3	E3S089	Split pin	2	
4	E3S010	Stopper shaft	1	
19	E3S086	U Nut	1	
20	E3S161	Slotted nut	1	
21	E3S162	Split pin	1	
22	E3S117	Top pin	1	
23	E3S085	Socket bolt	1	

# F BOTTOM HOOK PARTS

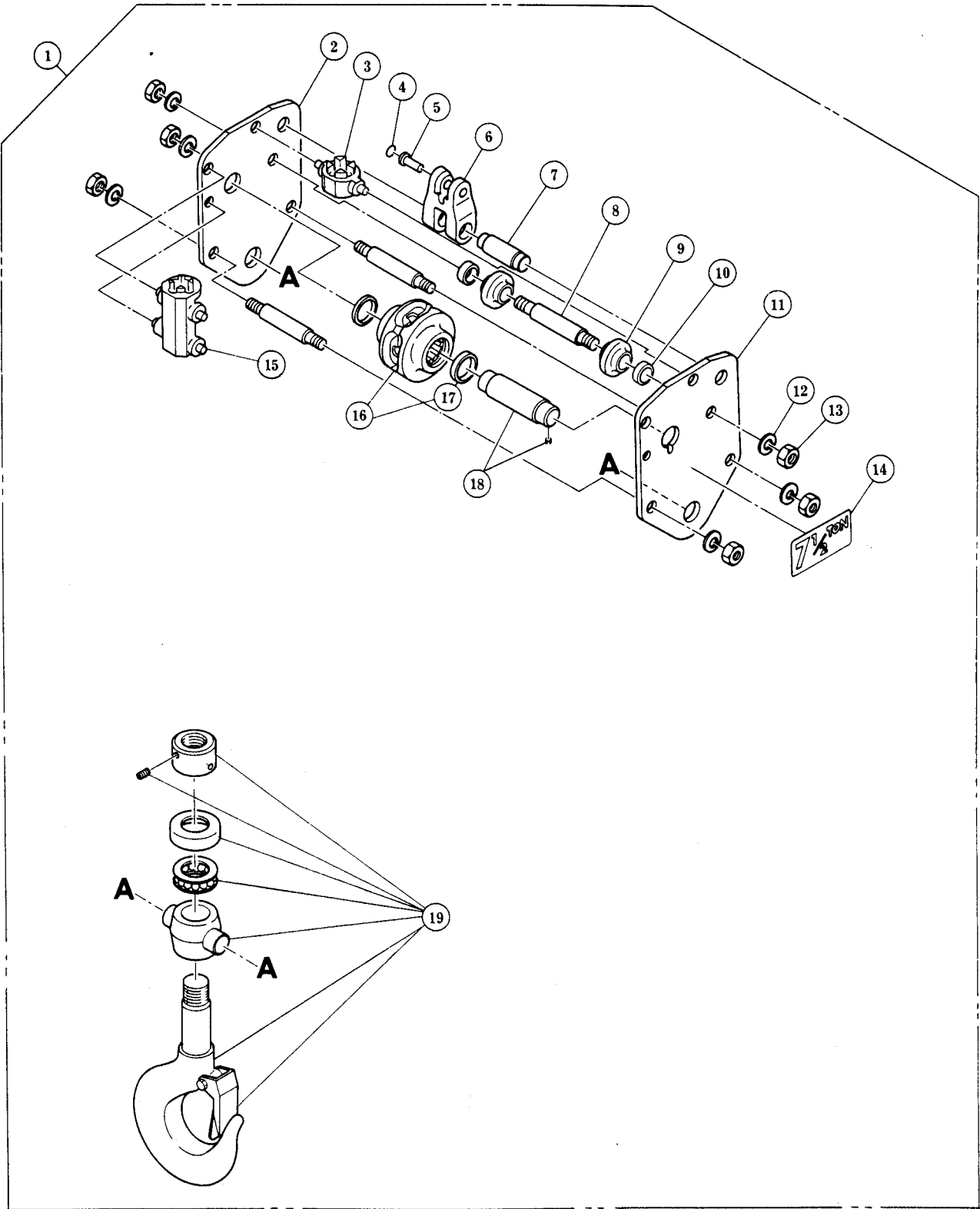
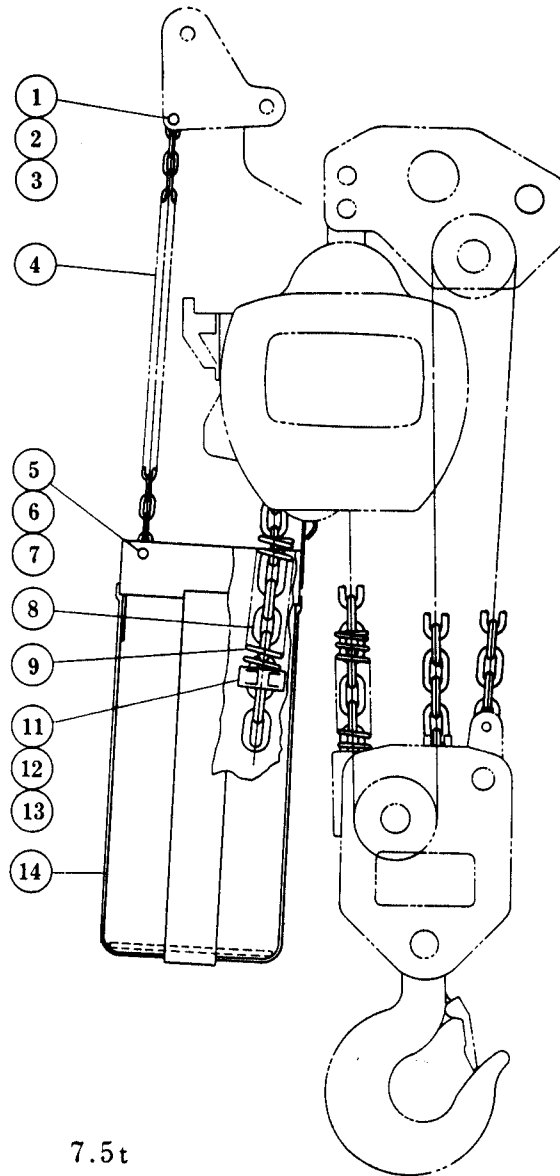


Fig No	Part No	Part Name	Parts per Hoist	Capacity
				7 ½
1	E3S1021	Bottom hook complete set	1	
2	E3S035	Bottom suspension plate B	1	
3	E3S067	Bottom cross guide	1	
4	E3S092	Snap ring	1	
5	E3S041	Chain pin	1	
6	E3S039	Chain holder	1	
7	E3S040	Chain holder pin	1	
8	E3S038	Bottom stay bolt	3	
9	E3S062	Guide collar	2	
10	E3S065	Bottom collar	2	
11	E3S034	Bottom suspension plate A	1	
12	E3S082	Spring washer	6	
13	E3S081	Nut	6	
14	E3S069	Name plate A	1	
15	E3S066	Bottom chain guide	1	
16	E3S1052	Bottom idle sheave assembly	1	
17	E3S055	Dust proof seal	2	
18	E3S5054	Bottom shaft assembly	1	
19	E3S2021	Bottom hook assembly	1	

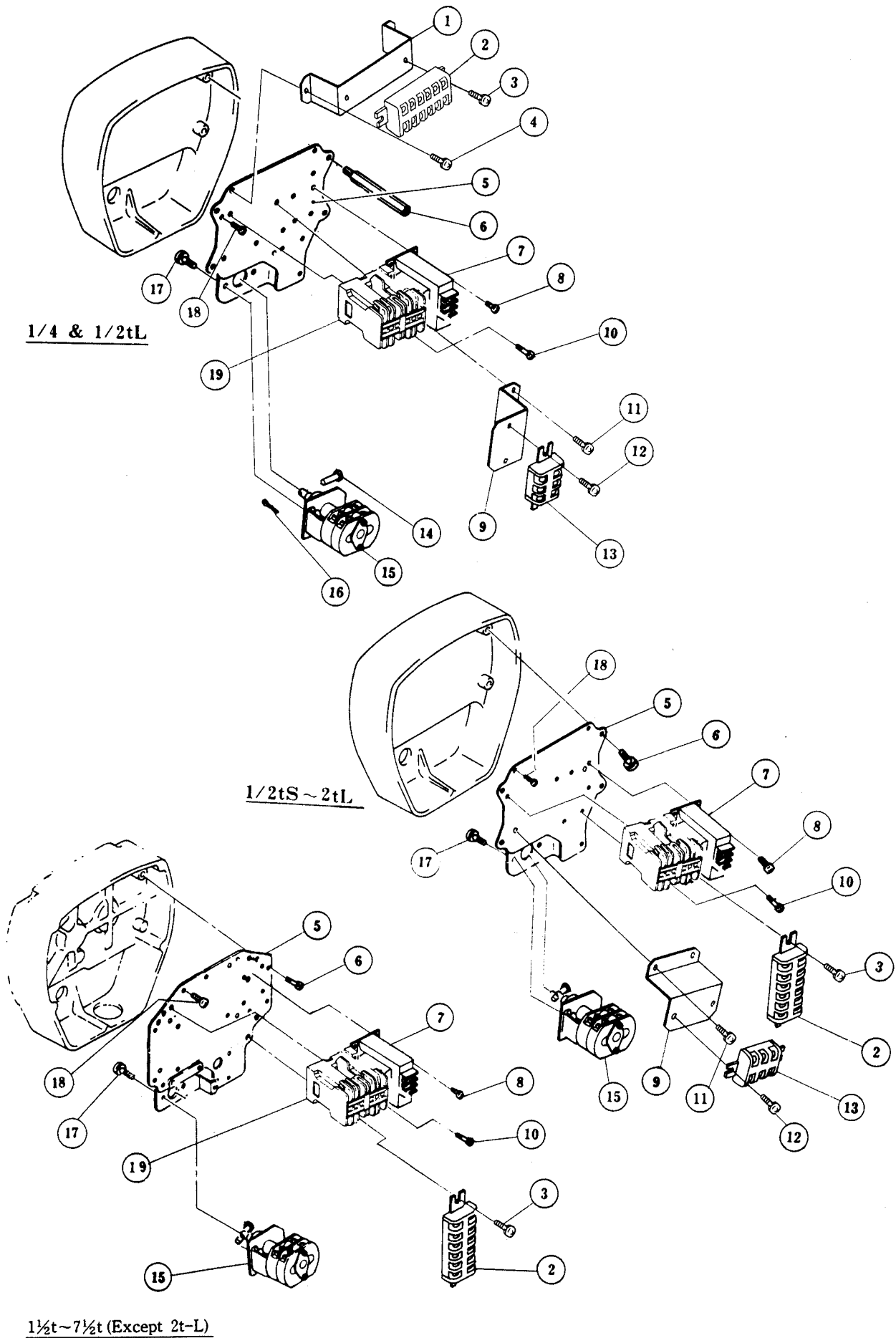
# G CHAIN CONTAINER PARTS



7.5t

Fig No	Part No	Part Name	Nos per Hoist	Capacity
				7 ½
1	E3S872	Socket bolt	2	
2	E3S857	U nut	2	
3	E3S874	Washer	2	
4	E3S875	Container chain	2	
5	E3S871	Socket bolt	2	
6	E3S857	U nut	2	
7	E3S874	Washer	2	
8	E3S840	Load chain	1	
9	E3S047	Chain spring	2	
11	E3S045	Stopper	2	
12	E3S090	Socket bolt	2	
13	E3S087	Spring washer	2	
14	E3S5830	Chain container S	1	
	E3S5831	Chain container L	1	

# H ELECTRIC PARTS 220/440V 60Hz



1/4 & 1/2tL

1/2tS~2tL

1 1/2t~7 1/2t (Except 2t-L)



Fig No	Part No	Part Name	Parts per Hoist	Capacity													
				¼	½-L	½-S	1-L	1-S	2-L	1½	3	2-S	2½	5	7½		
1	E3S325	Terminal panel A	1														
2	E3S348	Terminal 6P	1														
3	E3S349	Machine screw with spring washer	2														
4	E3S349	Machine screw with spring washer	2														
5	E3S5601	Plate assembly	1														
6	E3S602	Stay bolt	4														
	E3S650	Machine screw with spring washer	4														
7	E3S616	Transformer	1														
8	E3S660	Machine screw with spring washer	4														
9	E3S326	Terminal panel B	1														
10	E3S662	Machine screw with spring washer	4														
			3														
11	E3S349	Machine screw with spring washer	2														
12	E3S349	Machine screw with spring washer	2														
13	E3S347	Terminal 3P	1														
14	E3S408	Coupling pin	1														
15	E3S2619	Limit switch assembly	1														
16	E3S453	Split pin	1														
17	E3S664	Machine screw with spring washer	2														
18	E3S670	Machine screw with spring washer	1														
19	E3S617	Electromagnetic contactor	2														
			1														

# I ELECTRIC PARTS 575 V 60Hz

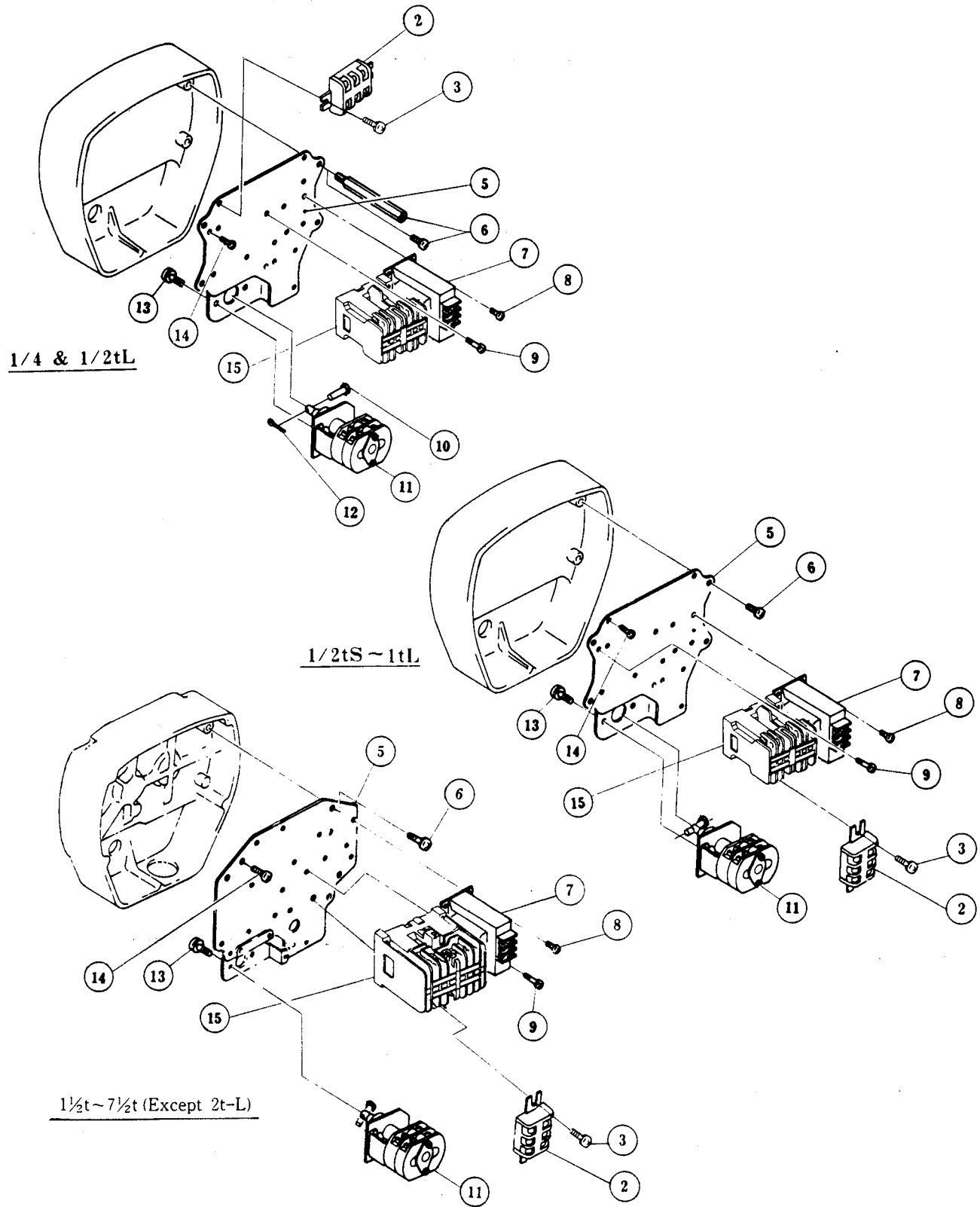
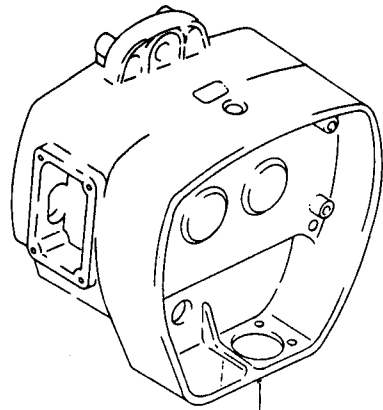
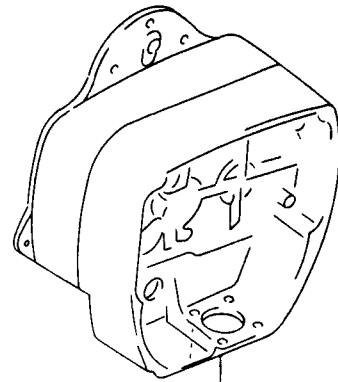
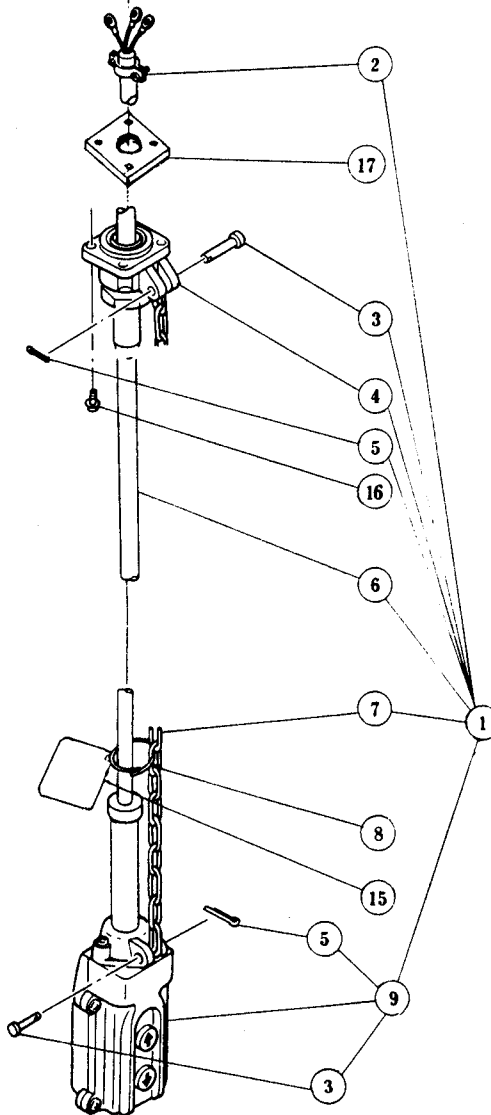


Fig No	Part No	Part Name	Parts per Hoist	Capacity													
				¼	½-L	½-S	1-L	1-S	2-L	1½	3	2-S	2½	5	7½		
2	E3S347	Terminal 3P	1														
3	E3S349	Machine screw with spring washer	2														
5	E3S5601	Plate assembly	1														
6	E3S602	Stay bolt	4														
	E3S650	Machine screw with spring washer	4														
7	E3S616	Transformer	1														
8	E3S660	Machine screw with spring washer	4														
9	E3S662	Machine screw with spring washer	4														
			3														
10	E3S408	Coupling pin	1														
11	E3S2619	Limit switch assembly	1														
12	E3S453	Split pin	1														
13	E3S664	Machine screw with spring washer	2														
14	E3S670	Machine screw with spring washer	1														
15	E3S 617	Electromagnetic contactor	2														
			1														

# J CONTROL STATION PARTS



1/4t ~ 1tL, S & 2tL



1 1/2t, 2tS, 2 1/2t, 3t, 5t & 7 1/2t

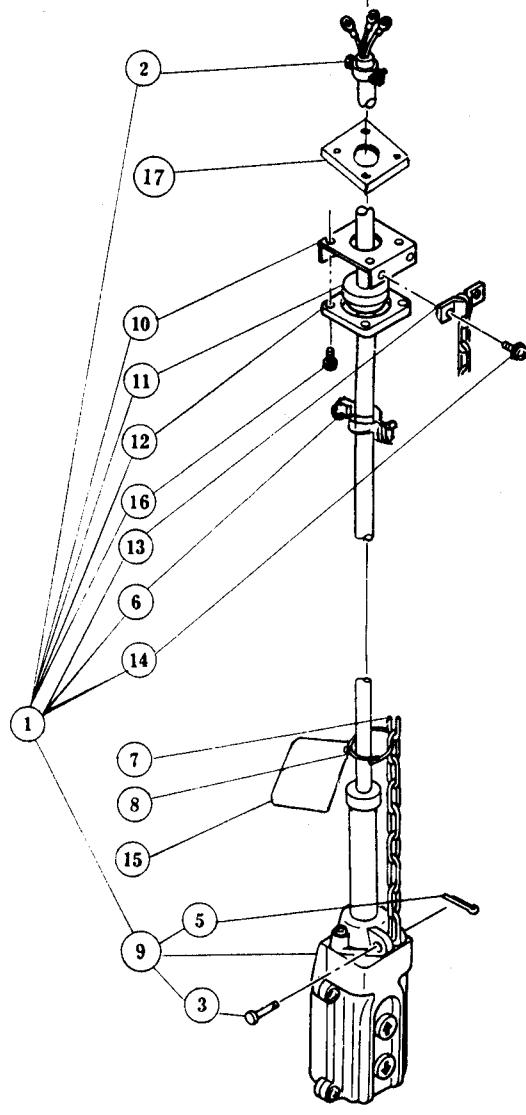


Fig No	Part No	Part Name	Parts per Hoist	Capacity													
				¼	½-L	½-S	1-L	1-S	2-L	1½	3	2-S	2½	5	7 ½		
1	E3S1607	2 Push button cord complete set	1														
2	E3S343	Cord clamp 14 assembly	1														
	E3S1343		2														
3	E3S628	Cord chain pin	1														
4	E3S1340	Cord holder A assembly	1														
5	E3S671	Split pin	1														
6	E3S607	Push button cord 3C	1														
7	E3S626	Cord chain	1														
8	E3S629	Cord ring	5														
9	E3S1615	2 Push button switch assembly	1														
3	E3S628	Cord chain pin	1														
	E3S671	Split pin	1														
10	E3S342	Holder plate U	1														
11	E3S341	Packing 16	1														
12	E3S340	Cord holder 42	1														
13	E3S611	Cord chain stopper	1														
14	E3S659	Machine screw with spring washer	2														
15	E3S815	Tag S	1														
16	E3S656	Machine screw with spring washer	4														
⑰	E3S609	Socket holder packing B	1														

# K POWER SUPPLY PARTS

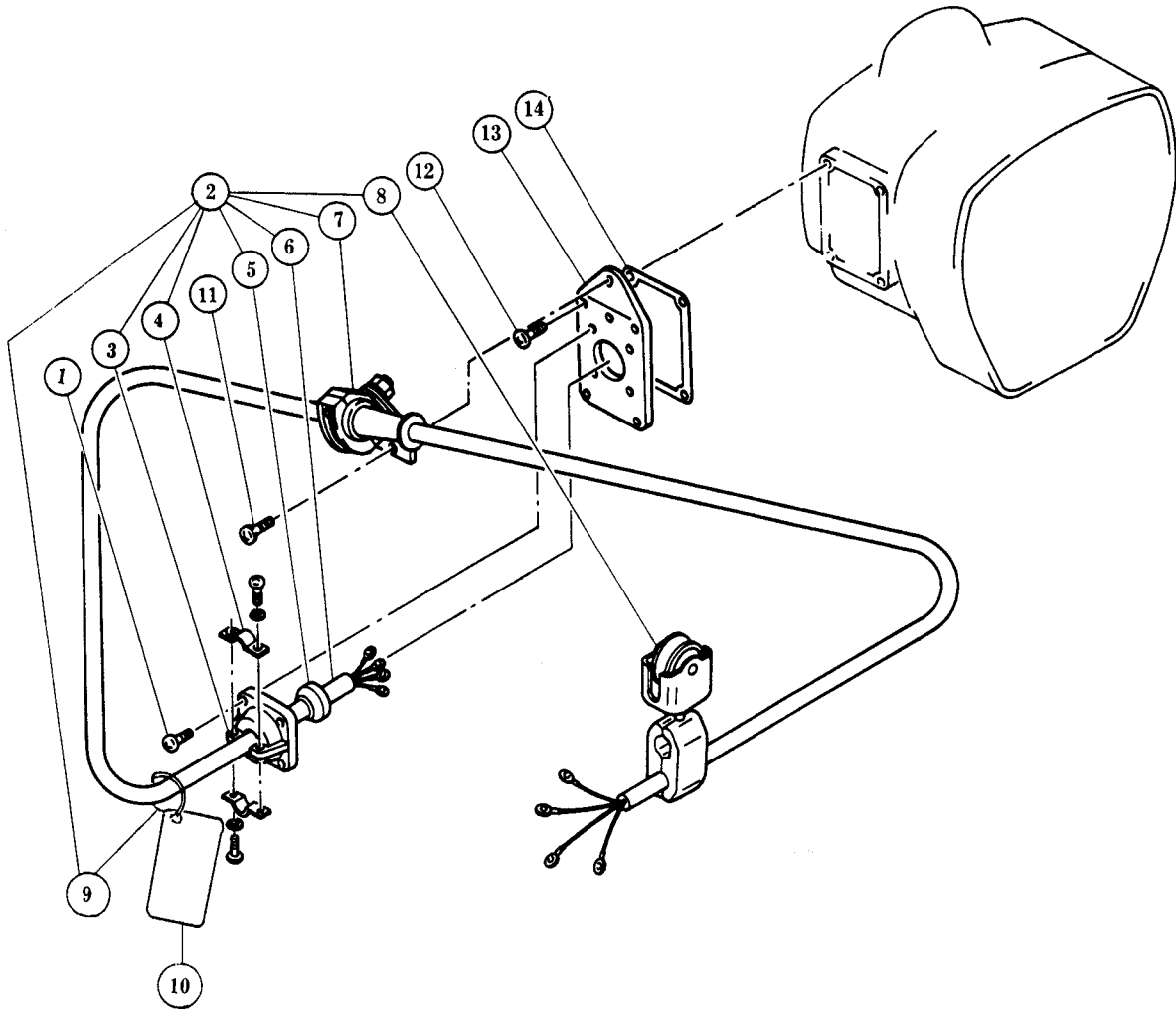


Fig No	Part No	Part Name	Parts per Hoist	Capacity													
				¼	½-L	½-S	1-L	1-S	2-L	1½	3	2-S	2½	5	7 ½		
1	E3S311	Machine screw with spring washer	4														
2	E3S1521	Power supply cable complete set	1														
3	E3S321	Cable holder M	1														
4	E3S1323	Cable clamp 14 assembly	1														
5	E3S322	Cable packing 13	1														
6	E3S521	Power Supply cable 4C	1														
7	E3S1822	Cable clamp arm assembly	1														
8	E3S1527	Cable hanger assembly	3														
			6														
9	E3S629	Cord ring	1														
10	★ 1	Tag F	1														
11	E3S852	Machine screw with spring washer	2														
12	E3S331	Machine screw with spring washer	4														
13	E3S320	Terminal cover	1														
14	E3S119	Socket holder packing A	1														

★1 : ES814CV ; 220/440 V, ES814 CK ; 575 V



**KITO** CORP.

3-37-4, Yoyogi, Shibuya-ku,

Tokyo 151-0053, Japan

Tel. : 03-5371-7341

Fax. : 03-5371-7349

Tlx. : 222-2942 KITO J

E-mail : [kitoexpt@mtg.biglobe.ne.jp](mailto:kitoexpt@mtg.biglobe.ne.jp)

URL <http://www.kito.co.jp>