



**ES SERIES
ELECTRIC CHAIN HOIST
MODEL ES3 7.5t TO 20t**

**PARTS
LIST**

IMPORTANT

When ordering replacement parts, please specify the following points:

1. Hoist capacity.
2. Model number in name plate.
3. Correct part names and numbers.
4. Lineal length of push button cord, chain lift or power supply cable.

PLATE SUSPENSION TYPE HOIST

A TOP SUSPENSION PLATE PARTS

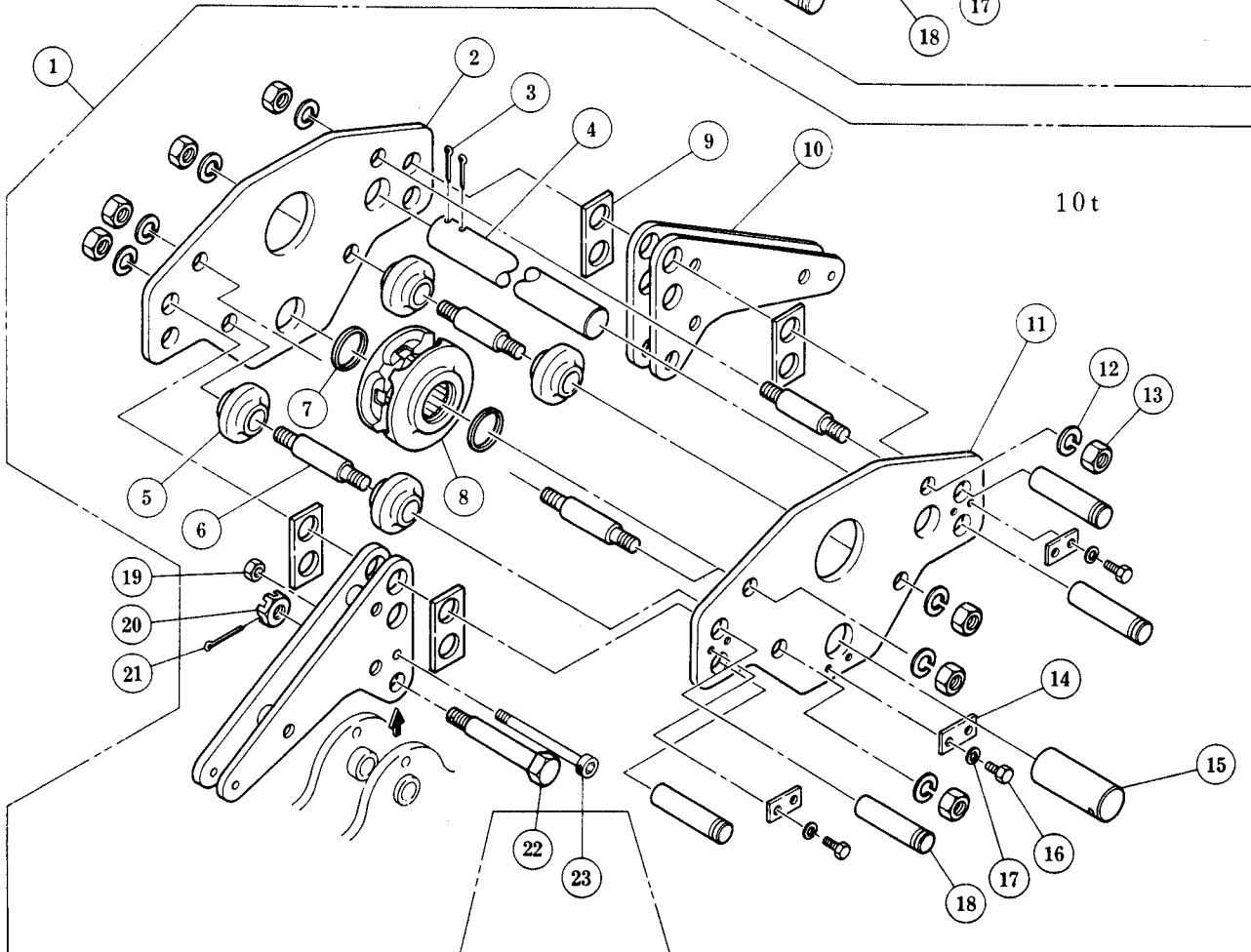
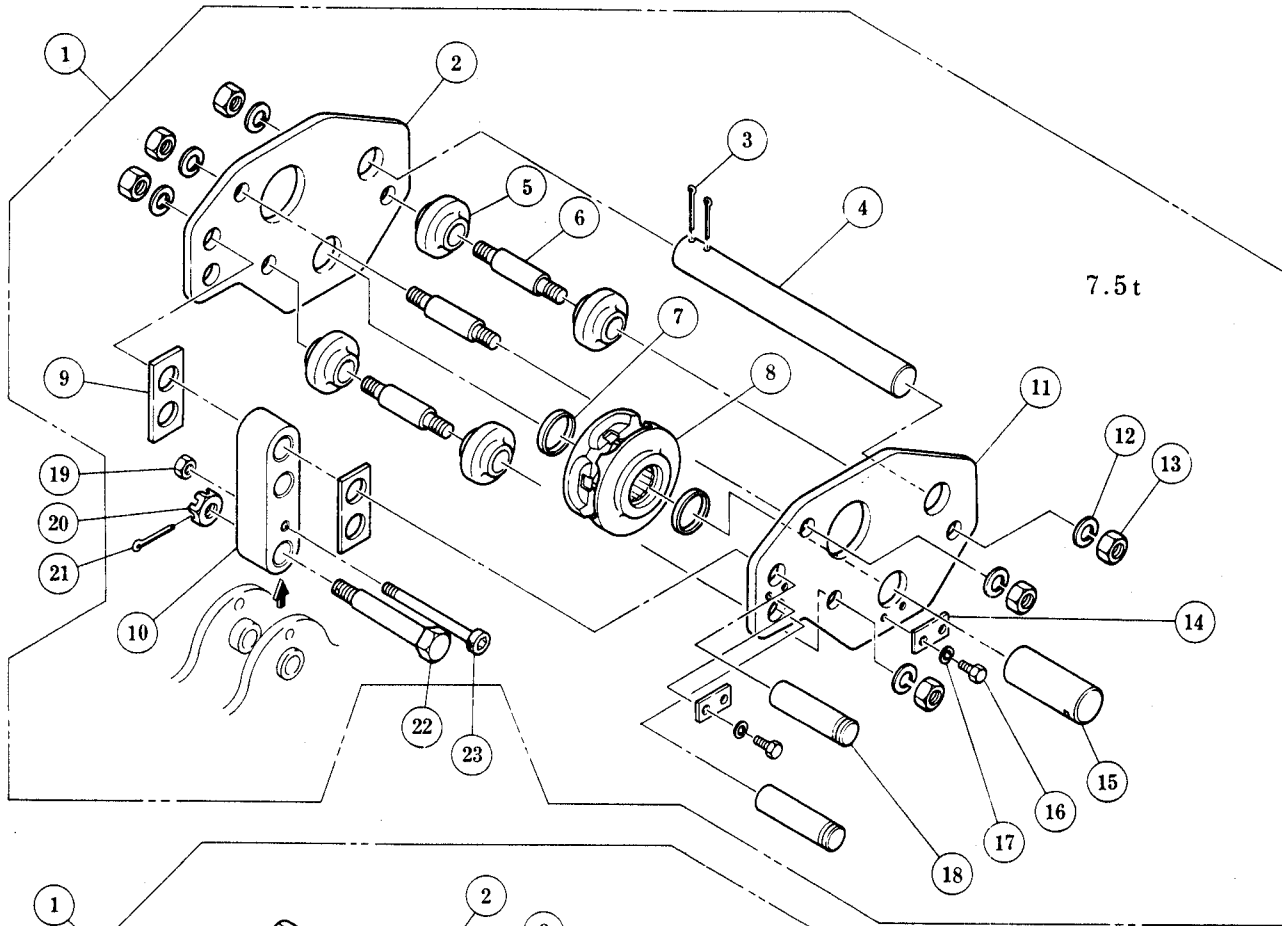


Fig No	Part No	Part Name	Nos per Hoist		Capacity	
			7.5t	10t	7.5t	10t
1	E6S1003	Top Suspension Plate Assembly	1			
2	E6S003	Top Suspension Plate A	1			
3	E6S089	Split Pin	2			
4	E6S010	Stopper Shaft	1			
	E7S019		1 (W)			
5	E6S062	Guide Roller	4			
6	E6S007	Top Stay Bolt	3	4		
7	E6S055	Shield	2			
8	E6S1051	Top Idle Sheave Assembly	1			
9	E6S009	Spacer	2	4		
10	E6S005	Suspender	1	2		
11	E6S004	Top Suspension Plate B	1			
12	E6S082	Spring Washer	6	8		
13	E6S081	Nut	6	8		
14	E6S056	Shaft Stopper	2	3		
15	E6S053	Top Shaft	1			
16	E6S083	Bolt	4	6		
17	E6F854	Spring Washer	4	6		
18	E6S008	Suspender Shaft	2	4		
19	ES066	U Nut	1	2		
20	ES161	Slotted Nut	1	2		
21	ES162	Split Pin	1	2		
22	ES117	Top Pin	1	2		
23	ES065	Socket Bolt	1	2		

(W) indicates the quantity for wide flange 221 to 305mm type as option

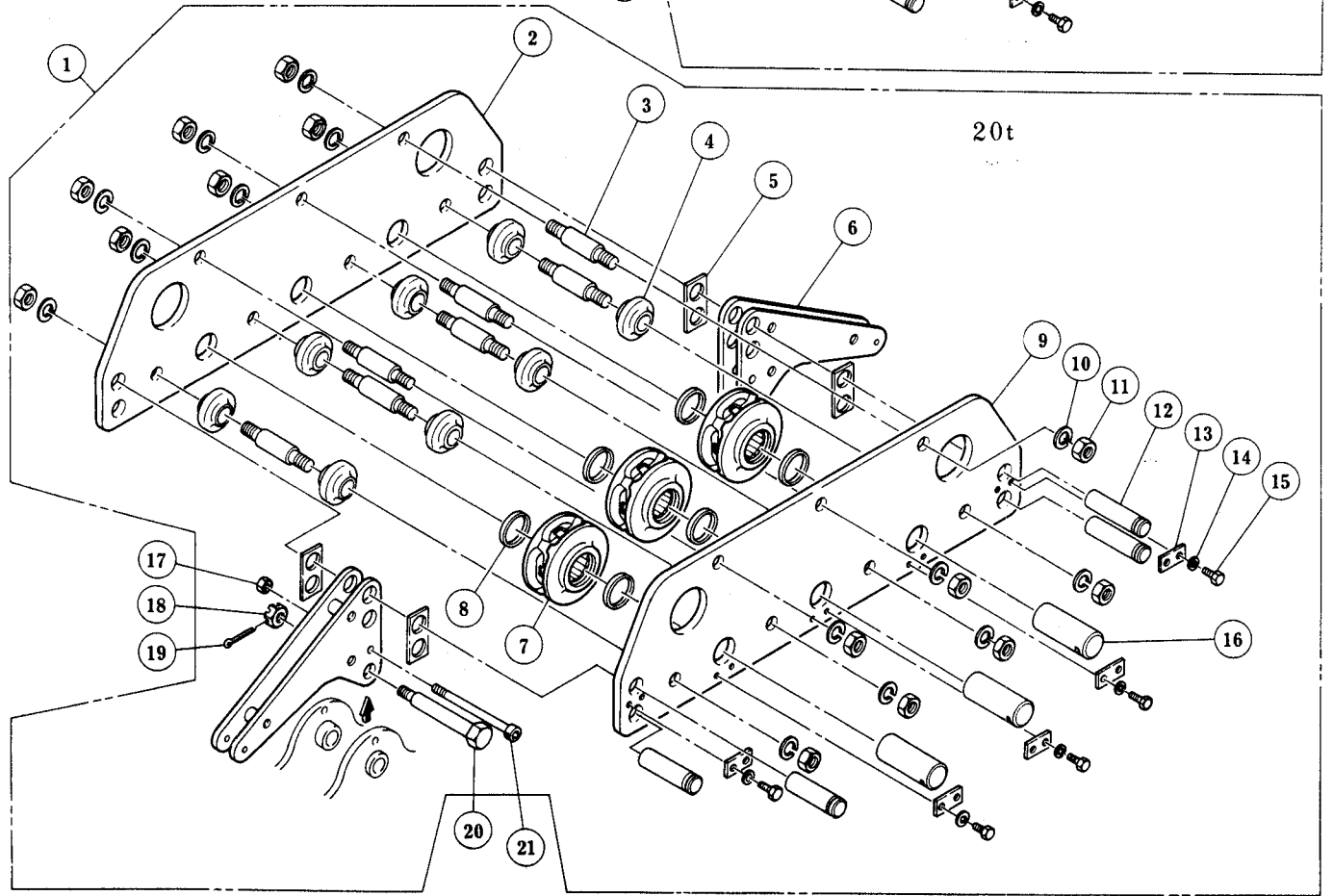
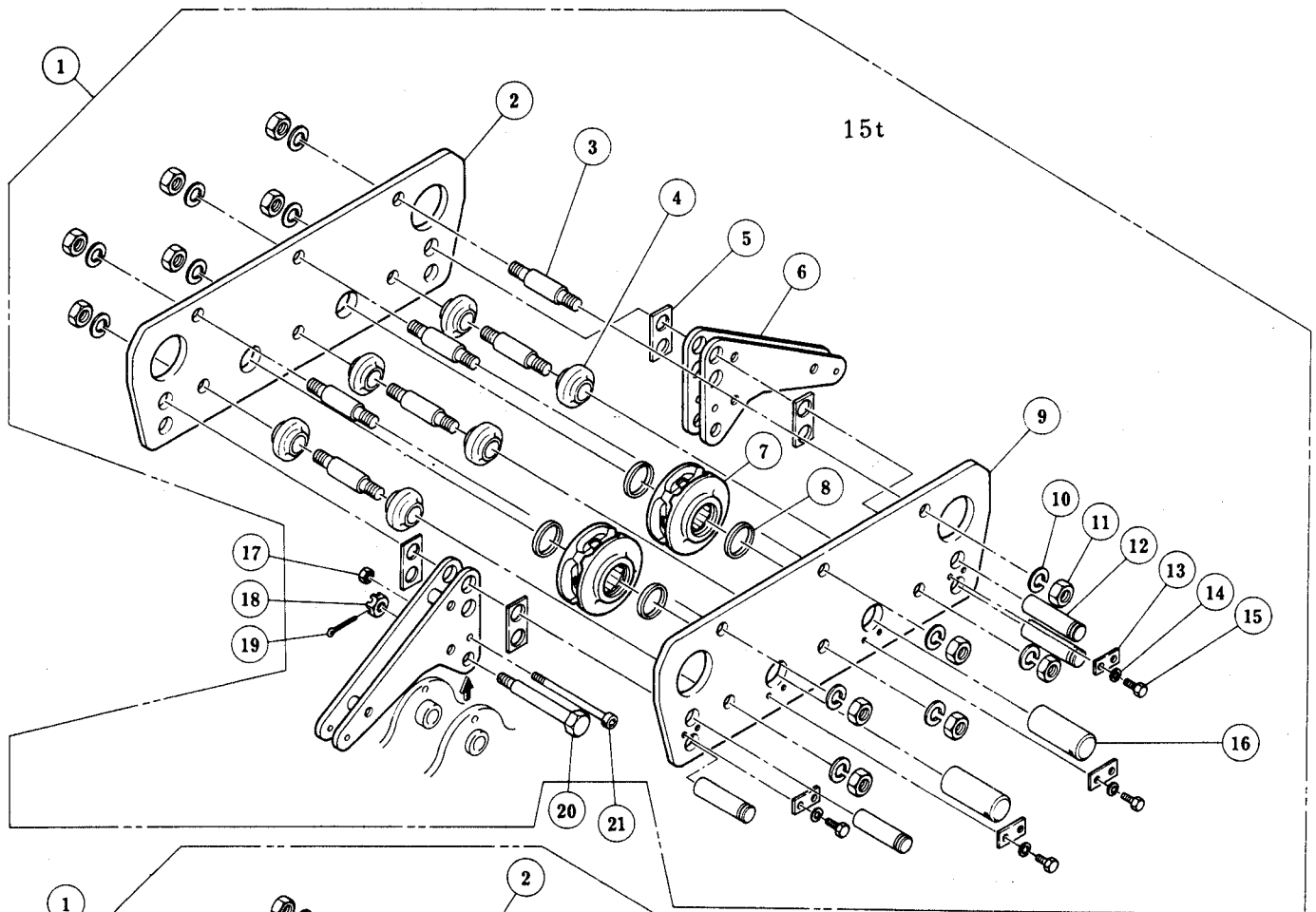


Fig No	Part No	Part Name	Nos per Hoist		Capacity	
			15 ^t	20 ^t	15 ^t	20 ^t
1	E6S1003	Top Suspension Plate Assembly	1			
2	E6S003	Top Suspension Plate A	1			
3	E6S007	Top Stay Bolt	6	7		
4	E6S062	Guide Roller	6	8		
5	E6S009	Spacer	4	4		
6	E6S005	Suspender	2			
7	E6S1051	Top Idle Sheave Assembly	2	3		
8	E6S055	Shield	4	6		
9	E6S004	Top Suspension Plate B	1			
10	E6S082	Spring Washer	12	14		
11	E6S081	Nut	12	14		
12	E6S008	Suspender Shaft	4	4		
13	E6S056	Shaft Stopper	4	5		
14	E6S084	Spring Washer	8	10		
15	E6S083	Bolt	8	10		
16	E6S053	Top Shaft	2	3		
17	ES066	U Nut	2			
18	ES161	Slotted Nut	2			
19	ES162	Split Pin	2			
20	ES117	Top Pin	2			
21	ES065	Socket Bolt	2			

B BOTTOM HOOK PARTS

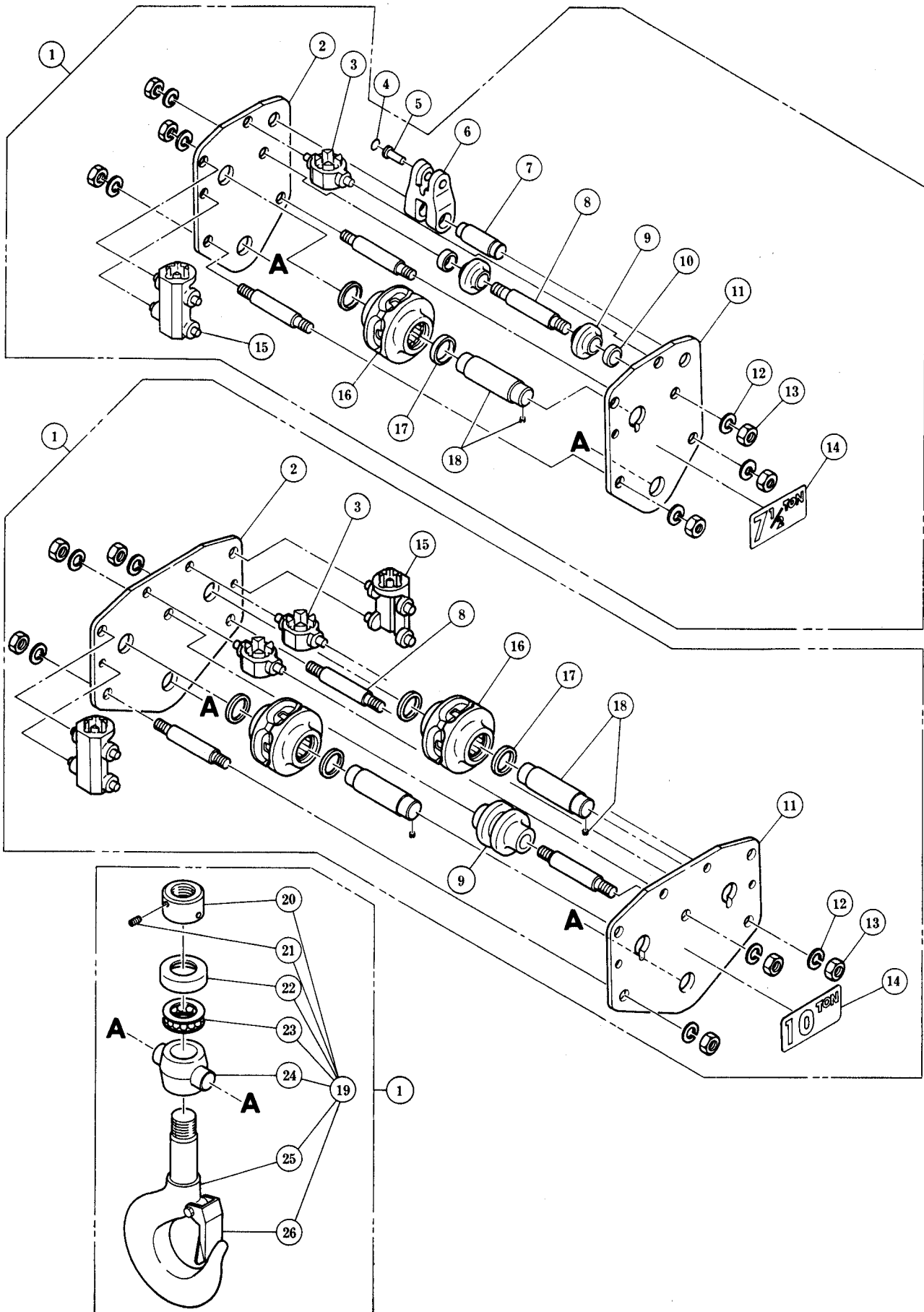


Fig No	Part No	Part Name	Nos per Hoist		Capacity	
			7.5 ^t	10 ^t	7.5 ^t	10 ^t
1	E6S1021	Bottom Hook Complete Set	1			
2	E6S035	Bottom Suspension Plate B	1			
3	E6S067	Bottom Cross Guide	1	2		
6	E6S039	Chain Holder	1			
7	E6S040	Chain Holder Pin	1			
8	E6S038	Bottom Stay Bolt	3			
9	E6S062	Guide Roller	2			
	E6S063	Bottom Guide Roller		1		
10	E6S065	Bottom Collar	2			
11	E6S034	Bottom Suspension Plate A	1			
12	E6S082	Spring Washer	6			
13	E6S081	Nut	6			
14	E6S069	Name Plate A	1			
15	E6S066	Bottom Chain Guide	1	2		
16	E6S1052	Bottom Idle Sheave Assembly	1	2		
17	E6S055	Shield	2	4		
18	E6S5054	Bottom Shaft Assembly	1	2		
19	E6S2021	Bottom Hook Assembly	1			
20	E6S024	Hook Nut	1			
21	E6S087	Stopper Screw	1			
22	E6S023	Bearing Cover	1			
23	E6S022	Thrust Bearing	1			
24	E6S030	Bottom Yoke	1			
25	E6S021	Bottom Hook	1			
26	E6S071	Hook Latch Assembly	1			
4	E6S092	Snap Ring	1			
5	E6S041	Chain Pin	1			

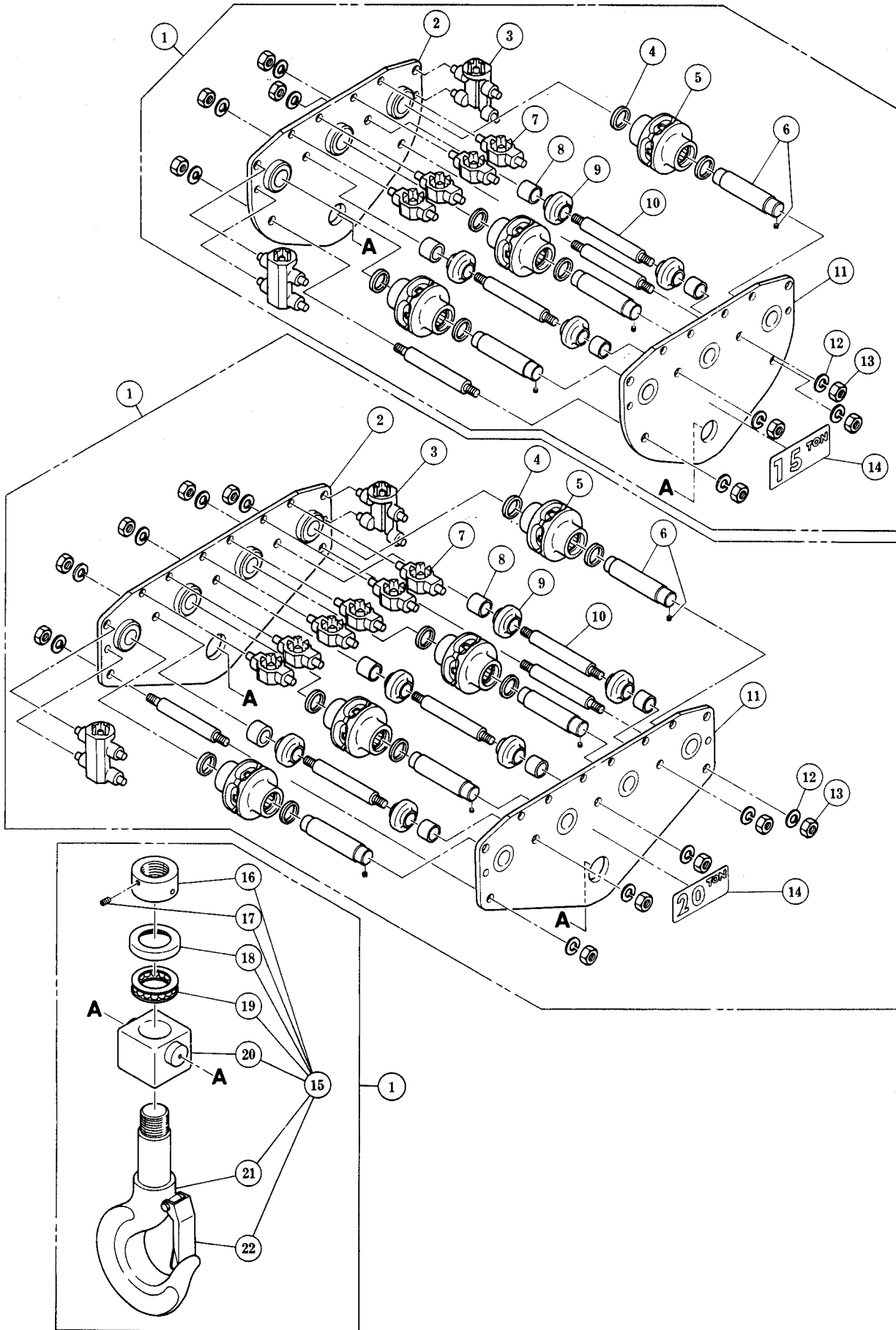


Fig No	Part No	Part Name	Nos per Hoist		Capacity	
			15 ^t	20 ^t	15 ^t	20 ^t
1	E6S1021	Bottom Hook Complete Set	1			
2	E6S5035	Bottom Suspension Plate B Assembly	1			
3	E6S066	Bottom Chain Guide	2			
4	E6S055	Shield	6	8		
5	E6S1052	Bottom Idle Sheave Assembly	3	4		
6	E6S5054	Bottom Shaft Assembly	3	4		
7	E6S067	Bottom Cross Guide	4	6		
8	E6S065	Bottom Collar	4	6		
9	E6S062	Guide Roller	4	6		
10	E6S038	Bottom Stay Bolt	4	5		
11	E6S5034	Bottom Suspension Plate A Assembly	1			
12	E6S082	Spring Washer	8	14		
13	E6S081	Nut	8	14		
14	E6S069	Name Plate A	1			
15	E6S2021	Bottom Hook Assembly	1			
16	E6S024	Hook Nut	1			
17	E6S087	Stopper Screw	1			
18	E6S023	Bearing Cover	1			
19	E6S022	Thrust Bearing	1			
20	E6S030	Bottom Yoke	1			
21	E6S021	Bottom Hook	1			
22	E6S071	Hook Latch Assembly	1			

C ELECTRIC PARTS

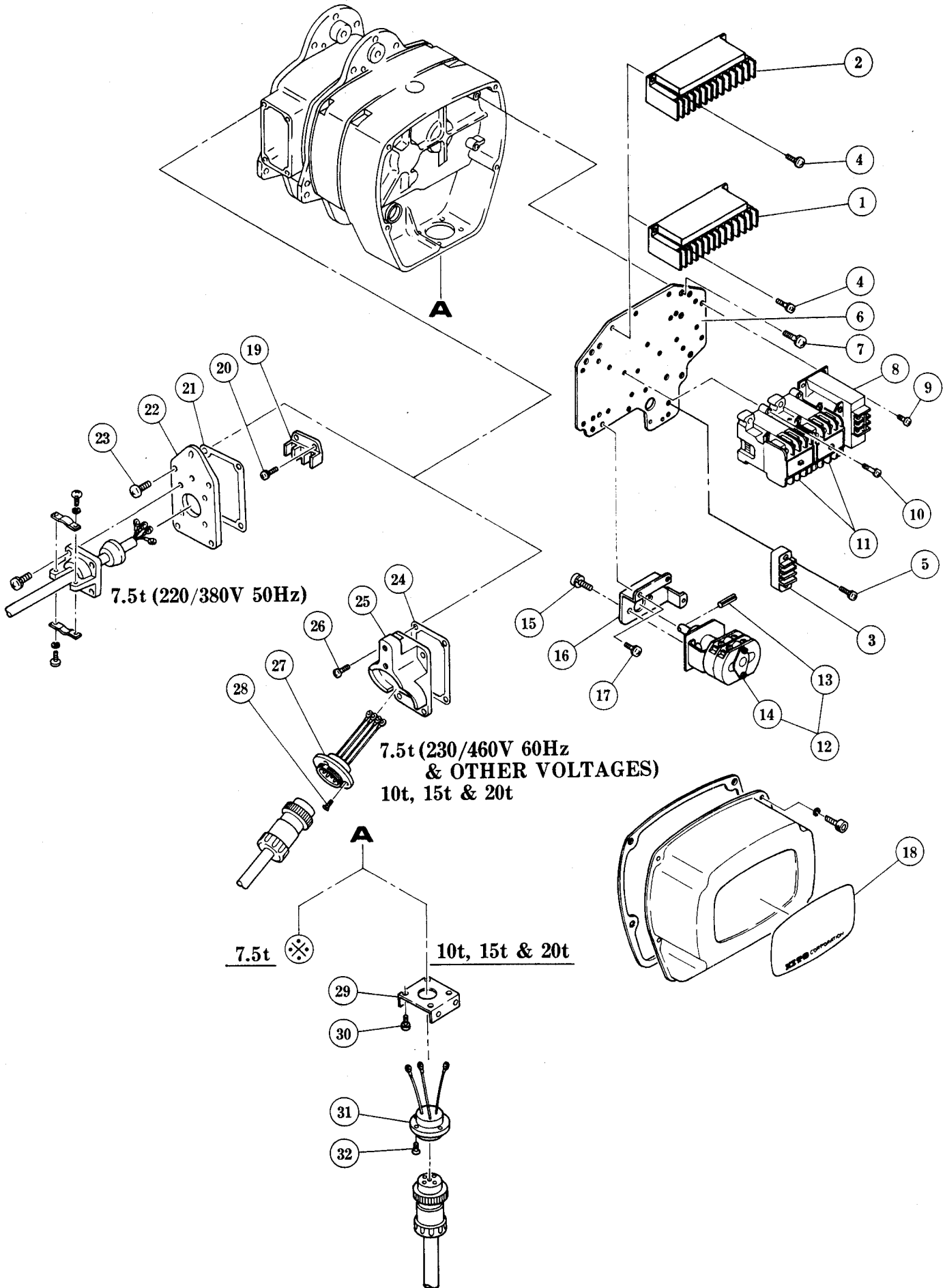


Fig No	Part No	Part Name	Nos per Hoist				Capacity			
			7.5 ^t	10 ^t	15 ^t	20 ^t	7.5 ^t	10 ^t	15 ^t	20 ^t
1	ES622	Non Reverse Relay	1							
2	E6S633	Terminal Plate 6P			2					
3	E6F606	Terminal Plate 3P			2					
4	ES666	Machine Screw with Spring Washer	2		4					
5	ES643	Machine Screw with Spring Washer			4					
6	ES601	Plate	1		2					
7	ES650	Machine Screw with Spring Washer	4		8					
8	ES616	Transformer	1							
9	ES660	Machine Screw with Spring Washer	4							
10	ES662	Machine Screw with Spring Washer	4		8					
11	ES617	Electromagnetic Contactor	1		2					
12	ES1619	Limit Switch Complete Set	1		2					
13	ES451	Spring Pin	1		2					
14	ES2619	Limit Switch Assembly	1		2					
15	E6F152	Machine Screw with Spring Washer	2		4					
16	ES620	Limit Switch Holder Plate	1		2					
17	E6F151	Machine Screw with Spring Washer	3		6					
18	ES800	Name Plate	1		4					
19	ES5345	Terminal Plate 3P Assembly	1							
20	E6F652	Machine Screw with Spring Washer	2							
21	ES119	Socket Holder Packing A	1							
22	ES320	Terminal Cover	1							
23	M6F321	Machine Screw with Sprine Washer	4							
24	ES119	Socket Holder Packing A	1		2					
25	ES118	Socket Holder A	1		2					
26	M6F321	Machine Screw with Spring Washer	4		8					
27	ES1523	Socket 4P Assembly	1		2					
28	E6FL558	Flat Head Machine Screw	4		8					
29	ES610	Socket Holder B			2					
30	ES656	Machine Screw with Spring Washer			8					
31	ES1614S	Socket 5P with 4Leads			2					
32	E6FL558	Flat Head Machine Screw			8					
⊗	Refer page 13									

② is for dual voltage 230/460V, 220/380V and ③ is for 415V

D CONTROL STATION AND CABLE PARTS FOR 10 t, 15 t & 20 t

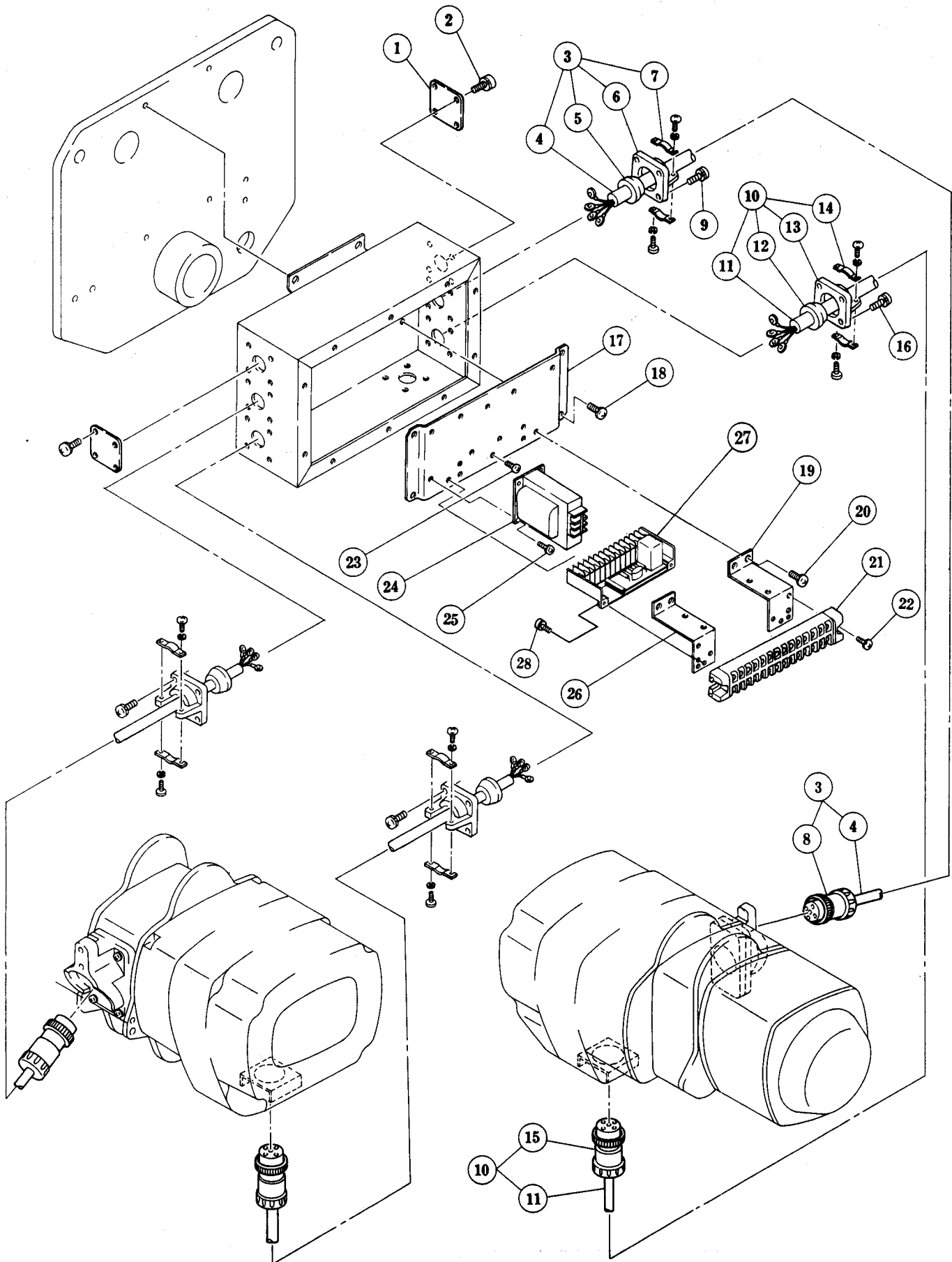
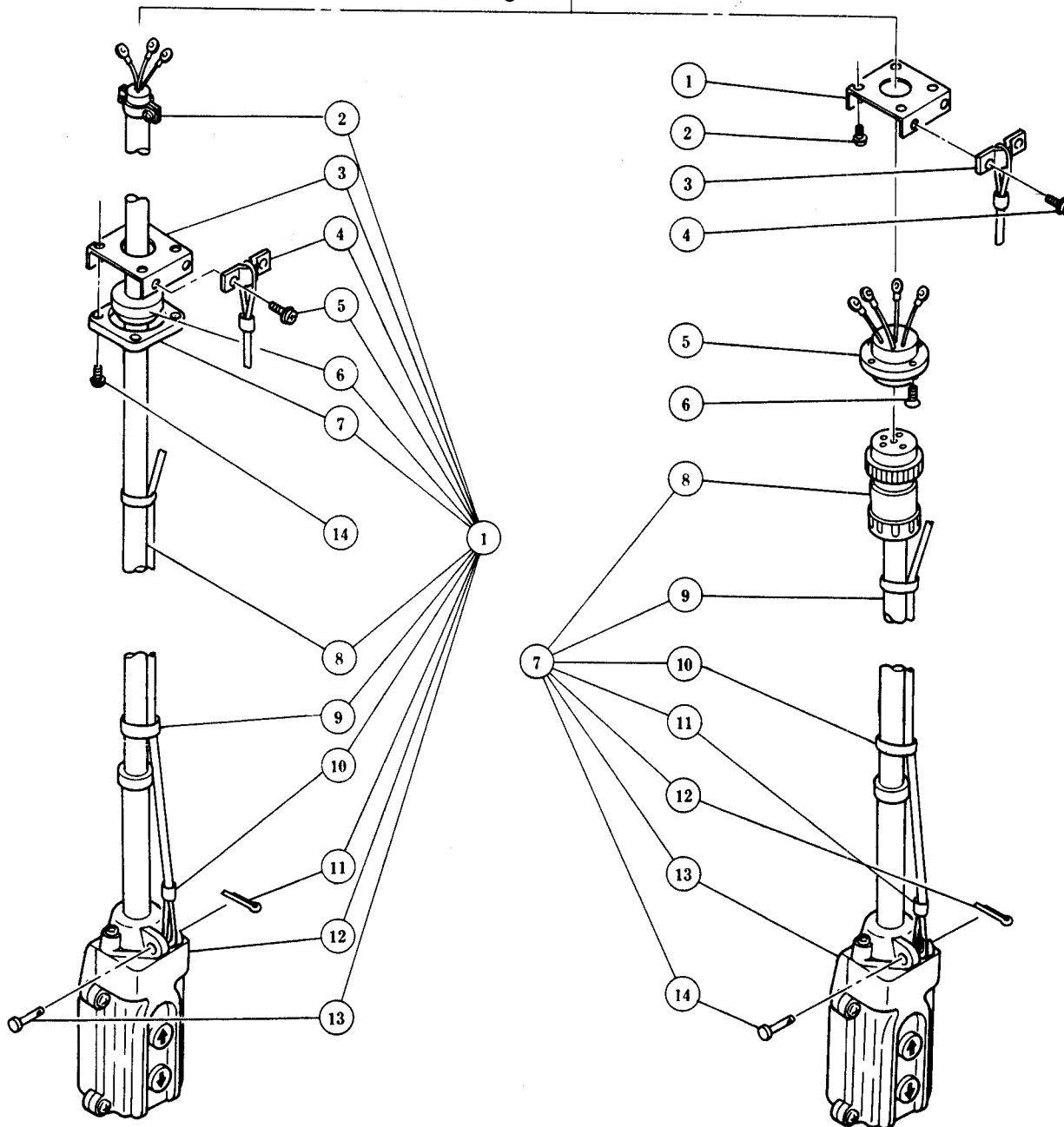
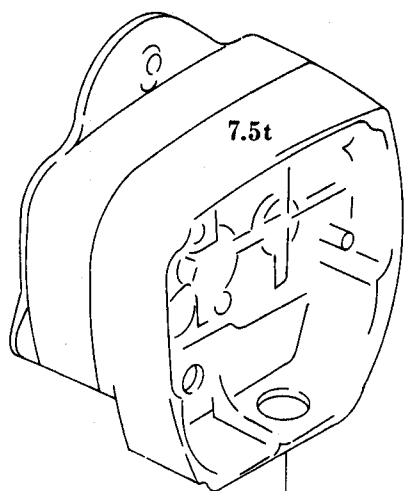


Fig No	Part No	Part Name	Nos per Hoist	Capacity
1	E6F525	Lid	2	
2	E6F151	Machine Screw with Spring Washer	8	
3	MS1601	Cable 4C Complete Set	2	
4	MS601	Cable 4C	2	
5	M6F523	Cable Packing 14	2	
6	E6FL538	Cable Holder M	2	
7	M6F1524	Cable Clamp 14 Assembly	2	
8	ES522	Plug 4P	2	
9	M6F554	Machine Screw with Spring Washer	8	
10	MS1610	Cable 4C Complete Set	2	
11	MS610	Cable 4C	2	
12	E6FL539	Cable Packing 18	2	
13	E6FL538	Cable Holder M	2	
14	E6FL1540	Cable Clamp 18 Assembly	2	
15	ES613	Plug 5P	2	
16	M6F554	Machine Screw with Spring Washer	8	
17	MS514	Base Plate	1	
18	MS554	Machine Screw with Spring Washer	4	
19	MS516	Terminal Plate Holder R	1	
20	E6F151	Machine Screw with Spring Washer	4	
21	MS519	Terminal Plate 14P	1	
22	E6F652	Machine Screw with Spring Washer	2	
23	MS555	Machine Screw with Spring Washer	1	
24	MS546	Transformer	1	
25	E6FL552	Machine Screw with Spring Washer	4	
26	MS517	Terminal Plate Holder L	1	
27	MS548	Non-Reverse Relay	1	
28	MS555	Machine Screw with Spring Washer	4	

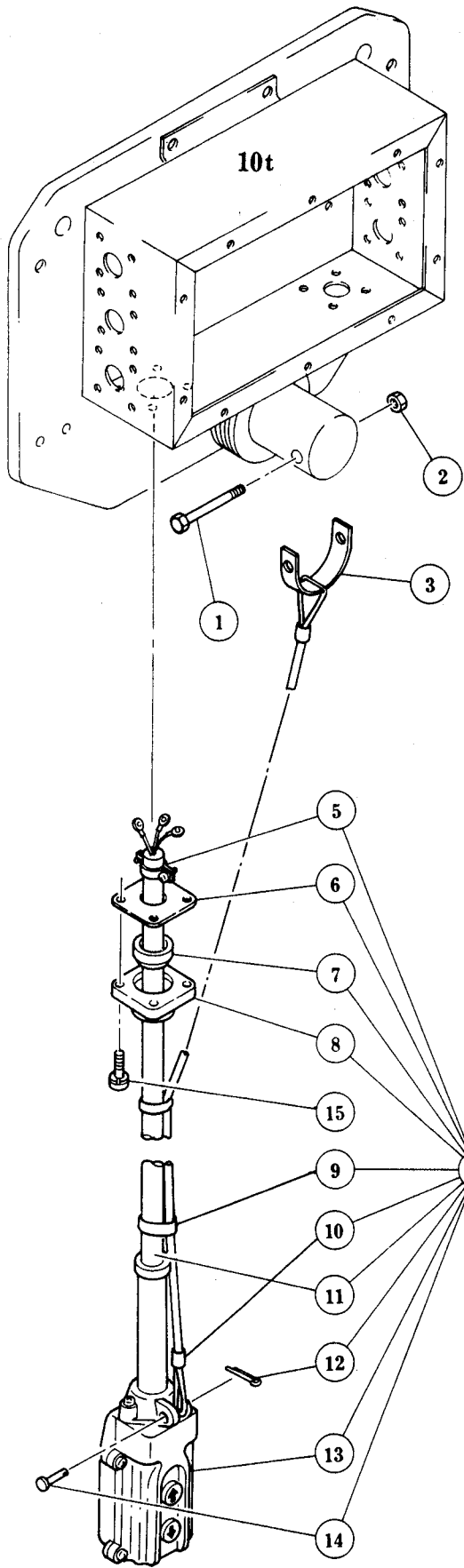
E PUSH BUTTON CONTROL STATION PARTS



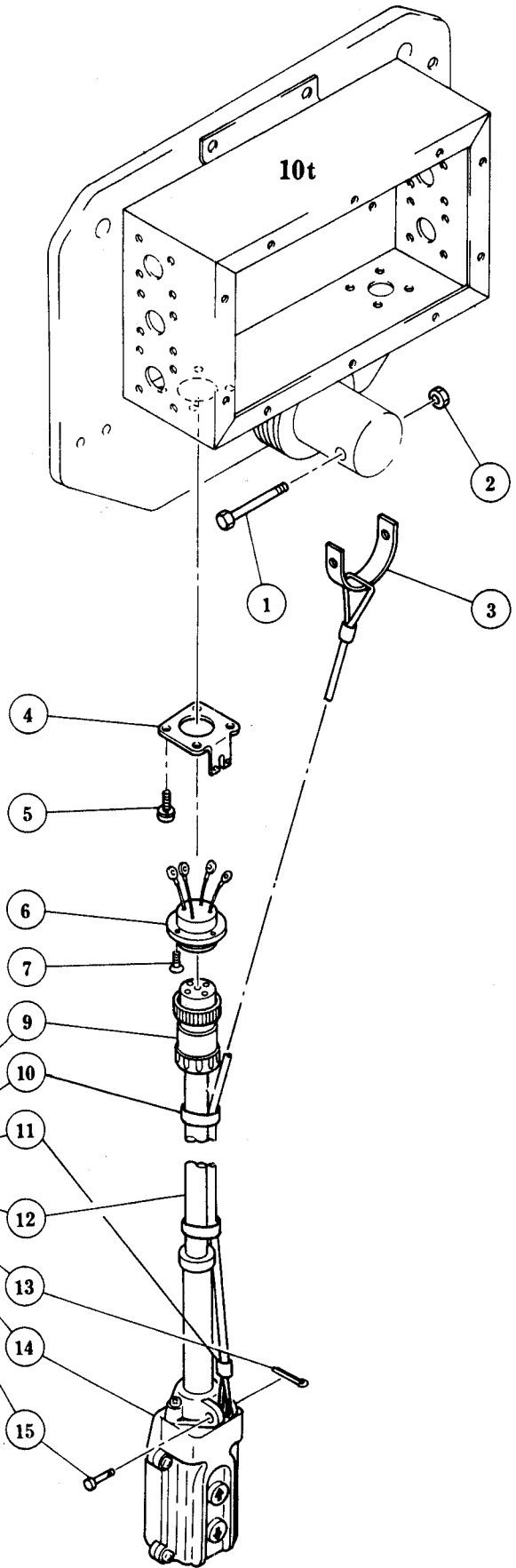
220/380V 50Hz

230/460V 60Hz & OTHER VOLTAGES

Fig No	Part No	Part Name	Nos per Hoist	Capacity
220/380V 50HZ				
1	ES1605S	2 Push Bottom Cord Complete Set	1	
2	E6F1524	Cord Clamp 14 Assembly	1	
3	E6F613	Holder Plate U	1	
4	E6F614	Cord Chain Stopper	1	
5	E6F152	Machine Screw with Spring Washer	2	
6	E6F523	Packing 12	1	
7	E6F522	Cord Holder 42	1	
8	ES605S	Push Button Cord 3C	1	
9	E3S637	Lock-belt	2	
10	E3S638	Fixing sleeve	2	
11	E6F671	Split Pin	1	
12	ES1615S	2 Push Button Switch Assembly	1	
13	E6F638	Cord Chain Pin	1	
14	ES656	Machine Screw with Spring Washer	4	
230/460V 60HZ & OTHER VOLTAGES				
1	ES610	Socket Holder B	1	
2	ES656	Machine Screw with Spring Washer	4	
3	E6F614	Cord Chain Stopper	1	
4	E6F152	Machine Screw with Spring Washer	2	
5	ES1614S	Socket 5P with 4 Leads	1	
6	E6FL558	Flat Head Machine Screw	4	
7	ES1605S	2 Push Button Cord Complete Set	1	
8	ES613	Plug 5P	1	
9	ES605S	Push Button Cord 3C	1	
10	E3S637	Lock-belt	2	
11	E3S638	Fixing sleeve	2	
12	E6F671	Split Pin	1	
13	ES1615S	2 Push Button Switch Assembly	1	
14	E6F638	Cord Chain Pin	1	



220/380V 50Hz



230/460V 60Hz & OTHER VOLTAGES

Fig No	Part No	Part Name	Nos per Hoist	Capacity
220/380V 50HZ				
1	MS527	Bolt	1	
2	MS528	U Nut	1	
3	MS526	Cord Chain Support	1	
4	E6S1605S	2 Push Button Cord Complete Set	1	
5	E6F1524	Cord Clamp 14 Assembly	1	
6	E6F537	Holder Plate 42	1	
7	E6F523	Packing 12	1	
8	E6F522	Cord Holder 42	1	
9	E3S637	Lock-belt	2	
10	E3S638	Fixing sleeve	2	
11	ES605S	Push Button Cord 3C	1	
12	E6F671	Split Pin	1	
13	ES1615S	2 Push Button Switch Assembly	1	
14	E6F638	Cord Chain Pin	1	
15	E6F551	Machine Screw with Spring Washer	4	
230/460V 60HZ & OTHER VOLTAGES				
1	MS527	Bolt	1	
2	MS528	U Nut	1	
3	MS526	Cord Chain Support	1	
4	MS529	Cord Holder Support 42	1	
5	E6F151	Machine Screw with Spring Washer	4	
6	ES5539	Socket 5P Assembly	1	
7	E6FL558	Flat Head Machine Screw	4	
8	E6S1605S	2 Push Button Cord Complete Set	1	
9	ES613	Plug 5P	1	
10	E3S637	Lock-belt	2	
11	E3S638	Fixing sleeve	2	
12	ES605S	Push Button Cord 3C	1	
13	E6F671	Split Pin	1	
14	ES1615S	2 Push Button Switch Assembly	1	
15	E6F638	Cord Chain Pin	1	

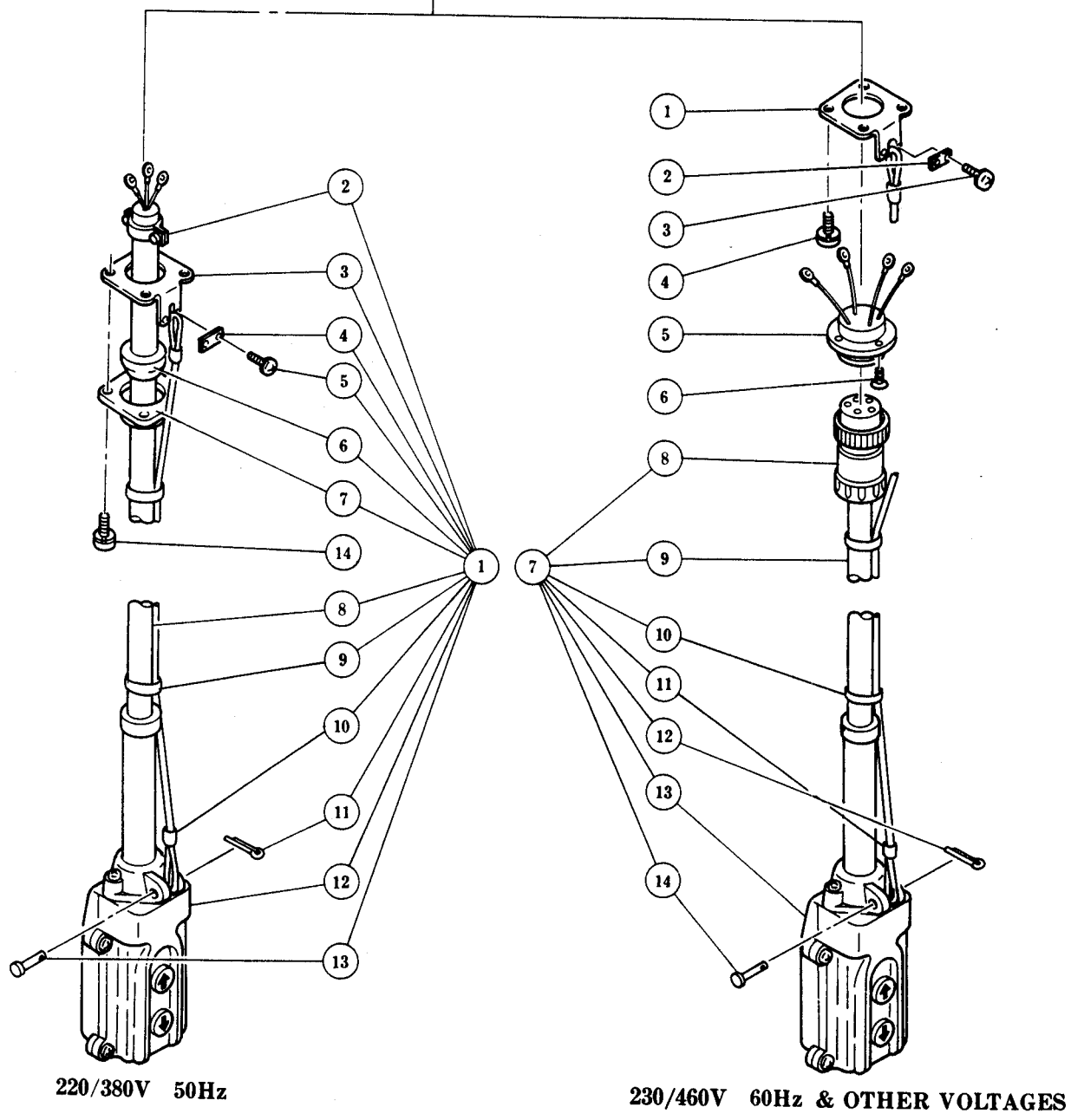
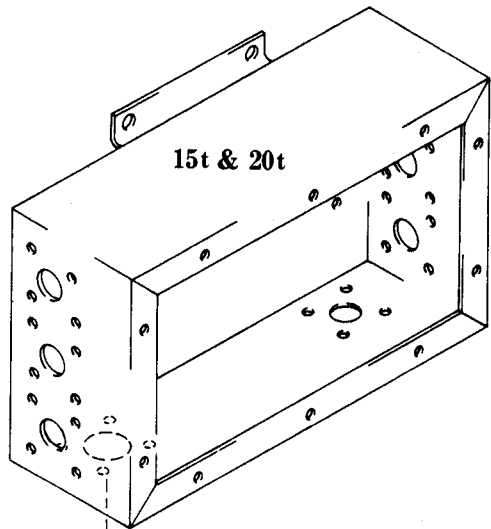


Fig No	Part No	Part Name	Nos per Hoist	Capacity
220/380V 50HZ				
1	E6S1605	2 Push Button Cord Complete Set	1	
2	E6F1524	Cord Clamp 14 Assambly	1	
3	MS529	Cord Holder Support 42	1	
4	M6F530	Cord Chain Stopper	1	
5	E6F151	Machine Screw with Spring Washer	2	
6	E6F523	Packing 12	1	
7	E6F522	Cord Holder 42	1	
8	ES605S	Push Button Cord 3C	1	
9	E3S637	Lock-belt	2	
10	E3S638	Fixing sleeve	2	
11	E6F671	Split Pin	1	
12	ES1615S	2 Push Button Switch Assembly	1	
13	E6F638	Cord Chain Pin	1	
14	E6F551	Machine Srew with Spring Washer	4	
230/460V 60HZ & OTHER VOLTAGES				
1	MS529	Cord Holder Support 42	1	
2	M6F530	Cord Chain Stopper	1	
3	E6F151	Machine Screw with Spring Washer	2	
4	E6F151	Machine Screw with Spring Washer	4	
5	E6S5539	Socket 5P Assembly	1	
6	E6FL558	Flat Head Machine Screw	4	
7	ES1605S	2 Push Button Cord Complete Set	1	
8	ES613	Plug 5P	1	
9	ES605S	Push Button Cord 3C	1	
10	E3S637	Lock-belt	2	
11	E3S638	Fixing sleeve	2	
12	E6F671	Split Pin	1	
13	ES1615S	2 Push Button Switch Assembly	1	
14	E6F638	Cord Chain Pin	1	

F POWER SUPPLY PARTS

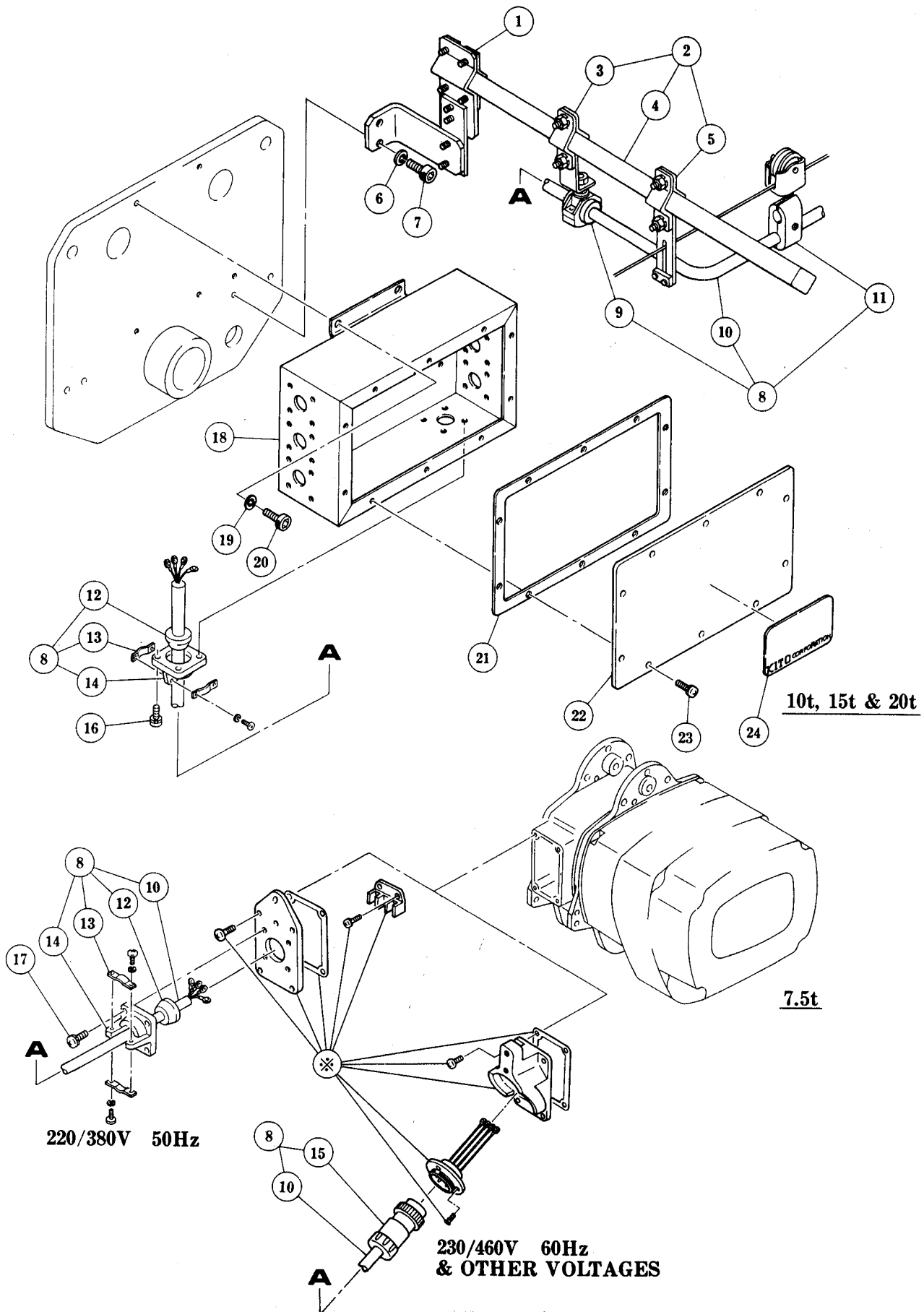
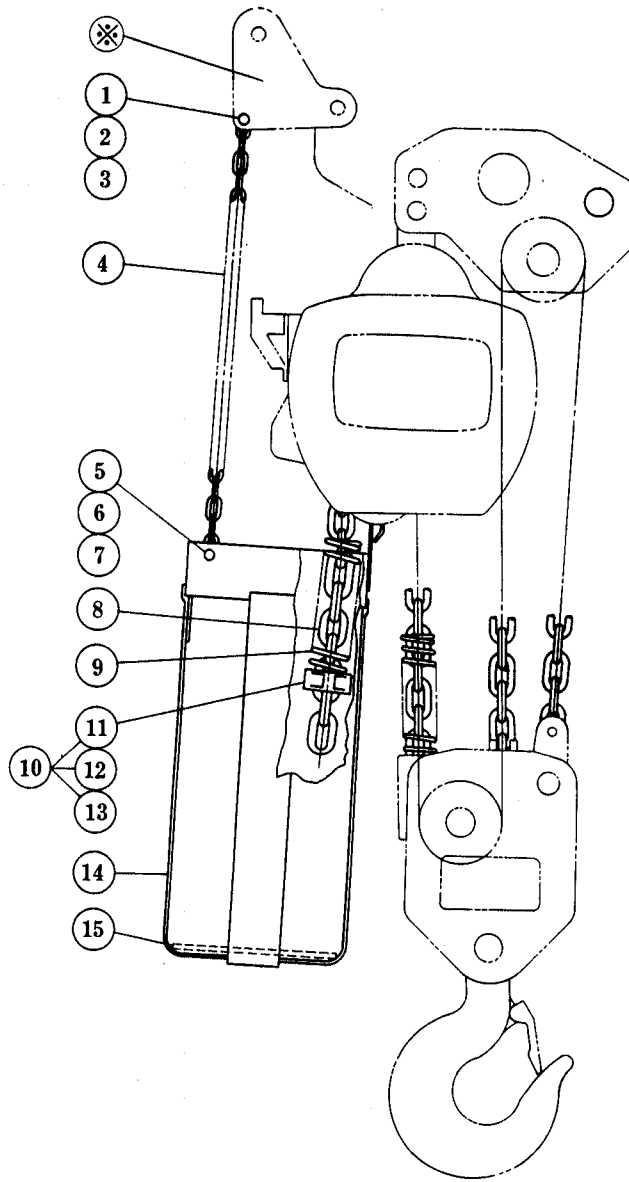


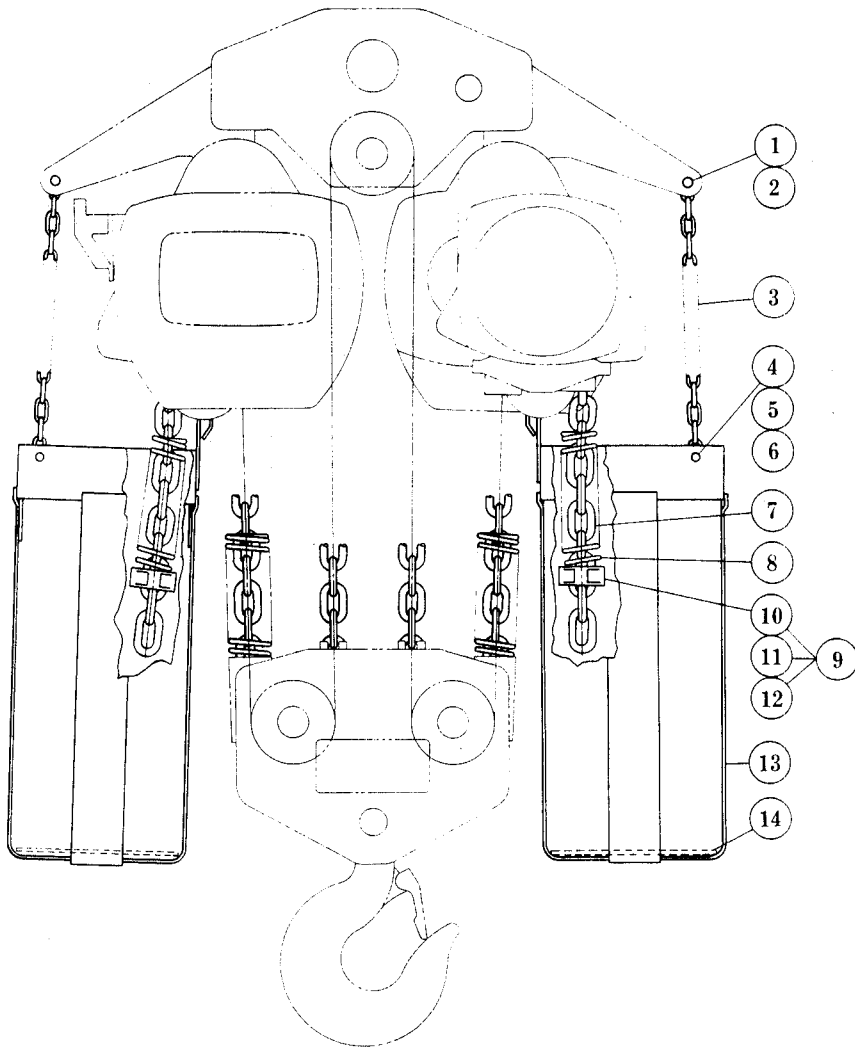
Fig No	Part No	Part Name	Nos per Hoist				Capacity			
			7.5 ^t	10 ^t	15 ^t	20 ^t	7.5 ^t	10 ^t	15 ^t	20 ^t
1	M6F1542	Bar Holder Assembly		1						
2	MS1721	Cable Support Bar Assembly		1						
3	M6F1723	Cable Support Arm Assembly		1						
4	M6F721	Cable Support Bar		1						
5	M6F1727	Wire Guide Assembly		1						
6	M6F576	Spring Washer		2						
7	M6F575	Socket Bolt		2						
8	MS1731	Power Supply Cable 4C Assembly		1						
9	MS1724	Cable Support Assembly		1						
10	MS731	Power Supply Cable 4C		1						
11	MS1733	Cable Hanger Assembly		6						
12	ES729	Cable Packing		1						
13	MS1735	Cable Clamp Assembly		1						
14	E6FL538	Cable Holder M		1						
15	ES522	Plug 4P		1						
16	M6F779	Machine Screw with Spring Washer		4						
17	M6F321	Machine Screw with Spring Washer		4						
18	MS5511	Switch Box Assembly		1						
19	M6F576	Spring Washer		4						
20	M6F575	Socket Bolt		4						
21	MS513	Switch Box Packing		1						
22	MS512	Switch Box Lid		1						
23	E6F151	Machine Screw with Spring Washer		10						
24	MS801	Name Plate		1						

G CHAIN CONTAINER PARTS

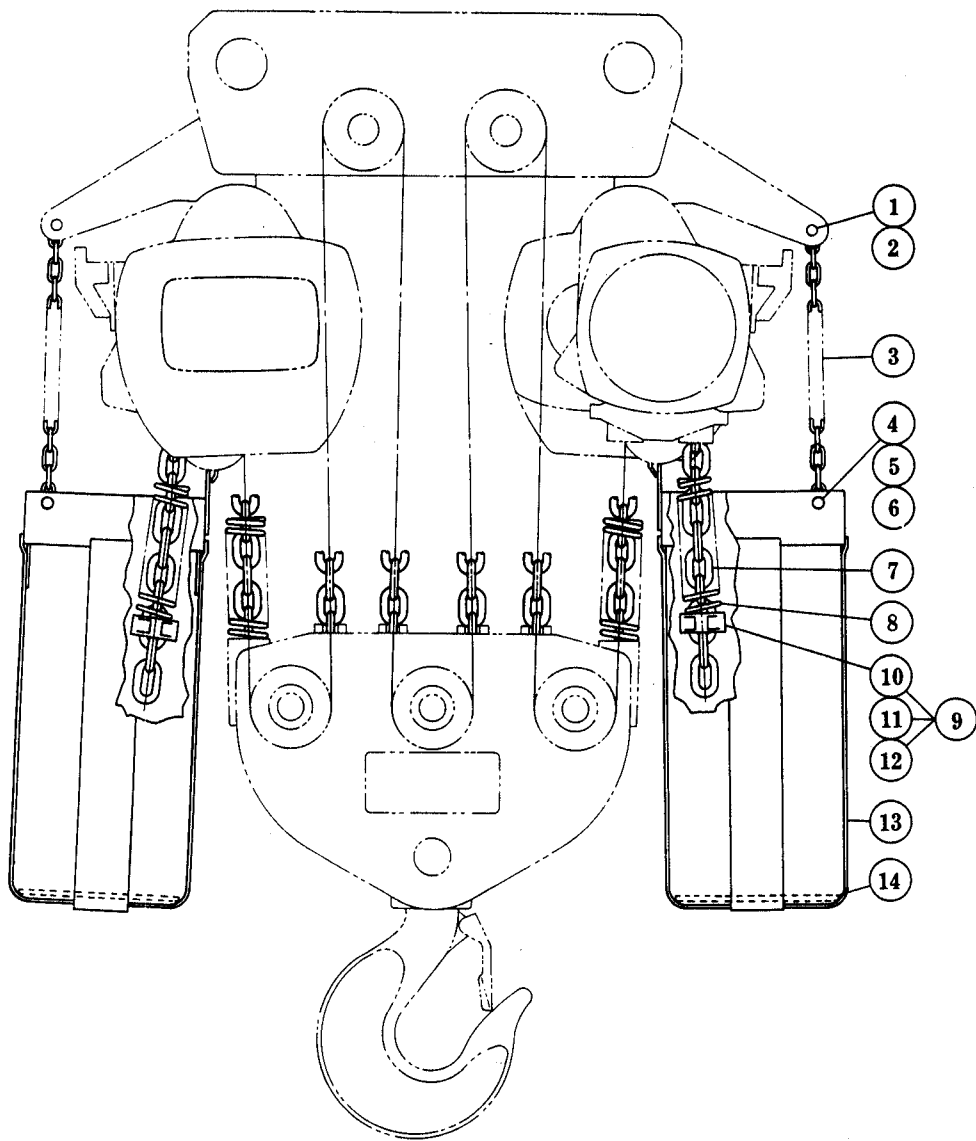


7.5t

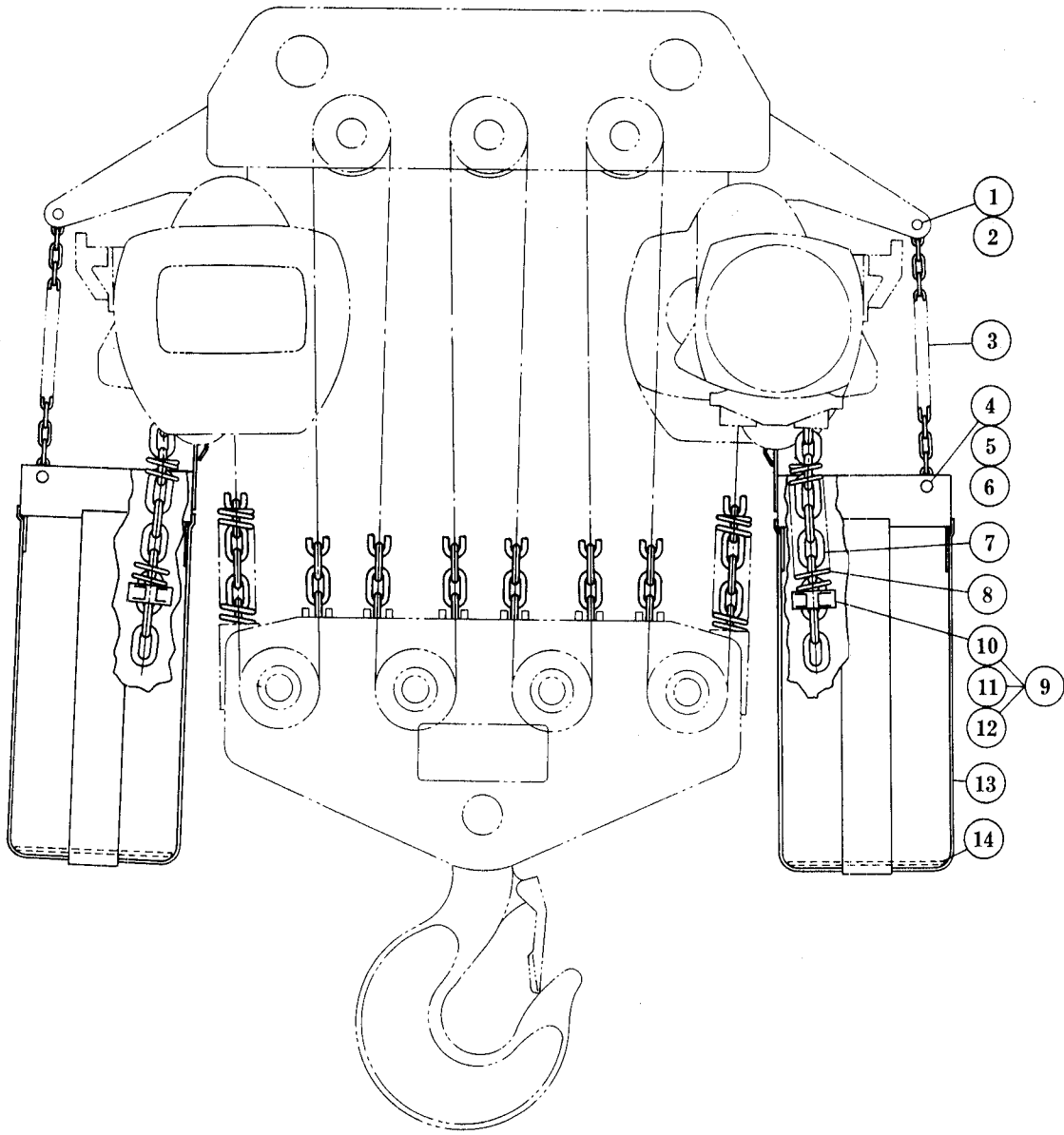
Fig No	Part No	Part Name	Nos per Hoist	Capacity
1	ES872	Socket Bolt	2	
2	ES857	U Nut	2	
3	ES874	Washer	2	
4	ES875	Container Chain	2	
5	MS256	Socket Bolt	2	
6	ES857	U Nut	2	
7	ES874	Washer	2	
8	ES840	Load Chain	1	
9	ES047	Chain Spring	2	
10	ES1045	Stopper Assembly	1	
	11	ES045	Stopper	2
	12	ES090	Socket Bolt	2
	13	E6F854	Spring Washer	2
14	ES5830	Chain Container S	1	
	ES5831	Chain Container L	1	
15	ES837	Chain Plate	1	
⊗	Refer Trolley Parts List.			



10t



15t



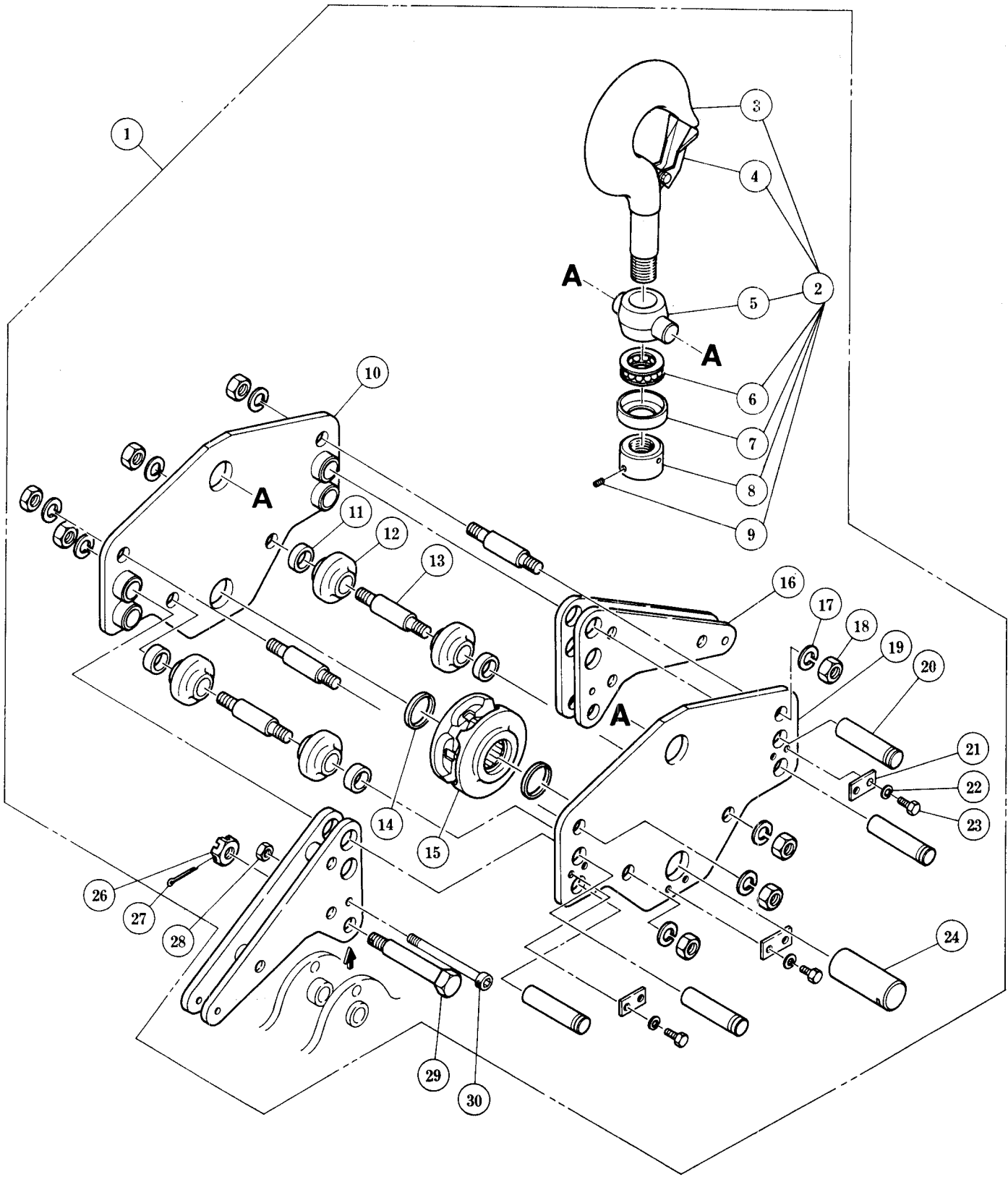
20t

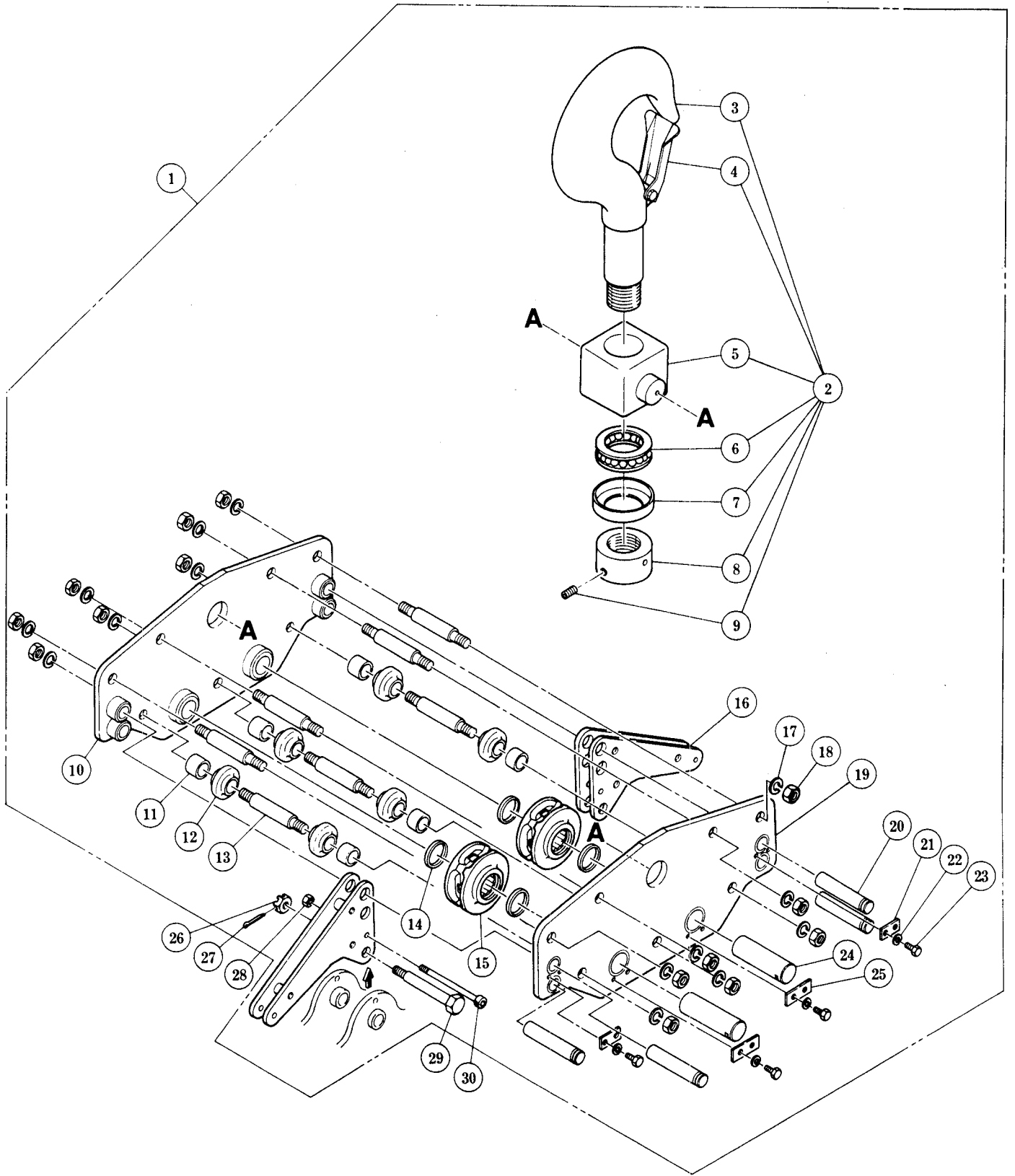
Fig No	Part No	Part Name	Nos per Hoist			Capacity		
			10 ^t	15 ^t	20 ^t	10 ^t	15 ^t	20 ^t
1	ES872	Socket Bolt		2				
2	ES857	U Nut		2				
3	ES875	Container Chain		4				
4	MS256	Socket Bolt		4				
5	ES857	U Nut		4				
6	ES874	Washer		4				
7	ES840	Load Chain		1				
8	ES047	Chain Spring		4				
9	ES1045	Stopper Assembly		2				
10	ES045	Stopper		4				
11	ES090	Socket Bolt		4				
12	E6F854	Spring Washer		4				
13	ES5830	Chain Container S		2				
	ES5831	Chain Container L		2				
14	ES837	Chain Plate		2				

HOOK SUSPENSION TYPE HOIST

A TOP HOOK PARTS

10t





20t

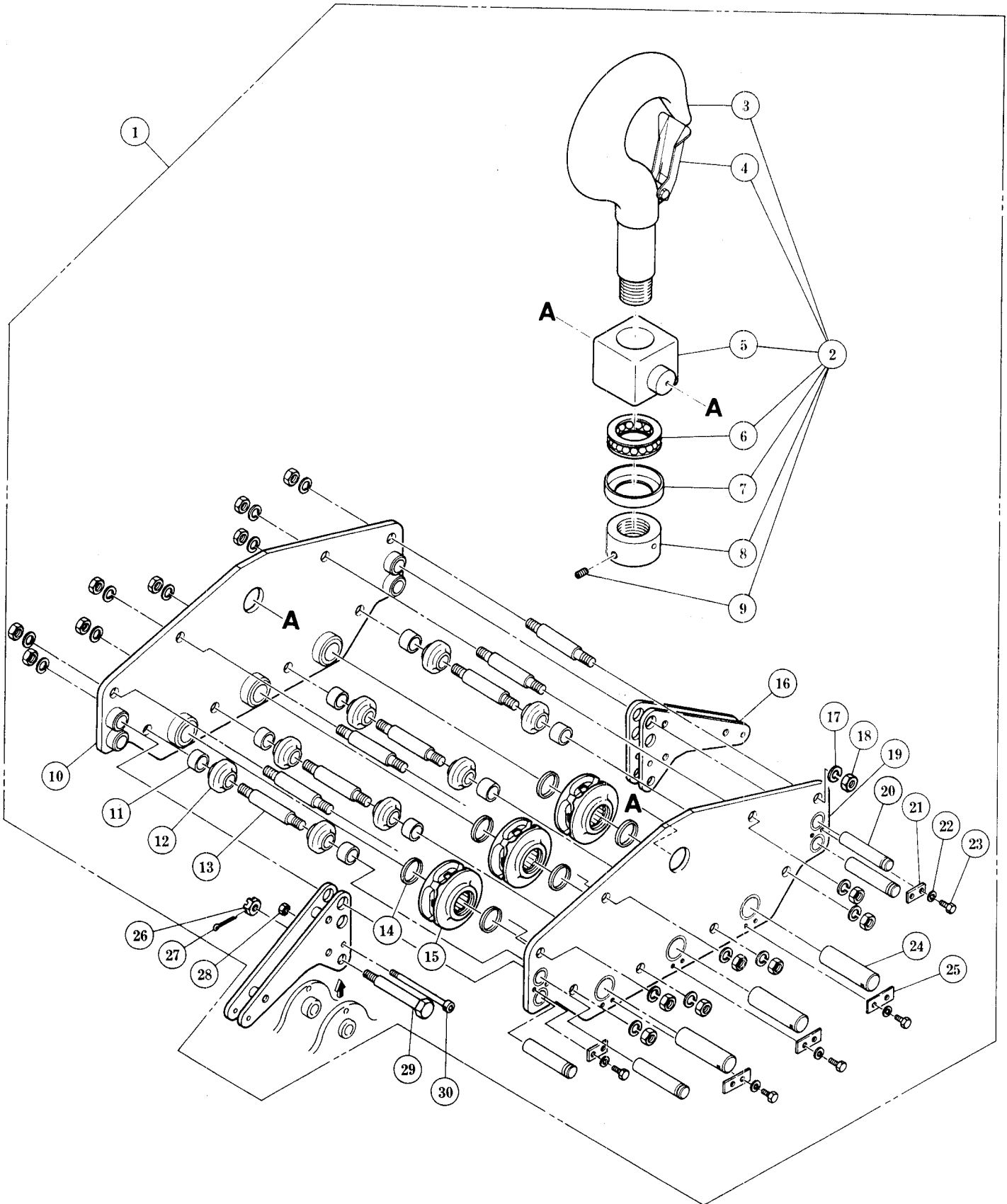


Fig No	Part No	Part Name	Nos per Hoist			Capacity		
			10 ^t	15 ^t	20 ^t	10 ^t	15 ^t	20 ^t
1	ES1011	Top Hook Complete Set	1					
2	ES2021	Bottom Hook Assembly	1					
3	ES021	Bottom Hook	1					
4	ES071	Hook Latch Assembly	1					
5	ES030	Bottom Yoke	1					
6	ES022	Thrust Bearing	1					
7	ES023	Bearing Cover	1					
8	ES024	Hook Nut	1					
9	ES087	Stopper Screw	1					
10	ES5012	Top Suspension Plate B	1					
11	ES065	Bottom Collar	4	6	8			
12	ES062	Guide Roller	4	6	8			
13	ES038	Bottom Stay Bolt	4	7	8			
14	ES055	Shielding	2	4	6			
15	ES1052	Bottom Idle Sheave Assembly	1	2	3			
16	ES005	Suspender	2					
17	ES082	Spring Washer	8	14	16			
18	ES081	Nut	8	14	16			
19	ES5011	Top Suspension Plate A	1					
20	ES013	Suspender Shaft B	4					
21	ES056	Shaft Stopper	3	2	2			
22	E6F854	Spring Washer	6	8	10			
23	ES083	Bolt	6	8	10			
24	ES057	Top Shaft B	1	2	3			
25	ES060	Shaft Stopper B		2	3			
26	ES161	Slotted Nut	2					
27	ES162	Split Pin	2					
28	ES066	U Nut	2					
29	ES117	Top Pin	2					
30	ES065	Socket Bolt	2					

B ELECTRIC PARTS FOR 10t,15 t&20 t

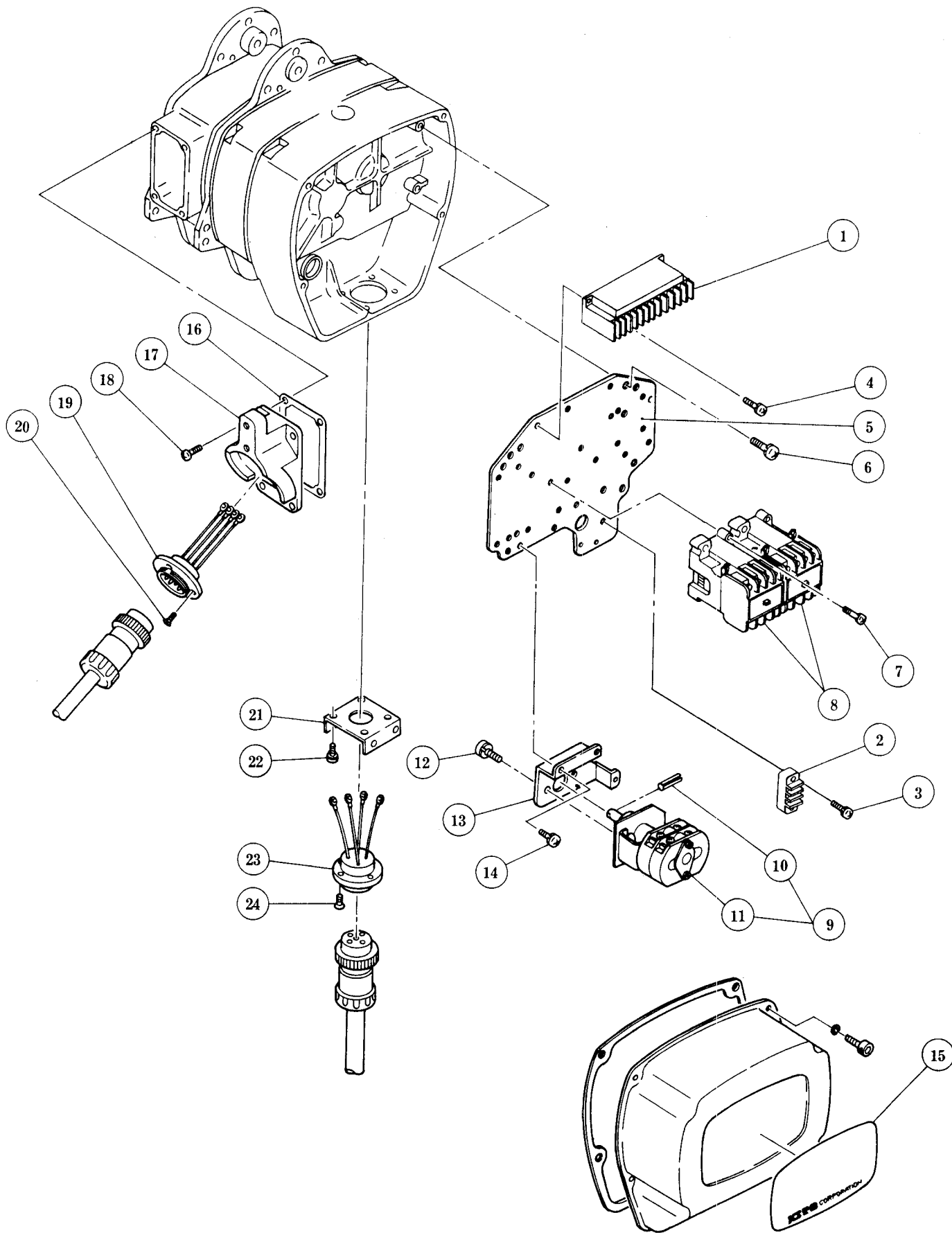


Fig No	Part No	Part Name	Nos per Hoist	Capacity
1	E6S633	Terminal Plate 6P	2	
2	E6F606	Terminal Plate 3P	2	
3	ES643	Machine Screw with Spring Washer	4	
4	ES666	Machine Screw with Spring Washer	8	
5	ES601	Plate	2	
6	ES650	Machine Screw with Spring Washer	8	
7	ES662	Machine Screw with Spring Washer	8	
8	ES617	Electromagnetic Contactor	4	
9	ES1619	Limit Switch Complete Set	2	
10	ES451	Spring Pin	2	
11	ES2619	Limit Switch Assembly	2	
12	E6F152	Machine Screw with Spring Washer	4	
13	ES620	Limit Switch Holder Plate	2	
14	E6F151	Machine Screw with Spring Washer	6	
15	ES800	Name Plate	2	
16	ES119	Socket Holder Packing A	2	
17	ES118	Socket Holder A	2	
18	M6F321	Machine Screw with Spring Washer	8	
19	ES1523	Socket 4P Assembly	2	
20	E6FL558	Flat Head Machine Screw	8	
21	ES610	Socket Holder B	2	
22	ES656	Machine Screw with Spring Washer	8	
23	ES1614S	Socket 5P with 4Leads	2	
24	E6FL558	Flat Head Machine Screw	8	

C CONTROL STATION AND CABLE PARTS FOR 10t, 15t & 20t

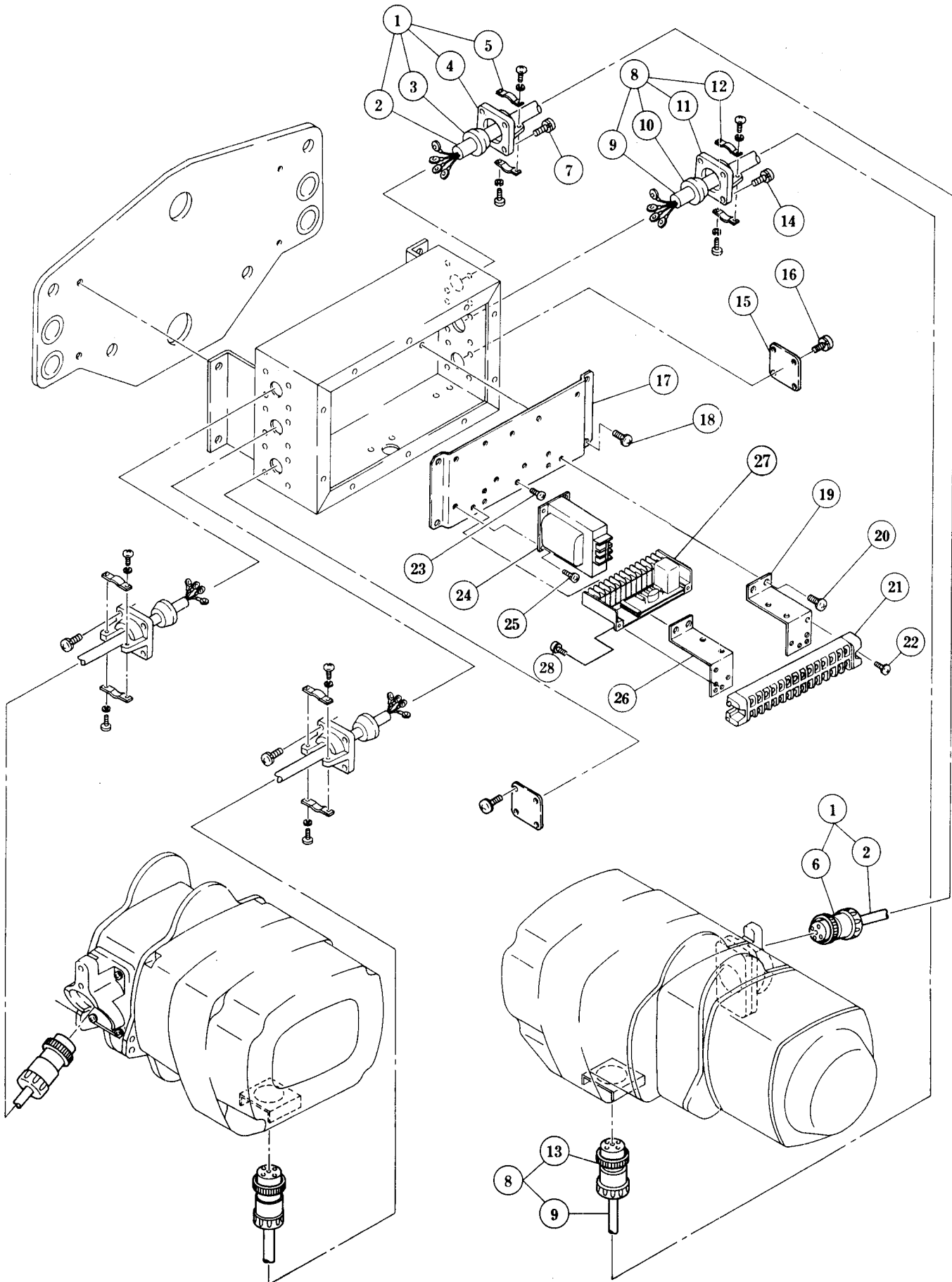


Fig No	Part No	Part Name	Nos per Hoist	Capacity
1	MS1601	Cable 4C Complete Set	2	
	2	MS601	Cable 4C	2
	3	M6F523	Cable Packing 14	2
	4	E6FL538	Cable Holder M	2
	5	M6F1524	Cable Clamp 14 Assembly	2
	6	ES522	Plug 4P	2
7	M6F554	Machine Screw with Spring Washer	8	
8	MS1610	Cable 4C Complete Set	2	
	9	MS610	Cable 4C	2
	10	E6FL539	Cable Packing 18	2
	11	E6FL538	Cable Holder M	2
	12	E6FL1540	Cable Clamp 18 Assembly	2
	13	ES613	Plug 5P	2
14	M6F554	Machine Screw with Spring Washer	8	
15	E6F525	Lid	2	
16	E6F151	Machine Screw with Spring Washer	8	
17	MS514	Base Plate	1	
18	MS554	Machine Screw with Spring Washer	4	
19	MS516	Terminal Plate Holder R	1	
20	E6F151	Machine Screw with Spring Washer	4	
21	MS519	Terminal Plate 14P	1	
22	E6F652	Machine Screw with Spring Washer	2	
23	MS555	Machine Screw with Spring Washer	1	
24	MS546	Transformer	1	
25	E6FL552	Machine Screw with Spring Washer	4	
26	MS517	Terminal Plate Holder L	1	
27	MS548	Non-Reverse Relay	1	
28	MS555	Machine Screw with Spring Washer	4	

D PUSH BUTTON CONTROL STATION PARTS

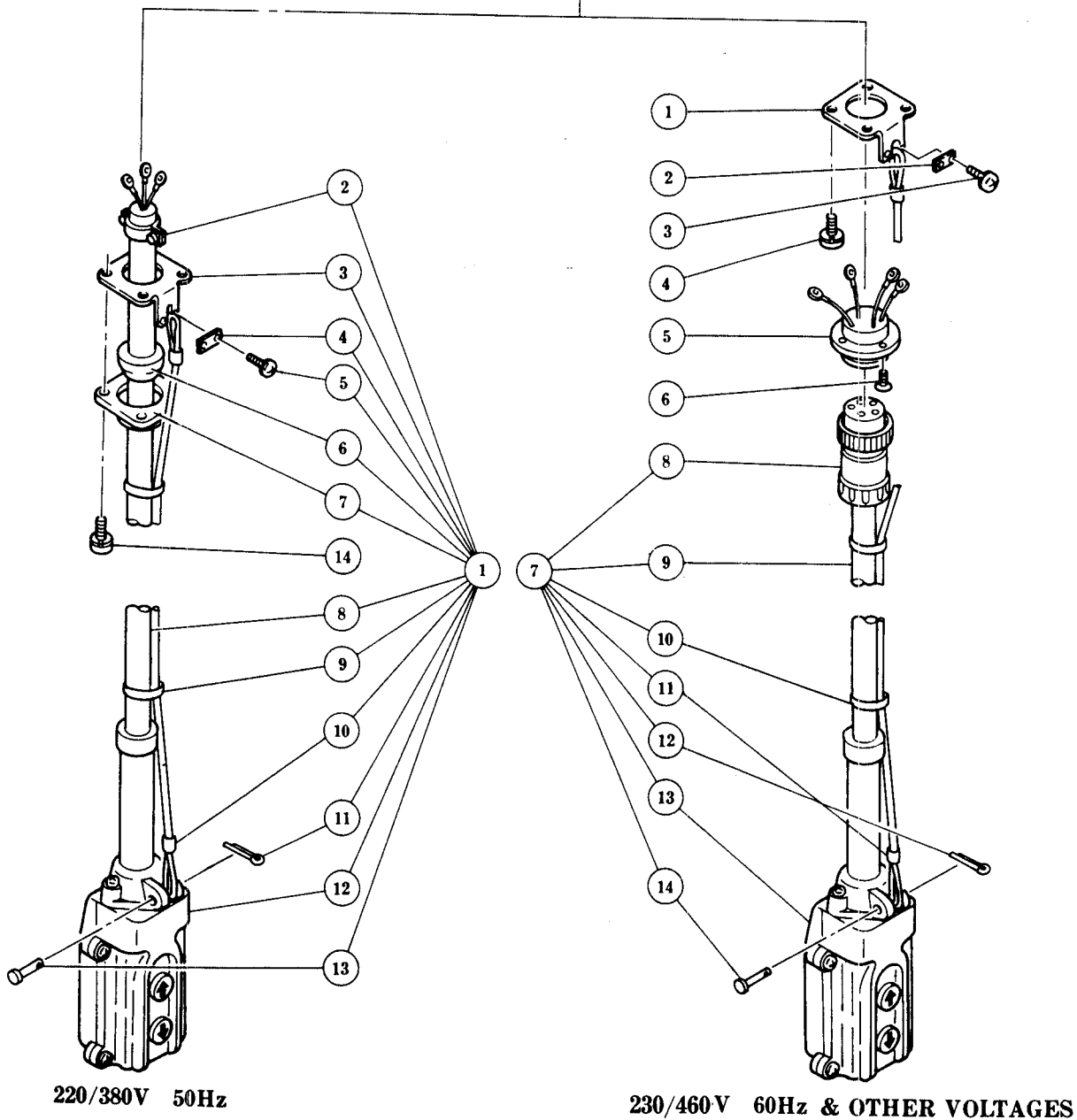
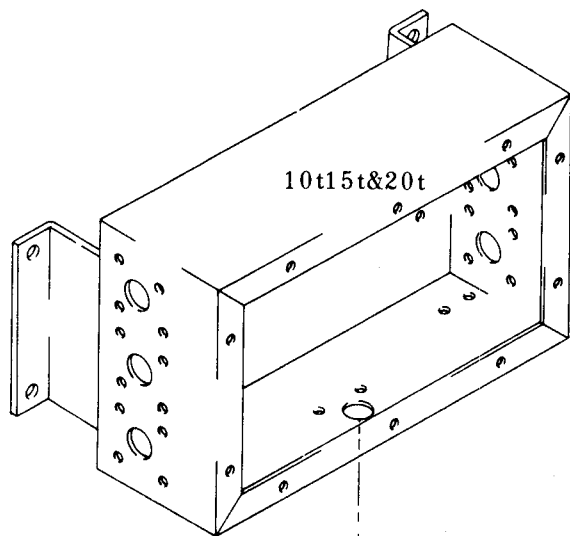


Fig No	Part No	Part Name	Nos per Hoist	Capacity
220/380V 50HZ				
1	E6S1605	2 Push Button Cord Complete Set	1	
2	E6F1524	Cord Clamp 14 Assembly	1	
3	MS529	Cord Holder Support 42	1	
4	M6F530	Cord Chain Stopper	1	
5	E6F151	Machine Screw with Spring Washer	2	
6	E6F523	Packing 12	1	
7	E6F522	Cord Holder 42	1	
8	ES605S	Push Button Cord 3C	1	
9	E3S637	Lock-belt	2	
10	E3S638	Fixing sleeve	2	
11	E6F671	Split Pin	1	
12	ES1615S	2 Push Button Switch Assembly	1	
13	E6F638	Cord Chain Pin	1	
14	E6F551	Machine Screw with Spring Washer	4	
230/460V 60HZ & OTHER VOLTAGES				
1	MS529	Cord Holder Support 42	1	
2	M6F530	Cord Chain Stopper	1	
3	E6F151	Machine Screw with Spring Washer	2	
4	E6F 151	Machine Screw with Spring Washer	4	
5	ES5539	Socket 5P Assembly	1	
6	E6FL558	Flat Head Machine Screw	4	
7	ES1605S	2 Push Button Cord Complete Set	1	
8	ES613	Plug 5P	1	
9	ES605S	Push Button Cord 3C	1	
10	E3S637	Lock-belt	2	
11	E3S638	Fixing sleeve	2	
12	E6F671	Split Pin	1	
13	ES1615S	2 Push Button Switch Assembly	1	
14	E6F638	Cord Chain Pin	1	

E POWER SUPPLY PARTS FOR 10t,15t &20 t

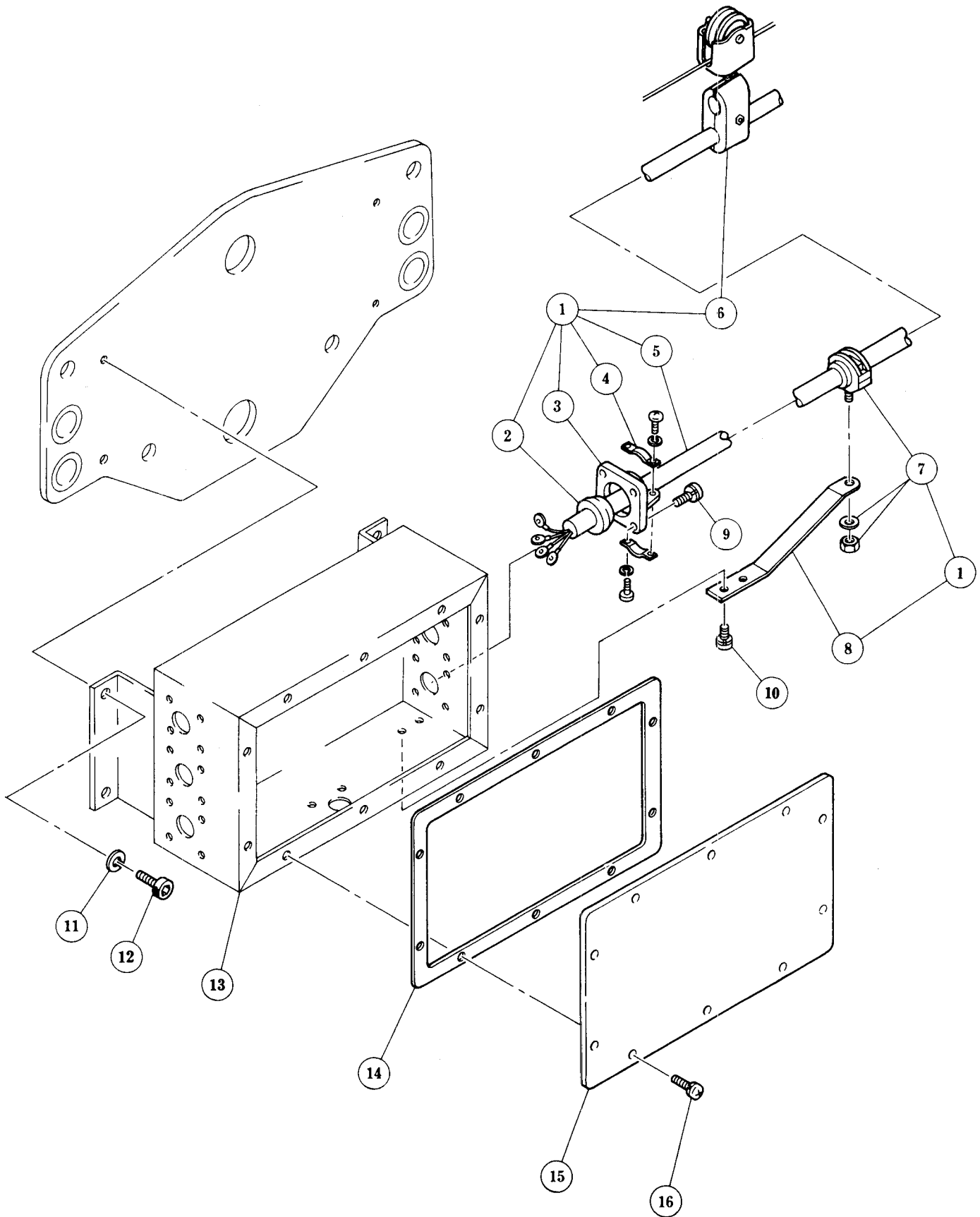
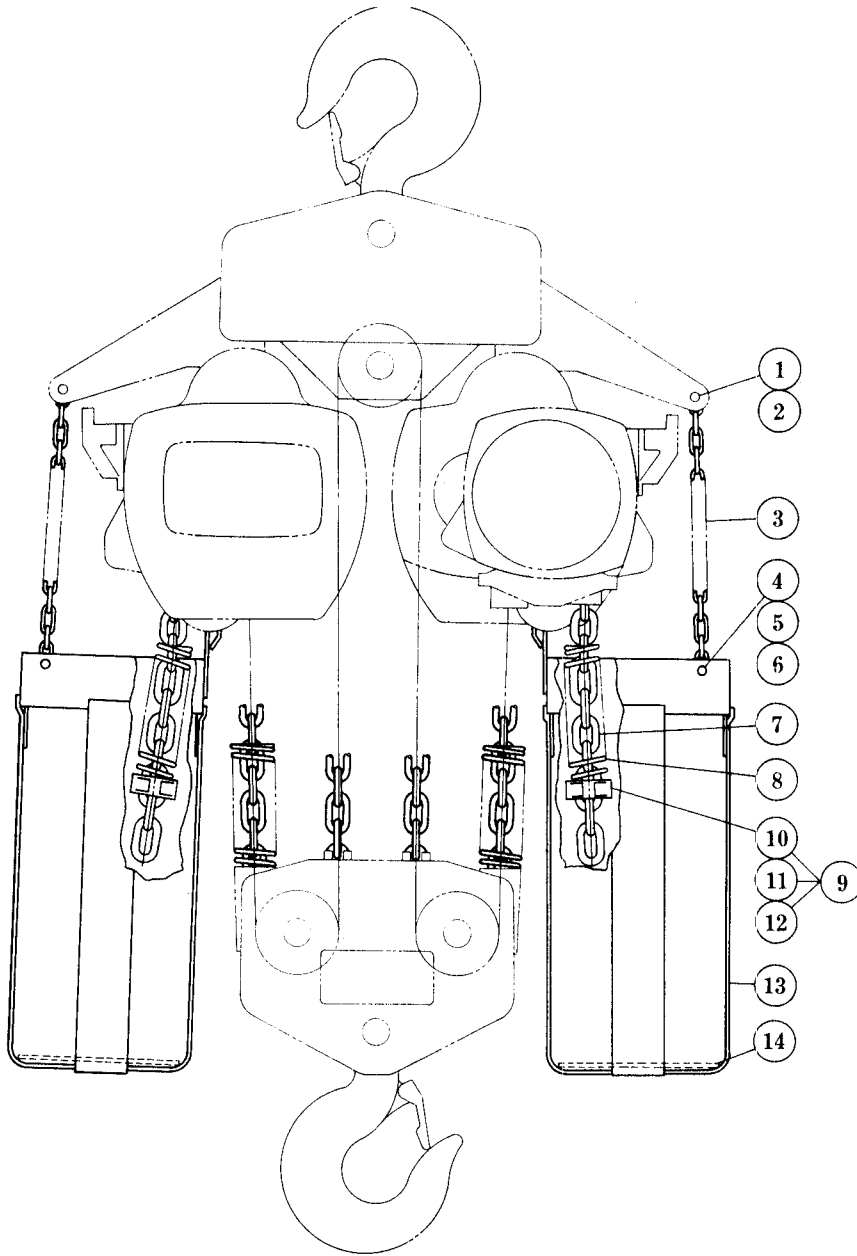
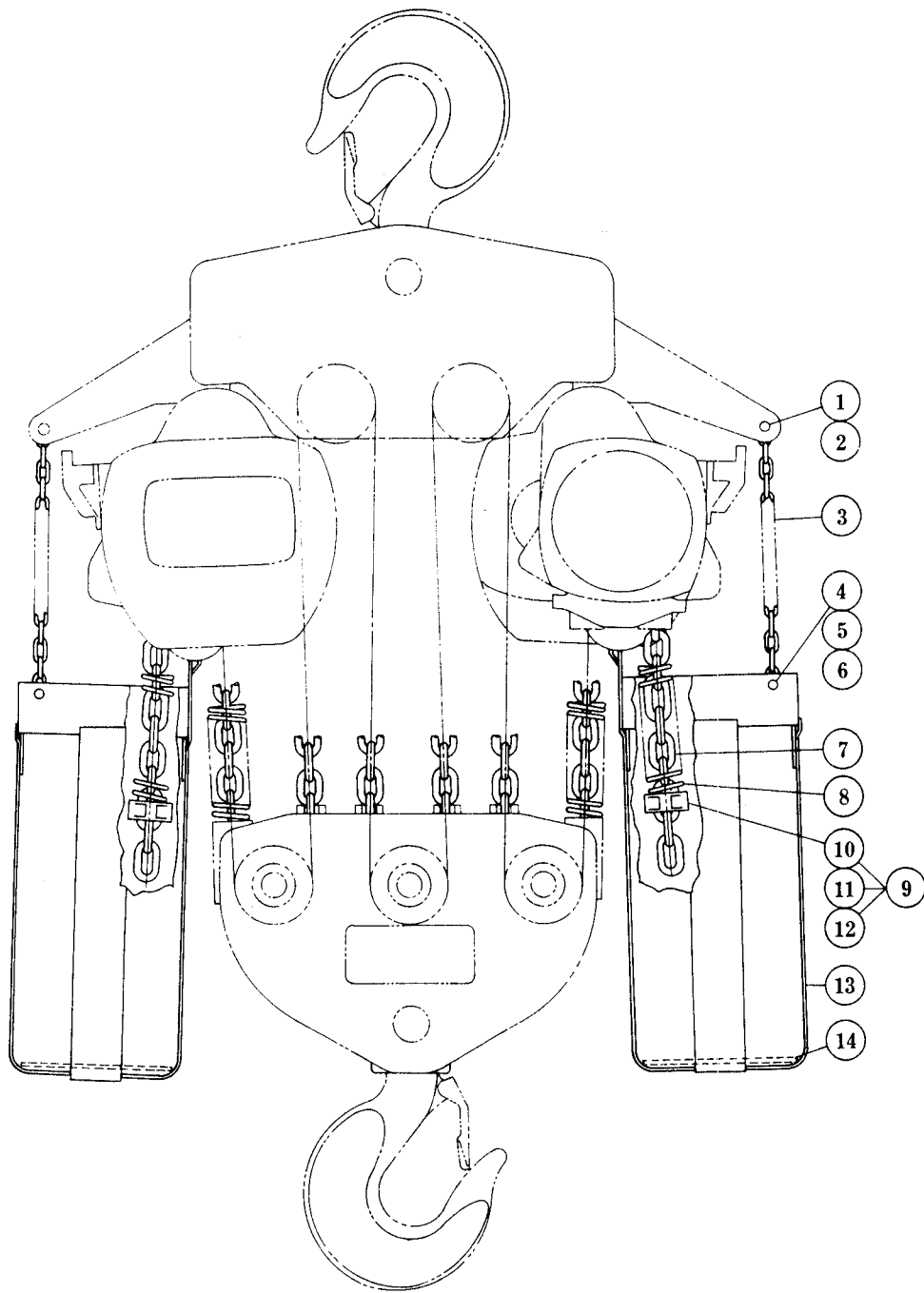


Fig No	Part No	Part Name	Nos per Hoist	Capacity
1	ES1731	Power Supply Cable 4C Assembly	1	
	2	MS729 Cable Packing 16	1	
	3	E6FL538 Cable Holder M	1	
	4	MS1735 Cable Clamp 16 Assembly	1	
	5	ES731 Power Supply Cable 4C	1	
	6	MS1733 Cable Hanger Cable 4C Assembly	6	
	7	ES1724 Cable Support Assembly	1	
	8	ES723 Cable Clamp Arm	1	
	9	M6F779 Machine Screw with Spring Washer	4	
	10	M6F321 Machine Screw with Spring Washer	2	
	11	M6F576 Spring Washer	4	
	12	M6F575 Socket Bolt	4	
	13	ES5510 Switch Box Assembly	1	
	14	ES513 Switch Box Packing	1	
	15	ES512 Switch Box Lid	1	
	16	E6F151 Machine Screw with Spring Washer	10	

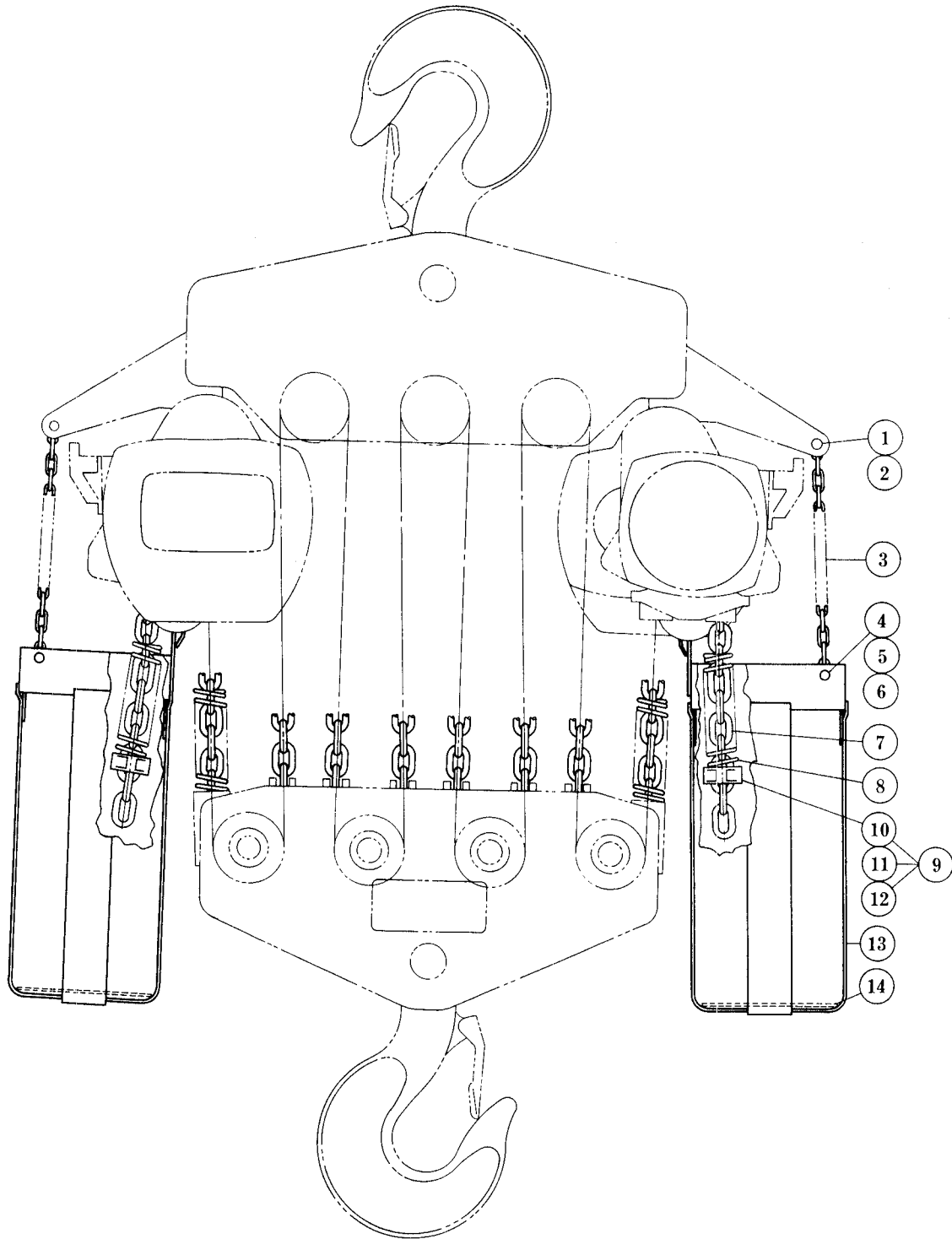
F CHAIN CONTAINER PARTS



10t



15t



20t



KITO CORP

3-37-4, Yoyogi, Shibuya-ku,
Tokyo 151, Japan

Tel. : 03-5371-7341

Fax. : 03-5371-7349

Tlx. : 222-2942 KITO J