



CSA

**MR SERIES
MOTORIZED TROLLEY
MODEL MR 1**

**PARTS
LIST**

125kg through 5t capacity

IMPORTANT

When ordering replacement parts, please specify the following points.

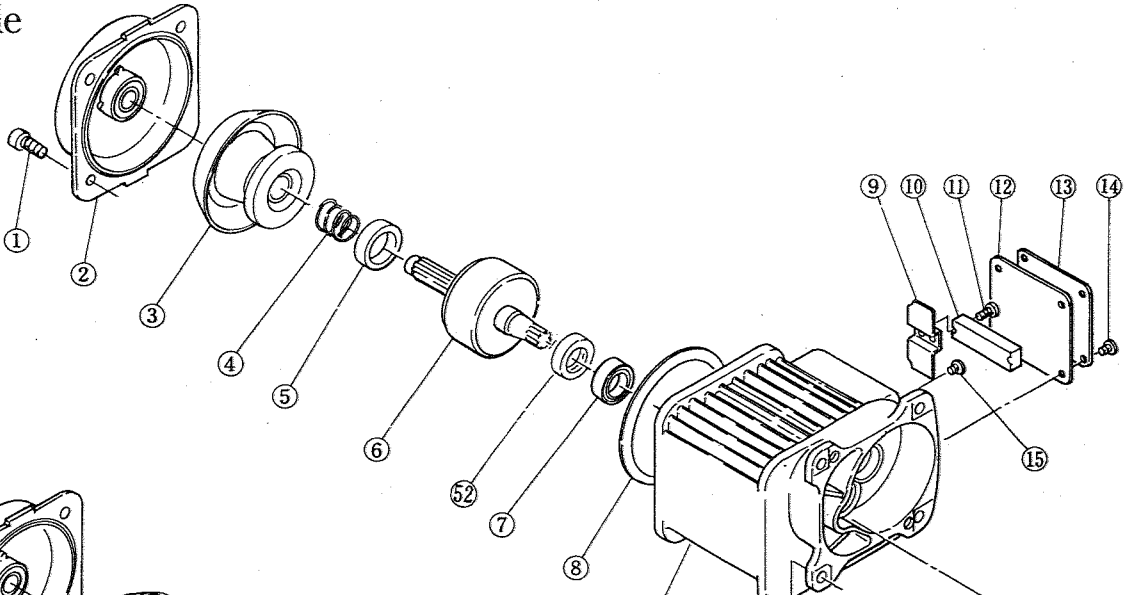
1. Voltage
2. Capacity, single or dual speed model and travelling speed (S or L)
3. Model number in name plate
4. Correct part names and numbers
5. Lineal length of push button cord or power supply cable

CONTENTS

A. HOUSING AND MOTOR PARTS	1
B. WHEEL AND SUSPENSION PARTS	4
C. ELECTRIC PARTS	10
D. CONTROL STATION PARTS	13
E. POWER SUPPLY PARTS	15

A HOUSING AND MOTOR PARTS

Single



Dual

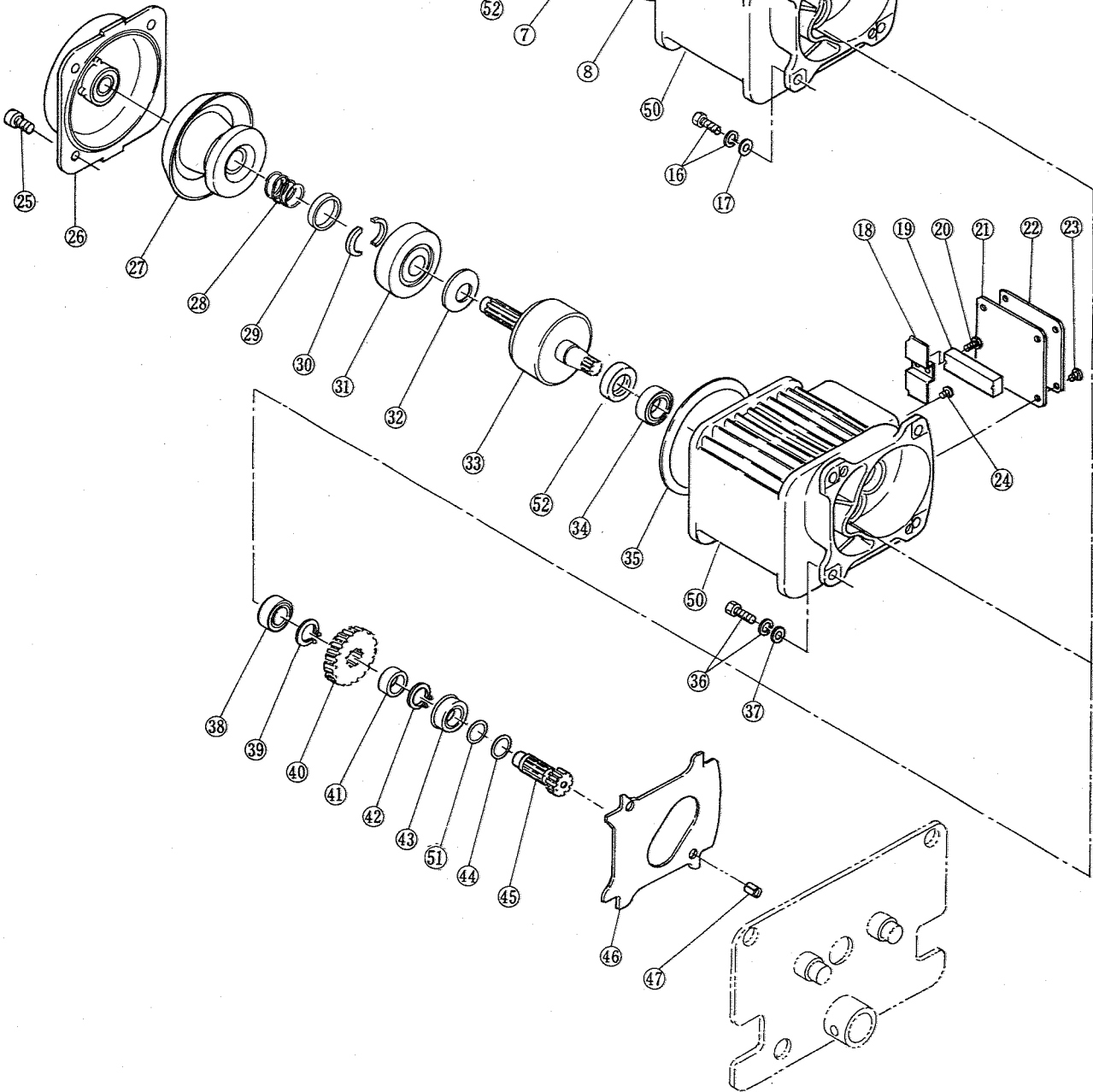


Fig No.	Part No.	Part name	No. per Trolley	Single speed			
				WLL(t)			
				1	2	3	5
1	304	Socket bolt	4				
2	1301	Motor cover assembly	1				
3	5261	Brake drum assembly	1				
4	264	Brake spring	1				
5	265	Bumper	1				
6	5291	Motor shaft with rotor	1				
7	253	Ball bearing	1				
8	281	Guard	1				
9	326	Coil cover	1				
10	851	Terminal plate 6P	1				
11	332	Machine screw with spring washer	2				
12	325	Terminal cover packing	1				
13	324	Terminal cover	1				
14	331	Machine screw with spring washer	4				
15	334	Machine screw with spring washer	1				
16	250	Bolt	4				
16	251	Spring washer	4				
17	252	Washer	4				
38	247	Ball bearing	1				
39	246	Snap ring	1				
40	241	Gear #2 (S)	1				
	241	Gear #2 (L)	1				
41	244	Spacer	1				
42	246	Snap ring	1				
43	245	Ball bearing	1				
44	243	O ring	1				
45	242	Gear #3	1				
46	248	Gear box packing	1				
47	249	Set pin	2				
50	5321	Motor frame with stator	1				
51	254	O ring	1				
52	293	Oil seal	1				

A: Housing and Motor Parts (Single speed)

Note: (S) for standard traversing speed and (L) for lower speed

Fig No.	Part No.	Part name	No. per Trolley	Dual speed			
				WLL(t)			
				1	2	3	5
18	326	Coil cover	1				
19	851	Terminal plate	1				
20	332	Machine screw with spring washer	2				
21	325	Terminal cover packing	1				
22	324	Terminal cover	1				
23	331	Machine screw with spring washer	4				
24	334	Machine screw with spring washer	1				
25	304	Socket bolt	4				
26	1301	Motor cover assembly	1				
27	5261	Brake drum assembly	1				
28	264	Brake spring	1				
29	274	Thrust collar	1				
30	273	Thrust disc	2				
31	271	Pull rotor	1				
32	272	Coned disc spring	1				
33	5291	Motor shaft with rotor	1				
34	253	Ball bearing	1				
35	281	Guard	1				
36	250	Bolt	4				
36	251	Spring washer	4				
37	252	Washer	4				
38	247	Ball bearing	1				
39	246	Snap ring	1				
40	241	Gear #2	1				
41	244	Spacer	1				
42	246	Snap ring	1				
43	245	Ball bearing	1				
44	243	O ring	1				
45	242	Gear #3	1				
46	248	Gear box packing	1				
47	249	Set pin	2				
50	5321	Motor frame with stator	1				
51	254	O ring	1				
52	293	Oil seal	1				

A: Housing and Motor Parts (Dual speed)

B WHEEL AND SUSPENSION PARTS

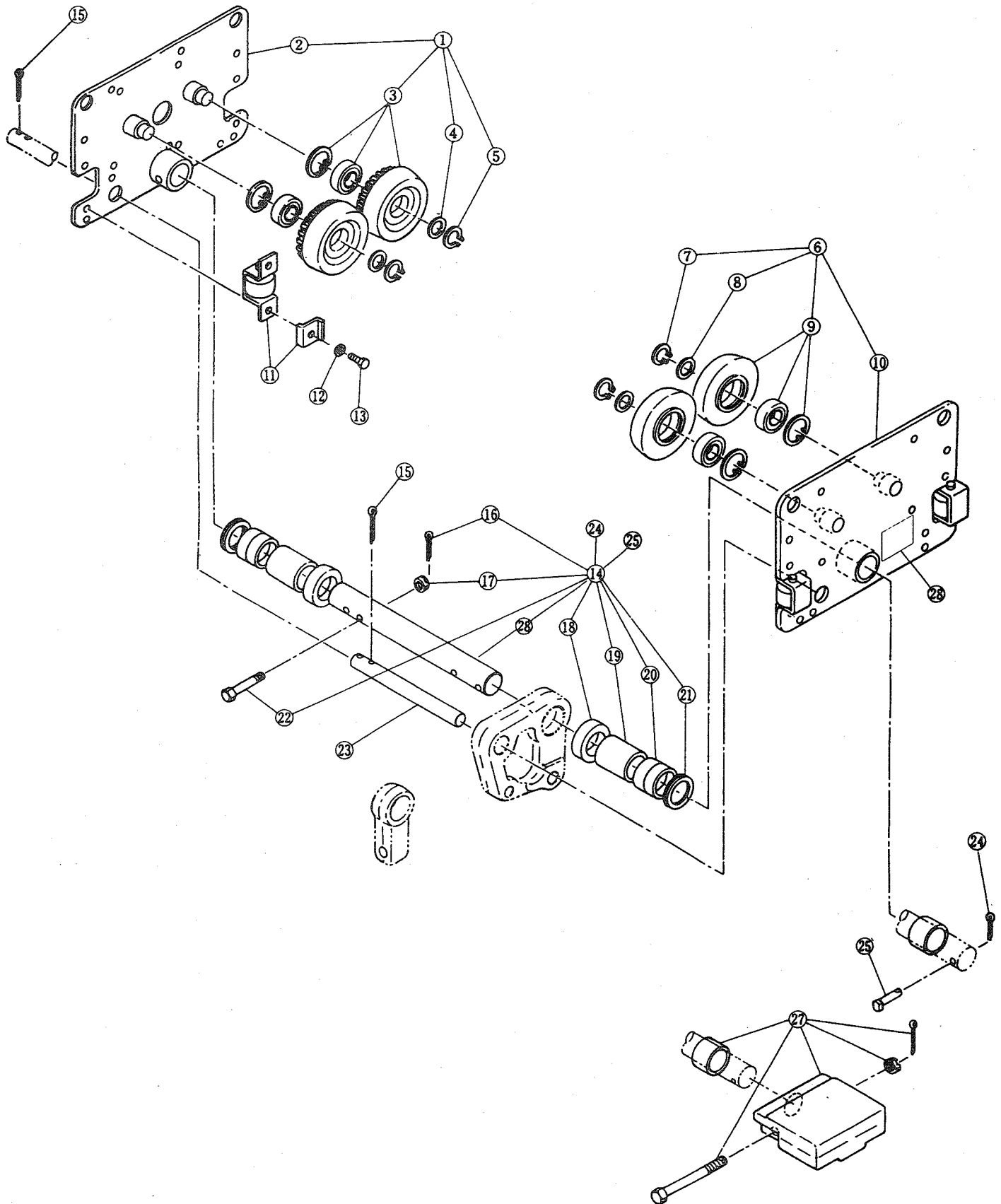


Fig No.	Part No.	Part name	No. per Trolley	Single and Dual Speed			
				WLL (t)			
				1	2	3	5

1	1201	Side plate G complete set	1				
2	5201	Side plate G assembly	1				
3	231	Track wheel G	2				
	233	Ball bearing	2				
	234	Snap ring	2				
4	235	Washer	2				
5	236	Snap ring	2				
6	1202	Side plate S complete set	1				
7	236	Snap ring	2				
8	235	Washer	2				
9	232	Track wheel S	2				
	233	Ball bearing	2				
	234	Snap ring	2				
10	5202	Side plate S assembly	1				
11	1211	Side roller complete set	4				
12	220	Spring lock washer	8				
13	219	Bolt	8				
15	132	Split pin	2				
23	131S1	Fixing shaft for beam width 58 to 153	1		————	————	————
	131S2	Fixing shaft for beam width 82 to 178	1	————		————	————
	131S3	Fixing shaft for beam width 82 to 178	1	————	————		————
	131S5	Fixing shaft for beam width 100 to 178	1	————	————	————	
	141W1	Fixing shaft for beam width 154 to 305	1		————	————	————
	141W2	Fixing shaft for beam width 179 to 305	1	————		————	————
	141W3	Fixing shaft for beam width 179 to 305	1	————	————		————
27	6121	Balance weight complete set	1			————	
28	711	Warning seal TM	1				

B: Wheels and Suspension Parts

Fig No.	Part No.	Part name	No. per Trolley	Single and Dual Speed			
				WLL (t)			
				1	2	3	5

Beam width for 58 to 127 mm

Fig No.	Part No.	Part name	No. per Trolley	1	2	3	5
14	1101	Suspension shaft complete set (125)	1				
16	105	Split pin	1				
17	104	Slotted nut	1				
18	110	Thick spacer L	2				
20	102	Thick spacer	3				
21	109	Thin spacer	8				
22	103	Bolt	1				
24	107	Split pin	1				
25	106	Shaft stopper	1				
28	101	Suspension shaft	1				

Beam width for 128 to 153 mm

Fig No.	Part No.	Part name	No. per Trolley	1	2	3	5
14	2101	Suspension shaft complete set (150)	1				
16	105	Split pin	1				
17	104	Slotted nut	1				
18	110	Thick spacer L	2				
20	102	Thick spacer	5				
21	109	Thin spacer	8				
22	103	Bolt	1				
24	107	Split pin	1				
25	106	Shaft stopper	1				
28	101	Suspension shaft	1				

Fig No.	Part No.	Part name	No. per Trolley	Single and Dual Speed			
				WLL (t)			
				1	2	3	5

Beam width for 82 to 153 mm

Fig No.	Part No.	Part name	No. per Trolley	1	2	3	5
14	1101	Suspension shaft complete set (150)	1				
16	105	Split pin	1				
17	104	Slotted nut	1				
18	110	Thick spacer L	2				
20	102	Thick spacer	3				
21	109	Thin spacer	8				
22	103	Bolt	1				
24	107	Split pin	1				
25	106	Shaft stopper	1				
28	101	Suspension shaft	1				

Beam width for 154 to 178 mm

Fig No.	Part No.	Part name	No. per Trolley	1	2	3	5
14	2101	Suspension shaft complete set (175)	1				
16	105	Split pin	1				
17	104	Slotted nut	1				
18	110	Thick spacer L	2				
20	102	Thick spacer	5				
21	109	Thin spacer	8				
22	103	Bolt	1				
24	107	Split pin	1				
25	106	Shaft stopper	1				
28	101	Suspension shaft	1				

Fig No.	Part No.	Part name	No. per Trolley	Single and Dual Speed			
				WLL (t)			
				1	2	3	5

Beam width for 100 to 178 mm

Fig No.	Part No.	Part name	No. per Trolley	1	2	3	5
14	2101	Suspension shaft complete set (175)	1				
16	105	Split pin	1				
17	104	Slotted nut	1				
18	110	Thick spacer L	2				
20	102	Thick spacer	3				
21	109	Thin spacer	8				
22	103	Bolt	1				
24	107	Split pin	1				
25	106	Shaft stopper	1				
28	101	Suspension shaft	1				

Beam width (mm)

Beam width (mm)				154 to 305	179 to 305	179 to 305	179 to 305
14	1121	Suspension shaft complete set (300)	1				
16	105	Split pin	1				
17	104	Slotted nut	1				
18	110	Thick spacer L	2				
19	108	Fixing spacer	2				_____
20	102	Thick spacer	9				_____
	102	Thick spacer	13				
21	109	Thin spacer	8				
22	103	Bolt	1				
24	107	Split pin	1				
25	106	Shaft stopper	1				
28	121	Suspension shaft	1				

Fig No.	Part No.	Part name	No. per Trolley	Single and Dual Speed			
				WLL (t)			
				1	2	3	5

5 tonne lug suspension

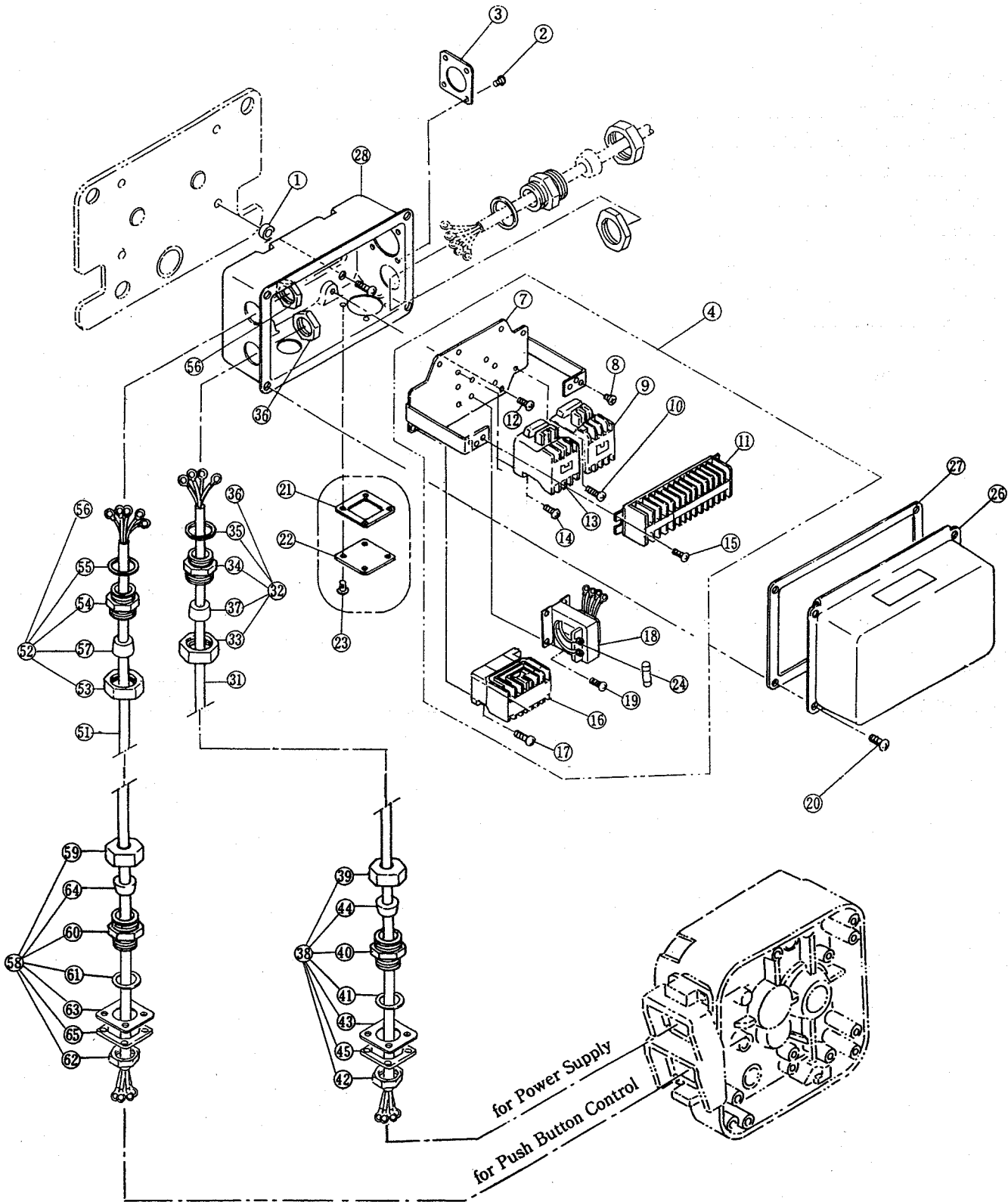
Beam width for 100 to 178 mm

Fig No.	Part No.	Part name	No. per Trolley	1	2	3	5
14	2101	Suspension shaft complete set(175)	1				
16	105	Split pin	1				
17	104	Slotted nut	1				
20	102	Thick spacer	5				
21	109	Thin spacer	8				
22	103	Bolt	1				
24	107	Split pin	1				
25	106	Shaft stopper	1				
28	101	Suspension shaft	1				

Beam width for 179 to 305 mm

Fig No.	Part No.	Part name	No. per Trolley	1	2	3	5
14	1121	Suspension shaft complete set(300)	1				
16	105	Split pin	1				
17	104	Slotted nut	1				
20	102	Thick spacer	15				
21	109	Thin spacer	8				
22	103	Bolt	1				
24	107	Split pin	1				
25	106	Shaft stopper	1				
28	121	Suspension shaft	1				

C ELECTRIC PARTS



Push Button Control Junction Cable

Power Supply Junction Cable

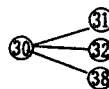
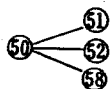


Fig No.	Part No.	Part Name	No. per Trolley	Single Traversing Speed			
				1t	2t	3t	5t

Direct wiring with Emergency stop device

1	423	Spacer	4				
2	820	Machine screw with spring washer	4				
3	349	Plate D	1				
4	1445V	Plate assembly (220/440V)	1				
	1445K	Plate assembly (575V)	1				
7	446	Plate	1				
8	451	Machine screw with spring washer	4				
9	873	Electromagnetic contactor for emergency stop device	1				
10	457	Machine screw with spring washer	2				
11	853	Terminal plate 16P	1				
12	454	Machine screw with spring washer	4				
15	452	Machine screw with spring washer and plain washer	2				
16	871	Electromagnetic contactor for traversing	1				
17	453	Machine screw with spring washer	2				
18	881V	Transformer (220/440V)	1				
	881K	Transformer (575V)	1				
19	455	Machine screw with spring washer	4				
24	1891	Fuse holder assembly	1				
25	894	Machine screw with spring washer	2				
20	422	Machine screw with spring washer	4				
21	818	Cord cover packing	1				
22	347	Cord cover	1				
23	348	Machine screw with spring washer	4				
26	401	Controller box cover	1				
27	421	Controller box packing	1				
28	411	Controller box	1				

Power Supply Junction Cable

30	1751	Cable 4C assembly	1				
31	759	Cable 4C	1				
32	1341	Cable holder A assembly	1				
33	341	Holder A	1				
34	342	Holder B	1				
35	343	Packing	1				
36	344	Holder nut	1				
37	351	Cable packing	1				
38	1341	Cable holder A assembly	1				
39	341	Holder A	1				
40	342	Holder B	1				
41	343	Packing	1				
42	344	Holder nut	1				
43	350	Holder plate	1				
44	351	Cable packing	1				
45	352	Cord holder plate packing	1				

Push Button Control Junction Cable

50	1761S	Cable 4C assembly for ER single speed	1				
	1761D	Cable 5C assembly for ER dual speed	1				
51	768	Cable 4C for ER single speed	1				
	769	Cable 8C for ER dual speed	1				
52	1341	Cable holder A assembly	1				
53	341	Holder A	1				
54	342	Holder B	1				
55	343	Packing	1				
56	344	Holder nut	1				
57	351S	Cable packing for ER single speed	1				
	351D	Cable packing for ER dual speed	1				
58	1341	Cable holder A assembly	1				
59	341	Holder A	1				
60	342	Holder B	1				
61	343	Packing	1				
62	344	Holder nut	1				
63	350	Holder plate	1				
64	351S	Cable packing for ER single speed	1				
	351D	Cable packing for ER dual speed	1				
65	352	Cord holder plate packing	1				

Fig No.	Part No.	Part Name	No. per Trolley	Dual Traversing Speed			
				1t	2t	3t	5t

Direct wiring with Emergency stop device

1	423	Spacer	4				
2	820	Machine screw with spring washer	4				
3	349	Plate D	1				
4	1445V	Plate assembly (220/440V)	1				
	1445K	Plate assembly (575V)	1				
7	446	Plate	1				
8	451	Machine screw with spring washer	4				
9	873	Electromagnetic contactor for emergency stop device	1				
10	457	Machine screw with spring washer	2				
11	853	Terminal plate 16P	1				
12	454	Machine screw with spring washer	4				
13	872	Electromagnetic contactor for high/low speed	1				
14	456	Machine screw with spring washer and plain washer	2				
15	452	Machine screw with spring washer and plain washer	2				
16	871	Electromagnetic contactor for traversing	1				
17	453	Machine screw with spring washer	2				
18	881	Transformer (220/440V)	1				
	881	Transformer (575V)	1				
19	455	Machine screw with spring washer	4				
24	892	Fuse	1				
20	422	Machine screw with spring washer	4				
21	818	Cord cover packing	1				
22	347	Cord cover	1				
23	348	Machine screw with spring washer	4				
26	401	Controller box cover	1				
27	421	Controller box packing	1				
28	411	Controller box	1				

Power Supply Junction Cable

30	1751	Cable 4C assembly	1				
31	758	Cable 4C	1				
32	1341	Cable holder A assembly	1				
33	341	Holder A	1				
34	342	Holder B	1				
35	343	Packing	1				
36	344	Holder nut	1				
37	351	Cable packing	1				
38	1341	Cable holder A assembly	1				
39	341	Holder A	1				
40	342	Holder B	1				
41	343	Packing	1				
42	344	Holder nut	1				
43	350	Holder plate	1				
44	351	Cable packing	1				
45	352	Cord holder plate packing	1				

Push Button Control Junction Cable

50	1761	Cable 5C assembly	1				
51	769	Cable 8C	1				
52	1341	Cable holder A assembly	1				
53	341	Holder A	1				
54	342	Holder B	1				
55	343	Packing	1				
56	344	Holder nut	1				
57	351	Cable packing	1				
58	1341	Cable holder A assembly	1				
59	341	Holder A	1				
60	342	Holder B	1				
61	343	Packing	1				
62	344	Holder nut	1				
63	350	Holder plate	1				
64	351	Cable packing	1				
65	352	Cord holder plate packing	1				

D CONTROL STATION PARTS

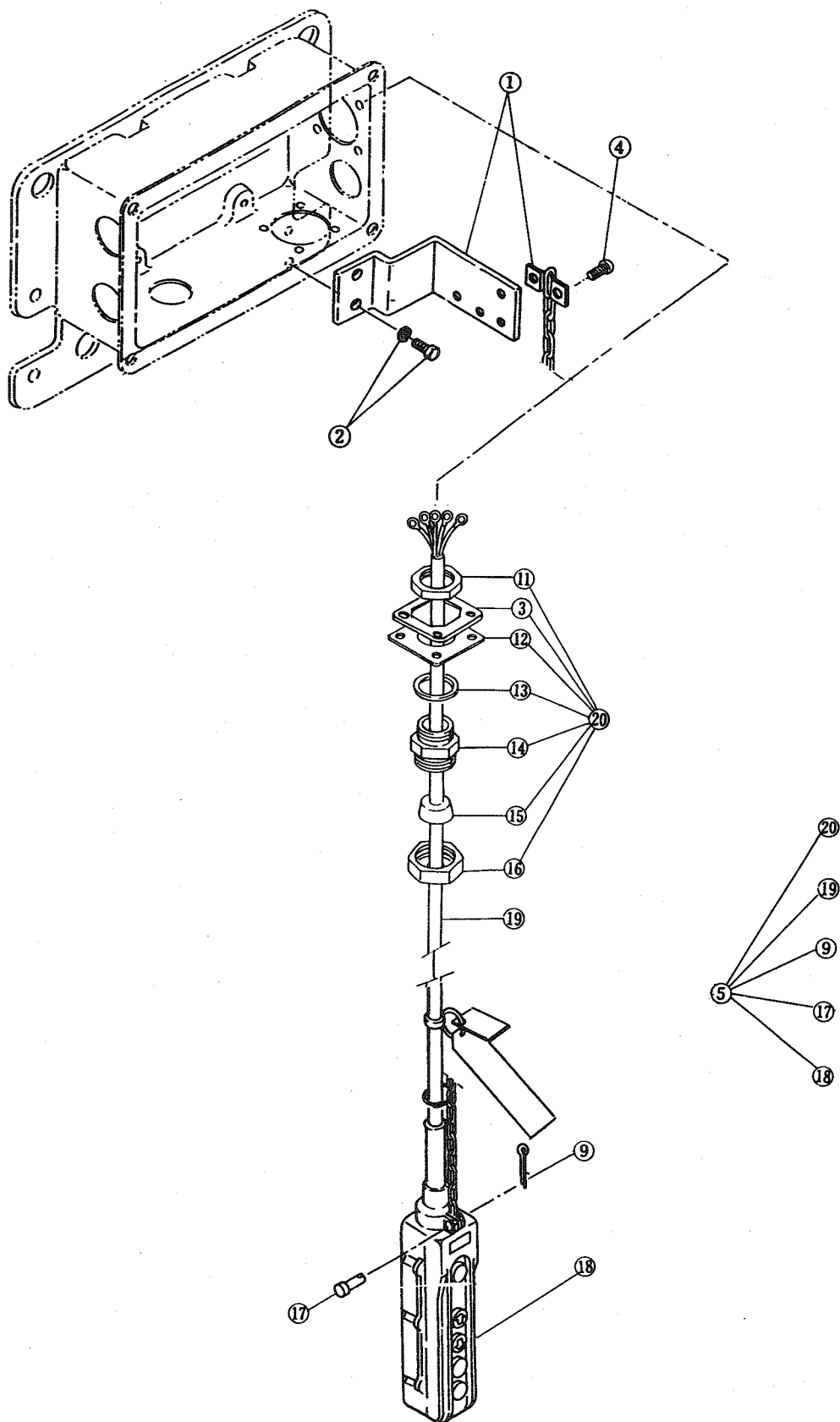


Fig No.	Part No.	Part Name	No. per Trolley	WLL(t)			
				1	2	3	5
1	481	Bar holder	1				
	816	Cord chain stopper	1				
2	482	Socket bolt	2				
4	817	Machine screw with spring washer	2				

Direct wiring with Emergency stop device

ER-Single/MR-Single

5	1781	Push button cord 7C assembly	1	
20	1341	Cable holder A assembly	1	
3	818	Cord holder plate packing	1	
11	344	Holder nut	1	
12	349	Plate D	1	
13	343	Packing	1	
14	342	Holder B	1	
15	351	Cable packing	1	
16	341	Holder A	1	
9	789	Split pin	1	
17	788	Cord support pin B	1	
19	781	Push button cord 8C	1	
18	1801MSS	5 switch push button MSS assembly	1	

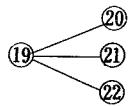
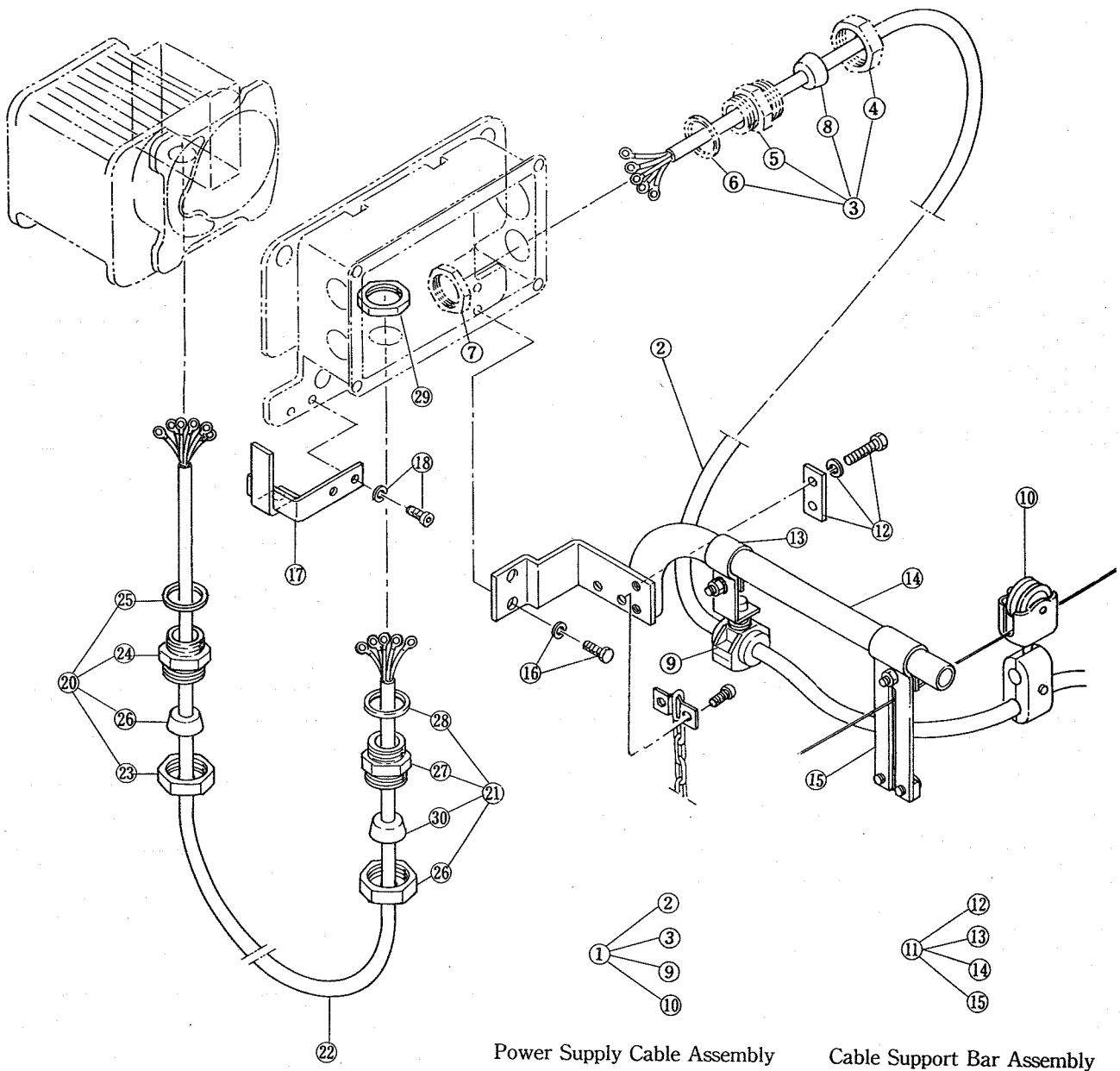
ER-Dual/MR-Single

5	1781	Push button cord 8C assembly	1	
20	1341	Cable holder A assembly	1	
19	781	Push button cord 8C	1	
9	789	Split pin	1	
17	788	Cord support pin B	1	
18	1801MDS	5 switch push button MDS assembly	1	

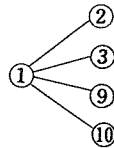
ER-Dual/MR-Dual

5	1781	Push button cord 9C assembly	1	
20	1341	Cable holder A assembly	1	
19	781	Push button cord 12C	1	
9	789	Split pin	1	
17	788	Cord support pin B	1	
18	1801MDD	5 switch push button MDD assembly	1	

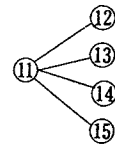
E POWER SUPPLY PARTS



Trolley Cable Assembly



Power Supply Cable Assembly



Cable Support Bar Assembly

Fig No.	Part No.	Part Name	No. per Trolley	WLL(t)			
				1	2	3	5

Power supply cable

1	1771V	Power supply cable 4C assembly (220/440V)	1				
	1771K	Power supply cable 4C assembly (575V)	1				
2	771V	Power supply cable 4C (220/440V)	1				
	771K	Power supply cable 4C (575V)	1				
3	1341V	Cable holder A assembly (220/440V)	1				
	1341K	Cable holder A assembly (575V)	1				
4	341	Holder A	1				
5	342	Holder B	1				
6	343	Packing	1				
7	344	Holder nut	1				
8	351V	Cable packing (220/440V)	1				
	351K	Cable packing (575V)	1				
9	1724V	Cable support 19 assembly (220/440V)	1				
	1724K	Cable support 16 assembly (575V)	1				
10	1641V	Cable hanger 17 assembly (220/440V)	1				
	1641K	Cable hanger 15 assembly (575V)	1				

Cable hanger

11	1491	Cable support bar assembly	1				
12	1501	Support bar holder assembly	1				
13	1492	Cable support arm assembly	1				
14	491	Cable support bar	1				
15	1493	Wire guide assembly	1				
16	482	Socket bolt	1				
17	511	Hanger pusher for beam width 75mm	1				
	511	Hanger pusher for beam width 125 to 175mm	1				
	512	Hanger pusher for beam width 100 to 150mm	1				
18	516	Socket bolt	1				

Fig No.	Part No.	Part Name	No. per Trolley	WLL (t)			
				1	2	3	5

Trolley cable

For single speed

19	1791	Trolley cable 4C assembly	1				
20	1341	Cable holder A assembly	1				
23	341	Holder A	1				
24	342	Holder B	1				
25	343	Packing	1				
26	351	Cable packing	1				
21	1341	Cable holder A assembly	1				
26	341	Holder A	1				
27	342	Holder B	1				
28	343	Packing	1				
29	344	Holder nut	1				
30	351	Cable packing	1				
22	791	Trolley cable 4C	1				

For dual speed

19	1791	Trolley cable 6C assembly	1				
20	1341	Cable holder A assembly	1				
23	341	Holder A	1				
24	342	Holder B	1				
25	343	Packing	1				
26	351	Cable packing	1				
21	1341	Cable holder A assembly	1				
26	341	Holder A	1				
27	342	Holder B	1				
28	343	Packing	1				
29	344	Holder nut	1				
30	351	Cable packing	1				
22	791	Trolley cable 6C	1				



KITO CORP.

3-37-4, Yoyogi, Shibuya-ku,
Tokyo 151-0053, Japan
Tel. : 03-5371-7341
Fax. : 03-5371-7349
Tlx. : 222-2942 KITO J
E-mail : overseas @ kito.co.jp
URL [http : //www.kito.co.jp](http://www.kito.co.jp)

KITO CANADA INC.
CHAIN HOISTS

309-3815 1ST AVENUE
BURNABY, BC V5C 3V6
Ph : (604) 291-9955
Fx : (604) 294-8855
E-mail : kitocan @ axionet.com