



**KITO**

# **MOTORIZED TROLLEY**

**Model MS3F : 1<sup>t</sup> to 5<sup>t</sup> Type**

**Model MS2F : 7.5<sup>t</sup> (Tapered flange wheel)**

**Model MS2Z : 7.5<sup>t</sup> (Flat flange wheel)**

# **PARTS LIST**

**Approved by CSA**

## **IMPORTANT**

When ordering replacement parts, please specify the following points :

1. Voltage
2. Capacity and travelling speed (S or L)
3. Model number in name plate.
4. Correct part names and numbers.
5. Lineal length of push button cord or power supply cable.

## **NOTE**

There are two kinds of track wheel for 7.5t trolley. standard wheel is to be used for tapered flange beam. If your beam is flat flange beam, inform before placing order.

# A HOUSING AND MOTOR PARTS

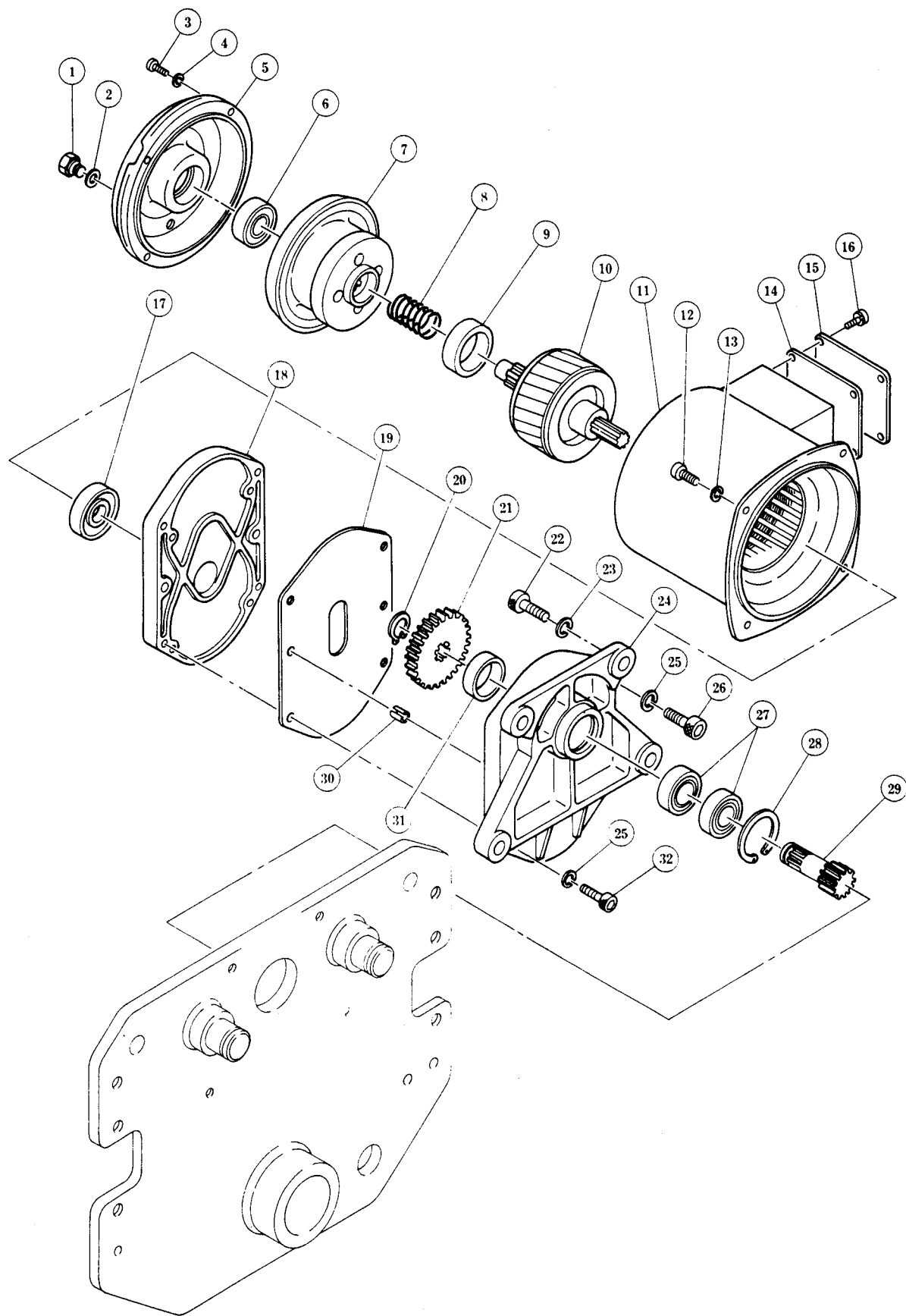


Fig No	Part No	Part Name	Nos per Trolley	Capacity				
				1t	2t	3t	5t	7.5t
1	M3S231	Inspection screw	1					
2	M3S232	Plug packing	1					
3	M3S258	Socket bolt	4					
4	M3S259	Spring washer	4					
5	M3S205	Motor cover	1					
6	M3S271	Ball bearing	1					
7	M3S5302	Brake drum assembly	1					
8	M3S304	Brake spring	1					
9	M3S305	Bumper	1					
10	M3S5502	Motor shaft with rotor	1					
11	★	Motor frame with stator	1					
12	M3S256	Socket bolt	4					
13	M3S257	Spring washer	4					
14	M3S207	Terminal cover packing	1					
15	M3S206	Terminal cover	1					
16	M3S230	Machine screw with spring washer	4					
17	M3S272	Ball bearing	1					
18	M3S202	Gear box B	1					
19	M3S203	Gear box packing	1					
20	M3S275	Snap ring	1					
21	M3S212S	Gear #2	S	1				
	M3S212L		L					
22	M3S251	Socket bolt	4					
23	M3S252	Spring washer	4					
24	M3S201	Gear box A	1					
25	M3S257	Spring washer	4					
26	M3S255	Socket bolt	2					
27	M3S273	Ball bearing	2					
28	M3S274	Snap ring	1					
29	M3S213	Gear #3	1					
30	M3S253	Set pin	2					
31	M3S214	Spacer	1					
32	M3S256	Socket bolt	2					

★M3S5501CV : 220/440V,60Hz  
M3S5501CK : 575V,60Hz

# B WHEELS AND SUSPENSION PARTS

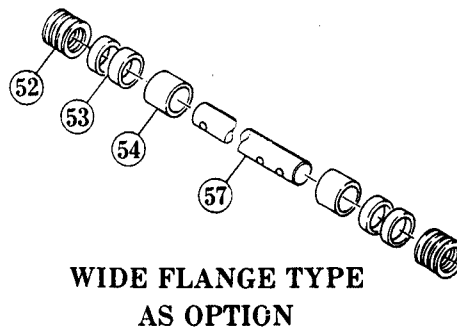
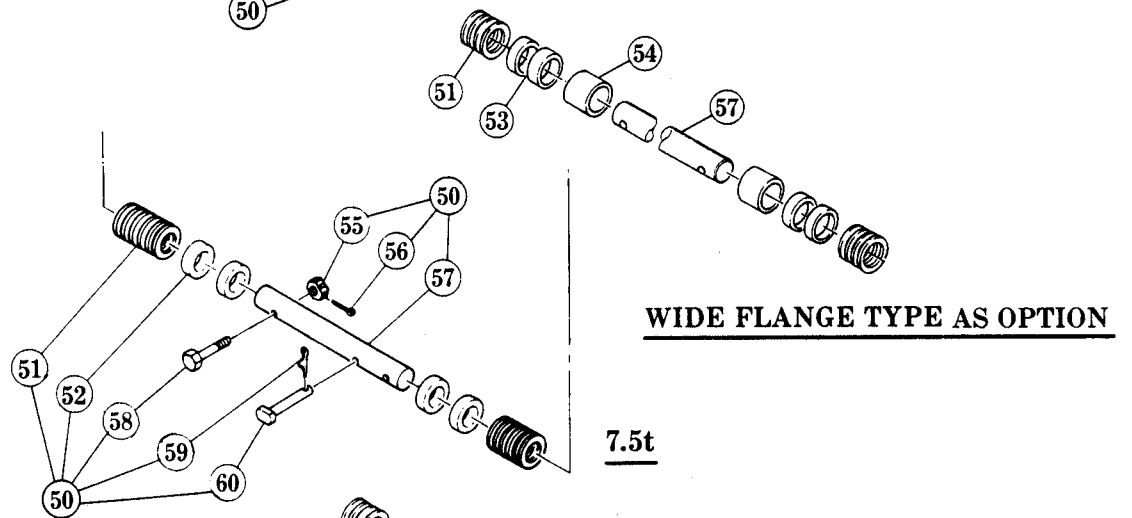
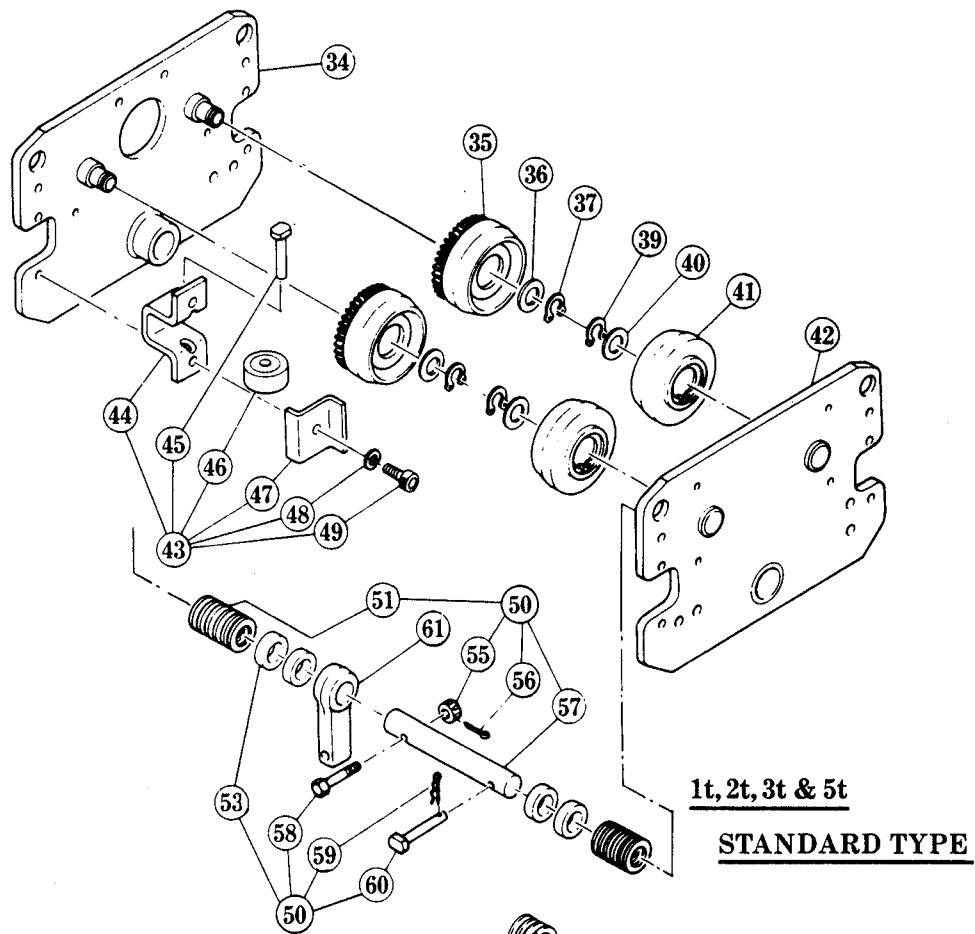
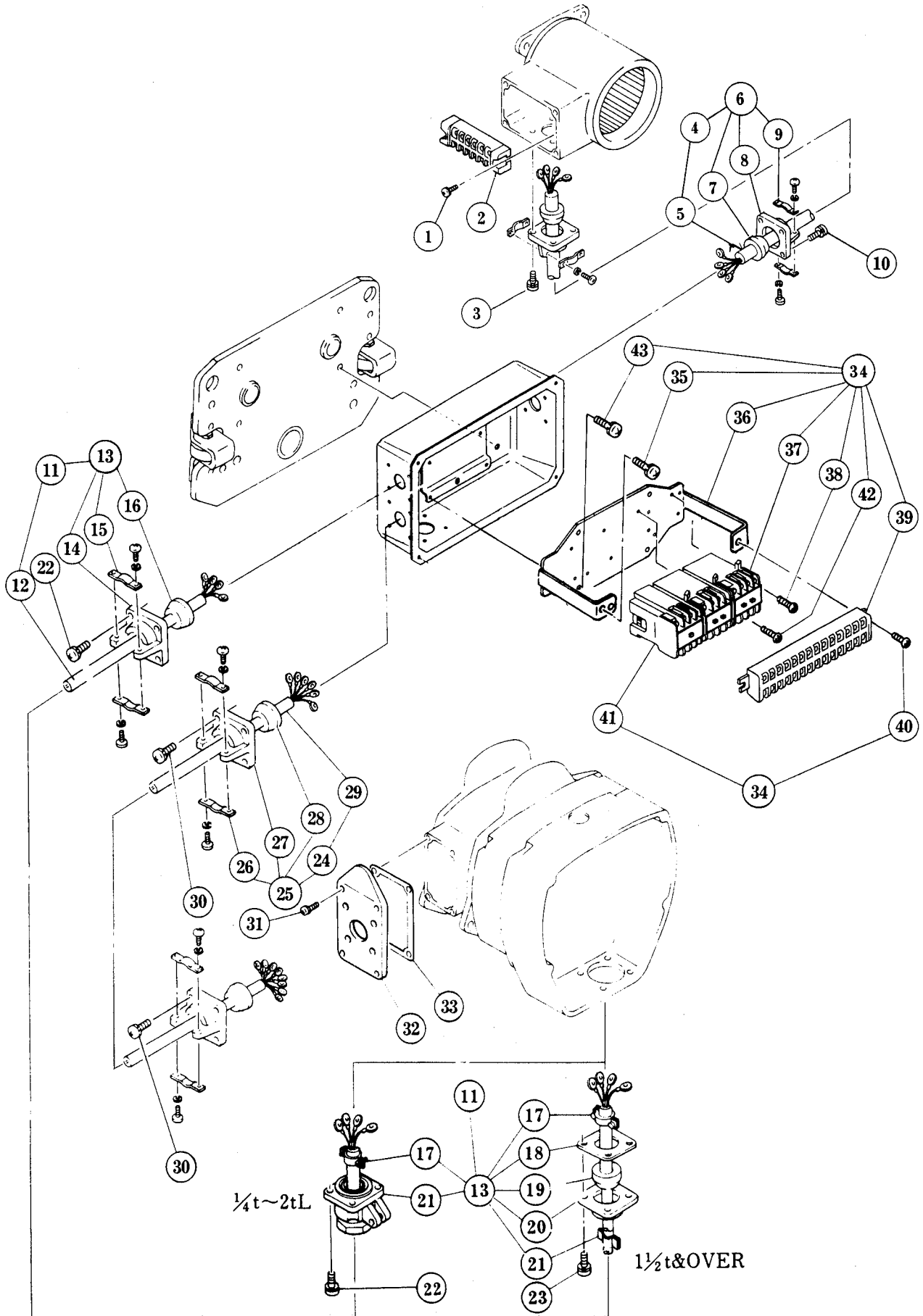


Fig No	Part No	Part Name	Nos per Trolley	Capacity				
				1t	2t	3t	5t	7.5t
34	M3S5111	Side plate G assembly	1					F
35	M3S1101	Track wheel G assembly	2					F
	M3S1105							Z
36	M3S104	Washer	2					
37	M3S153	Snap rig	2					
39	M3S153	Snap rig	2					
40	M3S104	Washer	2					
41	M3S1102	Track wheel S assembly	2					F
	M3S1106							Z
42	M3S5112	Side plate S assembly	1					
43	M3S1141	Side roller assembly	4					
44		Side roller holder	4					
45		Roller pin	4					
46		Roller assembly	4					
47	M3S144	Stopper plate	4					
48	M3S172	Spring washer	8 (6)*					
49	M3S171	Socket bolt with spring washer	8 (6)*					
		Bolt						
50	M3S1115	Suspension shaft assembly	1					
51	M3S118	Thin spacer	8					
52	M3S117	Thick spacer B	6					
			7					W
53	M3S116	Thick spacer	3					
			5					
			9		W			
			11	W				
			13				W	
54	M3S182		2	W	W	W		W
55	M3S162	Slotted nut	1					
56	M3S163	Split pin	1					
57	M3S115	Suspension shaft	1					
	M3S181			W	W	W	W	W
58	M3S161	Bolt	1					
59	M3S165	Split pin	1					
60	M3S164	Shaft stopper pin	1					
61	M3S004	Suspender	1					

(W) indicates wide flange type  
 F: Tapered flange wheel    Z: Flat flange wheel

\* Numbers in ( ) are for 7.5t trolley.

# C CONTROL STATION PARTS



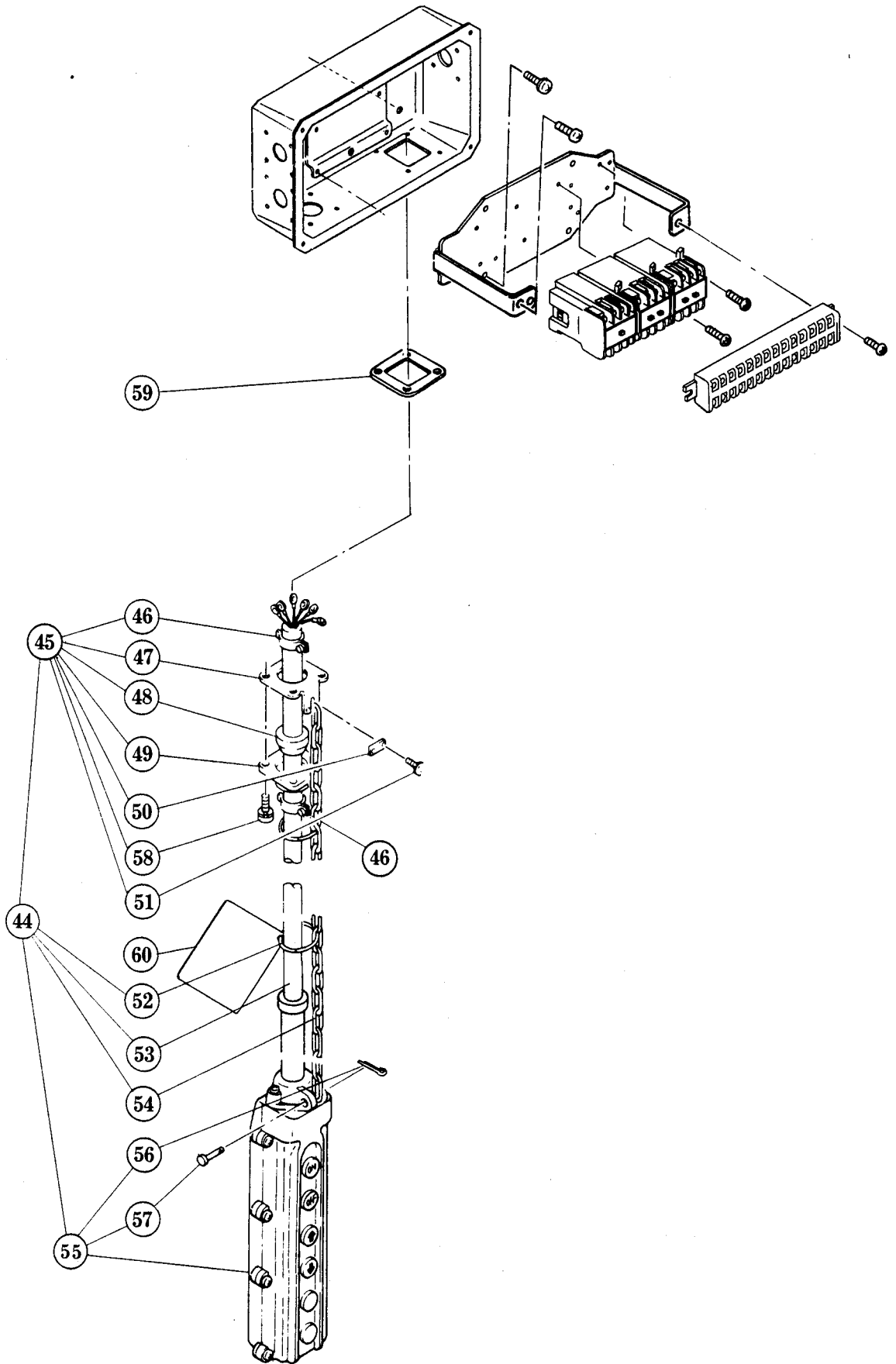


Fig No	Part No	Part Name	Nos per Trolley	Capacity				
				1t	2t	3t	5t	7.5t
1	M3S556	Maching screw with spring washer	2					
2	M3S518	Terminal plate 6P	1					
3	M3S561	Machine screw with spring washer	4					
4	M3S1521	Cable 4C complete set	1					
5	M3S521	Cable 4C	1					
6	M3S5522	Cable holder M/16 assembly						
7	M3S523	Cable packing 16	2					
8	M3S522	Cable holder M	2					
9	M3S1524	Cable clamp 16 assembly	2					
10	M3S560	Machine screw with spring washer	4					
11	M3S1610	Cable 4C complete set	1					
12	M3S610	Cable 4C	1					
13	M3S5611	Cable holder M/18 assembly	1					
14	M3S617	Cable holder M	1					
15	M3S1612	Cable clamp 18 assembly	1					
16	M3S611	Cable packing 18	1					
17	M3S1616	Cable clamp 19 assembly	1					
18	M3S615	Holder plate 42	1					
19	M3S614	Packing 18	1					
20	M3S613	Cord holder 42	1					
21	M3S1613	Cord holder A assembly	1					
22	M3S621	Machine screw with spring washer	8					
23	M3S622	Machine screw with spring washer	4					
24	M3S1601	Cable 6C complete set	1					
25	M3S5617	Cable holder M/19 assembly						
26	M3S1603	Cable clamp 18 assembly	2					
27	M3S617	Cable holder M	2					
28	M3S602	Cable packing 19M	2					
29	M3S601	Cable 6C	1					
30	M3S621	Machine screw with spring washer	8					
31	M3S330	Machine screw with spring washer	4					
32	M3S320	Terminal cover	1					
33	M3S119	Socket holder packing A	1					
34	M3S1601	Control plate complete set	1					
35	M3S555	Machine screw with spring washer	4					
36	M3S5514	Plate assembly	1					
37	M3S520	Electromagnetic contactor	2					
38	M3S557	Machine screw with spring washer	4					
39	M3S519	Terminal plate 14P	1					
40	M3S556	Machine screw with spring washer	2					
41	M3S547	Electromagnetic contactor	1					
42	M3S595	Machine screw with spring washer	2					
43	M3S554	Machine screw with spring washer	4					
44	ESM1532S	6 Push button cord complete set	1					
45	M3S 5528	Cable holder 42/18 assembly	1					
46	M3S1539S	Cable clamp 19 assembly	2					
47	M3S529	Cord holder support 42	1					
48	M3S538	Packing 18	1					
49	M3S528	Cable holder 42	1					
50	M3S530	Cord chain stopper	1					
51	M3S571	Machine screw with spring washer	2					
52	M3S536	Cord ring	5					
53	M3S532	Push button cord 6C	1					
54	M3S534	Cord chain	1					
55	M3S1531S	6 Push button switch assembly	1					
56	M3S671	Split pin	1					
57	M3S638	Cord chain pin	1					
58	M3S591	Machine scrdw with spring washer	4					
59	M3S527	Cord holder support packing	1					
60	M3S815	Tag S	1					

Circled Fig. No. shows a part exclusive for MS3c model.



# D POWER SUPPLY PARTS

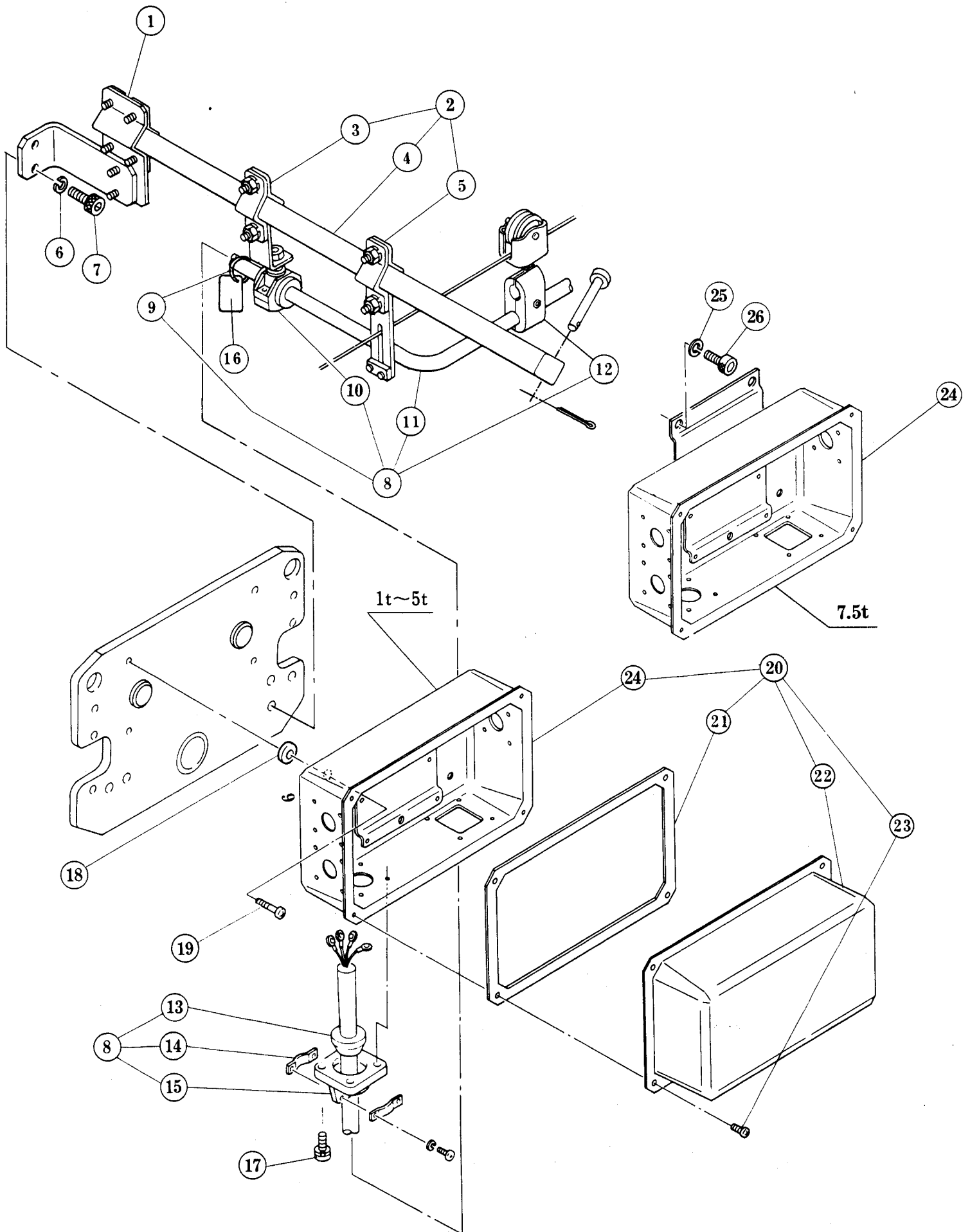


Fig No	Part No	Part Name	Nos per Trolley	Capacity				
				1t	2t	3t	5t	7.5t
1	M3S1542	Bar holder assembly	1					
2	M3S1721	Cable support bar assembly	1					
3	M3S1723	Cable support arm assembly	1					
4	M3S721	Cable support bar with stopper	1					
5	M3S1727	Wire guide assembly	1					
6	M3S576	Spring washer	2					
7	M3S575	Socket bolt	2					
8	M3S1731	Power supply cable 4C assembly	1					
9	M3S536	Cord ring	1					
10	M3S1724	Cable support assembly	1					
11	M3S731	Power supply cable 4C	1					
12	M3S1733	Cable hanger assembly	6					
13	M3S729	Cable packing 16	1					
14	M3S1735	Cable clamp 16 assembly	1					
15	M3S728	Cable holder M	1					
16	★	Tag F	1					
17	M3S779	Machine screw with spring washer	4					
18	M3S517	Spacer	4					
19	M3S551	Machine screw with spring washer	4					
⑳	M3S251	Switch box complete set	1					
㉑	M3S513	Switch box packing	1					
㉒	M3S512	Switch box lid	1					
23	M3S553	Machine screw with spring washer	4					
㉔	M3S5511	Switch box assembly	1					
25	M3S552	Spring washer	4					
26	M3S551	Socket bolt	4					

★M3S814CV : 220/440V, 60Hz

M3S814CK : 575V, 60Hz

Circled Fig. No. shows a part exclusive for MS3c model.

# E OPTIONAL PARTS FOR 7.5T

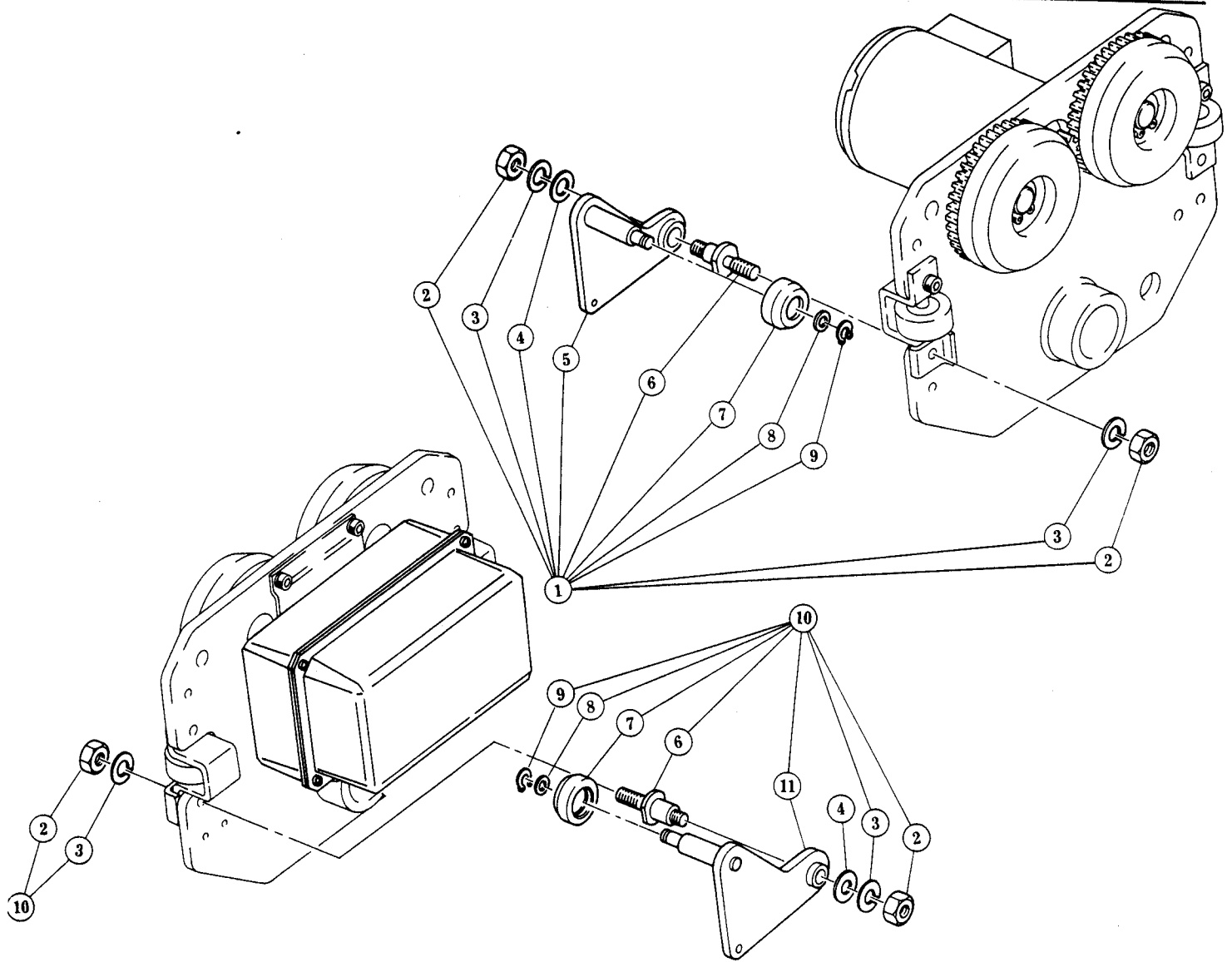


Fig No	Part No	Part Name	Nos per Trolley	Capacity
				7.5t
1	M3S1401	Hanger plate A complete set	1	
	2	M3S411	Nut	2
	3	M3S413	Spring washer	2
	4	M3S412	Washer	1
	5	M3S5401	Hanger plate A assembly	1
	6	M3S408	Bolt	1
	7	M3S1405	Hanger wheel assembly	1
	8	M3S407	Wheel washer	1
	9	M3S415	Snap ring	1
10	M3S1402	Hanger plate B complete set	1	
	2	M3S411	Nut	2
	3	M3S413	Spring washer	2
	4	M3S412	Washer	1
	11	M3S5402	Hanger plate B assembly	1
	6	M3S408	Bolt	1
	7	M3S1405	Hanger wheel assembly	1
	8	M3S407	Wheel washer	1
	9	M3S415	Snap ring	1



**KITO** CORP

3-37-4, Yoyogi, Shibuya-ku,  
Tokyo 151-0053, Japan  
TEL:03-5371-7341  
FAX:03-5371-7349  
TELEX:222-2942 KITO J  
CABLE:KITOKSK TOKYO  
URL <http://www.kito.co.jp>